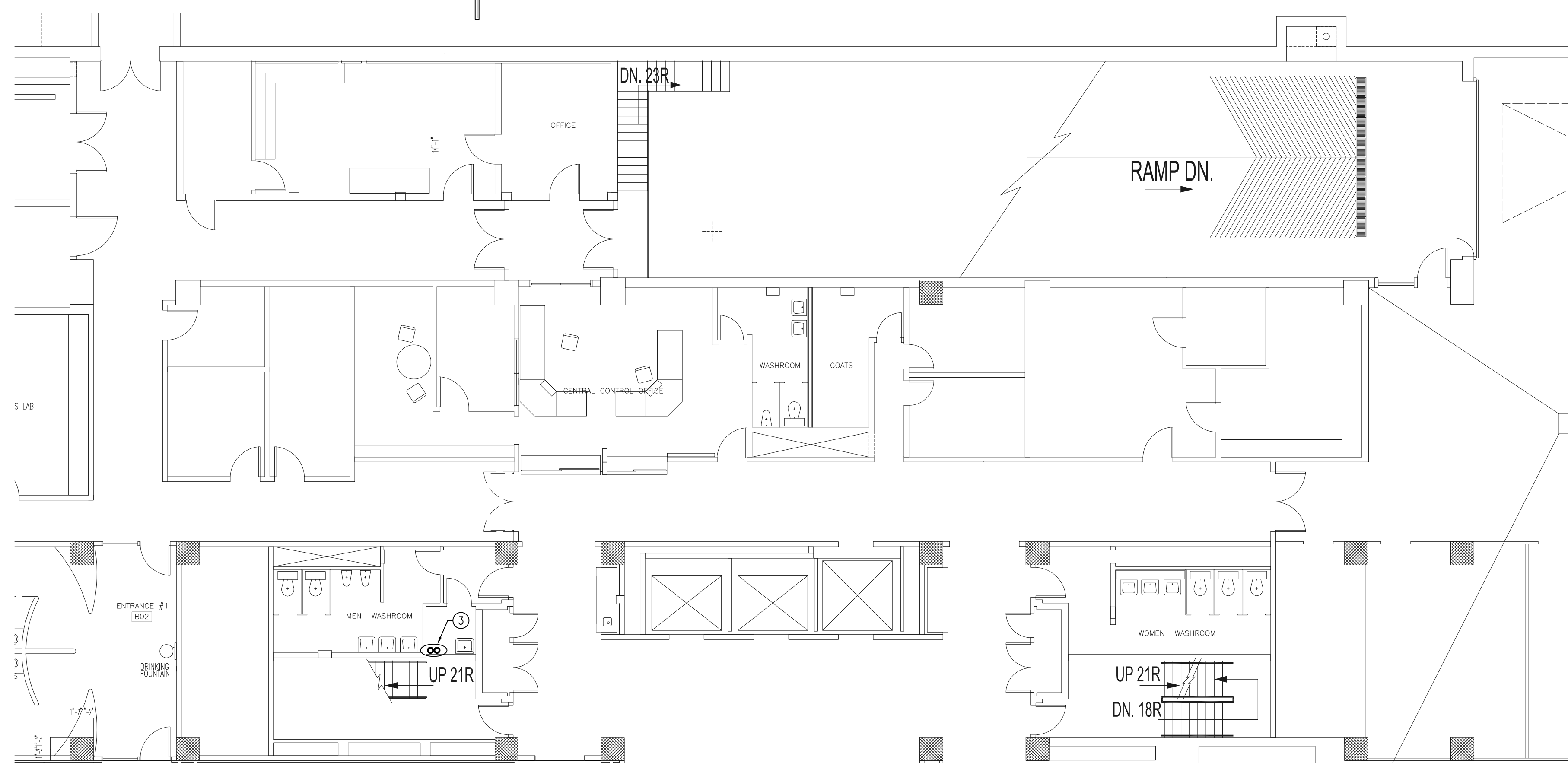


PART SUB-BASEMENT PLAN - FUEL OIL PIPE ROUTING

SCALE: 1:50

DRAWING NOTES #

1. NEW 380 FOS AND FOR PIPING IN 2-HOUR FIRE RATED INSULATION.
2. RISE UP TO BASEMENT AT THIS LOCATION.
3. RISE UP TO NEXT ADJACENT LEVEL ABOVE AT THIS LOCATION (TYPICAL) INTO PENTHOUSE. CARRY 2-HOUR FIRE RATING UP THE ENTIRE VERTICAL RUN.



PART BASEMENT PLAN - FUEL OIL PIPE ROUTING

SCALE: 1:50

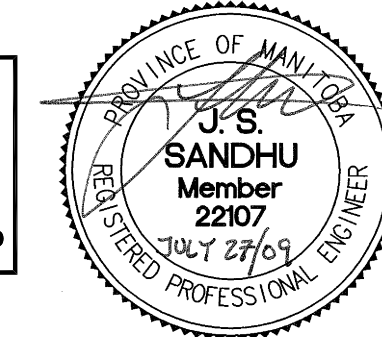
SMS ENGINEERING

SMS Engineering Ltd. Consulting Engineers
 770 Broadway Street Winnipeg MB Canada R3M 0K3
 Telephone 204.775.5201 Fax 204.772.2193
 07-232-01 sms@smseng.com

- | | | | |
|----|----------------------------|----|----------|
| 2. | ISSUED FOR ADDENDUM NO. 2 | JS | 09.07.27 |
| 1. | ISSUED FOR BID OPPORTUNITY | RL | 09.06.19 |

NO.	REVISION/DESCRIPTION	BY	DATE

SEALS



DRAWN BY	RR/JC	CHECKED BY	RL	APPROVED BY	RL
DATE	2008.01.16	USER APPROVAL			

CITY OF WINNIPEG
 PLANNING, PROPERTY &
 DEVELOPMENT DEPARTMENT
 CIVIC ACCOMMODATIONS DIVISION
 300 - 65 GARRY ST. R3C 4K4

PROJECT
 CITY OF WINNIPEG 510 MAIN ST.
 EMERGENCY DISTRIBUTION UPGRADE
 PHASE 1

SHEET TITLE
 SUB-BASEMENT AND BASEMENT PLANS
 PROPOSED LOCATION FOR
 FUEL OIL PIPING RUN

SCALE	PROJECT NO.	SHEET NO.
AS SHOWN	07-232-01	M3.0