

FILE NAME: 0723201.dwg

DATE:

DESCRIPTION:

PROJECT No: 07-232-01

ADDRESS:

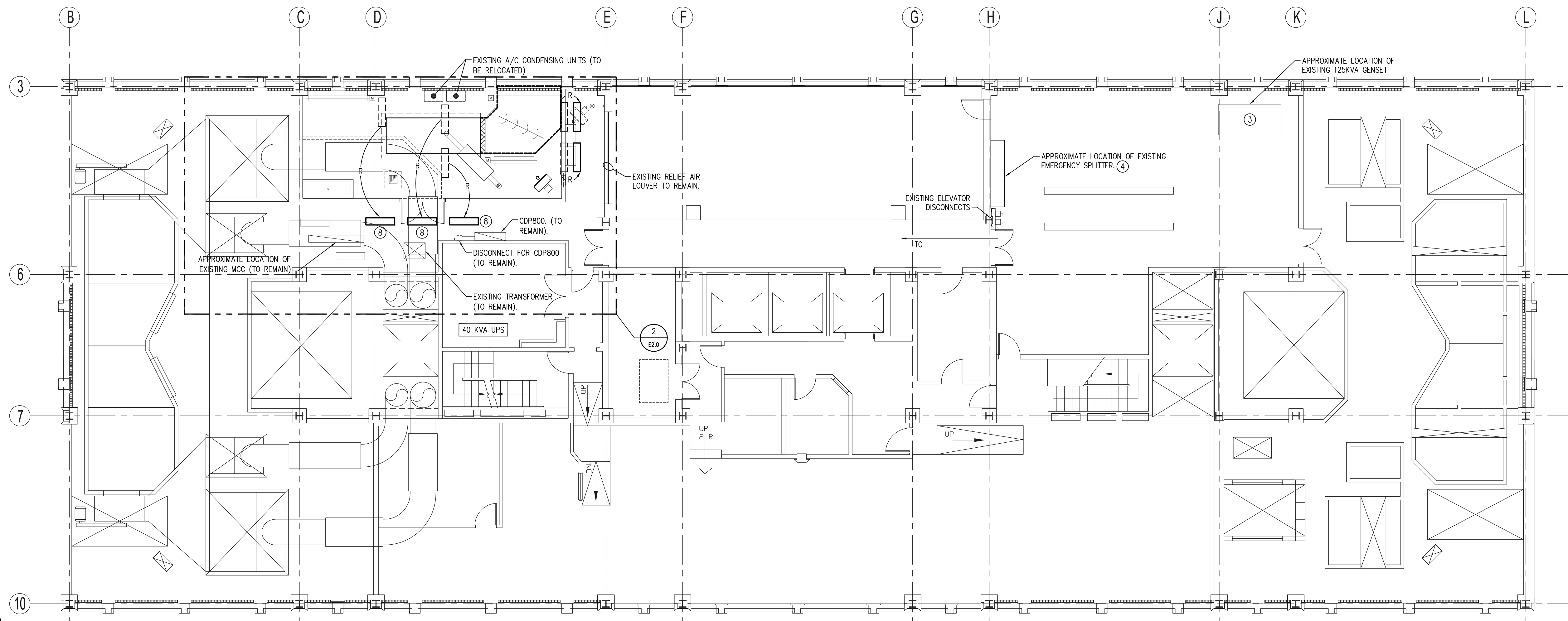
NOTES :

GENERAL NOTES

- 1. QUANTITY AND SIZE OF GENERATOR CONTROL/FUEL SYSTEM CONTROL WIRING IS TYPICAL AND SHALL BE COORDINATED BY CONTRACTORS. PROVIDE WIRE QUANTITY AND SIZE REQUIRED BY GENERATOR SUPPLIER.

DRAWING NOTES #

- 1. NEW POWER WIRING TO RE-FEED RELOCATED UNIT HEATER. CONTROLS BY MECHANICAL.
- 2. CONNECT FIRE ALARM ACTIVATION AND ANNUNCIATION DEVICES TO CLOSET ADDRESSABLE/ANNUNCIATION CIRCUITS.
- 3. DISCONNECT AND REMOVE EXISTING GENERATOR AND LEGALLY DISPOSE. WORK TO BE COMPLETED UNDER PHASE 2.
- 4. LOCATE SPLITTERS IN PHASE 2 TO SPICE EXISTING FEEDS TO EXISTING ESSENTIAL POWER LOADS FED FROM EMERGENCY SPLITTER. SEE DRAWING E3.0 FOR FURTHER DETAILS.
- 5. DC BATTERY PACK C/W 2 - 9W HEADS, 60 MINUTE CAPACITY. PROVIDE A DEDICATED EMERGENCY CIRCUIT 15A-1P FOR ROOM LIGHTS AND BATTERY PACK.
- 6. APPROXIMATE LOCATION OF EXISTING MI FEEDER TO BE CONNECTED TO NEW EMERGENCY CDP.
- 7. DC BATTERY PACK RATED FOR 2 HOURS. CONNECT TO EMERGENCY LIGHTING CIRCUIT FOR THIS AREA.
- 8. CONVERT RELOCATED LIGHTS TO CIRCUIT GEN-22.



1 7TH FLOOR ELECTRICAL  
SCALE: 1:100  
E2.0

| MOTOR SCHEDULE |                   |                                |      |      |       |                  |     |        |         |                  |             |                             |
|----------------|-------------------|--------------------------------|------|------|-------|------------------|-----|--------|---------|------------------|-------------|-----------------------------|
| MOTOR NO.      | DESCRIPTION       | LOCATION                       | KW   | H.P. | VOLTS | STARTER & ACCESS |     |        | CIRCUIT | STARTER LOCATION | FEEDER SIZE | REMARKS                     |
|                |                   |                                |      |      |       | MAN              | MAG | PL HOA |         |                  |             |                             |
| UH-1           | STEAM UNIT HEATER | NEW GENERATOR ROOM             | FRAC | 120V | X     | X                |     |        | GEN-24  | BELOW UNIT       | 2#12        | CONTROLS ARE BY MECHANICAL. |
| EF-1           | EXHAUST FAN       | NEW GENERATOR ROOM             | FRAC | 120V | X     | X                | X   |        | GEN-23  | BELOW UNIT       | 2#12        |                             |
| EF-2           | EXHAUST FAN       | SUB-BASEMENT FUEL STORAGE ROOM | FRAC | 120V | X     | X                |     |        |         | BELOW UNIT       | 2#12        |                             |
| FOP-1          | FUEL OIL PUMP     | SUB-BASEMENT FUEL STORAGE ROOM | 1/3  | 120V |       |                  |     |        | MCC-1   |                  | 2#12        | PACKAGED UNIT, DUAL FEED.   |
| FOP-2          | FUEL OIL PUMP     | SUB-BASEMENT FUEL STORAGE ROOM | 1/3  | 120V |       |                  |     |        | GEN-25  |                  | 2/C# 10 MI  |                             |

| FIXTURE SCHEDULE |             |         |   |       |  |
|------------------|-------------|---------|---|-------|--|
| FIXTURE TYPE     | LAMPS       | VOLTAGE | DESCRIPTION   | NOTES | APPROVED MANUFACTURERS   |
| HB               | 2-18<br>32W | 120V    | CHAIN SUSPENDED INDUSTRIAL C/W SLOTTED REFLECTOR AND WIRE GUARD |       | CM: ATIS-232<br>CF: TU248-SD<br>LITHONIA: IT232<br>METALUX: DDM-232<br>PEERLESS: ITS-4-232 |

| DESCRIPTION            | LAMP TYPE | LAMP VOLTS | LAMP AMP | LAMP WATT | CIRCUIT BREAKER |      | LAMP WATT | DESCRIPTION |                            |
|------------------------|-----------|------------|----------|-----------|-----------------|------|-----------|-------------|----------------------------|
|                        |           |            |          |           | AMP             | TRIP |           |             |                            |
| RECEPTACLE             | 1R        | 100        | 15A      | 1         | A               | 22   | 15A       | 560         | LIGHTING                   |
| RECEPTACLE             | 1R        | 100        | 15A      | 2         | B               | 23   | 15A       | 100         | EF-1                       |
| FUEL TANK CONTROLS     |           | 100        | 15A      | 3         | C               | 24   | 15A       | 100         | STEAM UH                   |
| BATTERY CHARGER        |           | 400        | 15A      | 4         | A               | 25   | 15A       | 250         | FUEL PUMP BASEMENT (FOP-1) |
| JACKET HEATER          |           | 4000       | 50A      | 5         | B               | 26   | 15A       |             | MECHANICAL DAMPERS         |
| JACKET HEATER          |           | 4000       | 50A      | 6         | C               | 27   | 15A       |             |                            |
| JACKET HEATER CONTROLS |           | 300        | 15A      | 7         | A               | 28   | 15A       |             |                            |
|                        |           |            |          | 8         | B               | 29   |           |             |                            |
|                        |           |            |          | 9         | C               | 30   |           |             |                            |
|                        |           |            |          | 10        | A               | 31   |           |             |                            |
|                        |           |            |          | 11        | B               | 32   |           |             |                            |
|                        |           |            |          | 12        | C               | 33   |           |             |                            |
|                        |           |            |          | 13        | A               | 34   |           |             |                            |
|                        |           |            |          | 14        | B               | 35   |           |             |                            |
|                        |           |            |          | 15        | C               | 36   |           |             |                            |
|                        |           |            |          | 16        | A               | 37   |           |             |                            |
|                        |           |            |          | 17        | B               | 38   |           |             |                            |
|                        |           |            |          | 18        | C               | 39   |           |             |                            |
|                        |           |            |          | 19        | A               | 40   |           |             |                            |
|                        |           |            |          | 20        | B               | 41   |           |             |                            |
|                        |           |            |          | 21        | C               | 42   |           |             |                            |

VOLTAGE: 120/208V, 3Ø, 4W  
CAPACITY: 225A  
MOUNTING: SURFACE  
REMARKS:

PH. A: 1610  
PH. B: 4200  
PH. C: 4200  
TOTAL: 10010

1. ISSUED FOR OWNER'S FINAL REVIEW CB 09.04.24

NO. REVISION/DESCRIPTION BY DATE

SEALS

**APEGM**  
Certificate of Authorization  
SMS Engineering Ltd.  
No. 166 Expiry: April 30, 2009

**PRELIMINARY**  
DATE PLOTTED  
March 31, 2009  
NOT FOR CONSTRUCTION

DRAWN BY: KM CHECKED BY: CR APPROVED CH: [Signature]  
DATE: 2008/04/17 USER APPROVAL

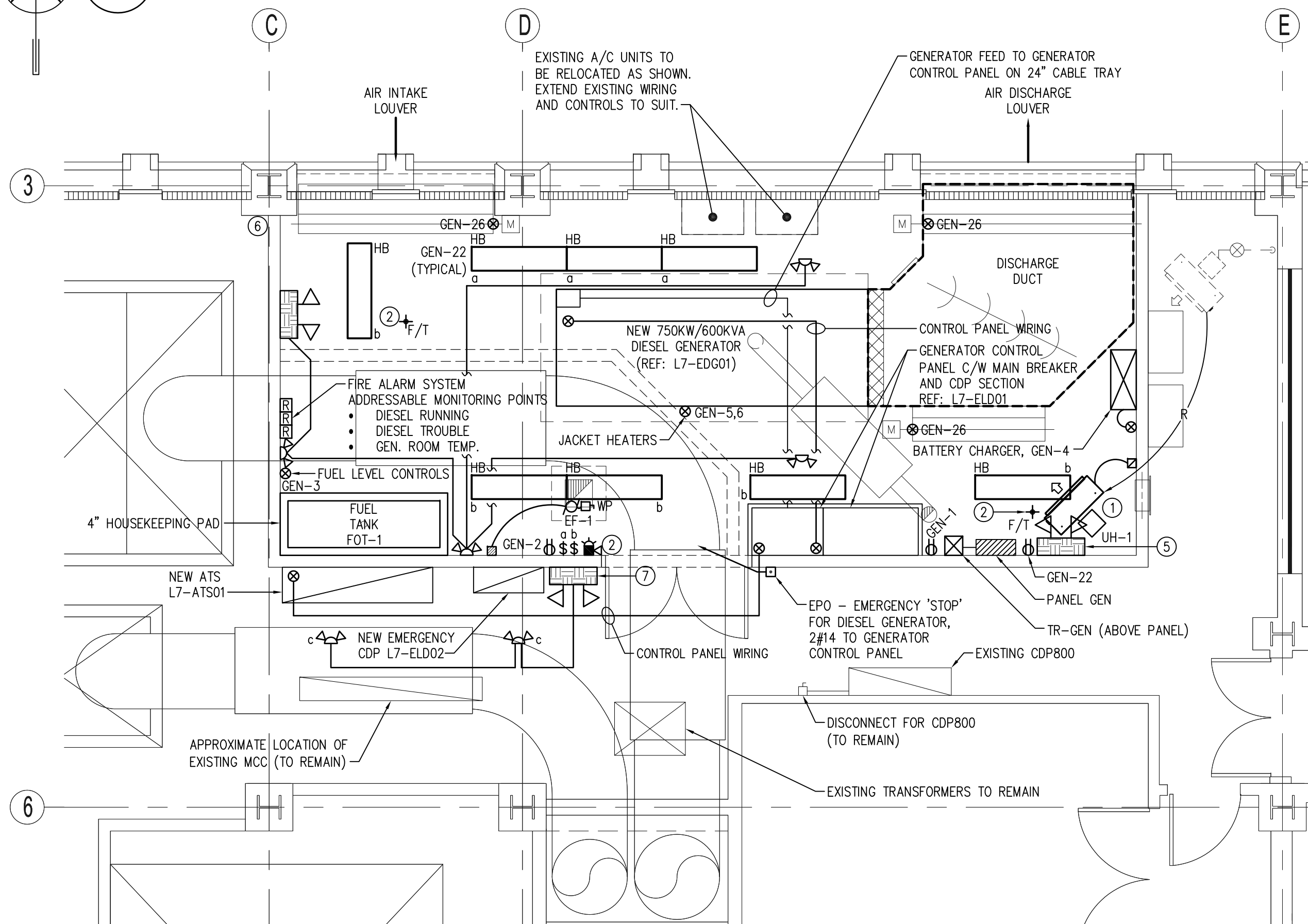
CITY OF WINNIPEG  
PLANNING, PROPERTY & DEVELOPMENT DEPARTMENT  
CIVIC ACCOMMODATIONS DIVISION  
300 - 65 GARRY ST. R3C 4K4

PROJECT  
CITY OF WINNIPEG 510 MAIN ST.  
EMERGENCY DISTRIBUTION UPGRADE  
PHASE 1

SHEET TITLE  
ELECTRICAL 7TH FLOOR  
LOCATION FOR  
NEW EQUIPMENT

SCALE PROJECT NO. SHEET NO.  
AS SHOWN 07-232-01 E2.0

DRAWING SHEET SIZE: A1 (841mm x 594mm) PLOT 1:1



2 PARTIAL 7TH FLOOR ELECTRICAL - NEW DIESEL GENERATOR ROOM - LIGHTING, POWER AND SYSTEMS  
SCALE: 1:50  
E2.0