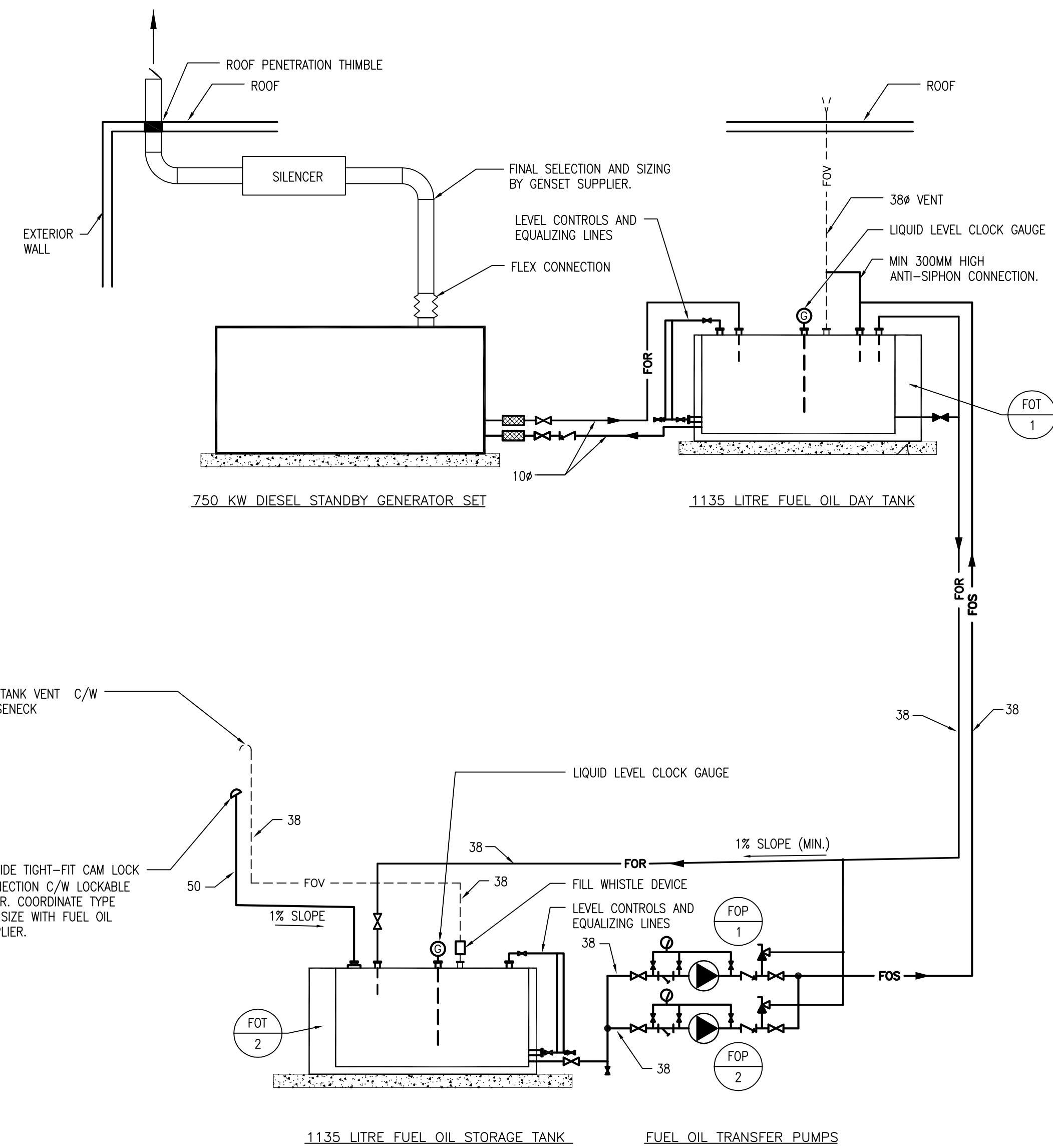


PART SUB-BASEMENT MECHANICAL ROOM PLAN - NEW FUEL PUMP AND TANK
SCALE: 1:50



FUEL OIL PIPING SCHEMATIC
SCALE: N.T.S.

DRAWING NOTES

1. NEW 1135 LITRE FUEL TANK ON 100mm HOUSEKEEPING PAD.
2. NEW FUEL OIL TRANSFER PUMP SKID C/W CONTROLS ON 400mm HOUSEKEEPING PAD. REFER TO SCHEMATIC FOR PIPING.
3. NEW 1-HOUR FIRE RATED ROOM BY ARCHITECTURAL C/W CONCRETE CURB AT BASE OF WALLS.
4. 75mm CONCRETE CONTAINMENT CURB AT DOOR.
5. EXHAUST FAN C/W BACKDRAFT DAMPER VENTED TO EXTERIOR.
6. NEW EXHAUST GRILLE. PRICE MODEL DE439 400X400. MATCH COLOUR TO BUILDING EXTERIOR.
7. FUEL FILL CONNECTION C/W LOCKABLE CAP.
8. FUEL VENT C/W GOOSENECK.
9. FUEL OIL TRANSFER PUMP CONTROLLER.
10. EXISTING FIRE PUMP ROOM.

NO.	REVISION/DESCRIPTION	BY	DATE

SEALS

APEGM
Certificate of Authorization
SMS Engineering Ltd.
No. 166 Expiry: April 30, 2010

PRELIMINARY
DATE PLOTTED
April 27, 2009
NOT FOR CONSTRUCTION

DRAWN BY	CHECKED BY	APPROVED BY
RR/IC	RL	RL
DATE	USER APPROVAL	
2009.01.16		

CITY OF WINNIPEG
PLANNING, PROPERTY &
DEVELOPMENT DEPARTMENT
CIVIC ACCOMMODATIONS DIVISION
300 - 65 GARRY ST. R3C 4K4

PROJECT
CITY OF WINNIPEG 510 MAIN ST.
EMERGENCY DISTRIBUTION UPGRADE
PHASE 1

SHEET TITLE
SUB-BASEMENT MECHANICAL ROOM
PROPOSED LOCATION FOR
NEW EQUIPMENT

SMS ENGINEERING

SMS Engineering Ltd. Consulting Engineers
770 Bradford Street Winnipeg MB Canada R3M 0G1
Telephone: 204.775.0291 Fax: 204.772.2153
www.smseng.com

SCALE	PROJECT NO.	SHEET NO.
AS SHOWN	07-232-01	M2.0