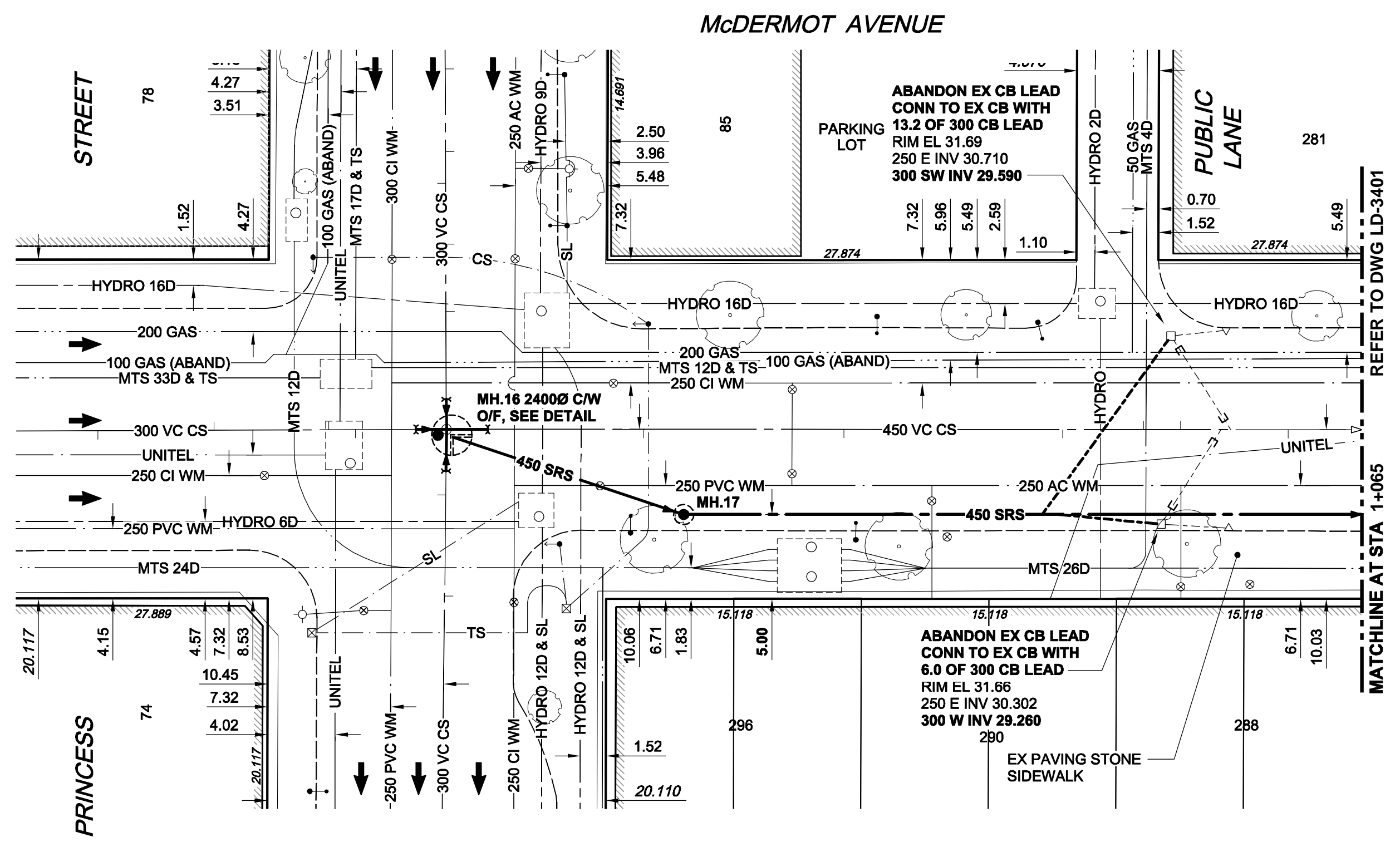
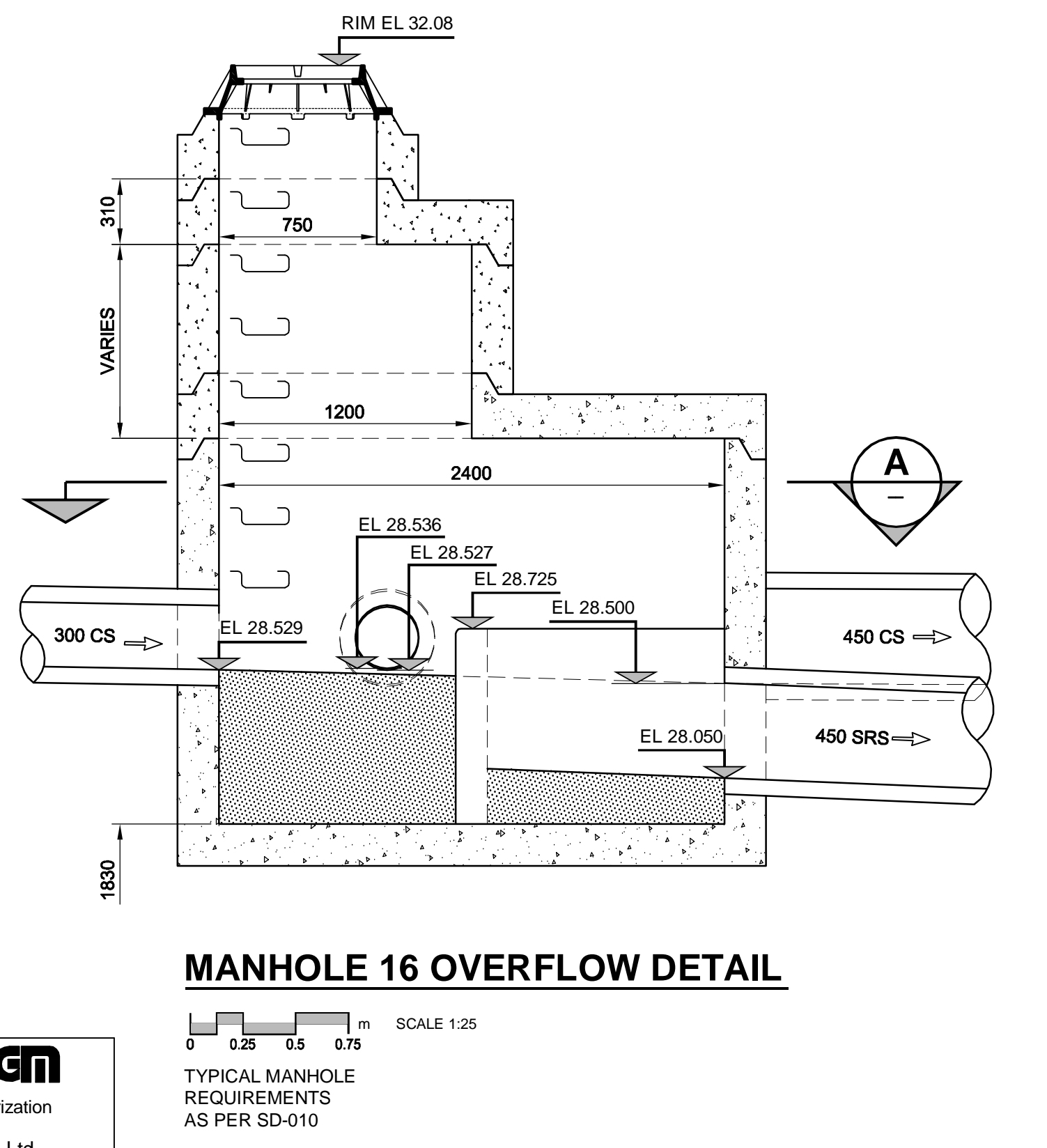
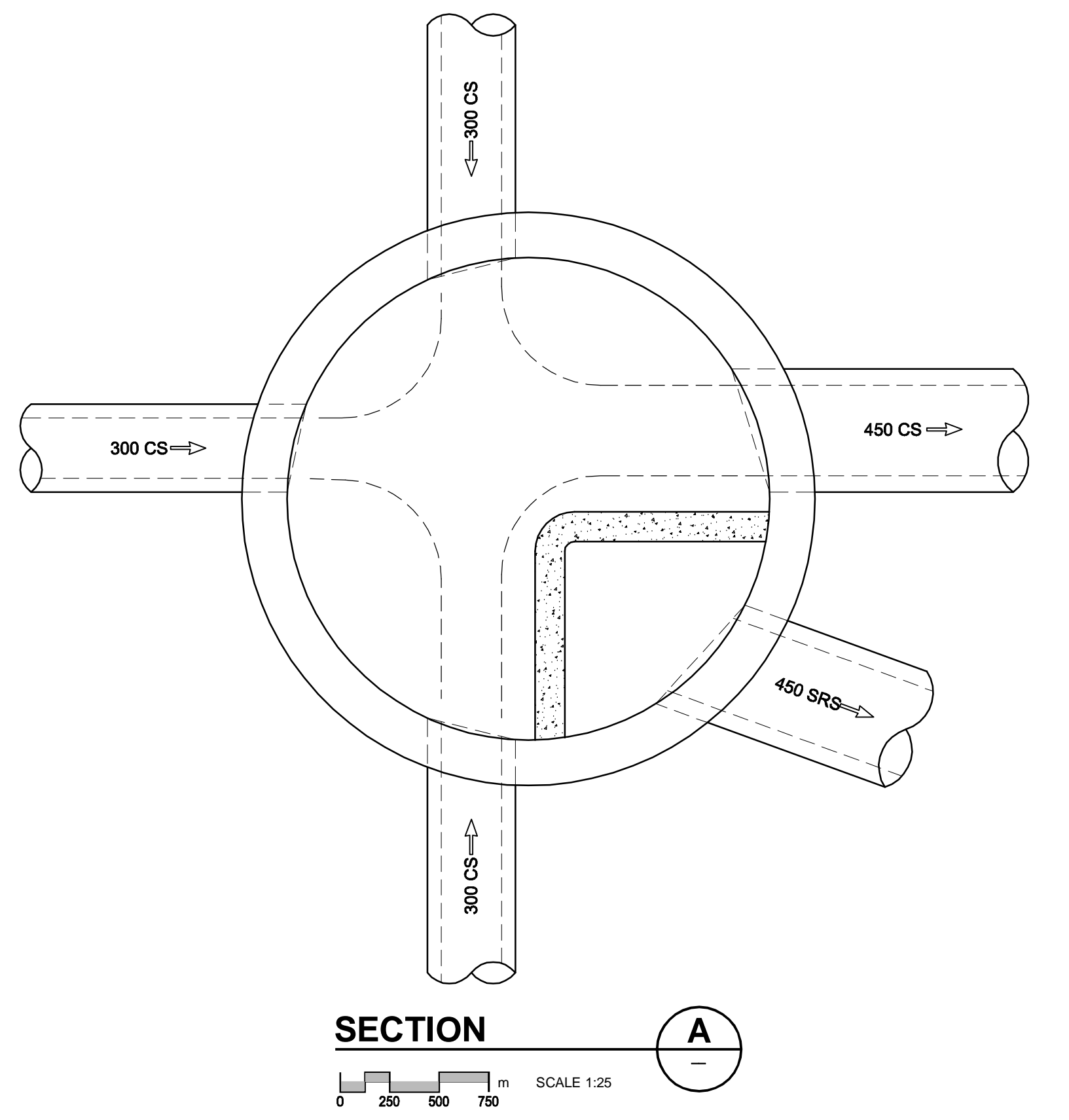


CHAINAGE ALONG S PL



- CONSTRUCTION NOTES:**
1. THE LOCATION OF ALL SERVICES IS TO BE CONFIRMED IN THE FIELD.
 2. INSTALL NEW SEWERS AND CATCHBASIN LEADS BY TRENCHLESS METHODS WHEREVER POSSIBLE.
 3. RENEW/REHABILITATE CATCHBASINS & RENEW CATCHBASIN LEADS WHERE NOTED.



150 mm WM	WATERMAIN	150 mm WM	CURB STOP	150 mm WM	WATERMAIN	150 mm WM	LOCATION APPROVED
HYDRANT	HYDRANT	REDUCER	150 mm WM	HYDRANT	HYDRANT	UNDERGROUND STRUCTURES	
VALVE	VALVE	COUPLING	300 mm LDS	LAND DRAINAGE SEWER	LAND DRAINAGE SEWER		
250 mm WWS	WASTE WATER SEWER	ANODE	250 mm WWS	WASTE WATER SEWER	WASTE WATER SEWER		
MANHOLE	MANHOLE	MTS	MANHOLE	PAVEMENT CROWN	PAVEMENT CROWN		
CATCH BASIN	CATCH BASIN	GAS	CATCH BASIN	N/W PROPERTY LINE	N/W PROPERTY LINE		
CURB INLET	CURB INLET	TESTHOLE	CURB INLET	S/E PROPERTY LINE	S/E PROPERTY LINE		
CULVERT	CULVERT	LAMP STANDARD	CULVERT	N/W GUTTER	N/W GUTTER		
PIPE ABANDONMENTS	PIPE ABANDONMENTS	TREE	PIPE ABANDONMENTS	S/E GUTTER	S/E GUTTER		
SURVEY BAR	SURVEY BAR		SURVEY BAR				
EXISTING	LEGEND - PLAN	NEW	EXISTING	LEGEND - PLAN	NEW	EXISTING	LEGEND - PROFILE

LOCATION APPROVED UNDERGROUND STRUCTURES

SUPR. U/G STRUCTURES DATE COMMITTEE

NOTE: LOCATION OF UNDERGROUND STRUCTURES AS SHOWN ARE BASED ON THE BEST INFORMATION AVAILABLE. BUT NO GUARANTEE IS GIVEN THAT ALL EXISTING UTILITIES ARE SHOWN OR THAT THE GIVEN LOCATIONS ARE EXACT. CONFIRMATION OF EXISTENCE AND EXACT LOCATION OF ALL SERVICES MUST BE OBTAINED FROM THE INDIVIDUAL UTILITIES BEFORE PROCEEDING WITH CONSTRUCTION.

0	ISSUED FOR CONSTRUCTION	03/10/09	KMB
NO.	REVISIONS	YYMMDD	BY

AECOM		DESIGNED BY GEB / DME		CHECKED BY FMI	
DRAWN BY KMB		APPROVED BY AN		HOR. SCALE 1:250	
DATE March 10, 2009		DATE March 10 / 09		VERT. SCALE 1:50	
		RELEASED FOR CONSTRUCTION		C. Boulet	

APECM
Certificate of Authorization
AECOM Canada Ltd.
No. 4671 Date: March 10, 2009

BID OPPORTUNITY NO. 12-2009

PROFESSIONAL'S SEAL
Revision 0
Issued for Construction
WAS SEALED BY
A. NAGY
AND DATED
March 10, 2009

THE CITY OF WINNIPEG
WATER AND WASTE DEPARTMENT

ALEXANDER/BANNATYNE
COMBINED SEWER RELIEF
CONTRACT 8
McDERMOT AVENUE
PRINCESS STREET
TO 15m W OF KING STREET

SHEET 6 OF 18
CITY DRAWING NUMBER
LD-3400
REV 0