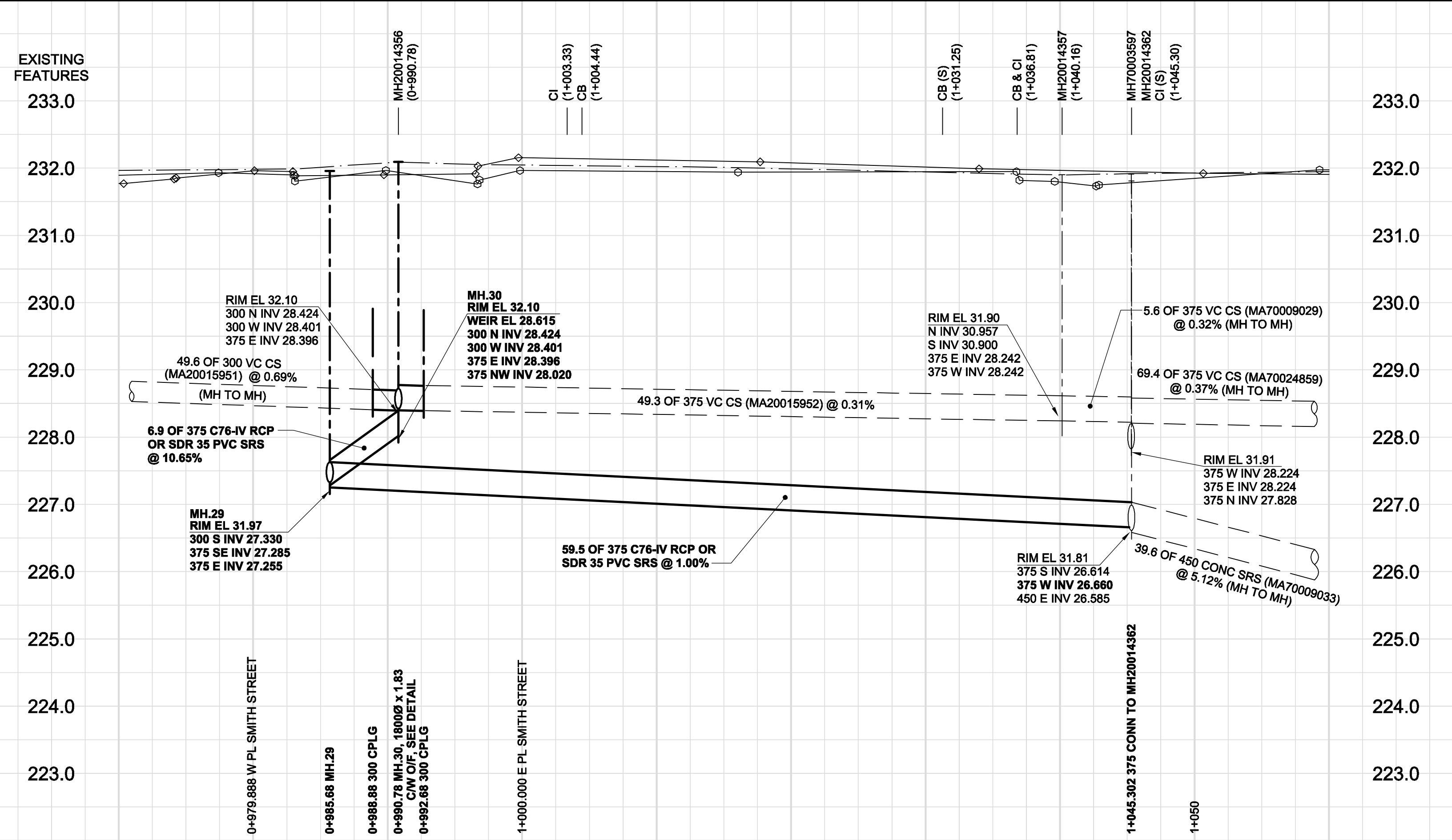


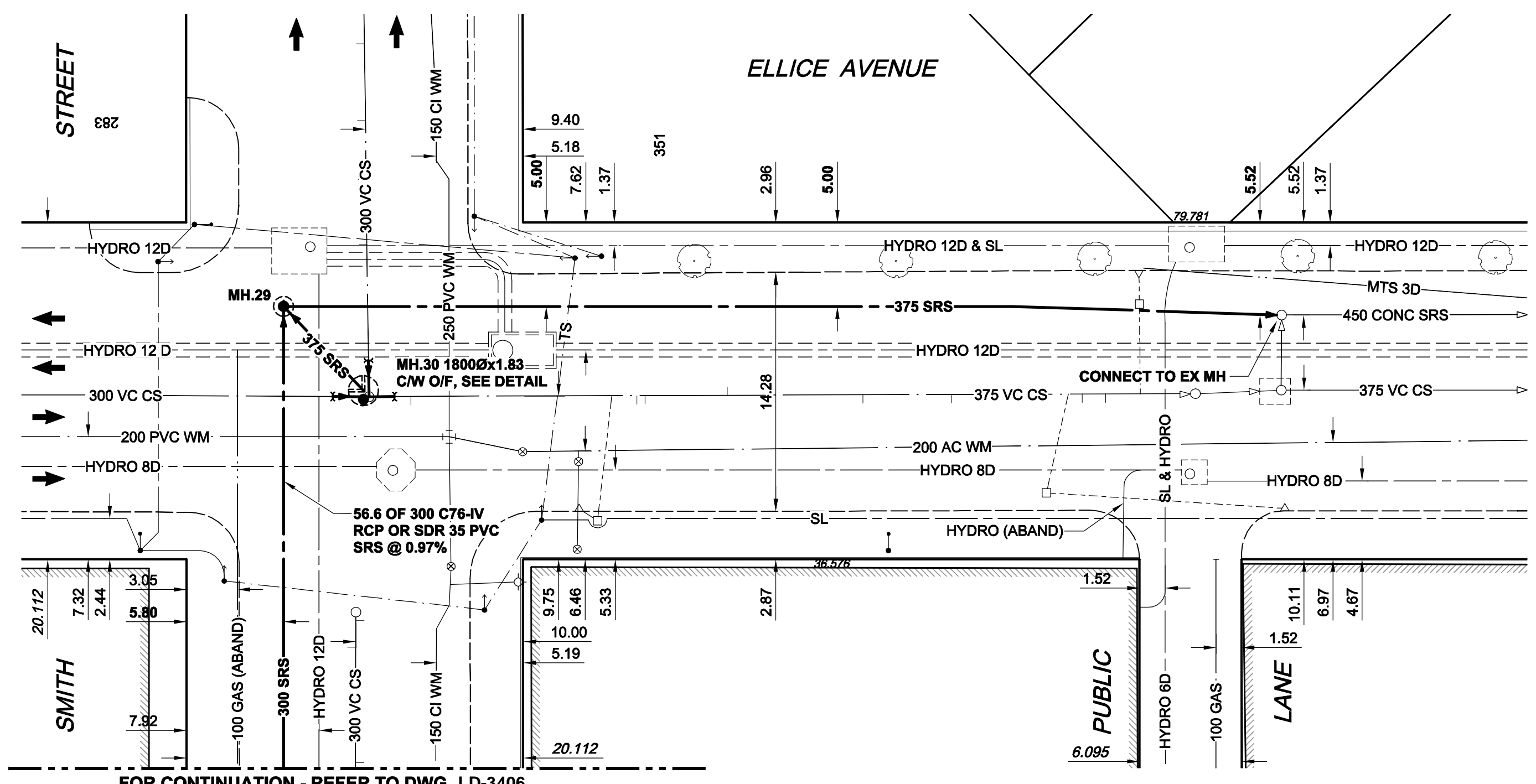
D SIZE 22" x 34" (559mm x 864mm)

PLOT: 09/03/11 10:47:57 AM

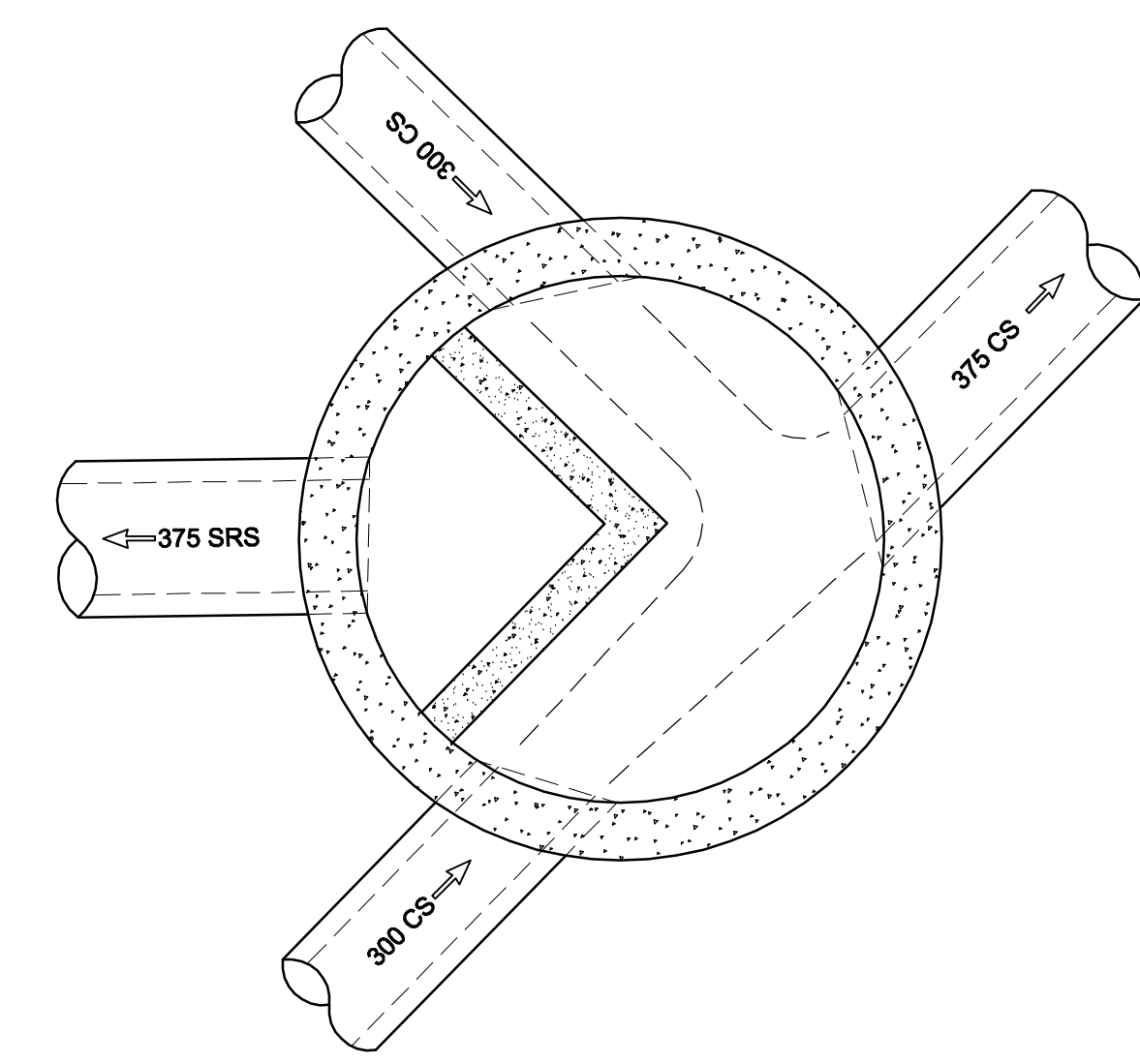
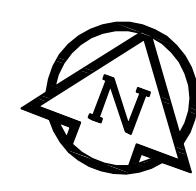
AECOM REVIEW DRFT CHK WJD
JMA FILE NAME: D265-177-08_01-C-1013_RX.dwg Saved By: [REDACTED]



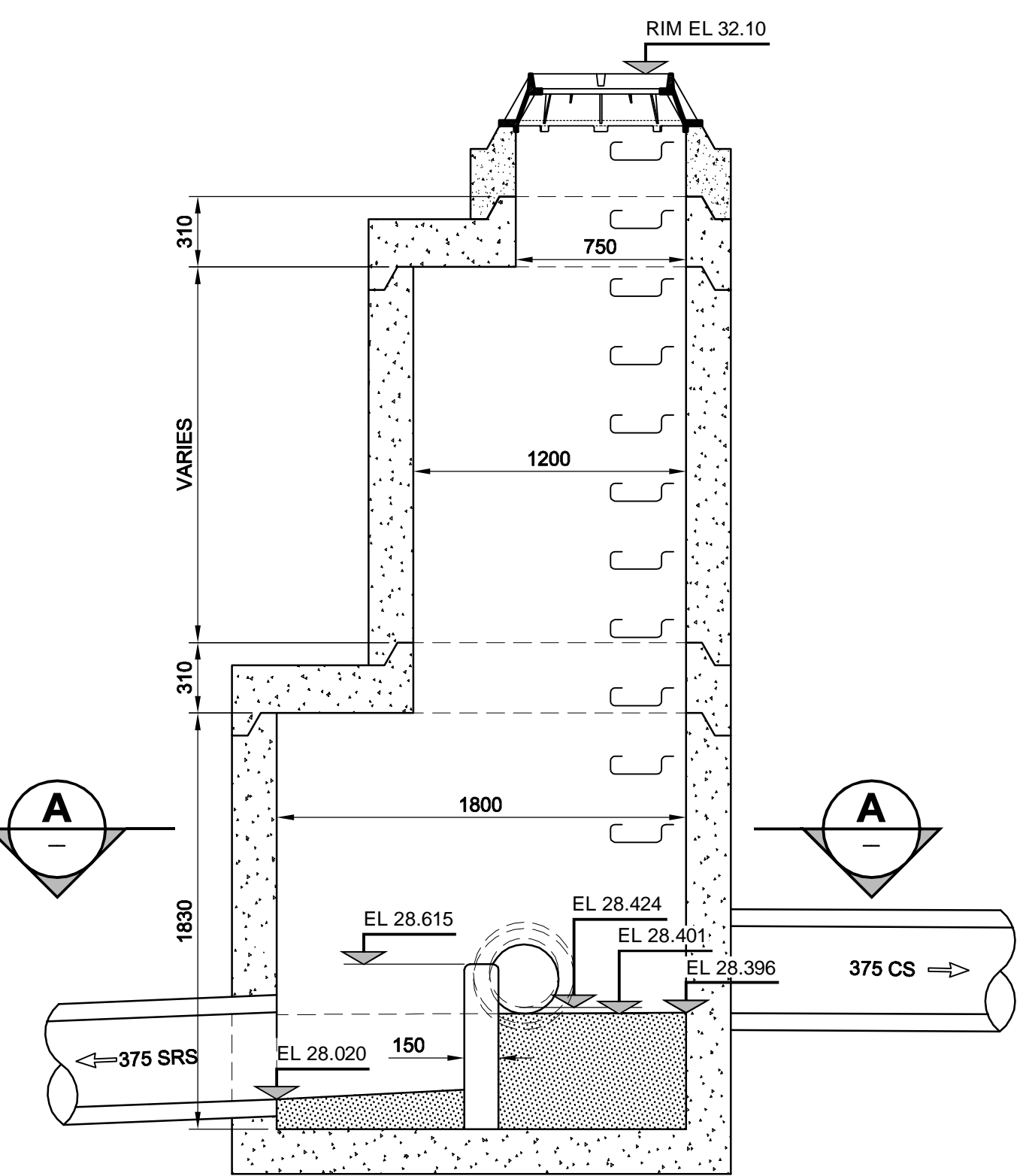
CHAINAGE ALONG S PL



FOR CONTINUATION - REFER TO DWG LD-3406



SECTION A
SCALE 1:25



MANHOLE 30 OVERFLOW DETAIL
SCALE 1:25

- CONSTRUCTION NOTES:**
1. THE LOCATION OF ALL SERVICES IS TO BE CONFIRMED IN THE FIELD.
 2. INSTALL NEW SEWERS AND CATCHBASIN LEADS BY TRENCHLESS METHODS WHEREVER POSSIBLE.
 3. RENEW/REHABILITATE CATCHBASINS & RENEW CATCHBASIN LEADS WHERE NOTED.



BID OPPORTUNITY NO. 12-2009

150 mm WM	WATERMAIN	150 mm WM	EXISTING	CURB STOP	150 mm WM	WATERMAIN	150 mm WM	LOCATION APPROVED
	HYDRANT		---	REDUCER		HYDRANT		UNDERGROUND STRUCTURES
	LAND DRAINAGE SEWER		---	COUPLING		LAND DRAINAGE SEWER		SUPR. U/G STRUCTURES DATE COMMITTEE
	WASTE WATER SEWER		---	ANODE		LAND DRAINAGE SEWER		NOTE:
	MANHOLE		---	HYDRO		WASTE WATER SEWER		LOCATION OF UNDERGROUND STRUCTURES AS SHOWN ARE BASED ON THE BEST INFORMATION AVAILABLE. BUT NO GUARANTEE IS GIVEN THAT ALL EXISTING UTILITIES ARE SHOWN OR THAT THE GIVEN LOCATIONS ARE EXACT. CONFIRMATION OF EXISTENCE AND EXACT LOCATION OF ALL SERVICES MUST BE OBTAINED FROM THE INDIVIDUAL UTILITIES BEFORE PROCEEDING WITH CONSTRUCTION.
	CATCH BASIN		---	MTS		PAVEMENT CROWN		
	CURB INLET		---	GAS		N/W PROPERTY LINE		
	CULVERT		---	TESTHOLE		S/E PROPERTY LINE		
	PIPE ABANDONMENTS		---	LAMP STANDARD		N/W GUTTER		
	SURVEY BAR		---	TREE		S/E GUTTER		
	EXISTING		---	LEGEND - PLAN		LEGEND - PROFILE		
	NEW		---	LEGEND - PROFILE		NEW		

NO.	REVISIONS	YYMMDD	BY
0	ISSUED FOR CONSTRUCTION	03/10/09	KMB

AECOM		DESIGNED BY: GEB / DME		CHECKED BY: FMI	
DRAWN BY: KMB		APPROVED BY: AN		RELEASED FOR CONSTRUCTION: C. Boulet	
HOR. SCALE: 1:250		VERT. SCALE: 1:50		DATE: March 10, 2009	

PROFESSIONAL'S SEAL
Revision 0
Issued for Construction
WAS SEALED BY
A. NAGY
AND DATED
March 10, 2009
CONSULTANT DRAWING NO. 13
D265-177-08

THE CITY OF WINNIPEG
WATER AND WASTE DEPARTMENT

ALEXANDER/BANNATYNE
COMBINED SEWER RELIEF
CONTRACT 8
ELLICE AVENUE
SMITH STREET
TO 20m W OF GARRY STREET

SHEET 13 OF 18
CITY DRAWING NUMBER
LD-3407
REV 0