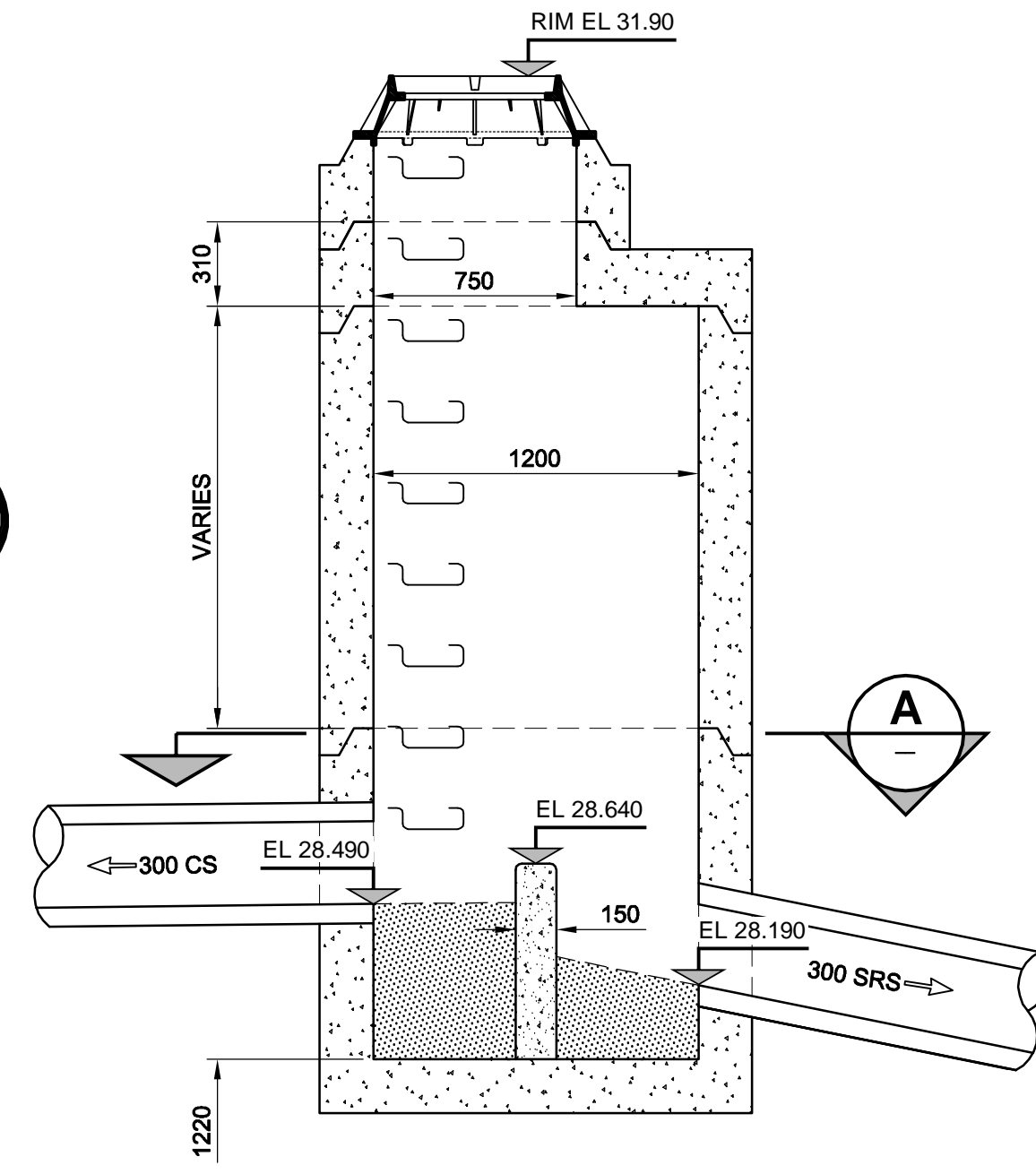
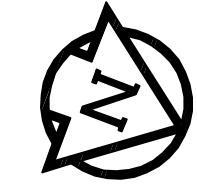
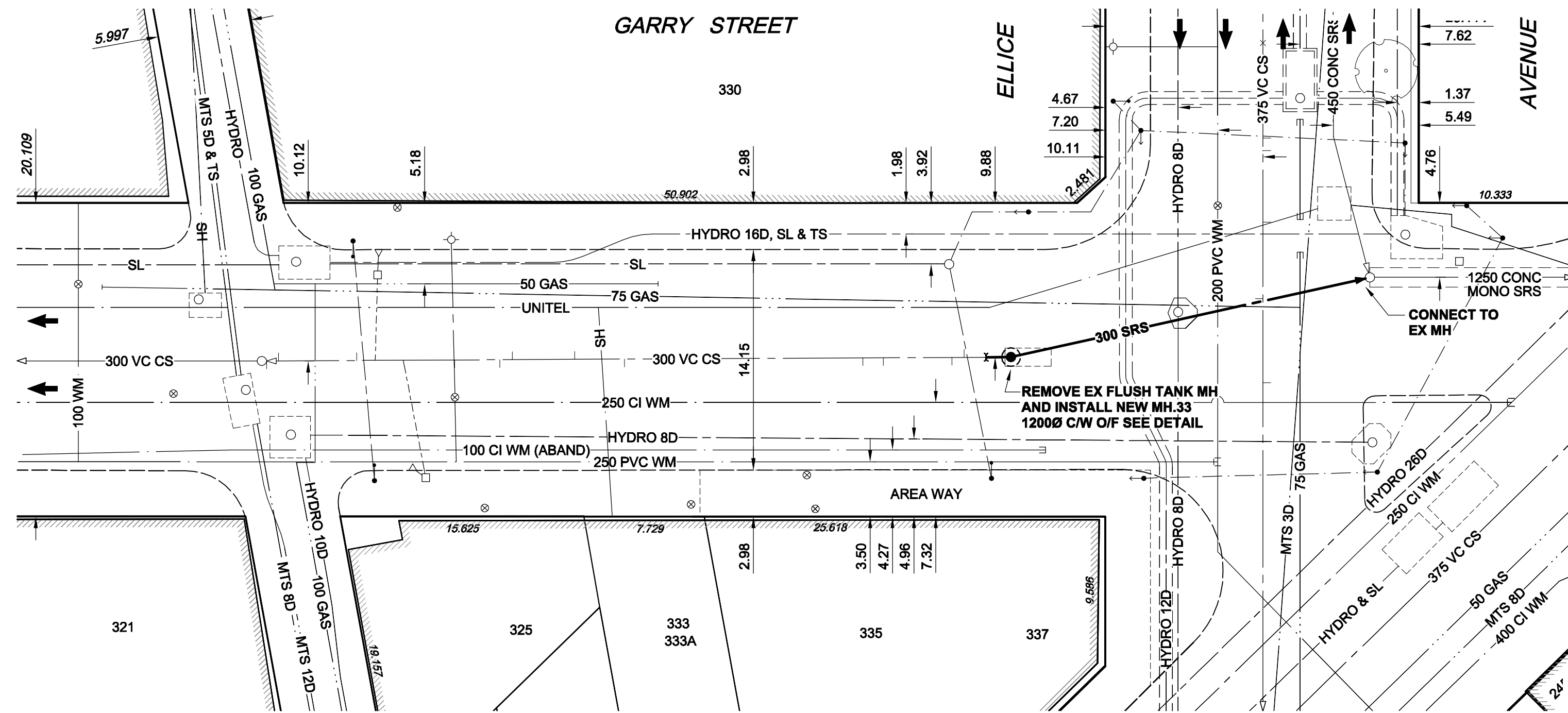
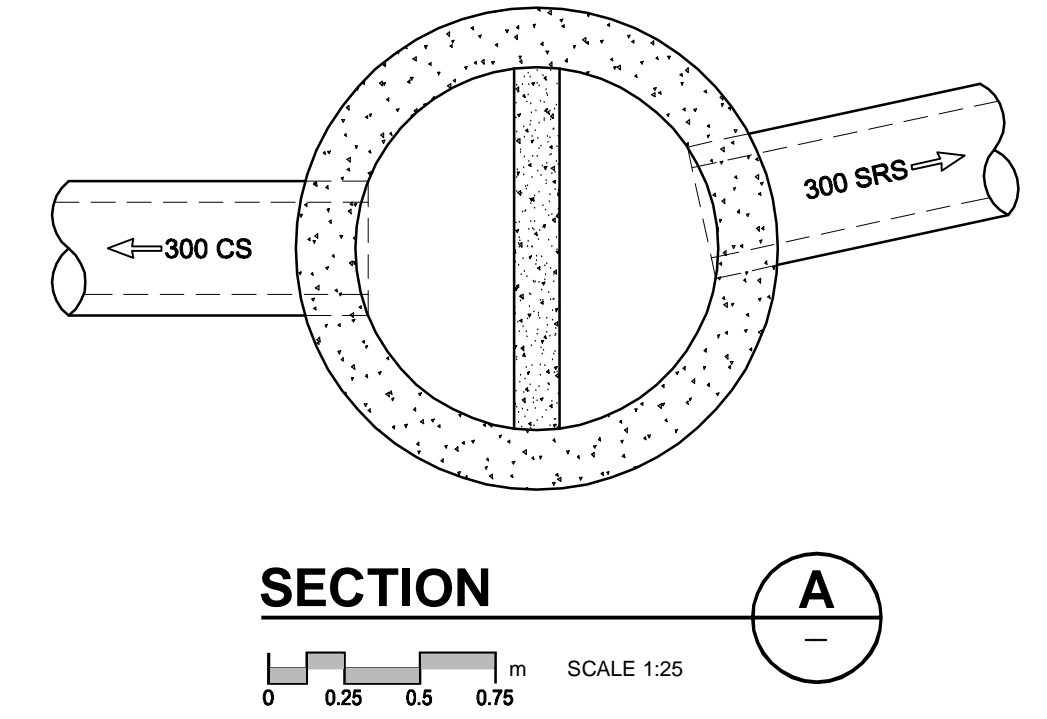


CHAINAGE ALONG W PL



MANHOLE 33 OVERFLOW DETAIL

TYPICAL MANHOLE REQUIREMENTS AS PER SD-010



CONSTRUCTION NOTES:

1. THE LOCATION OF ALL SERVICES IS TO BE CONFIRMED IN THE FIELD.
2. INSTALL NEW SEWERS AND CATCHBASIN LEADS BY TRENCHLESS METHODS WHEREVER POSSIBLE.
3. RENEW/REHABILITATE CATCHBASINS & RENEW CATCHBASIN LEADS WHERE NOTED.

AECOM
 Certificate of Authorization
 AECOM Canada Ltd.
 No. 4671 Date: March 10, 2009

BID OPPORTUNITY NO. 12-2009

EXISTING	LEGEND - PLAN	NEW	EXISTING	LEGEND - PROFILE	NEW	EXISTING	LEGEND - PROFILE	NEW
150 mm WM	WATERMAIN	150 mm WM	150 mm WM	WATERMAIN	150 mm WM	WATERMAIN	150 mm WM	WATERMAIN
300 mm LDS	LAND DRAINAGE SEWER	300 mm LDS	300 mm LDS	LAND DRAINAGE SEWER	300 mm LDS	LAND DRAINAGE SEWER	300 mm LDS	LAND DRAINAGE SEWER
250 mm WWS	WASTE WATER SEWER	250 mm WWS	250 mm WWS	WASTE WATER SEWER	250 mm WWS	WASTE WATER SEWER	250 mm WWS	WASTE WATER SEWER
○	MANHOLE	●	○	MANHOLE	●	MANHOLE	●	MANHOLE
□	CATCH BASIN	■	□	CATCH BASIN	■	CATCH BASIN	■	CATCH BASIN
△	CURB INLET	▲	△	CURB INLET	▲	CURB INLET	▲	CURB INLET
▭	CULVERT	▭	▭	CULVERT	▭	CULVERT	▭	CULVERT
—	PIPE ABANDONMENTS	—	—	PIPE ABANDONMENTS	—	PIPE ABANDONMENTS	—	PIPE ABANDONMENTS
+	SURVEY BAR	+	+	SURVEY BAR	+	SURVEY BAR	+	SURVEY BAR
○	HYDRANT	○	○	HYDRANT	○	HYDRANT	○	HYDRANT
+	VALVE	+	+	VALVE	+	VALVE	+	VALVE
—	ANODE	—	—	ANODE	—	ANODE	—	ANODE
—	HYDRO	—	—	HYDRO	—	HYDRO	—	HYDRO
—	MTS	—	—	MTS	—	MTS	—	MTS
—	GAS	—	—	GAS	—	GAS	—	GAS
—	TESTHOLE	—	—	TESTHOLE	—	TESTHOLE	—	TESTHOLE
—	LAMP STANDARD	—	—	LAMP STANDARD	—	LAMP STANDARD	—	LAMP STANDARD
—	TREE	—	—	TREE	—	TREE	—	TREE

LOCATION APPROVED
 UNDERGROUND STRUCTURES

SUPR. U/G STRUCTURES DATE COMMITTEE

NOTE:
 LOCATION OF UNDERGROUND STRUCTURES AS SHOWN ARE BASED ON THE BEST INFORMATION AVAILABLE. BUT NO GUARANTEE IS GIVEN THAT ALL EXISTING UTILITIES ARE SHOWN OR THAT THE GIVEN LOCATIONS ARE EXACT. CONFIRMATION OF EXISTENCE AND EXACT LOCATION OF ALL SERVICES MUST BE OBTAINED FROM THE INDIVIDUAL UTILITIES BEFORE PROCEEDING WITH CONSTRUCTION.

NO.	REVISIONS	YYMMDD	BY
0	ISSUED FOR CONSTRUCTION	03/10/09	KMB

AECOM		DESIGNED BY GEB / DME		CHECKED BY FMI	
DRAWN BY KMB		APPROVED BY AN		RELEASED FOR CONSTRUCTION	
HOR. SCALE 1:250		DATE March 10, 2009		C. Boulet	
VERT. SCALE 1:50				DATE March 10 / 09	

PROFESSIONAL'S SEAL
 Revision 0
 Issued for Construction
 WAS SEALED BY
 A. NAGY
 AND DATED
 March 10, 2009
 CONSULTANT DRAWING NO. 14
 D265-177-08

THE CITY OF WINNIPEG
 WATER AND WASTE DEPARTMENT

ALEXANDER/BANNATYNE
 COMBINED SEWER RELIEF
 CONTRACT 8

GARRY STREET
 ELLICE AVENUE
 TO 28m N OF PORTAGE AVENUE

SHEET 14 OF 18
 CITY DRAWING NUMBER
LD-3408
 REV 0