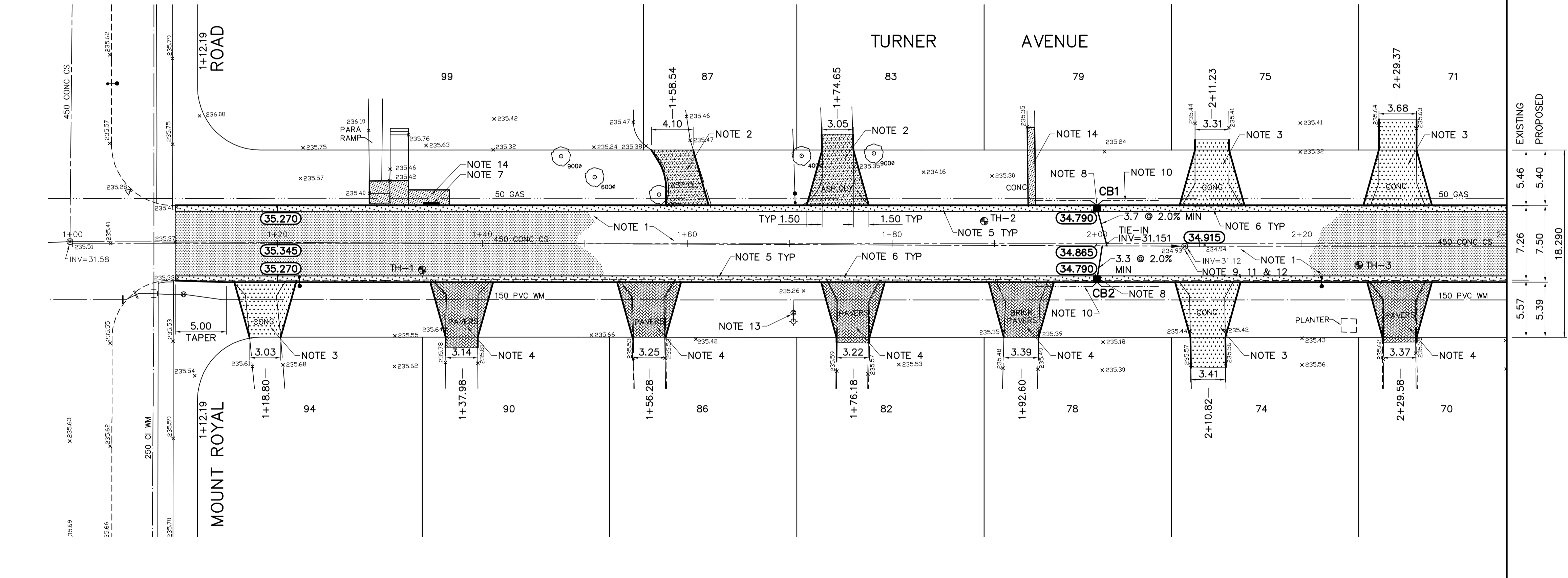
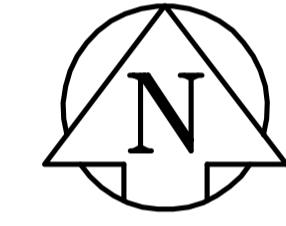


DESCRIPTION	RIM	INVERT			
		NORTH	SOUTH	EAST	WEST
CB1	34.79		33.19		
CB2	34.79	33.19			



**REFERENCE NOTES**

- PAVEMENT DIMENSIONS ARE TO BACK OF CURB
- ADD 200.000 TO DESIGN ELEVATIONS TO OBTAIN GEODETIC DATUM
- BASELINE IS CENTRE LINE RIGHT-OF-WAY
- PROPERTY LINES OBTAINED FROM CITY OF WINNIPEG L.B.I.S., AND NO SCALE FACTOR WAS APPLIED
- REFER TO AECOM FIELD BOOK NO. 4618

**CONSTRUCTION NOTES**

- REMOVE EXISTING PAVEMENT AND CONSTRUCT NEW 100mm ASPHALTIC PAVEMENT (TYPE 1A)
- REMOVE EXISTING PAVEMENT AND CONSTRUCT NEW 150mm REINFORCED CONCRETE PAVEMENT c/w 50mm ASPHALT OVERLAY (TYPE 1A)
- REMOVE EXISTING CONCRETE AND CONSTRUCT NEW 150mm REINFORCED CONCRETE PAVEMENT
- REMOVE AND REINSTALL EXISTING PAVING STONES AND CONSTRUCT 150mm HT. CONCRETE BARRIER CURB EDGING
- CONSTRUCT NEW BARRIER CURB AND GUTTER (180mm HT)
- CONSTRUCT NEW LIP CURB AND GUTTER (40mm HT)
- CONSTRUCT NEW CURB RAMP AND GUTTER (10mm HT INTEGRAL)
- INSTALL NEW CURB AND GUTTER INLET c/w CATCH BASIN (SD-024) AND CONNECT NEW 250mm LEAD TO EXISTING COMBINED SEWER
- REMOVE EXISTING COVER AND PLACE NEW SOLID COVER (AP-005)
- INSTALL 150mm SUBDRAIN
- ADJUST EXISTING MANHOLE/CATCH BASIN TO GRADE
- INSTALL NEW CAST IRON RISER RING
- ADJUST EXISTING WATER VALVE TO GRADE
- CONSTRUCT NEW CONCRETE SIDEWALK



**METRIC**  
WHOLE NUMBERS INDICATE MILLIMETRES  
DECIMALIZED NUMBERS INDICATE METRES

EXISTING	LEGEND - PLAN	PROPOSED	EXISTING	LEGEND - PLAN	PROPOSED	EXISTING	LEGEND - PROFILE	PROPOSED
150 mm W.M.	WATERMAIN	150 mm W.M.	HYDRO	M.T.S.	x	○	PROFILE	
300mm L.D.S.	LAND DRAINAGE SEWER	300mm L.D.S.	CONCRETE	ASPHALT	○	○	NORTH/WEST GUTTER	
250mm W.W.S.	WASTEWATER SEWER	250mm W.W.S.	PROPERTY LINE	SURVEY BAR	○	○	SOUTH/EAST GUTTER	
	MANHOLE		ELEVATION	(35.750)	○	○	N/W PROPERTY LINE	
	CATCH BASIN		TREE		○	○	S/E PROPERTY LINE	
	CURB INLET		SIDEWALK RAMP					
	JUNCTIONS		CONCRETE SIDEWALK					
	CULVERT		FENCE					
	GAS							

**LOCATION APPROVED UNDERGROUND STRUCTURES**

SUPV. U/G STRUCTURES DATE COMMITTEE

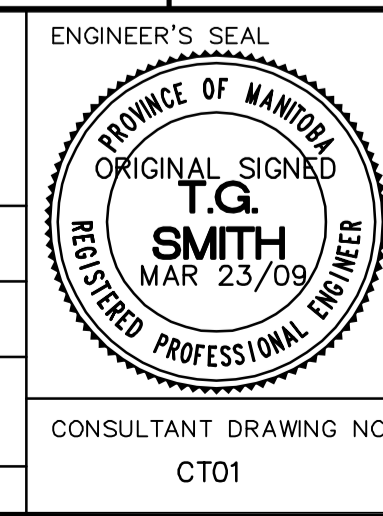
**NOTE:**  
LOCATION OF UNDERGROUND STRUCTURES AS SHOWN ARE BASED ON THE BEST INFORMATION AVAILABLE, BUT NO GUARANTEE IS GIVEN THAT ALL EXISTING UTILITIES ARE SHOWN OR THAT THE GIVEN LOCATIONS ARE EXACT. CONFIRMATION OF EXISTENCE AND EXACT LOCATION OF ALL SERVICES MUST BE OBTAINED FROM THE INDIVIDUAL UTILITIES BEFORE PROCEEDING WITH CONSTRUCTION.

B.M. 39-003 1/4 in. in East end of N. Conc. foundation of N. side of Steeple Tower of Silver Heights United Church No. 199 Garrison St.

NO.	REVISIONS	DATE	BY
0	ISSUED FOR TENDER	03/23/09	BC
A	ISSUED FOR REVIEW	03/09/09	BC

**AECOM**

DESIGNED BY	BC	CHECKED BY	TGS
DRAWN BY	BC	APPROVED BY	
HOR. SCALE: 1=250		RELEASED FOR CONSTRUCTION BY:	
VERTICAL: 1=10		DATE	



**THE CITY OF WINNIPEG**  
PUBLIC WORKS DEPARTMENT  
ENGINEERING DIVISION

**TURNER AVENUE**  
MOUNT ROYAL ROAD TO MOUNT ROYAL ROAD

PAVEMENT RECONSTRUCTION  
PLAN/PROFILE  
MOUNT ROYAL ROAD TO STATION 2+40

CITY DRAWING NUMBER  
SHEET 1 OF 4

CONSULTANT DRAWING NO. CT01