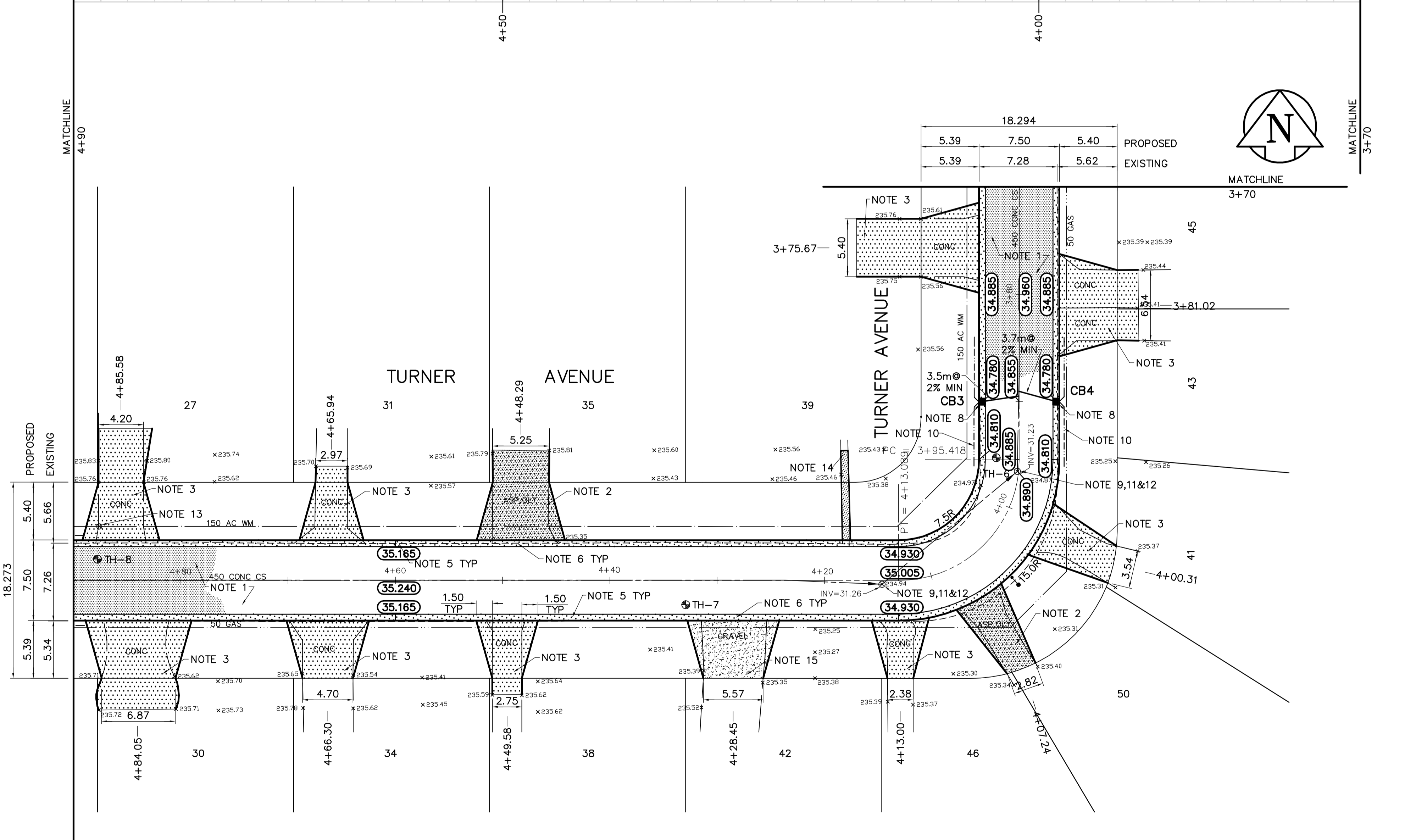
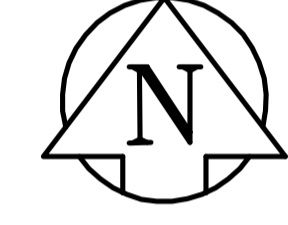


DESCRIPTION	RIM	INVERT		
		NORTH	SOUTH	WEST
CB3	34.780			33.180
CB4	34.780			33.180



**REFERENCE NOTES**

- A. PAVEMENT DIMENSIONS ARE TO BACK OF CURB
- B. ADD 200.000 TO DESIGN ELEVATIONS TO OBTAIN GEODETIC DATUM
- C. BASELINE IS CENTRE LINE RIGHT-OF-WAY
- D. PROPERTY LINES OBTAINED FROM CITY OF WINNIPEG L.B.I.S., AND NO SCALE FACTOR WAS APPLIED
- E. REFER TO AECOM FIELD BOOK NO. 4618
- F. ALL DRIVEWAYS SHOWN ON PLAN TO BE RECONSTRUCTED LESS THAN 3.0m WIDE AT PROPERTY LINE SHALL BE REVIEWED WITH THE HOME OWNER. UPON APPROVAL FROM THE HOME OWNER THE APPROACHES SHALL BE CONSTRUCTED TO 3.0m WIDE AT THE PROPERTY LINE

**CONSTRUCTION NOTES**

1. REMOVE EXISTING PAVEMENT AND CONSTRUCT NEW 100mm ASPHALTIC PAVEMENT (TYPE 1A)
2. REMOVE EXISTING PAVEMENT AND CONSTRUCT NEW 150mm REINFORCED CONCRETE PAVEMENT c/w 50mm ASPHALT OVERLAY (TYPE 1A)
3. REMOVE EXISTING CONCRETE AND CONSTRUCT NEW 150mm REINFORCED CONCRETE PAVEMENT
4. REMOVE AND REINSTALL EXISTING PAVING STONES AND CONSTRUCT 150mm HT. CONCRETE BARRIER CURB EDGING
5. CONSTRUCT NEW BARRIER CURB AND GUTTER (180mm HT)
6. CONSTRUCT NEW LIP CURB AND GUTTER (40mm HT)
7. CONSTRUCT NEW CURB RAMP AND GUTTER (10mm HT INTEGRAL)
8. INSTALL NEW CURB AND GUTTER INLET c/w CATCH BASIN (SD-024) AND CONNECT NEW 250mm LEAD TO EXISTING COMBINED SEWER
9. REMOVE EXISTING COVER AND PLACE NEW SOLID COVER (AP-005)
10. INSTALL 150mm SUBDRAIN
11. ADJUST EXISTING MANHOLE/CATCH BASIN TO GRADE
12. INSTALL NEW CAST IRON RISER RING
13. ADJUST EXISTING WATER VALVE TO GRADE
14. CONSTRUCT NEW CONCRETE SIDEWALK
15. CONSTRUCT NEW GRANULAR APPROACH



**METRIC**  
WHOLE NUMBERS INDICATE MILLIMETRES  
DECIMALIZED NUMBERS INDICATE METRES

150 mm W.M.	WATERMAIN	150 mm W.M.	HYDRO	300mm L.D.S.	LAND DRAINAGE SEWER	250mm W.W.S.	WASTEWATER SEWER	MANHOLE	CATCH BASIN	CURB INLET	JUNCTIONS	CULVERT	GAS	EXISTING	LEGEND - PLAN	PROPOSED	EXISTING	LEGEND - PROFILE	PROPOSED	
◇	HYDRANT	+	M.T.S.	○	○	○	○	○	○	○	○	○	○	○	○	○	○	○	○	○
○	VALVE	○	CONCRETE	○	○	○	○	○	○	○	○	○	○	○	○	○	○	○	○	○
○	LAND DRAINAGE SEWER	○	ASPHALT	○	○	○	○	○	○	○	○	○	○	○	○	○	○	○	○	○
○	WASTEWATER SEWER	○	PROPERTY LINE	○	○	○	○	○	○	○	○	○	○	○	○	○	○	○	○	○
○	MANHOLE	○	SURVEY BAR	○	○	○	○	○	○	○	○	○	○	○	○	○	○	○	○	○
○	CATCH BASIN	○	ELEVATION	○	○	○	○	○	○	○	○	○	○	○	○	○	○	○	○	○
○	CURB INLET	○	TREE	○	○	○	○	○	○	○	○	○	○	○	○	○	○	○	○	○
○	JUNCTIONS	○	SIDEWALK RAMP	○	○	○	○	○	○	○	○	○	○	○	○	○	○	○	○	○
○	CULVERT	○	CONCRETE SIDEWALK	○	○	○	○	○	○	○	○	○	○	○	○	○	○	○	○	○
○	GAS	○	FENCE	○	○	○	○	○	○	○	○	○	○	○	○	○	○	○	○	○

**LOCATION APPROVED UNDERGROUND STRUCTURES**

SUPV. U/G STRUCTURES DATE COMMITTEE

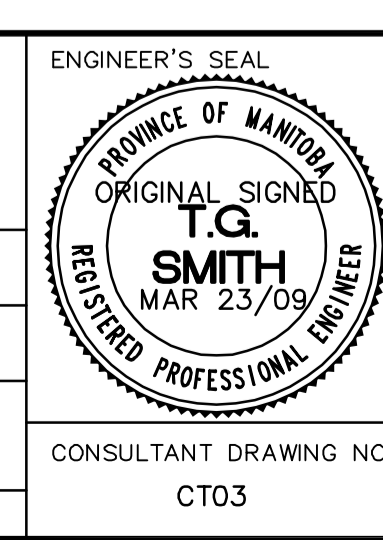
**NOTE:**  
LOCATION OF UNDERGROUND STRUCTURES AS SHOWN ARE BASED ON THE BEST INFORMATION AVAILABLE, BUT NO GUARANTEE IS GIVEN THAT ALL EXISTING UTILITIES ARE SHOWN OR THAT THE GIVEN LOCATIONS ARE EXACT. CONFIRMATION OF EXISTENCE AND EXACT LOCATION OF ALL SERVICES MUST BE OBTAINED FROM THE INDIVIDUAL UTILITIES BEFORE PROCEEDING WITH CONSTRUCTION.

B.M. 39-003 1/4 in. East end face of N. Conc. foundation of N. side of Steeple Tower of Silver Heights United Church No. 199 Garrison St.

NO.	REVISIONS	DATE	BY
0	ISSUED FOR TENDER	03/23/09	BC
A	ISSUED FOR REVIEW	03/09/09	BC

**AECOM**

DESIGNED BY	CHECKED BY
BC	TGS
DRAWN BY	APPROVED BY
BC	
HOR. SCALE:	VERTICAL:
1=250	1=10
RELEASED FOR CONSTRUCTION BY:	DATE



**THE CITY OF WINNIPEG**  
PUBLIC WORKS DEPARTMENT  
ENGINEERING DIVISION

**TURNER AVENUE**  
MOUNT ROYAL ROAD TO MOUNT ROYAL ROAD

PAVEMENT RECONSTRUCTION  
PLAN/PROFILE  
STATION 3+70 TO STATION 4+90

CITY DRAWING NUMBER  
SHEET 3 OF 4

CONSULTANT DRAWING NO. CT03