

CONSTRUCTION NOTES FOR PATHWAY:

1. STATIONING ON SOUTH EDGE OF PROPOSED PATHWAY.
2. STATIONING 1+000 AT ISLAND SHORE BOULEVARD GUTTER.
3. SEE P-3300-22 FOR TYPICAL CROSS SECTIONS AND DETAILS.
4. LEGAL PLAN AND UNDERGROUND INFORMATION FROM CITY OF WINNIPEG LBIS.
5. CONTRACTOR TO TAKE PRECAUTIONARY STEPS TO AVOID DAMAGE FROM CONSTRUCTION ACTIVITIES TO TREES WITHIN THE LIMITS OF CONSTRUCTION.
6. LOCATION OF EXISTING SERVICES TO BE CONFIRMED IN THE FIELD BY THE CONTRACTOR.
7. LIMITS OF PATHWAY, DITCH, AND BOULEVARD WORK TO BE FINALIZED IN THE FIELD BY THE CONTRACT ADMINISTRATOR.
8. PATHWAY MAX CROSS SLOPE OF 2% AND MAX LONGITUDINAL SLOPE OF 5%.
9. SEED DITCH AND SOD BERM AFTER FINAL GRADING AND TOPSOIL COMPLETE.

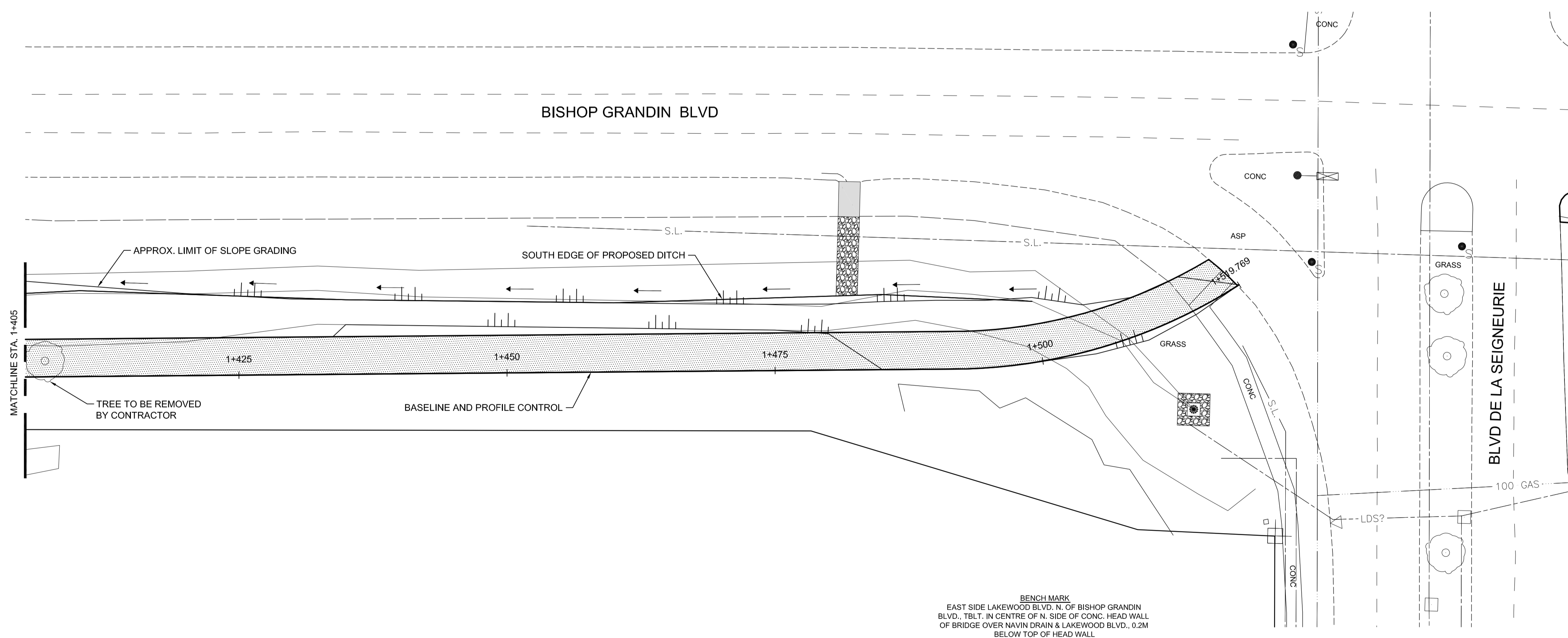
METRIC

WHOLE NUMBERS INDICATE MILLIMETRES
DECIMALIZED NUMBERS INDICATE METRES

WARNING

IF POWER EQUIPMENT OR EXPLOSIVES ARE TO BE USED FOR EXCAVATION ON THIS PROJECT THE CONTRACTOR MUST:

1. NOTIFY THE GAS COMPANY OF THE PROPOSED LOCATION OF EXCAVATION.
2. TAKE PRECAUTION TO AVOID DAMAGE TO GAS COMPANY INSTALLATIONS SEE PROVINCIAL REGULATION 210/72 FOR DETAILS.



BENCH MARK
EAST SIDE LAKEWOOD BLVD. N. OF BISHOP GRANDIN BLVD. TBLT IN CENTRE OF N. SIDE OF CONC. HEAD WALL OF BRIDGE OVER NAVIN DRAIN & LAKEWOOD BLVD., 0.2M BELOW TOP OF HEAD WALL



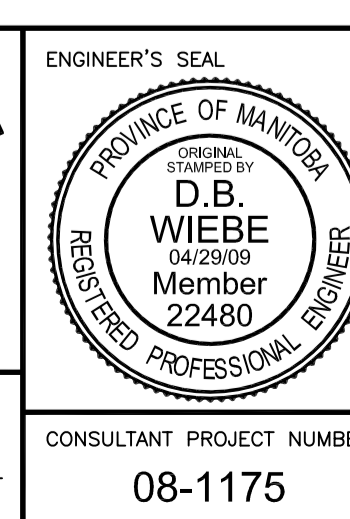
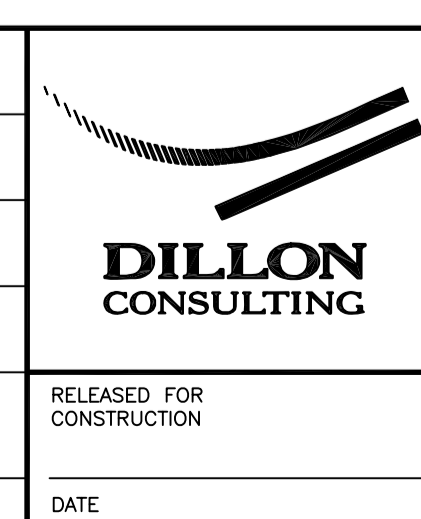
G:\CAD\081175\Contract\Roadway\081175-BISHOP-FAITHWAY.dwg

150 WM	WATERMAIN	150 WM	HYDRO	HYDRO	HYDRO	150 mm W.M.	WATERMAIN	150 mm W.M.
⊕	HYDRANT	⊕	MTS	MTS	MTS	+	HYDRANT	+
⊗	VALVE	⊗				×	VALVE	×
300 LDS	LAND DRAINAGE SEWER	300 LDS				300 mm L.D.S.	LAND DRAINAGE SEWER	300 mm L.D.S.
250 WWS	WASTE WATER SEWER	250 WWS				250 mm W.W.S.	WASTE WATER SEWER	250 mm W.W.S.
○	MANHOLE	●				— · — · —	PROFILE	— · — · —
□	CATCH BASIN	■				— ▨ — ▨ —	NORTH/WEST GUTTER	— ▨ — ▨ —
▽	CURB INLET	▽				— ▨ — ▨ —	SOUTH/EAST GUTTER	— ▨ — ▨ —
— · — · —	JUNCTIONS	— · — · —				— ▨ — ▨ —	NORTH/WEST T/LANE	— ▨ — ▨ —
— · — · —	CULVERT	— · — · —				— ▨ — ▨ —	SOUTH/EAST T/LANE	— ▨ — ▨ —
100 GAS	GAS	100 GAS				— ▨ — ▨ —	PARAPLEGIC RAMP	— ▨ — ▨ —
— · — · —	EXISTING	— · — · —	PROPOSED	EXISTING	— · — · —	— · — · —	LEGEND-PLAN	PROPOSED

UNDERGROUND STRUCTURES	
SUPV. U/G STRUCTURES COMMITTEE	DATE
NOTE: LOCATION OF UNDERGROUND STRUCTURES AS SHOWN ARE BASED ON THE BEST INFORMATION AVAILABLE, BUT NO GUARANTEE IS GIVEN THAT ALL EXISTING UTILITIES ARE SHOWN OR THAT THE GIVEN LOCATIONS ARE EXACT. CONFIRMATION OF EXISTENCE AND EXACT LOCATION OF ALL SERVICES MUST BE OBTAINED FROM THE INDIVIDUAL UTILITIES BEFORE PROCEEDING WITH CONSTRUCTION.	

B.M. ELEV.			
DESIGNED BY	SPC		
DRAWN BY	TJH		
CHECKED BY	DBW		
APPROVED BY	DPK		
HOR. SCALE	1:250		
VERTICAL	1:25		
RELEASSED FOR CONSTRUCTION			
DATE			
NO.	REVISIONS	DATE	BY
3	ISSUED FOR TENDER	04-29-09	TJH
2	ISSUED FOR REVIEW	03-20-09	TJH
1	ISSUED FOR 50% REVIEW	03-05-09	TJH

DESIGNED BY	SPC
DRAWN BY	TJH
CHECKED BY	DBW
APPROVED BY	DPK
HOR. SCALE	1:250
VERTICAL	1:25
RELEASSED FOR CONSTRUCTION	
DATE	



THE CITY OF WINNIPEG PUBLIC WORKS DEPARTMENT

BISHOP GRANDIN BLVD - EASTBOUND LAKEWOOD TO LAGIMODIERE

MULTI-USE PATHWAY CONSTRUCTION STA. 1+405 TO STA. 1+520

CITY DRAWING NUMBER: P-3300-16
SHEET 16 OF 27
CONSULTANT DRAWING NUMBER: -

CONSULTANT PROJECT NUMBER: 08-1175