

WATER SERVICE INFORMATION						
ADDRESS	SIZE(mm) & TYPE (STREET)	SIZE(mm) & TYPE (PROP)	SHORT & LONG MEASUREMENT	CORP. LOCATION	REMARKS	
1143 ASHBURN ST RESIDENTIAL	20 LEAD	20 LEAD	1.97 SNL HSE	17.55>NNL SARGENT	OPP S/C	RENEW TO 2" W/ 20 COPPER
1144 ASHBURN ST RESIDENTIAL	20 LEAD	20 LEAD	0.78 SNL HSE	17.88>NNL SARGENT	OPP S/C	RENEW TO 2" W/ 20 COPPER
1145 ASHBURN ST RESIDENTIAL	20 LEAD	20 LEAD	2.71 SNL HSE	23.60>NNL SARGENT	OPP S/C	RENEW TO 2" W/ 20 COPPER
1146 ASHBURN ST RESIDENTIAL	20 LEAD	20 LEAD	26.97>NNL SARGENT	31.25>NNL SARGENT	OPP S/C	RENEW TO 2" W/ 20 COPPER
1147 ASHBURN ST RESIDENTIAL	20 COPPER	12 COPPER	1.69>NNL HSE	23.60>NNL SARGENT	0.8 N OF S/C	RECONNECT SERVICE
1148 ASHBURN ST RESIDENTIAL	20 COPPER	12 COPPER	1.50>NNL HSE	33.44>NNL SARGENT	1.2 N OF S/C	RENEW TO 2" W/ 20 COPPER
1149 ASHBURN ST RESIDENTIAL	20 COPPER	12 COPPER	1.73>NNL HSE	31.25>NNL SARGENT	0.1 N OF S/C	RECONNECT SERVICE
1150 ASHBURN ST RESIDENTIAL	20 COPPER	12 COPPER	1.14>NNL HSE	40.06>NNL SARGENT	2.7 N OF S/C	RENEW TO 2" W/ 20 COPPER
1151 ASHBURN ST RESIDENTIAL	20 COPPER	12 COPPER	0.82>NNL HSE	54.84>NNL SARGENT	1.0 N OF S/C	RECONNECT SERVICE
1152 ASHBURN ST RESIDENTIAL	20 COPPER	12 COPPER	1.19>NNL HSE	54.84>NNL SARGENT	OPP S/C	RENEW TO 2" W/ 20 COPPER
1153 ASHBURN ST RESIDENTIAL	20 COPPER	12 COPPER	54.84>NNL SARGENT	50.74>NNL SARGENT	0.9 S OF S/C	RECONNECT SERVICE
1154 ASHBURN ST RESIDENTIAL	20 COPPER	12 COPPER	50.74>NNL SARGENT	3.23>NNL HSE	0.6 S OF S/C	RECONNECT SERVICE
1155 ASHBURN ST RESIDENTIAL	20 COPPER	12 COPPER	64.82>NNL SARGENT	0.80>NNL HSE	0.9 S OF S/C	RECONNECT SERVICE
1156 ASHBURN ST RESIDENTIAL	20 COPPER	12 COPPER	51.92>NNL SARGENT	2.89>NNL HSE	0.5 S OF S/C	RENEW TO 2" W/ 20 COPPER
1157 ASHBURN ST RESIDENTIAL	20 COPPER	12 COPPER	79.51>NNL SARGENT	0.80>NNL HSE	0.7 N OF S/C	RECONNECT SERVICE
1158 ASHBURN ST RESIDENTIAL	20 COPPER	12 COPPER	60.80>NNL SARGENT	94.96>NNL SARGENT	OPP S/C	RECONNECT SERVICE
1159 ASHBURN ST RESIDENTIAL	20 COPPER	12 COPPER	85.43>NNL SARGENT	0.85>NNL HSE	OPP S/C	RENEW TO 2" W/ 20 COPPER
1160 ASHBURN ST RESIDENTIAL	20 COPPER	12 COPPER	94.96>NNL SARGENT	2.81>NNL HSE	OPP S/C	RENEW TO 2" W/ 20 COPPER
1161 ASHBURN ST RESIDENTIAL	20 COPPER	12 COPPER	108.42>NNL SARGENT	0.90>NNL HSE	0.3 N OF S/C	RECONNECT SERVICE
1162 ASHBURN ST RESIDENTIAL	20 COPPER	12 COPPER	114.73>NNL SARGENT	0.95>NNL HSE	0.6 N OF S/C	RECONNECT SERVICE
1163 ASHBURN ST RESIDENTIAL	20 COPPER	12 COPPER	83.99>NNL SARGENT	0.75>NNL HSE	0.7 N OF S/C	DBL SERV. W/1172 RECONNECT SERVICE
1164 ASHBURN ST RESIDENTIAL	20 COPPER	12 COPPER	97.08>NNL SARGENT	2.09>NNL HSE	OPP S/C	RENEW TO 2" W/ 20 COPPER
1165 ASHBURN ST RESIDENTIAL	20 COPPER	12 COPPER	127.80>NNL SARGENT	0.76>NNL HSE	OPP S/C	DBL SERV. W/1170 RECONNECT SERVICE
1166 ASHBURN ST RESIDENTIAL	20 COPPER	12 COPPER	97.82>NNL SARGENT	1.39>NNL HSE	0.6 S OF S/C	RECONNECT SERVICE
1167 ASHBURN ST RESIDENTIAL	20 COPPER	12 COPPER	104.48>NNL SARGENT	1.98>NNL HSE	0.6 N OF S/C	RECONNECT SERVICE
1168 ASHBURN ST RESIDENTIAL	20 COPPER	12 COPPER	121.88>NNL SARGENT	1.98>NNL HSE	0.2 S OF S/C	RECONNECT SERVICE
1169 ASHBURN ST RESIDENTIAL	20 COPPER	12 COPPER	132.48>NNL SARGENT			

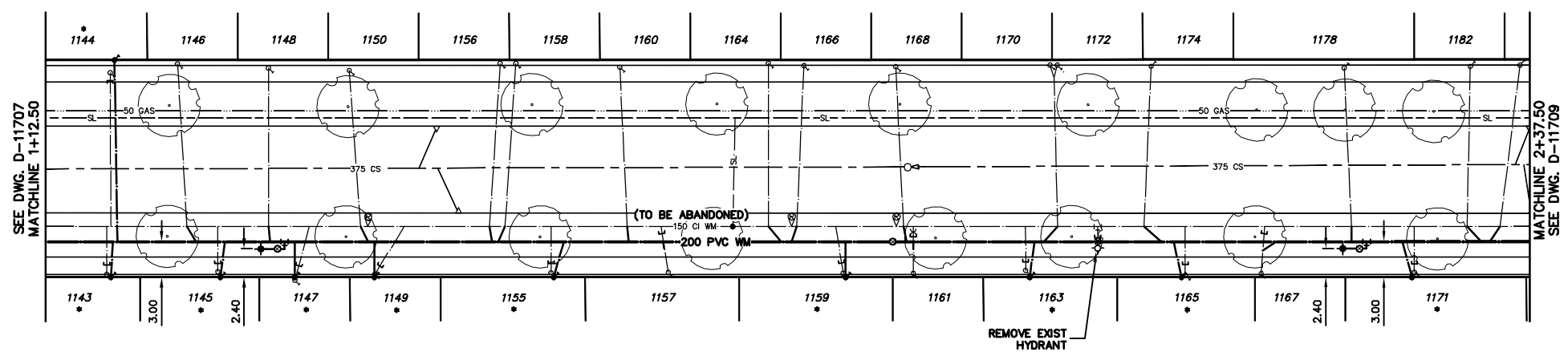
* SERVICES TO BE RENEWED TO 2" UPON CONFIRMATION BY THE CONTRACTOR OF EXISTING LEAD SERVICE. OBTAIN APPROVAL FROM CONTRACT ADMINISTRATOR PRIOR TO RENEWAL.

NOTE: CHAINAGES SHOWN ARE ALONG E L OF ASHBURN ST

CAUTION: GAS & SL ON W SIDE OF ASHBURN ST



- CONSTRUCTION NOTES**
1. EXPOSE EXISTING WATERMAIN & CONFIRM INVERTS PRIOR TO CONSTRUCTION.
 2. CONFIRM LOCATION OF ALL SERVICES IN THE FIELD.
 3. INSTALL WATERMAIN BY TRENCHLESS METHODS.
 4. TRENCHES AND EXCAVATIONS WITHIN 1 METRE OF A PAVED AREA INCLUDING SIDEWALKS SHALL BE CLASS 3 BACKFILL.
 5. ALL MATERIALS SHALL CONFORM TO THE CITY OF WINNIPEG STANDARD CONSTRUCTION SPECIFICATIONS.
 6. MINIMUM COVER TO TOP OF WATERMAIN SHALL BE 2.4 m.
 7. REPLACE ALL EXISTING LEAD SERVICES FROM PROPOSED WATERMAIN TO E.
 8. NOTIFY ALL AFFECTED RESIDENTS AND BUSINESSES 24 HOURS IN ADVANCE OF ANY WATER SHUTDOWNS OR DISRUPTION OF SERVICE.



2009 STREETS PROJECT ARE - ASHBURN STREET - NORTH CURB LINE SARGENT AVE TO SOUTH CURB WELLINGTON AVE. BOULEVARD GRADING AND PERMANENT RESTORATION WITHIN 2009 STREETS PROJECT ARE TO BE DONE BY OTHERS. PERMANENT SIDEWALK REPAIRS WITHIN 2009 STREETS PROJECT AREA TO BE DONE BY OTHERS.

METRIC
WHOLE NUMBERS INDICATE MILLIMETRES
DECIMALIZED NUMBERS INDICATE METRES

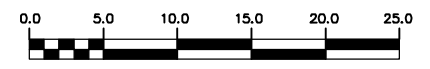
NOTE: ALL VALVES TO BE INSTALLED COUNTERCLOCKWISE TO CLOSE

WARNING

IF POWER EQUIPMENT OR EXPLOSIVES ARE TO BE USED FOR EXCAVATION ON THIS PROJECT THE CONTRACTOR MUST:

- 1) NOTIFY THE GAS COMPANY OF THE PROPOSED LOCATION OF EXCAVATION.
- 2) TAKE PRECAUTION TO AVOID DAMAGE TO GAS COMPANY INSTALLATIONS.

SEE PROVINCIAL REGULATION 210/72 FOR DETAILS



EXISTING	LEGEND-PLAN	PROPOSED	EXISTING	LEGEND-PLAN	PROPOSED	EXISTING	LEGEND-PROFILE	PROPOSED
200 WM	WATERMAIN	200 WM	SL, HYDRO	MTS	150 WM	WATERMAIN	150 WM	
⊕	HYDRANT	⊕	TRAFFIC SIGNALS	⊕	⊕	HYDRANT	⊕	
⊙	VALVE	⊙	GAS	50 GAS	300 LDS	LAND DRAINAGE SEWER	300 LDS	
525 LDS	LAND DRAINAGE SEWER	525 LDS	50 GAS	375 WWS	WASTEWATER SEWER	375 WWS		
375 WWS	WASTEWATER SEWER	375 WWS	SURVEY BAR	250 WWS	WASTEWATER SEWER	250 WWS		
○	MANHOLE	●	FENCE	⊕	⊕	PROFILE	⊕	
□	CATCH BASIN	■	POLE - HYDRO, MTS	⊕	⊕	GROUND ABOVE PIPE	⊕	
▽	CURB INLET	▽	CURB STOP	⊕	⊕	⊕ DITCH (NORTH & WEST)	⊕	
∇	REDUCER	∇	GUY ANCHOR	⊕	⊕	⊕ DITCH (SOUTH & EAST)	⊕	
X	COUPLER	X	LIGHT STANDARD	⊕	⊕	⊕ GUTTER (NORTH & WEST)	⊕	
⊕	ANODE	⊕	TREE	⊕	⊕	⊕ GUTTER (SOUTH & EAST)	⊕	

LOCATION APPROVED	B.M. ELEV.	FIELD BOOK #:
UNDERGROUND STRUCTURES	POSTED TO LBS	
SUPV. U/G STRUCTURES COMMITTEE	DATE	
NOTE:		
LOCATION OF UNDERGROUND STRUCTURES AS SHOWN ARE BASED ON THE BEST INFORMATION AVAILABLE BUT NO GUARANTEE IS GIVEN THAT ALL EXISTING UTILITIES ARE SHOWN OR THAT THE GIVEN LOCATIONS ARE EXACT. CONFIRMATION OF EXISTENCE AND EXACT LOCATION OF ALL SERVICES MUST BE OBTAINED FROM THE INDIVIDUAL UTILITIES BEFORE PROCEEDING WITH CONSTRUCTION.		
NO. REVISIONS	DATE	BY

CITY OF WINNIPEG
WATER AND WASTE
ENGINEERING DIVISION

DESIGNED BY: DB
CHECKED BY: NC

DRAWN BY: C/JH
APPROVED BY: KZ

HOR. SCALE: 1:250
VERTICAL: 1:50

RELEASED FOR CONSTRUCTION

DATE: 2009 03 10

ENGINEER'S SEAL

ORIGINAL SIGNED BY K.R. ZUREK 09/03/10

BID OPPORTUNITY 181-2009
FILENAME: D-11708.dwg
PLOT DATE: 2009 03 10

THE CITY OF WINNIPEG
WATER AND WASTE DEPARTMENT

2009 WATERMAIN RENEWALS
CONTRACT 3
ASHBURN STREET
112.50 N OF SARGENT AVENUE TO
137.50 N OF SARGENT AVENUE

SHEET 2 OF 10
CITY DRAWING NUMBER
D-11708