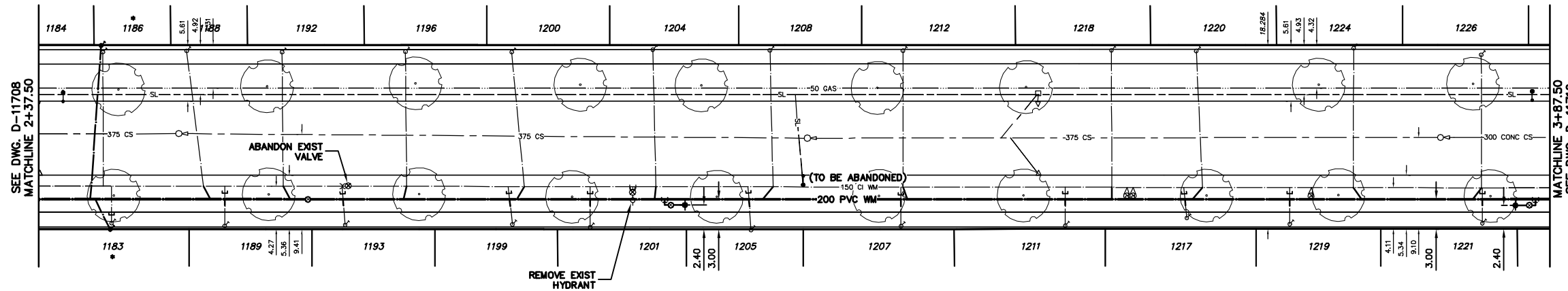


NOTE: CHAINAGES SHOWN ARE ALONG E R L OF ASHBURN ST

CAUTION:
GAS & SL ON W SIDE
OF ASHBURN ST

ASHBURN STREET



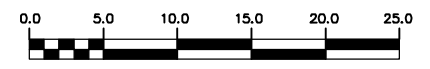
2009 STREETS PROJECT ARE - ASHBURN STREET - NORTH CURB LINE SARGENT AVE TO SOUTH CURB WELLINGTON AVE.
BOULEVARD GRADING AND PERMANENT RESTORATION WITHIN 2009 STREETS PROJECT ARE TO BE DONE BY OTHERS.
PERMANENT SIDEWALK REPAIRS WITHIN 2009 STREETS PROJECT AREA TO BE DONE BY OTHERS.

FOR CONSTRUCTION NOTES
SEE DRAWING D-11710

FOR SERVICE INFORMATION
SEE DRAWING D-11710

METRIC
WHOLE NUMBERS INDICATE MILLIMETRES
DECIMALIZED NUMBERS INDICATE METRES
NOTE: ALL VALVES TO BE INSTALLED COUNTERCLOCKWISE TO CLOSE

WARNING
IF POWER EQUIPMENT OR EXPLOSIVES ARE TO BE USED FOR EXCAVATION ON THIS PROJECT THE CONTRACTOR MUST:
1) NOTIFY THE GAS COMPANY OF THE PROPOSED LOCATION OF EXCAVATION.
2) TAKE PRECAUTION TO AVOID DAMAGE TO GAS COMPANY INSTALLATIONS.
SEE PROVINCIAL REGULATION 210/72 FOR DETAILS



200 WM	WATERMAIN	200 WM	SL, HYDRO	150 WM	WATERMAIN	150 WM
⊕	HYDRANT	⊕	MTS	⊕	HYDRANT	⊕
⊙	VALVE	⊙	TRAFFIC SIGNALS	⊙	VALVE	⊙
525 LDS	LAND DRAINAGE SEWER	525 LDS	GAS	50 GAS	300 LDS	LAND DRAINAGE SEWER
375 WWS	WASTEWATER SEWER	375 WWS	SURVEY BAR	250 WWS	WASTEWATER SEWER	250 WWS
○	MANHOLE	●	FENCE	⊕	PROFILE	⊕
□	CATCH BASIN	■	POLE - HYDRO, MTS	⊕	GROUND ABOVE PIPE	⊕
▽	CURB INLET	▽	CURB STOP	⊕	⊕ DITCH (NORTH & WEST)	⊕
◁	REDUCER	◁	GUY ANCHOR	⊕	⊕ DITCH (SOUTH & EAST)	⊕
X	COUPLER	X	LIGHT STANDARD	⊕	GUTTER (NORTH & WEST)	⊕
⊕	ANODE	⊕	TREE	⊕	GUTTER (SOUTH & EAST)	⊕
EXISTING	LEGEND-PLAN	PROPOSED	EXISTING	LEGEND-PLAN	PROPOSED	EXISTING
EXISTING	LEGEND-PROFILE	PROPOSED	EXISTING	LEGEND-PROFILE	PROPOSED	EXISTING

LOCATION APPROVED
UNDERGROUND STRUCTURES

SUPV. U/G STRUCTURES COMMITTEE DATE

NOTE:
LOCATION OF UNDERGROUND STRUCTURES AS SHOWN ARE BASED ON THE BEST INFORMATION AVAILABLE BUT NO GUARANTEE IS GIVEN THAT ALL EXISTING UTILITIES ARE SHOWN OR THAT THE GIVEN LOCATIONS ARE EXACT. CONFIRMATION OF EXISTENCE AND EXACT LOCATION OF ALL SERVICES MUST BE OBTAINED FROM THE INDIVIDUAL UTILITIES BEFORE PROCEEDING WITH CONSTRUCTION.

CITY OF WINNIPEG
WATER AND WASTE
ENGINEERING DIVISION

DESIGNED BY DB CHECKED BY NC
DRAWN BY C/JH APPROVED BY KZ

HOR. SCALE 1:250
VERTICAL 1:50

DATE 2009 03 10

ENGINEER'S SEAL
ORIGINAL SIGNED BY K.R. ZUREK 09/03/10

BID OPPORTUNITY 181-2009
FILENAME: D-11709.dwg
PLOT DATE: 2009 03 10

THE CITY OF WINNIPEG
WATER AND WASTE DEPARTMENT

2009 WATERMAIN RENEWALS
CONTRACT 3
ASHBURN STREET
137.50 N OF SARGENT AVENUE TO
75 S OF WELLINGTON AVENUE

SHEET 3 OF 10
CITY DRAWING NUMBER
D-11709