

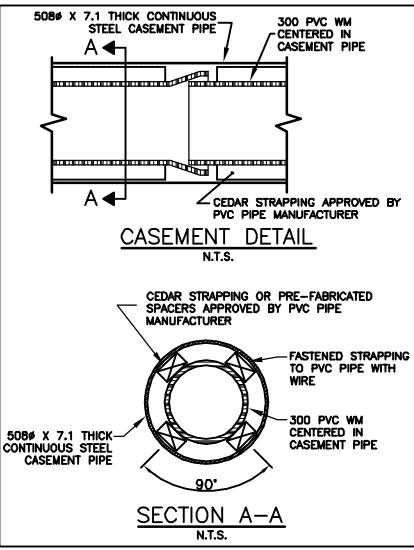
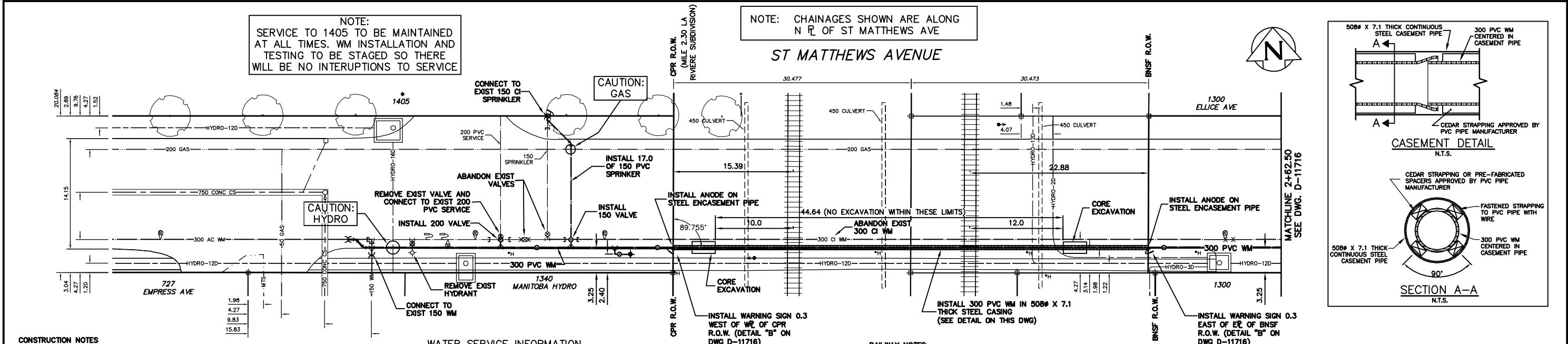
WATER CARRIER PIPE INFORMATION
 DIAMETER - 300mm
 MATERIAL - PVC
 WALL THICKNESS - 18.8mm
 PIPE CLASS - AWWA C900 DR18
 SURGE PRESSURE - 300 PSI (2.0MPa)
 OPERATING PRESSURE - 60 PSI (0.4 MPa)
 TEST PRESSURE - 150 PSI (1.0 MPa)
 INSTALLATION METHOD
 - PIPE ADVANCING WITH CORING
 - CORING HEAD TO BE MIN. 0.5m FROM CASING END, IN CASING

ENCASEMENT PIPE INFORMATION
 DIAMETER - 508 mm
 MATERIAL - STEEL - ASTM A53
 WALL THICKNESS - 7.1 mm MIN.
 YIELD STRENGTH - 241 MPa

NOTE:
 SERVICE TO 1405 TO BE MAINTAINED AT ALL TIMES. WM INSTALLATION AND TESTING TO BE STAGED SO THERE WILL BE NO INTERRUPTIONS TO SERVICE

NOTE: CHAINAGES SHOWN ARE ALONG N R OF ST MATTHEWS AVE

ST MATTHEWS AVENUE



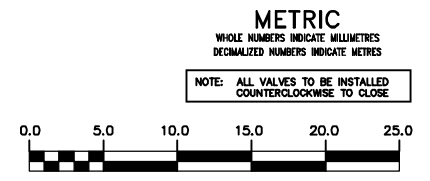
- CONSTRUCTION NOTES**
1. EXPOSE EXISTING WATERMAIN & CONFIRM INVERTS PRIOR TO CONSTRUCTION.
 2. LOCATION OF ALL SERVICES TO BE CONFIRMED IN THE FIELD.
 3. INSTALL WATERMAIN BY TRENCHLESS METHODS.
 4. TRENCHES AND EXCAVATIONS WITHIN 1 METRE OF A PAVED AREA INCLUDING SIDEWALKS SHALL BE CLASS 3 BACKFILL.
 5. ALL MATERIALS SHALL CONFORM TO THE CITY OF WINNIPEG STANDARD CONSTRUCTION SPECIFICATIONS.
 6. MINIMUM COVER TO TOP OF WATERMAIN SHALL BE 2.4 m.
 7. REPLACE ALL EXISTING LEAD SERVICES FROM PROPOSED WATERMAIN TO E.
 8. NOTIFY ALL AFFECTED RESIDENTS AND BUSINESSES 24 HOURS IN ADVANCE OF ANY WATER SHUTDOWNS OR DISRUPTION OF SERVICE.

WATER SERVICE INFORMATION

ADDRESS	SIZE(mm) & TYPE (STREET)	SIZE(mm) & TYPE (PROP)	SHORT & LONG MEASUREMENT	CORP. LOCATION	REMARKS
1300 ST MATTHEWS AV	200 AC	200 CI	5.98 WEL BLDG	OPP VALVE	RECONNECT SERVICE
1340 ST MATTHEWS AV	200 AC	200 CI	58.88 WEL STRATHCONA	---	NO SERVICE INFORMATION AVAILABLE
1405 ST MATTHEWS AV	150 SPRINKLER	150	34.86 E SW BLDG CRN.	OPP VALVE	RENEW TO R W/150 PVC SPRINKLER
1405 ST MATTHEWS AV	200 PVC	200	31.86 E SW BLDG CRN.	OPP VALVE	RECONNECT SERVICE
1300 ELLICE AVE	200	200	2.84 WEL BLDG	OPP VALVE	SERVICED OFF ST MATTHEWS
727 EMPRESS AVE	200	200	47.84 WEL STRATHCONA	OPP VALVE	RECONNECT SERVICE
727 EMPRESS AVE	200	200	50.61 EEL EMPRESS	OPP VALVE	SERVICED OFF ST MATTHEWS

* SERVICES TO BE RENEWED TO R UPON CONFIRMATION BY THE CONTRACTOR OF EXISTING LEAD SERVICE. OBTAIN APPROVAL FROM CONTRACT ADMINISTRATOR PRIOR TO RENEWAL.

- RAILWAY NOTES:**
1. RAILWAY CROSSING WILL BE CONSTRUCTED, MAINTAINED AND OPERATED IN ACCORDANCE TO TRANSPORT CANADA E-10 (STANDARDS RESPECTING PIPELINE CROSSINGS UNDER RAILWAYS).
 2. JACKING & ACCESS PITS SHALL NOT BE WITHIN 10 METERS FROM CENTERLINE OF TRACKS AND NOT ENCLOSED IN THE ZONE OF POTENTIAL LOADING.
 3. SUBMIT ENGINEERED SHORING/CAGE DRAWING STAMPED BY A PROFESSIONAL ENGINEER TO THE CONTRACT ADMINISTRATOR FOR APPROVAL BY CPR.
 4. NO CONSTRUCTION WILL BE PERMITTED UNTIL CONTRACTOR IS IN RECEIPT OF APPROVAL FROM CPR AND BNSF.



WARNING

IF POWER EQUIPMENT OR EXPLOSIVES ARE TO BE USED FOR EXCAVATION ON THIS PROJECT THE CONTRACTOR MUST:

- 1) NOTIFY THE GAS COMPANY OF THE PROPOSED LOCATION OF EXCAVATION.
- 2) TAKE PRECAUTION TO AVOID DAMAGE TO GAS COMPANY INSTALLATIONS.

SEE PROVINCIAL REGULATION 210/72 FOR DETAILS

EXISTING	LEGEND-PLAN	PROPOSED	EXISTING	LEGEND-PLAN	PROPOSED	EXISTING	LEGEND-PROFILE	PROPOSED
200 WM	WATERMAIN	200 WM	SL	HYDRO	150 WM	WATERMAIN	150 WM	
525 LDS	LAND DRAINAGE SEWER	525 LDS	MTS	TRAFFIC SIGNALS	300 LDS	HYDRANT	300 LDS	
375 WWS	WASTEWATER SEWER	375 WWS	50 GAS	GAS	250 WWS	VALVE	250 WWS	
○	MANHOLE	●	50 GAS	SURVEY BAR	○	PROFILE	○	
□	CATCH BASIN	■	50 GAS	FENCE	○	PROFILE	○	
▽	CURB INLET	▲	50 GAS	POLE - HYDRO, MTS	○	PROFILE	○	
▽	REDUCER	▽	50 GAS	CURB STOP	○	PROFILE	○	
▽	REDUCER	▽	50 GAS	GUY ANCHOR	○	PROFILE	○	
X	COUPLER	X	50 GAS	LIGHT STANDARD	○	PROFILE	○	
○	ANODE	○	50 GAS	TREE	○	PROFILE	○	

LOCATION APPROVED UNDERGROUND STRUCTURES

SUPV. U/G STRUCTURES COMMITTEE DATE

NOTE:
 LOCATION OF UNDERGROUND STRUCTURES AS SHOWN ARE BASED ON THE BEST INFORMATION AVAILABLE BUT NO GUARANTEE IS GIVEN THAT ALL EXISTING UTILITIES ARE SHOWN OR THAT THE GIVEN LOCATIONS ARE EXACT. CONFIRMATION OF EXISTENCE AND EXACT LOCATION OF ALL SERVICES MUST BE OBTAINED FROM THE INDIVIDUAL UTILITIES BEFORE PROCEEDING WITH CONSTRUCTION.

CITY OF WINNIPEG WATER AND WASTE ENGINEERING DIVISION

DESIGNED BY DB CHECKED BY NC
 DRAWN BY C/JH APPROVED BY KZ

HOR. SCALE 1:250
 VERTICAL SCALE 1:50

RELEASED FOR CONSTRUCTION
 DATE 2009 03 10

ENGINEER'S SEAL
 ORIGINAL SIGNED BY K.R. ZUREK
 09/03/10

THE CITY OF WINNIPEG WATER AND WASTE DEPARTMENT

2009 WATERMAIN RENEWALS CONTRACT 3
ST MATTHEWS AVENUE
 262.50 W OF STRATHCONA STREET TO 112.50 W OF STRATHCONA STREET

SHEET 9 OF 10
 CITY DRAWING NUMBER D-11715