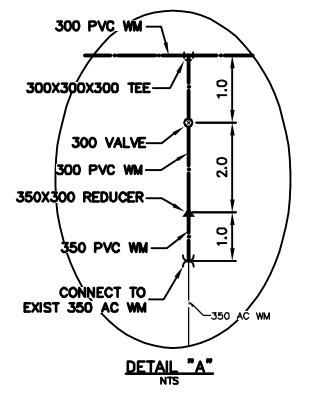
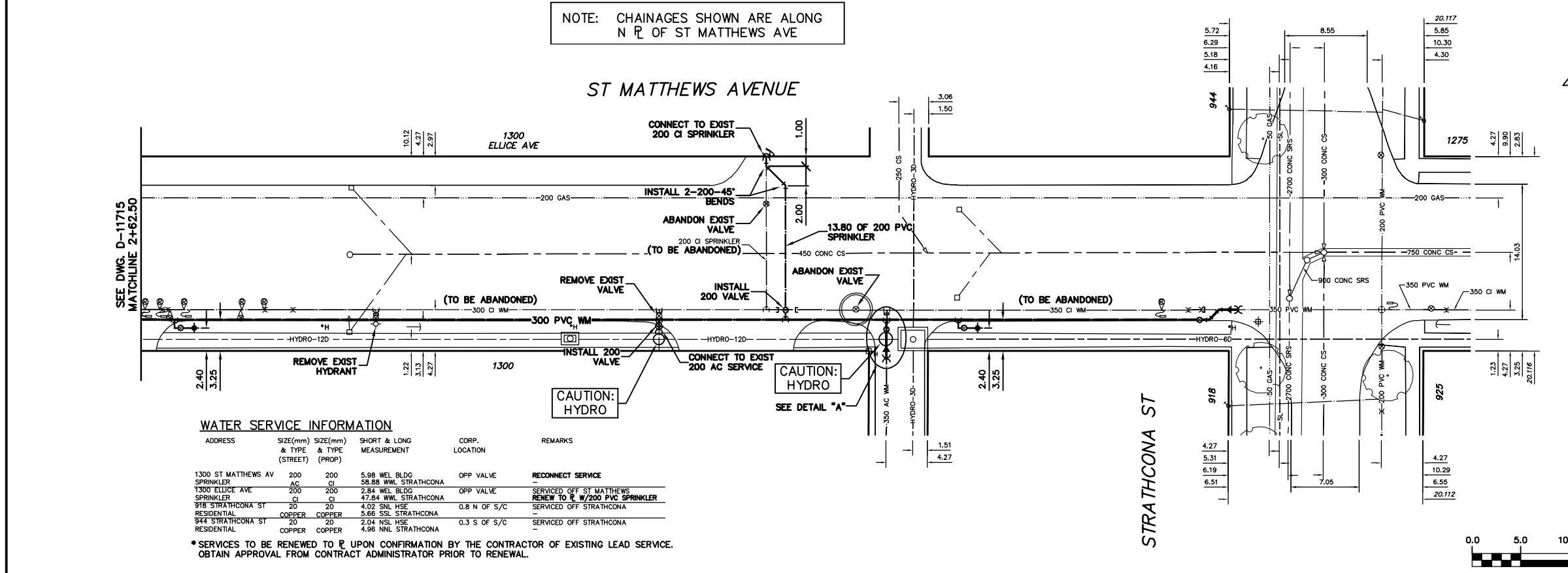


- CONSTRUCTION NOTES**
1. EXPOSE EXISTING WATERMAIN & CONFIRM INVERTS PRIOR TO CONSTRUCTION.
  2. LOCATION OF ALL SERVICES TO BE CONFIRMED IN THE FIELD.
  3. INSTALL WATERMAIN BY TRENCHLESS METHODS.
  4. TRENCHES AND EXCAVATIONS WITHIN 1 METRE OF A PAVED AREA INCLUDING SIDEWALKS SHALL BE CLASS 3 BACKFILL.
  5. ALL MATERIALS SHALL CONFORM TO THE CITY OF WINNIPEG STANDARD CONSTRUCTION SPECIFICATIONS.
  6. MINIMUM COVER TO TOP OF WATERMAIN SHALL BE 2.4 m.
  7. REPLACE ALL EXISTING LEAD SERVICES FROM PROPOSED WATERMAIN TO E.
  8. NOTIFY ALL AFFECTED RESIDENTS AND BUSINESSES 24 HOURS IN ADVANCE OF ANY WATER SHUTDOWNS OR DISRUPTION OF SERVICE.

NOTE: CHAINAGES SHOWN ARE ALONG N R OF ST MATTHEWS AVE



**WATER SERVICE INFORMATION**

ADDRESS	SIZE(mm)	SIZE(mm)	SHORT & LONG MEASUREMENT	CORP. LOCATION	REMARKS
1300 ST MATTHEWS AV	200	200	5.98 WEL BLDG	OPP VALVE	RECONNECT SERVICE
SPRINKLER	AC	CI	58.88 WEL STRATHCONA	OPP VALVE	SERVICED OFF ST MATTHEWS
1300 ELLICE AVE	200	200	2.84 WEL BLDG	OPP VALVE	RENEW TO R W/200 PVC SPRINKLER
SPRINKLER	CI	CI	47.84 WEL STRATHCONA	OPP VALVE	SERVICED OFF STRATHCONA
918 STRATHCONA ST	20	20	4.02 SNL HSE	0.8 N OF S/C	SERVICED OFF STRATHCONA
RESIDENTIAL	COPPER	COPPER	5.66 SSL STRATHCONA	0.3 S OF S/C	SERVICED OFF STRATHCONA
944 STRATHCONA ST	20	20	2.04 NSL HSE	0.3 S OF S/C	SERVICED OFF STRATHCONA
RESIDENTIAL	COPPER	COPPER	4.96 NNL STRATHCONA	0.3 S OF S/C	SERVICED OFF STRATHCONA

\* SERVICES TO BE RENEWED TO R UPON CONFIRMATION BY THE CONTRACTOR OF EXISTING LEAD SERVICE. OBTAIN APPROVAL FROM CONTRACT ADMINISTRATOR PRIOR TO RENEWAL.

**METRIC**  
WHOLE NUMBERS INDICATE MILLIMETRES  
DECIMALIZED NUMBERS INDICATE METRES

NOTE: ALL VALVES TO BE INSTALLED COUNTERCLOCKWISE TO CLOSE

**WARNING**

IF POWER EQUIPMENT OR EXPLOSIVES ARE TO BE USED FOR EXCAVATION ON THIS PROJECT THE CONTRACTOR MUST:

- 1) NOTIFY THE GAS COMPANY OF THE PROPOSED LOCATION OF EXCAVATION.
- 2) TAKE PRECAUTION TO AVOID DAMAGE TO GAS COMPANY INSTALLATIONS.

SEE PROVINCIAL REGULATION 210/72 FOR DETAILS

200 WM	WATERMAIN	200 WM	SL, HYDRO	150 WM	WATERMAIN	150 WM
+	HYDRANT	+	MTS	+	HYDRANT	+
⊙	VALVE	⊙	TRAFFIC SIGNALS	+	VALVE	+
525 LDS	LAND DRAINAGE SEWER	525 LDS	GAS	300 LDS	LAND DRAINAGE SEWER	300 LDS
375 WWS	WASTEWATER SEWER	375 WWS	SURVEY BAR	250 WWS	WASTEWATER SEWER	250 WWS
○	MANHOLE	●	FENCE	⊕	PROFILE	⊕
□	CATCH BASIN	■	POLE - HYDRO, MTS	⊕	GROUND ABOVE PIPE	⊕
▽	CURB INLET	▽	CURB STOP	⊕	⊕ DITCH (NORTH & WEST)	⊕
∇	REDUCER	∇	GUY ANCHOR	⊕	⊕ DITCH (SOUTH & EAST)	⊕
X	COUPLER	X	LIGHT STANDARD	⊕	GUTTER (NORTH & WEST)	⊕
⊕	ANODE	⊕	TREE	⊕	GUTTER (SOUTH & EAST)	⊕
EXISTING	LEGEND-PLAN	PROPOSED	EXISTING	LEGEND-PLAN	PROPOSED	EXISTING
				LEGEND-PROFILE		

**LOCATION APPROVED**

UNDERGROUND STRUCTURES

SUPV. U/G STRUCTURES COMMITTEE DATE

NOTE: LOCATION OF UNDERGROUND STRUCTURES AS SHOWN ARE BASED ON THE BEST INFORMATION AVAILABLE BUT NO GUARANTEE IS GIVEN THAT ALL EXISTING UTILITIES ARE SHOWN OR THAT THE GIVEN LOCATIONS ARE EXACT. CONFIRMATION OF EXISTENCE AND EXACT LOCATION OF ALL SERVICES MUST BE OBTAINED FROM THE INDIVIDUAL UTILITIES BEFORE PROCEEDING WITH CONSTRUCTION.

NO.	REVISIONS	DATE	BY

**CITY OF WINNIPEG**  
WATER AND WASTE  
ENGINEERING DIVISION

DESIGNED BY: DB  
CHECKED BY: NC

DRAWN BY: C/JH  
APPROVED BY: KZ

HOR. SCALE: 1:250  
VERTICAL: 1:50

RELEASED FOR CONSTRUCTION

DATE: 2009 03 10

ENGINEER'S SEAL

ORIGINAL SIGNED BY K.R. ZUREK 09/03/10

BID OPPORTUNITY 1B1-2009  
FILENAME: D-11716.dwg  
PLOT DATE: 2009 03 10

**THE CITY OF WINNIPEG**  
WATER AND WASTE DEPARTMENT

2009 WATERMAIN RENEWALS  
CONTRACT 3  
ST MATTHEWS AVENUE  
112.50 W OF STRATHCONA STREET TO STRATHCONA STREET

SHEET 10 OF 10  
CITY DRAWING NUMBER  
D-11716