

**PRELIMINARY  
NOT FOR CONSTRUCTION**

**NOTE:**  
 LOCATION OF UNDERGROUND STRUCTURES AS SHOWN ARE BASED ON THE BEST INFORMATION AVAILABLE BUT NO GUARANTEE IS GIVEN THAT ALL EXISTING UTILITIES ARE SHOWN OR THAT THE GIVEN LOCATIONS ARE EXACT. CONFIRMATION OF EXISTENCE AND EXACT LOCATION OF ALL SERVICES MUST BE OBTAINED FROM THE INDIVIDUAL UTILITIES BEFORE PROCEEDING WITH CONSTRUCTION.

Manager Parks and Open Space Division  
 Released For Construction Date

DO NOT SCALE DRAWINGS

5		
4		
3		
2		
1		
0	Released for Tender	02-04-09
revisions	description	date

project title

**LONDON REAY PARK**  
 60 REAY CRESCENT  
 WINNIPEG, MANITOBA

approved by

designed by LLW scale As Shown

drawn by LLW date 12 03 2009

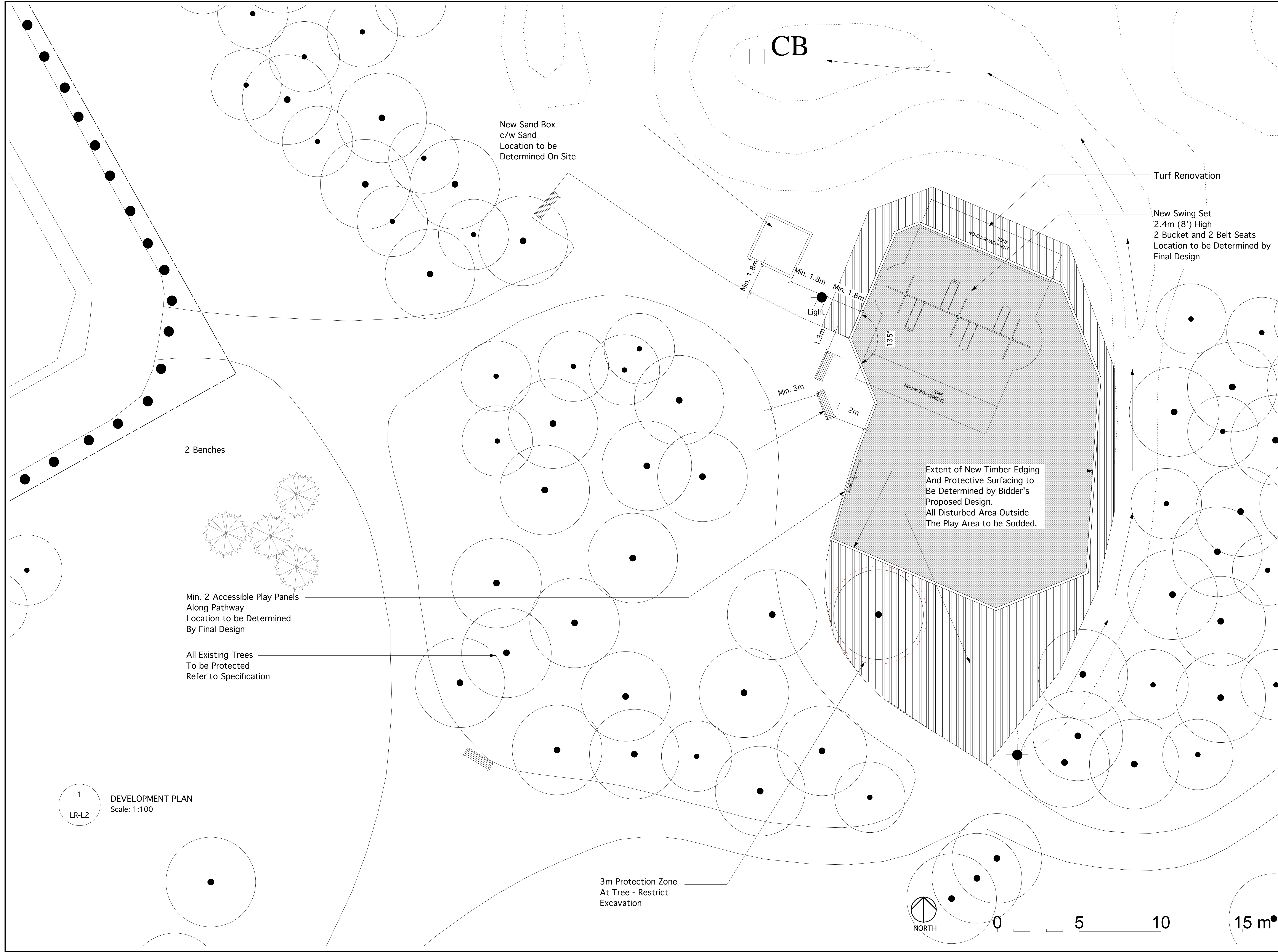
Client



drawing title

DEVELOPMENT PLAN

project no.	sheet	revision no.
0902	LR-L2	0



CB

New Sand Box  
 c/w Sand  
 Location to be  
 Determined On Site

Turf Renovation

New Swing Set  
 2.4m (8') High  
 2 Bucket and 2 Belt Seats  
 Location to be Determined by  
 Final Design

Extent of New Timber Edging  
 And Protective Surfacing to  
 Be Determined by Bidder's  
 Proposed Design.  
 All Disturbed Area Outside  
 The Play Area to be Sodded.

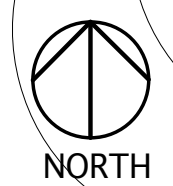
2 Benches

Min. 2 Accessible Play Panels  
 Along Pathway  
 Location to be Determined  
 By Final Design

All Existing Trees  
 To be Protected  
 Refer to Specification

3m Protection Zone  
 At Tree - Restrict  
 Excavation

1 DEVELOPMENT PLAN  
 LR-L2 Scale: 1:100



0 5 10 15 m