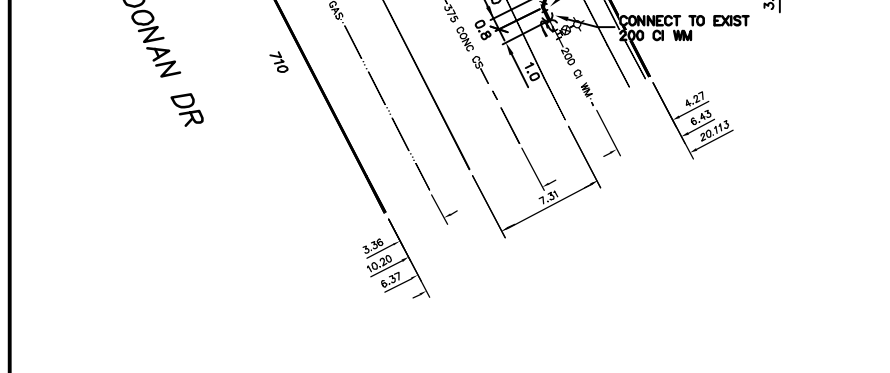
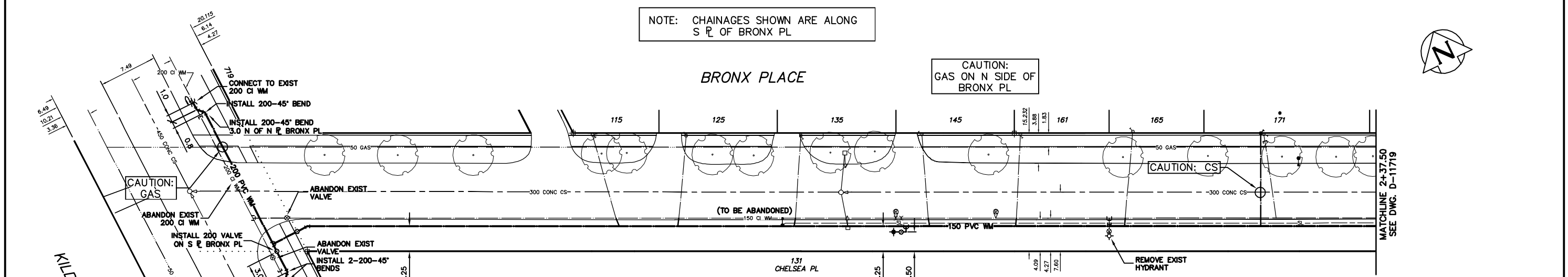


NOTE: CHAINAGES SHOWN ARE ALONG S R. OF BRONX PL



**WATER SERVICE INFORMATION**

ADDRESS	SIZE(mm) & TYPE (STREET)	SIZE(mm) & TYPE (PROP)	SHORT & LONG MEASUREMENT	CORP. LOCATION	REMARKS
115 BRONX PL RESIDENTIAL	20 COPPER	20 COPPER	2.52 EWL HSE	3.0 E OF S/C	RECONNECT SERVICE
125 BRONX PL RESIDENTIAL	20 COPPER	20 COPPER	44.39 EEL KILDONAN	0.9 W OF S/C	RECONNECT SERVICE
135 BRONX PL RESIDENTIAL	20 COPPER	20 COPPER	0.45 EWL HSE	0.9 W OF S/C	RECONNECT SERVICE
145 BRONX PL RESIDENTIAL	20 COPPER	20 COPPER	56.38 EEL KILDONAN	0.7 W OF S/C	RECONNECT SERVICE
155 BRONX PL RESIDENTIAL	20 COPPER	20 COPPER	0.40 EWL HSE	0.8 E OF S/C	RECONNECT SERVICE
161 BRONX PL RESIDENTIAL	20 COPPER	20 COPPER	71.33 EEL KILDONAN	0.6 W OF S/C	RECONNECT SERVICE
165 BRONX PL RESIDENTIAL	20 COPPER	20 COPPER	0.41 EWL HSE	0.6 W OF S/C	RECONNECT SERVICE
171 BRONX PL RESIDENTIAL	20 COPPER	20 COPPER	86.82 EEL KILDONAN	1.0 W OF S/C	RECONNECT SERVICE
710 KILDONEN DR PARK	16 LEAD	20 COPPER	1.58 WWL HSE	1.6 E OF S/C	RENEW TO R W/20 COPPER
717 KILDONEN DR RESIDENTIAL	18 LEAD	20 COPPER	2.90 EWL HSE	1.6 E OF S/C	RENEW TO R W/20 COPPER
719 KILDONEN DR PARK	-	-	-	-	NO SERVICE INFORMATION
131 CHELSEA PL RESIDENTIAL	-	-	1.35 SNL HSE	0.9 S OF S/C	SERV. OFF KILDONEN
12.83 NNL BRONX	-	-	-	-	-

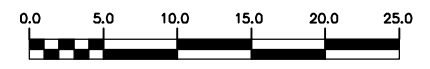
\* SERVICES TO BE RENEWED TO R UPON CONFIRMATION BY THE CONTRACTOR OF EXISTING LEAD SERVICE. OBTAIN APPROVAL FROM CONTRACT ADMINISTRATOR PRIOR TO RENEWAL.

- CONSTRUCTION NOTES**
- EXPOSE EXISTING WATERMAIN & CONFIRM INVERTS PRIOR TO CONSTRUCTION.
  - CONFIRM LOCATION OF ALL SERVICES IN THE FIELD.
  - INSTALL WATERMAIN BY TRENCHLESS METHODS.
  - TRENCHES AND EXCAVATIONS WITHIN 1 METRE OF A PAVED AREA INCLUDING SIDEWALKS SHALL BE CLASS 3 BACKFILL.
  - ALL MATERIALS SHALL CONFORM TO THE CITY OF WINNIPEG STANDARD CONSTRUCTION SPECIFICATIONS.
  - MINIMUM COVER TO TOP OF WATERMAIN SHALL BE 2.4 m.
  - REPLACE ALL EXISTING LEAD SERVICES FROM PROPOSED WATERMAIN TO E.
  - NOTIFY ALL AFFECTED RESIDENTS AND BUSINESSES 24 HOURS IN ADVANCE OF ANY WATER SHUTDOWNS OR DISRUPTION OF SERVICE.

CAUTION: SL ON S SIDE OF BRONX PL

**METRIC**  
WHOLE NUMBERS INDICATE MILLIMETRES  
DECIMALIZED NUMBERS INDICATE METRES

**WARNING**  
IF POWER EQUIPMENT OR EXPLOSIVES ARE TO BE USED FOR EXCAVATION ON THIS PROJECT THE CONTRACTOR MUST:  
1) NOTIFY THE GAS COMPANY OF THE PROPOSED LOCATION OF EXCAVATION.  
2) TAKE PRECAUTION TO AVOID DAMAGE TO GAS COMPANY INSTALLATIONS.  
SEE PROVINCIAL REGULATION 210/72 FOR DETAILS



LEGEND-PLAN	LEGEND-PROFILE	LEGEND-PLAN	LEGEND-PROFILE
200 WM	200 WM	150 WM	150 WM
HYDRANT	HYDRANT	HYDRANT	HYDRANT
VALVE	VALVE	VALVE	VALVE
525 LDS LAND DRAINAGE SEWER	525 LDS LAND DRAINAGE SEWER	50 GAS	50 GAS
375 WWS WASTEWATER SEWER	375 WWS WASTEWATER SEWER	300 LDS LAND DRAINAGE SEWER	300 LDS LAND DRAINAGE SEWER
MANHOLE	MANHOLE	250 WWS WASTEWATER SEWER	250 WWS WASTEWATER SEWER
CATCH BASIN	CATCH BASIN	PROFILE	PROFILE
CURB INLET	CURB INLET	GROUND ABOVE PIPE	GROUND ABOVE PIPE
REDUCER	REDUCER	☉ DITCH (NORTH & WEST)	☉ DITCH (NORTH & WEST)
COUPLER	COUPLER	☉ DITCH (SOUTH & EAST)	☉ DITCH (SOUTH & EAST)
ANODE	ANODE	☉ GUTTER (NORTH & WEST)	☉ GUTTER (NORTH & WEST)
		☉ GUTTER (SOUTH & EAST)	☉ GUTTER (SOUTH & EAST)

**LOCATION APPROVED UNDERGROUND STRUCTURES**

SUPV. U/G STRUCTURES COMMITTEE	DATE

NOTE:  
LOCATION OF UNDERGROUND STRUCTURES AS SHOWN ARE BASED ON THE BEST INFORMATION AVAILABLE BUT NO GUARANTEE IS GIVEN THAT ALL EXISTING UTILITIES ARE SHOWN OR THAT THE GIVEN LOCATIONS ARE EXACT. CONFIRMATION OF EXISTENCE AND EXACT LOCATION OF ALL SERVICES MUST BE OBTAINED FROM THE INDIVIDUAL UTILITIES BEFORE PROCEEDING WITH CONSTRUCTION.

**CITY OF WINNIPEG WATER AND WASTE ENGINEERING DIVISION**

DESIGNED BY: NC	CHECKED BY: NC
DRAWN BY: C/JH	APPROVED BY: KZ
HOR. SCALE: 1:250	RELEASED FOR CONSTRUCTION
VERTICAL SCALE: 1:50	
DATE: 2009 03 12	DATE:

ENGINEER'S SEAL  
ORIGINAL SIGNED BY K.R. ZUREK 09/03/12

**THE CITY OF WINNIPEG WATER AND WASTE DEPARTMENT**

2009 WATERMAIN RENEWALS CONTRACT 4  
**BRONX PLACE**  
KILDONEN DRIVE TO 137.50 E OF KILDONEN DRIVE

SHEET 1 OF 10  
CITY DRAWING NUMBER D-11718