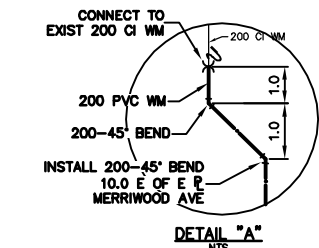
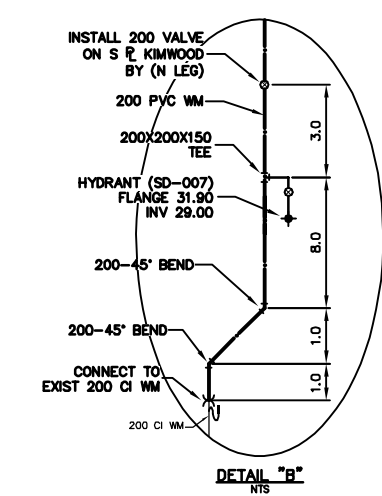
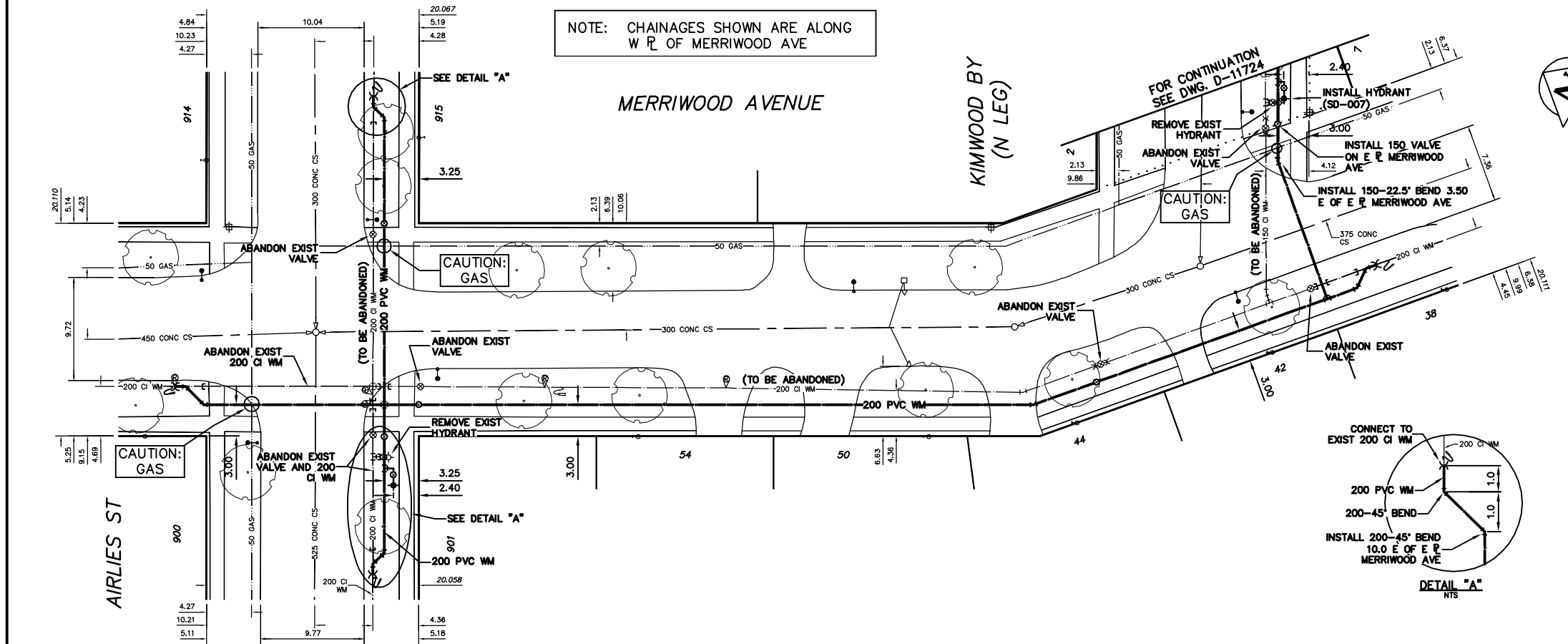


WATER SERVICE INFORMATION					
ADDRESS	SIZE(mm) & TYPE (STREET)	SIZE(mm) & TYPE (PROP)	SHORT & LONG MEASUREMENT	CORP. LOCATION	REMARKS
2 KIMWOOD BY RESIDENTIAL	-	-	-	-	-
6 KIMWOOD BY RESIDENTIAL	-	-	-	-	-
7 KIMWOOD BY RESIDENTIAL	-	-	-	-	-
10 KIMWOOD BY RESIDENTIAL	-	-	4.42 EWL HSE	-	-
11 KIMWOOD BY RESIDENTIAL	-	-	38.30 EEL MERRIWOOD	-	-
14 KIMWOOD BY RESIDENTIAL	-	-	2.85 EWL HSE	-	-
15 KIMWOOD BY RESIDENTIAL	-	-	42.82 EEL MERRIWOOD	-	-
18 KIMWOOD BY RESIDENTIAL	-	-	5.84 WEL HSE	-	-
19 KIMWOOD BY RESIDENTIAL	-	-	56.89 EEL MERRIWOOD	-	-
22 KIMWOOD BY RESIDENTIAL	-	-	6.29 WEL HSE	-	-
26 KIMWOOD BY RESIDENTIAL	-	-	62.62 EEL MERRIWOOD	-	-
28 KIMWOOD BY RESIDENTIAL	-	-	3.26 EWL HSE	-	-
30 KIMWOOD BY RESIDENTIAL	-	-	70.96 EEL MERRIWOOD	-	-
34 KIMWOOD BY RESIDENTIAL	-	-	2.85 EWL HSE	-	-
38 KIMWOOD BY RESIDENTIAL	-	-	79.98 EEL MERRIWOOD	-	-
43 KIMWOOD BY RESIDENTIAL	-	-	3.65 EWL HSE	-	-
44 KIMWOOD BY RESIDENTIAL	-	-	87.91 EEL MERRIWOOD	-	-
47 KIMWOOD BY RESIDENTIAL	-	-	3.41 EWL HSE	-	-
50 KIMWOOD BY RESIDENTIAL	-	-	104.24 EEL MERRIWOOD	-	-
54 KIMWOOD BY RESIDENTIAL	-	-	3.65 EWL HSE	-	-
58 KIMWOOD BY RESIDENTIAL	-	-	5.10 EEL KIMWOOD (E LEG)	-	-
63 KIMWOOD BY RESIDENTIAL	-	-	7.41 WEL HSE	-	-
68 KIMWOOD BY RESIDENTIAL	-	-	17.43 EEL KIMWOOD (E LEG)	-	-
73 KIMWOOD BY RESIDENTIAL	-	-	6.63 SSL KIMWOOD (N LEG)	-	-
78 KIMWOOD BY RESIDENTIAL	-	-	4.13 EWL HSE	-	-
83 KIMWOOD BY RESIDENTIAL	-	-	13.33 WEL KIMWOOD (E LEG)	-	-
88 KIMWOOD BY RESIDENTIAL	-	-	9.25 SNL HSE	-	-
93 KIMWOOD BY RESIDENTIAL	-	-	13.85 SSL KIMWOOD (N LEG)	-	-
98 KIMWOOD BY RESIDENTIAL	-	-	5.61 NSL HSE	-	-
103 KIMWOOD BY RESIDENTIAL	-	-	3.81 NSL KIMWOOD (N LEG)	-	-
108 KIMWOOD BY RESIDENTIAL	-	-	6.35 SNL HSE	-	-
113 KIMWOOD BY RESIDENTIAL	-	-	1.92>NNL KIMWOOD (N LEG)	-	-
118 KIMWOOD BY RESIDENTIAL	-	-	4.12 NSL HSE	-	-
123 KIMWOOD BY RESIDENTIAL	-	-	48.24 SSL AIRLIES	-	-
128 KIMWOOD BY RESIDENTIAL	-	-	2.57 SNL HSE	-	-
133 KIMWOOD BY RESIDENTIAL	-	-	20.68 SSL AIRLIES	-	-
138 KIMWOOD BY RESIDENTIAL	-	-	1.81 NSL HSE	-	-
143 KIMWOOD BY RESIDENTIAL	-	-	5.76>NNL AIRLIES	-	SERV. OF MERRIWOOD
148 KIMWOOD BY RESIDENTIAL	-	-	20	-	-
153 KIMWOOD BY RESIDENTIAL	-	-	7.07 WEL HSE	-	-
158 KIMWOOD BY RESIDENTIAL	-	-	COPPER	-	-
163 KIMWOOD BY RESIDENTIAL	-	-	20	-	-
168 KIMWOOD BY RESIDENTIAL	-	-	2.12 EWL HSE	-	-
173 KIMWOOD BY RESIDENTIAL	-	-	COPPER	-	-
178 KIMWOOD BY RESIDENTIAL	-	-	6.01 EEL MERRIWOOD	-	-
183 KIMWOOD BY RESIDENTIAL	-	-	20	-	-
188 KIMWOOD BY RESIDENTIAL	-	-	4.13 WEL HSE	-	-
193 KIMWOOD BY RESIDENTIAL	-	-	COPPER	-	-
198 KIMWOOD BY RESIDENTIAL	-	-	8.12 EEL MERRIWOOD	-	-

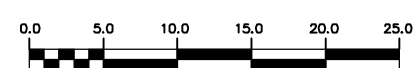
\* SERVICES TO BE RENEWED TO R UPON CONFIRMATION BY THE CONTRACTOR OF EXISTING LEAD SERVICE. OBTAIN APPROVAL FROM CONTRACT ADMINISTRATOR PRIOR TO RENEWAL.

- CONSTRUCTION NOTES**
1. EXPOSE EXISTING WATERMAIN & CONFIRM INVERTS PRIOR TO CONSTRUCTION.
  2. LOCATION OF ALL SERVICES TO BE CONFIRMED IN THE FIELD.
  3. INSTALL WATERMAIN BY TRENCHLESS METHODS.
  4. TRENCHES AND EXCAVATIONS WITHIN 1 METRE OF A PAVED AREA INCLUDING SIDEWALKS SHALL BE CLASS 3 BACKFILL.
  5. ALL MATERIALS SHALL CONFORM TO THE CITY OF WINNIPEG STANDARD CONSTRUCTION SPECIFICATIONS.
  6. MINIMUM COVER TO TOP OF WATERMAIN SHALL BE 2.4 m.
  7. REPLACE ALL EXISTING LEAD SERVICES FROM PROPOSED WATERMAIN TO E.
  8. NOTIFY ALL AFFECTED RESIDENTS AND BUSINESSES 24 HOURS IN ADVANCE OF ANY WATER SHUTDOWNS OR DISRUPTION OF SERVICE.



**METRIC**  
WHOLE NUMBERS INDICATE MILLIMETRES  
DECIMALIZED NUMBERS INDICATE METRES

NOTE: ALL VALVES TO BE INSTALLED COUNTERCLOCKWISE TO CLOSE



**WARNING**  
IF POWER EQUIPMENT OR EXPLOSIVES ARE TO BE USED FOR EXCAVATION ON THIS PROJECT THE CONTRACTOR MUST:  
1) NOTIFY THE GAS COMPANY OF THE PROPOSED LOCATION OF EXCAVATION.  
2) TAKE PRECAUTION TO AVOID DAMAGE TO GAS COMPANY INSTALLATIONS.  
SEE PROVINCIAL REGULATION 210/72 FOR DETAILS

200 WM	WATERMAIN	200 WM	SL - HYDRO	150 WM	WATERMAIN	150 WM
+	HYDRANT	+	MTS	+	HYDRANT	+
o	VALVE	o	TRAFFIC SIGNALS	o	VALVE	o
525 LDS	LAND DRAINAGE SEWER	525 LDS	GAS	50 GAS	300 LDS	LAND DRAINAGE SEWER
375 WWS	WASTEWATER SEWER	375 WWS	SURVEY BAR	250 WWS	250 WWS	WASTEWATER SEWER
o	MANHOLE	o	FENCE	o	o	PROFILE
□	CATCH BASIN	□	POLE - HYDRO, MTS	□	□	GROUND ABOVE PIPE
▽	CURB INLET	▽	CURB STOP	▽	▽	E DITCH (NORTH & WEST)
△	REDUCER	△	GUY ANCHOR	△	△	E DITCH (SOUTH & EAST)
X	COUPLER	X	LIGHT STANDARD	X	X	GUTTER (NORTH & EAST)
o	ANODE	o	TREE	o	o	GUTTER (SOUTH & EAST)
EXISTING	LEGEND-PLAN	PROPOSED	EXISTING	LEGEND-PLAN	PROPOSED	EXISTING
EXISTING	LEGEND-PROFILE	PROPOSED	EXISTING	LEGEND-PROFILE	PROPOSED	EXISTING

LOCATION APPROVED UNDERGROUND STRUCTURES	
SUPV. U/G STRUCTURES COMMITTEE	DATE
NOTE: LOCATION OF UNDERGROUND STRUCTURES AS SHOWN ARE BASED ON THE BEST INFORMATION AVAILABLE BUT NO GUARANTEE IS GIVEN THAT ALL EXISTING UTILITIES ARE SHOWN OR THAT THE GIVEN LOCATIONS ARE EXACT. CONFIRMATION OF EXISTENCE AND EXACT LOCATION OF ALL SERVICES MUST BE OBTAINED FROM THE INDIVIDUAL UTILITIES BEFORE PROCEEDING WITH CONSTRUCTION.	
B.M. ELEV.	FIELD BOOK #:
POSTED TO LBS	
NO. REVISIONS	DATE BY

**CITY OF WINNIPEG WATER AND WASTE ENGINEERING DIVISION**

DESIGNED BY: DB  
CHECKED BY: NC  
DRAWN BY: C/JH  
APPROVED BY: KZ  
HOR. SCALE: 1:250  
VERTICAL SCALE: 1:50  
DATE: 2009 03 12

ENGINEER'S SEAL  
ORIGINAL SIGNED BY K.R. ZUREK  
09/03/12

**THE CITY OF WINNIPEG WATER AND WASTE DEPARTMENT**

2009 WATERMAIN RENEWALS CONTRACT 4  
MERRIWOOD AVENUE AIRLIES STREET TO KIMWOOD BAY (N LEG)

SHEET 8 OF 10  
CITY DRAWING NUMBER D-11725