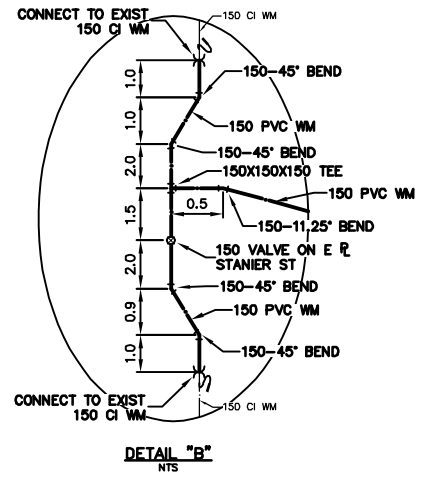
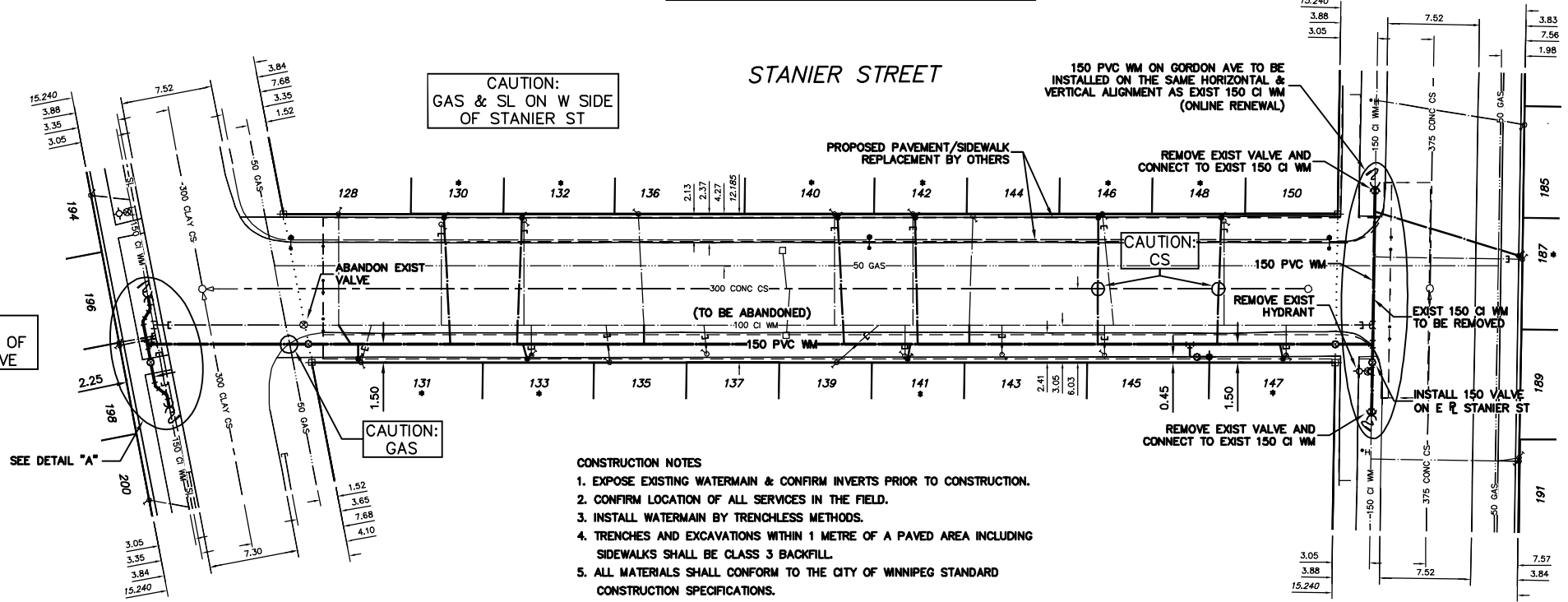


ADDRESS	SIZE(mm) & TYPE (STREET)	SIZE(mm) (PROP)	SHORT & LONG MEASUREMENT	CORP. LOCATION	REMARKS
128 STANIER ST	20 COPPER	20 COPPER	4.23 SNL HSE	OPP S/C	RECONNECT SERVICE
130 STANIER ST	20 RESIDENTIAL	12 COPPER	4.57 NNL DEARBORN	OPP S/C	RENEW W/ 20 COPPER
131 STANIER ST	20 RESIDENTIAL	12 LEAD	12.89 NNL DEARBORN	OPP S/C	RENEW W/ 20 COPPER
132 STANIER ST	20 RESIDENTIAL	12 LEAD	0.60 NNL DEARBORN	0.8 N OF S/C	RENEW W/ 20 COPPER
133 STANIER ST	20 RESIDENTIAL	12 LEAD	4.05 NNL DEARBORN	OPP S/C	RENEW W/ 20 COPPER
134 STANIER ST	20 RESIDENTIAL	12 LEAD	0.70 NNL HSE	OPP S/C	RENEW W/ 20 COPPER
135 STANIER ST	20 RESIDENTIAL	20 LEAD	19.80 NNL DEARBORN	OPP S/C	RENEW W/ 20 COPPER
136 STANIER ST	20 RESIDENTIAL	20 LEAD	2.76 NNL HSE	OPP S/C	RECONNECT SERVICE
137 STANIER ST	20 RESIDENTIAL	20 LEAD	18.08 NNL DEARBORN	0.2 S OF S/C	RECONNECT SERVICE
138 STANIER ST	20 RESIDENTIAL	20 COPPER	24.41 NNL DEARBORN	OPP S/C	RECONNECT SERVICE
139 STANIER ST	20 RESIDENTIAL	20 COPPER	45.25 NNL DEARBORN	0.5 N OF S/C	RECONNECT SERVICE
140 STANIER ST	20 RESIDENTIAL	20 COPPER	28.14 NNL DEARBORN	OPP S/C	RECONNECT SERVICE
141 STANIER ST	20 RESIDENTIAL	20 COPPER	0.80 NNL HSE	0.3 S OF S/C	RECONNECT SERVICE
142 STANIER ST	20 RESIDENTIAL	20 COPPER	32.42 NNL DEARBORN	OPP S/C	RECONNECT SERVICE
143 STANIER ST	20 RESIDENTIAL	20 LEAD	2.06 SNL HSE	3.4 N OF S/C	RECONNECT SERVICE
144 STANIER ST	20 RESIDENTIAL	12 LEAD	2.36 SNL HSE	OPP S/C	RENEW W/ 20 COPPER
145 STANIER ST	20 RESIDENTIAL	12 LEAD	45.25 NNL DEARBORN	OPP S/C	RENEW W/ 20 COPPER
146 STANIER ST	20 RESIDENTIAL	12 LEAD	2.08 NNL HSE	OPP S/C	RENEW W/ 20 COPPER
147 STANIER ST	20 RESIDENTIAL	12 LEAD	48.79 NNL DEARBORN	OPP S/C	RENEW W/ 20 COPPER
148 STANIER ST	20 RESIDENTIAL	12 LEAD	51.64 NNL DEARBORN	OPP S/C	RENEW W/ 20 COPPER
149 STANIER ST	20 RESIDENTIAL	12 LEAD	2.19 NNL HSE	OPP S/C	RENEW W/ 20 COPPER
150 STANIER ST	20 RESIDENTIAL	12 LEAD	27.36 SSL GORDON	OPP S/C	RECONNECT SERVICE
151 STANIER ST	20 RESIDENTIAL	20 COPPER	1.12 SSL HSE	OPP S/C	RECONNECT SERVICE
152 STANIER ST	20 RESIDENTIAL	20 COPPER	29.98 SSL GORDON	0.3 S OF S/C	RECONNECT SERVICE
153 STANIER ST	20 RESIDENTIAL	12 COPPER	0.74 SSL HSE	OPP S/C	RECONNECT SERVICE
154 STANIER ST	20 RESIDENTIAL	12 COPPER	18.93 SSL GORDON	OPP S/C	RECONNECT SERVICE
155 STANIER ST	20 RESIDENTIAL	12 LEAD	2.03 NNL HSE	0.9 N OF S/C	RENEW W/ 20 COPPER
156 STANIER ST	20 RESIDENTIAL	12 LEAD	19.26 SSL GORDON	OPP S/C	RENEW W/ 20 COPPER
157 STANIER ST	20 RESIDENTIAL	12 LEAD	3.44 SNL HSE	OPP S/C	RENEW W/ 20 COPPER
158 STANIER ST	20 RESIDENTIAL	12 LEAD	4.03 SSL GORDON	OPP S/C	RENEW W/ 20 COPPER
159 STANIER ST	20 RESIDENTIAL	12 LEAD	0.40 SNL HSE	OPP S/C	RENEW W/ 20 COPPER
160 STANIER ST	20 RESIDENTIAL	12 LEAD	9.34 SSL GORDON	OPP S/C	RECONNECT SERVICE
161 STANIER ST	20 RESIDENTIAL	20 COPPER	3.66 EWL HSE	OPP S/C	SERV. OFF GORDON
162 STANIER ST	20 RESIDENTIAL	20 COPPER	15.22 WWL STANIER	OPP S/C	SERV. OFF GORDON
163 STANIER ST	20 RESIDENTIAL	12 COPPER	1.14 EWL HSE	0.2 W OF S/C	RECONNECT SERVICE
164 STANIER ST	20 RESIDENTIAL	12 LEAD	8.46 WEL STANIER	OPP S/C	RENEW W/ 20 COPPER
165 STANIER ST	20 RESIDENTIAL	12 LEAD	0.30 EEL HSE	OPP S/C	SERV. OFF DEARBORN
166 STANIER ST	20 RESIDENTIAL	12 COPPER	1.62 WEL STANIER	OPP S/C	RECONNECT SERVICE
167 STANIER ST	20 RESIDENTIAL	12 COPPER	0.56 WWL HSE	OPP S/C	SERV. OFF DEARBORN
168 STANIER ST	20 RESIDENTIAL	12 COPPER	1.36 WEL STANIER	OPP S/C	RECONNECT SERVICE

* SERVICES TO BE RENEWED TO R UPON CONFIRMATION BY THE CONTRACTOR OF EXISTING LEAD SERVICE. OBTAIN APPROVAL FROM CONTRACT ADMINISTRATOR PRIOR TO RENEWAL.

NOTE: CHAINAGES SHOWN ARE ALONG E R OF STANIER ST

DEARBORN AVE



CAUTION: GAS ON N SIDE OF GORDON AVE

- CONSTRUCTION NOTES**
1. EXPOSE EXISTING WATERMAIN & CONFIRM INVERTS PRIOR TO CONSTRUCTION.
 2. CONFIRM LOCATION OF ALL SERVICES IN THE FIELD.
 3. INSTALL WATERMAIN BY TRENCHLESS METHODS.
 4. TRENCHES AND EXCAVATIONS WITHIN 1 METRE OF A PAVED AREA INCLUDING SIDEWALKS SHALL BE CLASS 3 BACKFILL.
 5. ALL MATERIALS SHALL CONFORM TO THE CITY OF WINNIPEG STANDARD CONSTRUCTION SPECIFICATIONS.
 6. MINIMUM COVER TO TOP OF WATERMAIN SHALL BE 2.4 m.
 7. REPLACE ALL EXISTING LEAD SERVICES FROM PROPOSED WATERMAIN TO R.
 8. NOTIFY ALL AFFECTED RESIDENTS AND BUSINESSES 24 HOURS IN ADVANCE OF ANY WATER SHUTDOWNS OR DISRUPTION OF SERVICE.

METRIC
WHOLE NUMBERS INDICATE MILLIMETRES
DECIMALIZED NUMBERS INDICATE METRES

NOTE: ALL VALVES TO BE INSTALLED COUNTERCLOCKWISE TO CLOSE

WARNING

IF POWER EQUIPMENT OR EXPLOSIVES ARE TO BE USED FOR EXCAVATION ON THIS PROJECT THE CONTRACTOR MUST:

- 1) NOTIFY THE GAS COMPANY OF THE PROPOSED LOCATION OF EXCAVATION.
- 2) TAKE PRECAUTION TO AVOID DAMAGE TO GAS COMPANY INSTALLATIONS.

SEE PROVINCIAL REGULATION 210/72 FOR DETAILS

EXISTING	LEGEND-PLAN	PROPOSED	EXISTING	LEGEND-PLAN	PROPOSED	EXISTING	LEGEND-PROFILE	PROPOSED
200 WM	WATERMAIN	200 WM	SL, HYDRO	50 GAS	50 GAS	150 WM	WATERMAIN	150 WM
⊕	HYDRANT	⊕	MTS	300 LDS	300 LDS	+	HYDRANT	+
⊙	VALVE	⊙	TRAFFIC SIGNALS	250 WWS	250 WWS	×	VALVE	×
525 LDS	LAND DRAINAGE SEWER	525 LDS	GAS	375 WWS	375 WWS	○	PROFILE	○
375 WWS	WASTEWATER SEWER	375 WWS	SURVEY BAR	250 WWS	250 WWS	△	GROUND ABOVE PIPE	△
○	MANHOLE	○	FENCE	250 WWS	250 WWS	▽	⊕ DITCH (NORTH & WEST)	▽
□	CATCH BASIN	□	POLE - HYDRO, MTS	250 WWS	250 WWS	▽	⊕ DITCH (SOUTH & EAST)	▽
▽	CURB INLET	▽	CURB STOP	250 WWS	250 WWS	▽	GUY ANCHOR	▽
▽	REDUCER	▽	POLE - HYDRO, MTS	250 WWS	250 WWS	▽	LIGHT STANDARD	▽
▽	COUPLER	▽	CURB STOP	250 WWS	250 WWS	▽	TREE	▽
▽	ANODE	▽	POLE - HYDRO, MTS	250 WWS	250 WWS	▽		▽

LOCATION APPROVED UNDERGROUND STRUCTURES

SUPV. U/G STRUCTURES COMMITTEE DATE

NOTE: LOCATION OF UNDERGROUND STRUCTURES AS SHOWN ARE BASED ON THE BEST INFORMATION AVAILABLE BUT NO GUARANTEE IS GIVEN THAT ALL EXISTING UTILITIES ARE SHOWN OR THAT THE GIVEN LOCATIONS ARE EXACT. CONFIRMATION OF EXISTENCE AND EXACT LOCATION OF ALL SERVICES MUST BE OBTAINED FROM THE INDIVIDUAL UTILITIES BEFORE PROCEEDING WITH CONSTRUCTION.

CITY OF WINNIPEG WATER AND WASTE ENGINEERING DIVISION

DESIGNED BY: NC CHECKED BY: NC

DRAWN BY: C/JH APPROVED BY: KZ

HOR. SCALE: 1:250
VERTICAL: 1:50

RELEASED FOR CONSTRUCTION

DATE: 2009 03 12

ENGINEER'S SEAL

ORIGINAL SIGNED BY K.R. ZUREK 09/03/12

BID OPPORTUNITY 196-2009
FILENAME: D-11727.dwg
PLOT DATE: 2009 03 13

THE CITY OF WINNIPEG
WATER AND WASTE DEPARTMENT

2009 WATERMAIN RENEWALS
CONTRACT 4
STANIER STREET
DEARBORN AVENUE TO GORDON AVENUE

SHEET 10 OF 10
CITY DRAWING NUMBER
D-11727