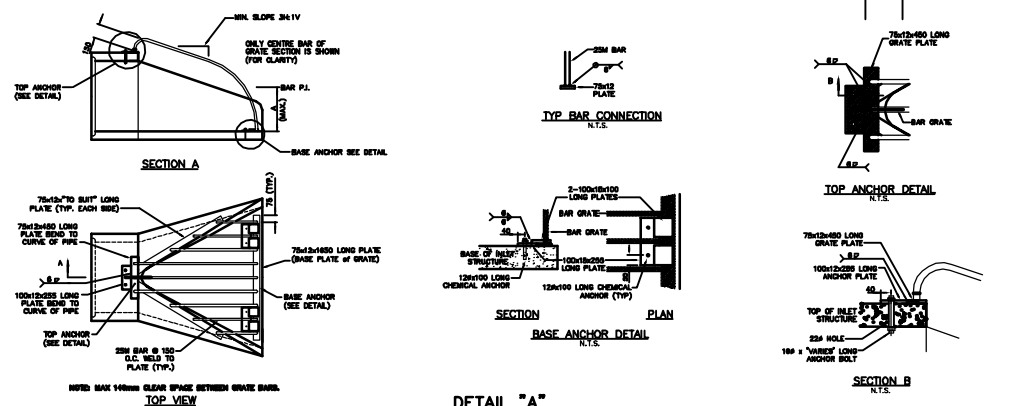
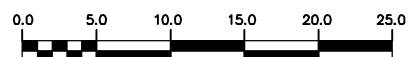


NOTE: CHAINAGES SHOWN ARE ALONG S.P. OF FRASER RD



METRIC  
WHOLE NUMBERS INDICATE MILLIMETRES  
DECIMALIZED NUMBERS INDICATE METRES

**WARNING**  
IF POWER EQUIPMENT OR EXPLOSIVES ARE TO BE USED FOR EXCAVATION ON THIS PROJECT THE CONTRACTOR MUST:  
1) NOTIFY THE GAS COMPANY OF THE PROPOSED LOCATION OF EXCAVATION.  
2) TAKE PRECAUTION TO AVOID DAMAGE TO GAS COMPANY INSTALLATIONS.  
SEE PROVINCIAL REGULATION 210/72 FOR DETAILS



200 WM	WATERMAIN	200 WM	SL - HYDRO	150 WM	WATERMAIN
⊕	HYDRANT	⊕	MTS	+	HYDRANT
⊙	VALVE	⊙	TRAFFIC SIGNALS	+	VALVE
525 LDS	LAND DRAINAGE SEWER	525 LDS	GAS	300 LDS	LAND DRAINAGE SEWER
375 WWS	WASTEWATER SEWER	375 WWS	SURVEY BAR	250 WWS	WASTEWATER SEWER
○	MANHOLE	●	FENCE	⊕	PROFILE
□	CATCH BASIN	■	POLE - HYDRO, MTS	⊕	GROUND ABOVE PIPE
▽	CURB INLET	▽	CURB STOP	⊕	⊕ DITCH (NORTH & WEST)
⊕	JUNCTIONS	⊕	GUY ANCHOR	⊕	⊕ DITCH (SOUTH & EAST)
⊕	CULVERT	⊕	LIGHT STANDARD	⊕	⊕ GUTTER (NORTH & WEST)
⊕	ANODE	⊕	TREE	⊕	⊕ GUTTER (SOUTH & EAST)
EXISTING	LEGEND-PLAN	PROPOSED	EXISTING	LEGEND-PLAN	PROPOSED
EXISTING	LEGEND-PROFILE	PROPOSED	EXISTING	LEGEND-PROFILE	PROPOSED

LOCATION APPROVED  
UNDERGROUND STRUCTURES

SUPV. U/G STRUCTURES COMMITTEE DATE

NOTE:  
LOCATION OF UNDERGROUND STRUCTURES AS SHOWN ARE BASED ON THE BEST INFORMATION AVAILABLE BUT NO GUARANTEE IS GIVEN THAT ALL EXISTING UTILITIES ARE SHOWN OR THAT THE GIVEN LOCATIONS ARE EXACT. CONFIRMATION OF EXISTENCE AND EXACT LOCATION OF ALL SERVICES MUST BE OBTAINED FROM THE INDIVIDUAL UTILITIES BEFORE PROCEEDING WITH CONSTRUCTION.

B.M. ELEV.	FIELD BOOK #:
POSTED TO LBS	
NO.	REVISIONS
DATE	BY

**CITY OF WINNIPEG**  
**WATER AND WASTE**  
**ENGINEERING DIVISION**

DESIGNED BY: CT  
CHECKED BY: GEM

DRAWN BY: CJH  
APPROVED BY: GEM

HOR. SCALE: 1:250  
VERTICAL: 1:50

DATE: 2009 03 27

ENGINEER'S SEAL  
ORIGINAL SIGNED BY G.E. MOHR  
09/03/27

BID OPPORTUNITY: 207-2009  
FILENAME: LD-5325.dwg  
PLOT DATE: 2009 03 27

**THE CITY OF WINNIPEG**  
WATER AND WASTE DEPARTMENT

2009 DRAINAGE DITCH UPGRADING AND ASSOCIATED WORKS  
**FRASER ROAD**  
AT INTERSECTION WITH ST MARY'S ROAD

SHEET 1 OF 1  
CITY DRAWING NUMBER  
LD-5325