

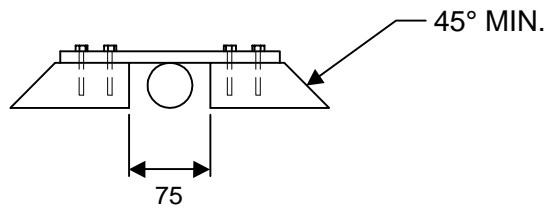
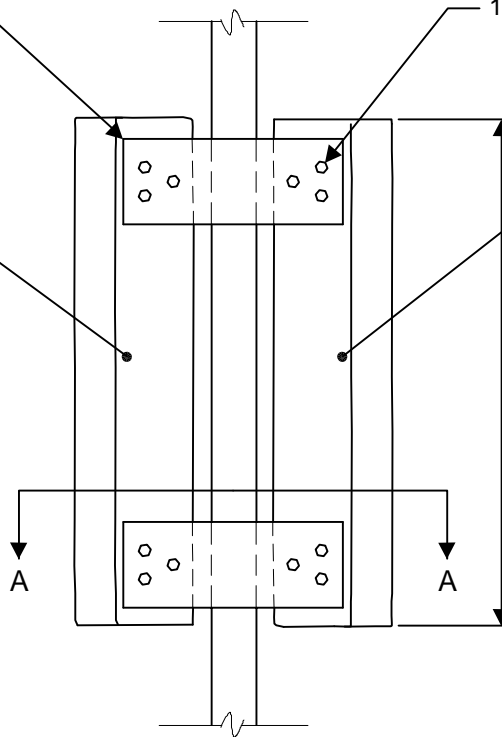
12 THICK RUBBER MATERIAL (MUD FLAPS)

12x38 S.S. LAG BOLTS

TO BE PAINTED BLAZE ORANGE

2x6 ROUGH-CUT LUMBER

1200 MAX.



SECTION A-A

NOTE: 3 RAMPS WILL BE REQUIRED TO CROSS ONE LANE OF TRAFFIC

DIMENSIONS IN MILLIMETERS



**THE CITY OF WINNIPEG**  
**WATER & WASTE DEPARTMENT**

Reference Spec. No.

- -

Drawing Name:

Designed By:

NC

Drawn By:

CJH

Scale:

N.T.S.

WATER SUPPLY HOSE  
 TRAFFIC RAMP

Checked By:

NC

Date: 04-06-17

Revision:

Drawing No.

Approved:

-

D-8211