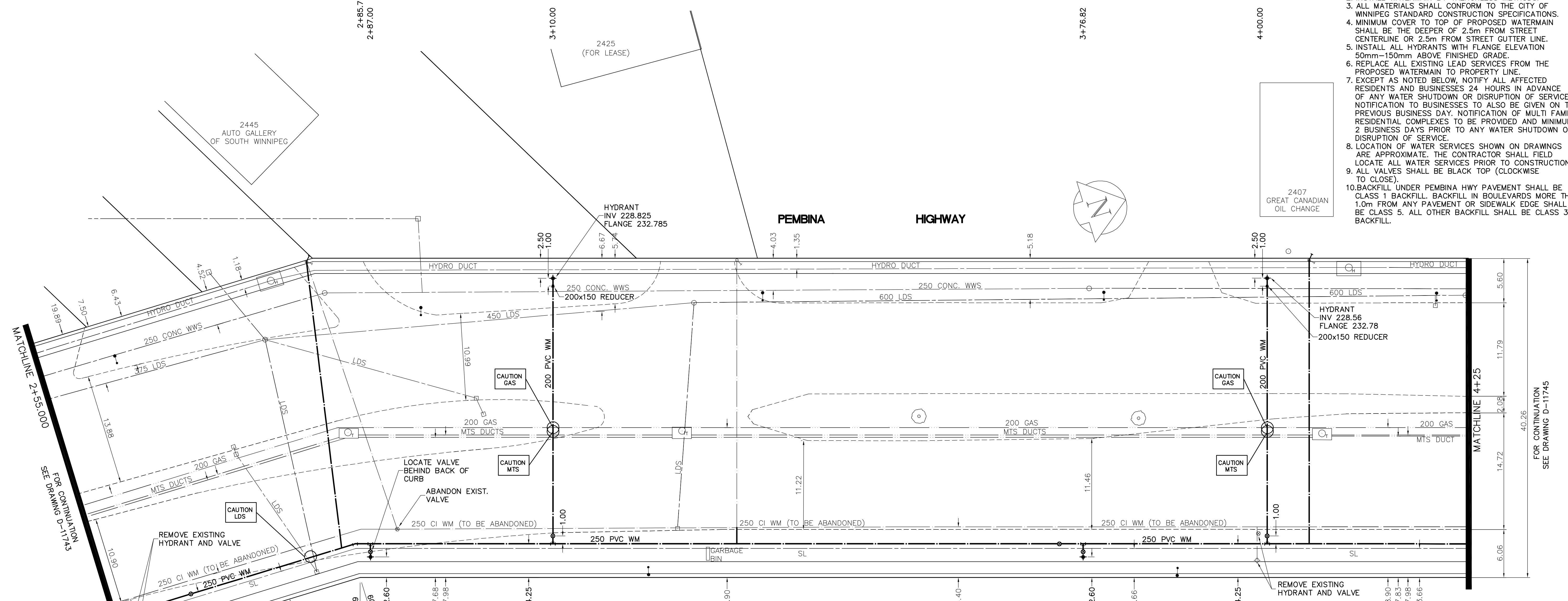


- CONSTRUCTION NOTES**
1. EXPOSE WATERMAIN CONNECTIONS AND CONFIRM INVERTS PRIOR TO CONSTRUCTION.
  2. INSTALL WATERMAIN BY TRENCHLESS METHODS.
  3. ALL MATERIALS SHALL CONFORM TO THE CITY OF WINNIPEG STANDARD CONSTRUCTION SPECIFICATIONS.
  4. MINIMUM COVER TO TOP OF PROPOSED WATERMAIN SHALL BE THE DEEPER OF 2.5m FROM STREET CENTERLINE OR 2.5m FROM STREET GUTTER LINE.
  5. INSTALL ALL HYDRANTS WITH FLANGE ELEVATION 50mm-150mm ABOVE FINISHED GRADE.
  6. REPLACE ALL EXISTING LEAD SERVICES FROM THE PROPOSED WATERMAIN TO PROPERTY LINE.
  7. EXCEPT AS NOTED BELOW, NOTIFY ALL AFFECTED RESIDENTS AND BUSINESSES 24 HOURS IN ADVANCE OF ANY WATER SHUTDOWN OR DISRUPTION OF SERVICE. NOTIFICATION TO BUSINESSES TO ALSO BE GIVEN ON THE PREVIOUS BUSINESS DAY. NOTIFICATION OF MULTI FAMILY RESIDENTIAL COMPLEXES TO BE PROVIDED AND MINIMUM 2 BUSINESS DAYS PRIOR TO ANY WATER SHUTDOWN OR DISRUPTION OF SERVICE.
  8. LOCATION OF WATER SERVICES SHOWN ON DRAWINGS ARE APPROXIMATE. THE CONTRACTOR SHALL FIELD LOCATE ALL WATER SERVICES PRIOR TO CONSTRUCTION.
  9. ALL VALVES SHALL BE BLACK TOP (CLOCKWISE TO CLOSE).
  10. BACKFILL UNDER PEMBINA HWY PAVEMENT SHALL BE CLASS 1 BACKFILL. BACKFILL IN BOULEVARDS MORE THAN 1.0m FROM ANY PAVEMENT OR SIDEWALK EDGE SHALL BE CLASS 5. ALL OTHER BACKFILL SHALL BE CLASS 3 BACKFILL.



ADDRESS	NATURE OF SERVICE	SIZE	MATERIAL	DISTANCE SC TO PROPERTY	POSITION OF SC (curb stop)	POSITION OF CC (corp)	COMMENTS
2445 PEMBINA HIGHWAY	COMMERCIAL	20 mm	COPPER	0.3 m	PROPERTY	Long: 4.6 m Short: of	RENEW TO PROPERTY AS 25 mm
2425 PEMBINA HIGHWAY	COMMERCIAL	0.3 m	PROPERTY	Long: of Short: of	LEFT LINE	BUILDING	
2407 PEMBINA HIGHWAY	COMMERCIAL	20 mm	COPPER	0.3 m	PROPERTY	Long: of Short: of	RENEW TO PROPERTY AS 25 mm

**APEGN**  
Certificate of Authorization  
AECOM Canada Ltd.  
Original dated on: 09/04/29  
No. 4671 Date: 2009/04/29

**METRIC**  
WHOLE NUMBERS INDICATE MILLIMETRES  
DECIMALIZED NUMBERS INDICATE METRES

0 10m 20m  
SCALE

EXISTING	LEGEND - PLAN	PROPOSED	EXISTING	LEGEND - PROFILE	PROPOSED
150 mm W.M.	WATERMAIN	150 mm W.M.	150 mm W.M.	WATERMAIN	150 mm W.M.
300mm L.D.S.	LAND DRAINAGE SEWER	300mm L.D.S.	300mm L.D.S.	LAND DRAINAGE SEWER	300mm L.D.S.
250mm W.W.S.	WASTEWATER SEWER	250mm W.W.S.	250mm W.W.S.	WASTEWATER SEWER	250mm W.W.S.
○	MANHOLE	●	○	MANHOLE	●
□	CATCH BASIN	■	□	CATCH BASIN	■
▽	CURB INLET	▽	▽	CURB INLET	▽
+	JUNCTIONS	+	+	JUNCTIONS	+
—	CULVERT	—	—	CULVERT	—
—	GAS	—	—	GAS	—
—	HYDRO TELEPHONE	—	—	HYDRO TELEPHONE	—
—	CONCRETE	—	—	CONCRETE	—
—	ASPHALT	—	—	ASPHALT	—
—	PROPERTY LINE	—	—	PROPERTY LINE	—
—	SURVEY BAR	—	—	SURVEY BAR	—
—	CURB STOP	—	—	CURB STOP	—
—	TREE	—	—	TREE	—
—	ANODE	—	—	ANODE	—
—	CONCRETE SIDEWALK	—	—	CONCRETE SIDEWALK	—
—	FENCE	—	—	FENCE	—

**LOCATION APPROVED UNDERGROUND STRUCTURES**

SUPV. U/G STRUCTURES COMMITTEE DATE

**NOTE:**  
LOCATION OF UNDERGROUND STRUCTURES AS SHOWN ARE BASED ON THE BEST INFORMATION AVAILABLE. BUT NO GUARANTEE IS GIVEN THAT ALL EXISTING UTILITIES ARE SHOWN OR THAT THE GIVEN LOCATIONS ARE EXACT. CONFIRMATION OF EXISTENCE AND EXACT LOCATION OF ALL SERVICES MUST BE OBTAINED FROM THE INDIVIDUAL UTILITIES BEFORE PROCEEDING WITH CONSTRUCTION.

**B.M. ELEV.** 76-023, S.E. Cor. Pembina Hwy. & Markham Rd., T-11 in E. Conc. foundation of Markham Water Hotel, No. 2285 Pembina Hwy., 1.5 m S. & 0.3 m below Conc. blocks of N.E. Cor. of Bldg. E. 232.806'

NO.	REVISIONS	DATE	BY
0	ISSUED FOR TENDER	2009/04/29	GSK
A	ISSUED FOR REVIEW	2009/04/03	GSK

**AECOM**

DESIGNED BY: ADB  
DRAWN BY: GDL  
HOR. SCALE: 1:250  
VERTICAL: 1:50

CHECKED BY: GSK  
APPROVED BY: KWF  
RELEASED FOR CONSTRUCTION BY: K. ZUREK

DATE: 2009/03/20  
DATE: 09/04/29

**ENGINEER'S SEAL**  
PROVINCE OF MANITOBA  
ORIGINAL SIGNED BY  
K.W. FITCHETT  
09/04/29  
REGISTERED PROFESSIONAL ENGINEER

CONSULTANT DRAWING NO. 111272-002

**THE CITY OF WINNIPEG**  
Winnipeg WATER AND WASTE DEPARTMENT

**2009 WATERMAIN RENEWALS CONTRACT 7**

PEMBINA HIGHWAY  
BISON DRIVE TO 117m S. OF DARTMOUTH DRIVE  
STA 2+55 TO STA 4+25

SHEET 2 OF 9  
CITY DRAWING NUMBER D-11744