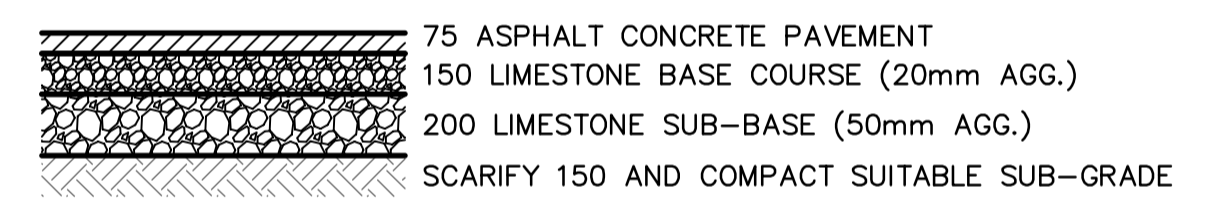


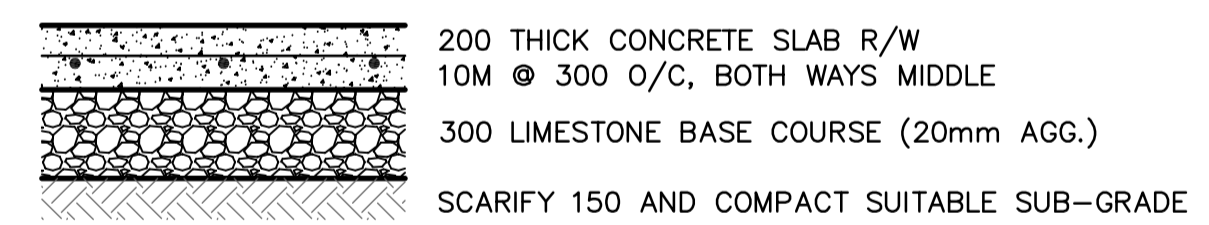
REMOVABLE STEEL BOLLARD DETAIL  
N.T.S.

- CONSTRUCTION NOTES:**
- ALL PRODUCTS INCORPORATED IN THE WORK SHALL CONFORM TO THE CITY WINNIPEG "STANDARD CONSTRUCTION SPECIFICATIONS" AND BE REGISTERED IN THE CITY OF WINNIPEG LISTING OF APPROVED PRODUCTS OR AS SPECIFIED ON THIS DRAWING. ALL CONSTRUCTION SHALL CONFORM TO THE CITY OF WINNIPEG "STANDARD CONSTRUCTION SPECIFICATIONS", LATEST EDITION.
  - IT IS THE RESPONSIBILITY OF THE CONTRACTOR TO VERIFY THE LOCATIONS OF ALL UTILITIES, PIPES, SURVEY MARKERS, OR STRUCTURES, AND TO NOTIFY ALL RELEVANT UTILITIES PRIOR TO COMMENCEMENT OF CONSTRUCTION. THE CONTRACTOR SHALL NOTIFY THE CONTRACT ADMINISTRATOR OF ANY ERROR OR OMISSION PRIOR TO CONSTRUCTION.
  - IN ACCORDANCE TO THE CITY OF WINNIPEG SURVEY INFRASTRUCTURE PROTECTION PROGRAM, THE CONTRACTOR SHALL NOTIFY THE GEOMATICS BRANCH A MINIMUM 3 DAYS PRIOR TO START OF CONSTRUCTION.
  - DESCRIPTION OF PROPERTY LIMITS, AND EXISTING AND/OR PROPOSED FEATURES RELATIVE TO THESE LIMITS AS SHOWN ON THIS DRAWING DO NOT REPRESENT A LEGAL SURVEY. GENIVAR MAKES NO REPRESENTATION OR GUARANTEE THAT THE PROPERTY LIMIT INFORMATION IS ACCURATE. GENIVAR ACCEPTS NO RESPONSIBILITY FOR DAMAGES, IF ANY, SUFFERED BY ANY THIRD PARTY AS A RESULT OF DECISIONS OR ACTIONS BASED ON THIS DRAWING.
  - ALL AREAS AFFECTED BY CONSTRUCTION TO BE RESTORED TO THE ORIGINAL CONDITION OR BETTER UNLESS NOTED OTHERWISE ON THE DRAWING. ALL REGRADED/DISTURBED SOD AREAS TO RECEIVE TOPSOIL AND SOD UNLESS NOTED OTHERWISE.

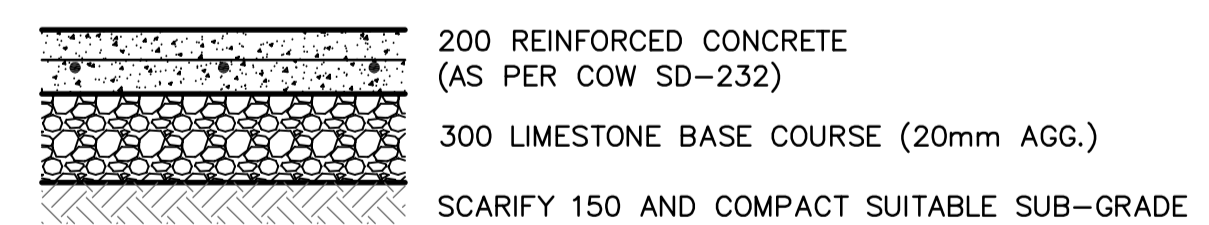
- STORM WATER DISCHARGE CRITERIA**
- RUN-OFF FLOWS DETERMINED BY THE RATIONAL FORMULA METHOD  
 $Q = 0.278CIA$ , WHERE  $Q$  = RATE OF RUNOFF ( $m^3/s$ )  
 $C$  = COEFFICIENT OF RUNOFF  
 $I$  = RAINFALL INTENSITY ( $mm/HR$ )  
 $A$  = DRAINAGE AREA ( $km^2$ )
  - RAINFALL INTENSITY ( $I$ ) = 5 YEAR CITY OF WINNIPEG DESIGN STORM,  $I = 89.4mm/HR$   
 $I$  = 25 YEAR CITY OF WINNIPEG DESIGN STORM,  $I = 127.2mm/HR$
  - 'Q' (5-YEAR) - PRE-DEVELOPMENT  
 AREA = 0.23 Ha (or 0.56 ACRES)  
 $C$  - ALLOWABLE = 0.35  
 ALLOWABLE DISCHARGE FROM SITE,  $Q_5 = 19.5 L/s$
  - 'Q' (25-YEAR) - POST DEVELOPMENT  
 TIME OF CONCENTRATION = 10 MINUTES,  $Q_{25} = 50.4 L/s$   
 RESTRICTED FLOW,  $Q = 28.4 L/s$  (USING 100mm FLOW RESTRICTOR)  
 REQUIRED ON-SITE STORAGE =  $13.2 m^3$   
 AVAILABLE ON-SITE STORAGE =  $21.7 m^3$



ASPHALT PAVEMENT STRUCTURE  
N.T.S.



CONCRETE PAD STRUCTURE  
N.T.S.



CONCRETE APPROACH STRUCTURE  
N.T.S.



**METRIC**  
WHOLE NUMBERS INDICATE MILLIMETRES  
DECIMALIZED NUMBERS INDICATE METRES

EXISTING	LEGEND - PLAN	PROPOSED	EXISTING	LEGEND - PLAN	PROPOSED	EXISTING	LEGEND - PROFILE	PROPOSED
150 mm WM	WATERMAIN	150 mm WM	---	GAS	---	150 mm WM	WATERMAIN	150 mm WM
○	HYDRANT	●	---	HYDRO	---	+	HYDRANT	+
○	VALVE	●	---	M.T.S.	---	X	VALVE	X
300 mm LDS	LAND DRAINAGE SEWER	300 mm LDS	⊠	PEDESTAL	---	300 mm LDS	SEWER	300 mm LDS
250 mm CS	WASTE WATER SEWER	250 mm CS	⊠	GROUND ELEVATION	40.00	---	MANHOLE	---
○	MANHOLE	●	⊠	PAVEMENT ELEVATION	(240.00)	---	PROPERTY LINE	---
□	CATCH BASIN	■	⊠	SURVEY BAR	---	---	SOUTH/EAST PL	---
△	CURB INLET	⊠	⊠	CURB STOP	---	---	NORTH/WEST PL	---
▽	SIGN	⊠	⊠	TESTHOLE	---	---	CL PROFILE	---
○	LAMP STANDARD	●	⊠	---	---	---	SOUTH/EAST GUTTER	---
○	UTILITY POLE	●	⊠	---	---	---	NORTH/WEST GUTTER	---

**LOCATION APPROVED**  
UNDERGROUND STRUCTURES

SUPV. U/G STRUCTURES COMMITTEE DATE

NOTE:  
LOCATION OF UNDERGROUND STRUCTURES AS SHOWN ARE BASED ON THE BEST INFORMATION AVAILABLE BUT NO GUARANTEE IS GIVEN THAT THE GIVEN LOCATIONS ARE EXACT. CONFIRMATION OF EXISTENCE AND EXACT LOCATION OF ALL SERVICES MUST BE OBTAINED FROM THE INDIVIDUAL UTILITIES BEFORE PROCEEDING WITH CONSTRUCTION.

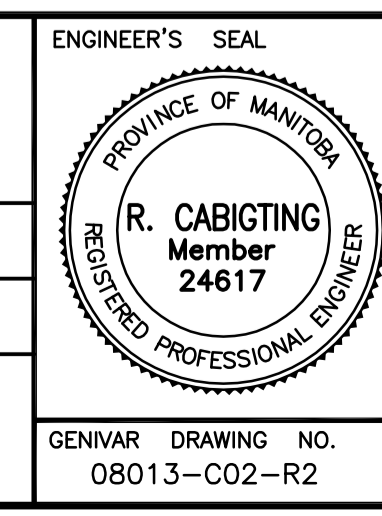
C.W.B.M. 53-027..... 230.243m  
S.E. CORNER OF ASHLAND AVE. & ECCLES ST., TBLT.  
IN N. CONC. FOUNDATION OF No. 90 ASHLAND AVE.,  
0.7 m W. & 0.1 m BELOW STUCCO FROM N.E.  
CORNER OF BUILDING.

**GENIVAR**  
10 PRAIRIE WAY WINNIPEG, MANITOBA R2J 3J8  
PH: (204)-477-8650 FAX: (204)-474-2864

DESIGNED BY R.C. CHECKED BY D.T.B.  
DRAWN BY R.C. APPROVED BY B.D.E.

HOR. SCALE: 1:150  
VERT. SCALE: ---

ISSUED FOR TENDER 09/04/01 R.C.  
NO. REVISIONS DATE BY DATE FEBRUARY 2008



**THE CITY OF WINNIPEG**  
PLANNING, PROPERTY & DEVELOPMENT DEPARTMENT

**RIVERVIEW COMMUNITY CENTRE**  
PARKING LOT & DRAINAGE IMPROVEMENT PROJECT

PROPOSED SITE PLAN

CITY DRAWING NO. 276-2009-C01  
SHEET 2 OF 2  
REV. 2 0

GENIVAR DRAWING NO. 08013-C02-R2