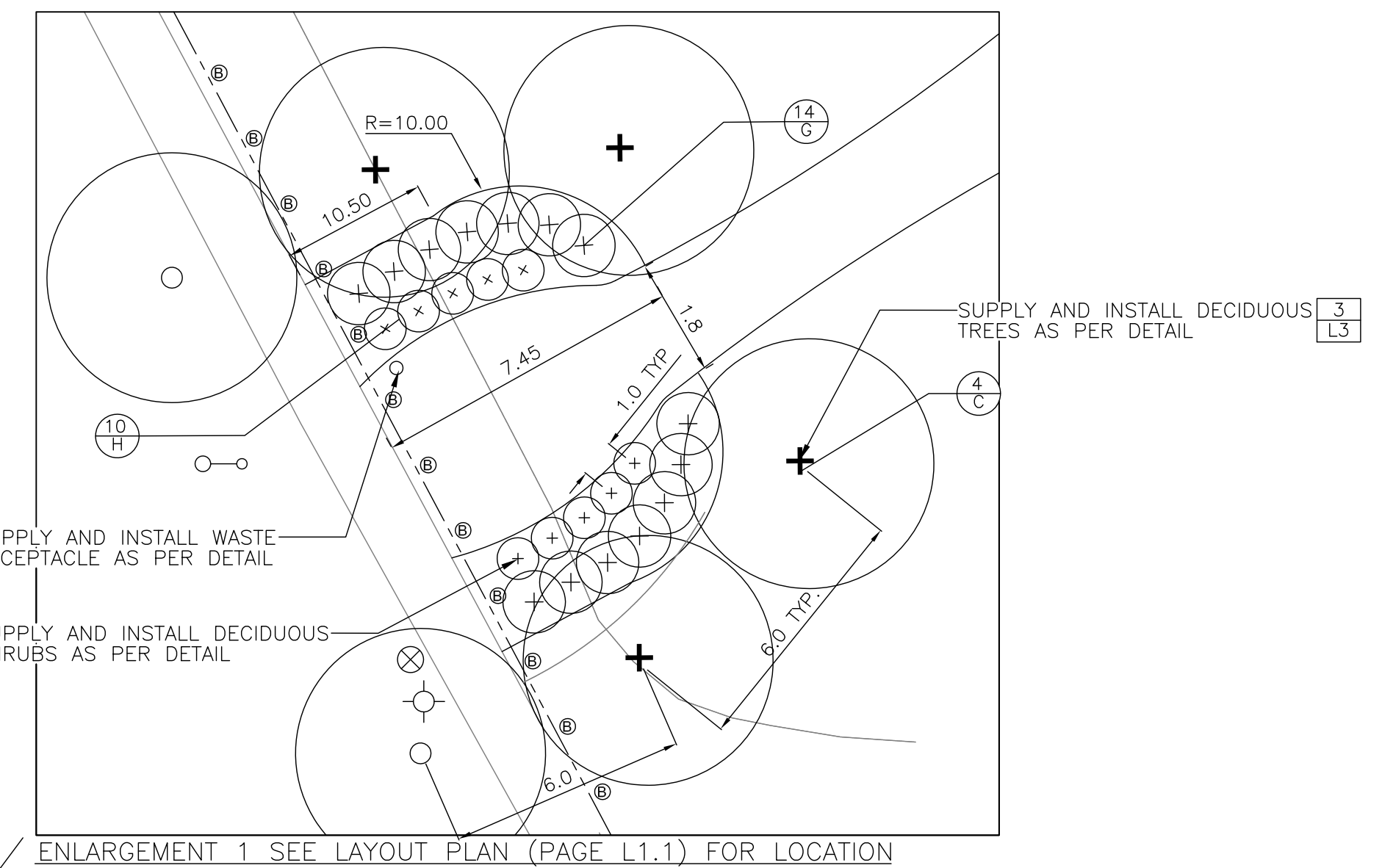


KEY	QTY.	COMMON NAME/BOTANICAL NAME	SIZE	REMARKS
DECIDUOUS TREES				
A	5	SILVER MAPLE / ACER SACCHARINUM	60mm cal.	SPECIMEN, B&B, MACHINE DUG WITH MIN. 10 BRANCHES IN WELL BRANCHED HEAD, STRAIGHT TRUNK, MIN. HT. 3.0m, BRANCHING HT. 1.5m.
B	2	BUTTERNUT / JUGLANS CINEREA	60mm cal.	SPECIMEN, B&B, MACHINE DUG WITH MIN. 10 BRANCHES IN WELL BRANCHED HEAD, STRAIGHT TRUNK, MIN. HT. 6.0m, BRANCHING HT. 1.8m.
C	9	JAPANESE TREE LILAC / SYRINGA RETICULATA	60mm cal.	SPECIMEN, B&B, MACHINE DUG WITH MIN. 10 BRANCHES IN WELL BRANCHED HEAD, STRAIGHT TRUNK, MIN. HT. 3.0m, BRANCHING HT. 1.5m.
D	3	SPRING SNOW FL. CRAB / MALUS X 'SPRING SNOW'	60mm cal.	SPECIMEN, B&B, MACHINE DUG WITH MIN. 10 BRANCHES IN WELL BRANCHED HEAD, STRAIGHT TRUNK, MIN. HT. 3.0m, BRANCHING HT. 1.5m.
E	3	BUR OAK / QUERCUS MACROCARPA	60mm cal.	SPECIMEN, B&B, MACHINE DUG WITH MIN. 10 BRANCHES IN WELL BRANCHED HEAD, STRAIGHT TRUNK, MIN. HT. 6.0m, BRANCHING HT. 1.8m.
F	5	SHOWY MOUNTAIN ASH / SORBUS DECORA	60mm cal.	SPECIMEN, B&B, MACHINE DUG WITH MIN. 10 BRANCHES IN WELL BRANCHED HEAD, STRAIGHT TRUNK, MIN. HT. 6.0m, BRANCHING HT. 1.8m.
L	3	HARVEST GOLD LINDEN / TILIA MONGOLICA	60mm cal.	SPECIMEN, B&B, MACHINE DUG WITH MIN. 10 BRANCHES IN WELL BRANCHED HEAD, STRAIGHT TRUNK, MIN. HT. 6.0m, BRANCHING HT. 1.8m.
DECIDUOUS SHRUBS				
G	14	DIABLO NINEBARK / PHYSOCARPUS OPULIFOLIUS	2 GAL. POT	SPECIMEN, CONTAINER GROWN, WITH MINIMUM 3 STALKS IN WELL BRANCHED PLANT, MIN. 300MM HT.
H	10	McKAYS WHITE POTENTILLA / POTENTILLA FRUTICOSA	2 GAL. POT	SPECIMEN, CONTAINER GROWN, WITH MINIMUM 3 STALKS IN WELL BRANCHED PLANT, MIN. 300MM HT.



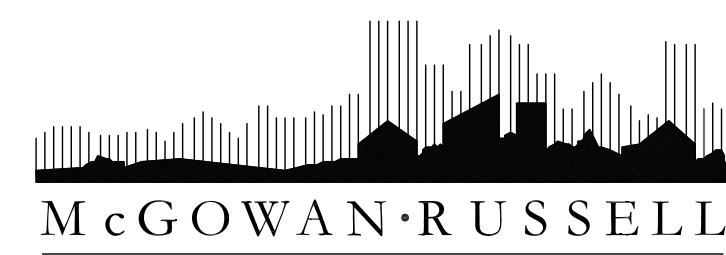
- 2 | SUPPLY AND INSTALL WASTE RECEPTACLE AS PER DETAIL
- 3 | SUPPLY AND INSTALL DECIDUOUS SHRUBS AS PER DETAIL

2	SUBMIT TO CITY FOR 100%	05/16/09	MW
1	SUBMIT TO CITY FOR 60%	05/01/09	MW
No.	Revisions	Date	By
Date		Scale	
30-03-2009		1:400	
Designed By	Drawn By	Checked By	
AH	MW	AH	

NOTES

1. ALL DIMENSIONS SHOWN IN METRIC UNITS. NUMBERS WITH DECIMALS INDICATE METERS. WHOLE NUMBERS INDICATE MILLIMETERS.
2. ALL UTILITIES ARE SHOWN AS INFORMATION ONLY. CONTRACTOR TO CONFIRM LOCATION OF ALL UTILITIES ON SITE PRIOR TO CONSTRUCTION.
3. CONTRACTOR TO STAKE OUT LOCATION OF ALL WORKS FOR APPROVAL BY CONTRACT ADMINISTRATOR PRIOR TO ANY CONSTRUCTION OR REMOVALS.
4. CONTRACTOR TO CONFIRM ALL DIMENSIONS ON SITE AND REPORT ANY DISCREPANCIES TO THE CONTRACT ADMINISTRATOR PRIOR TO CONSTRUCTION.
5. CONTRACTOR IS RESPONSIBLE FOR ALL REMOVALS AS REQUIRED TO CONSTRUCT ALL WORKS AS SHOWN ON PLANS AND DETAILS. ALL ITEMS TO BE REMOVED MUST BE DISPOSED OF LEGALLY OFF SITE.
6. SLOPE TOLERANCES: PATHWAY: -MIN. CROSS SLOPE 1% -MAX. CROSS SLOPE 2% -MAX. LONGITUDINAL 5% SODDED AREA: -MIN. 2% -MAX. 25%
7. DURING CONSTRUCTION, CONTRACTOR TO PROTECT, TO CITY OF WINNIPEG STANDARDS ALL EXISTING TREES, SIDEWALKS, CURBS, SOD, UTILITIES, AND PAVING TO REMAIN. AREAS DAMAGED DURING CONSTRUCTION TO BE REPAIRED TO CITY OF WINNIPEG STANDARDS AT CONTRACTOR'S COST.
8. ALL WORK TO BE DONE IN ACCORDANCE WITH CITY OF WINNIPEG STANDARD CONSTRUCTION SPECIFICATIONS UNLESS OTHERWISE NOTED.
9. CONTRACTOR TO REPAIR ALL ON AND OFF SITE SODDED AREAS, SHRUB BEDS, TREES, CONCRETE, ROAD PAVING AND CURBS ETC., DAMAGED DURING CONSTRUCTION TO CONTRACT ADMINISTRATOR'S SATISFACTION AND TO THE CITY OF WINNIPEG STANDARDS AT HIS/HER OWN COST.
10. REFER ALSO TO WRITTEN SPECIFICATIONS.
11. ENSURE POSITIVE DRAINAGE ON PATHWAYS AND IN ADJACENT SODDED AREAS.
12. MAINTAIN EXISTING GRADE AND DRAINAGE PATTERNS WHERE POSSIBLE.
13. CONSTRUCTION ACCESS TO BE LIMITED TO THE ROUTES SPECIFIED ON SITE BY CONTRACT ADMINISTRATOR.
14. CONTRACTOR TO ADJUST GRADES OF ALL SERVICES WITHIN LIMIT OF WORK AS REQUIRED INCLUDING ALL MANHOLES, CATCH BASINS, FIRE HYDRANT, CURB STOPS, ETC.
15. SUITABLE GRANULAR BASE COURSE MATERIAL TO BE SALVAGED AND RE-USED AS INSTRUCTED BY CONTRACT ADMINISTRATOR.

NOTE:
ENSURE POSITIVE DRAINAGE ON ALL PATHWAYS AND NEW SODDED AREAS TO EXISTING SWALES AND CATCH BASINS



McGOWAN RUSSELL
Client
CITY OF WINNIPEG

Project Title
BAYVIEW PARK

Sheet Title
**LAYOUT/
PLANTING PLAN**

Project No.
08-031

Drawing No.
L1.1