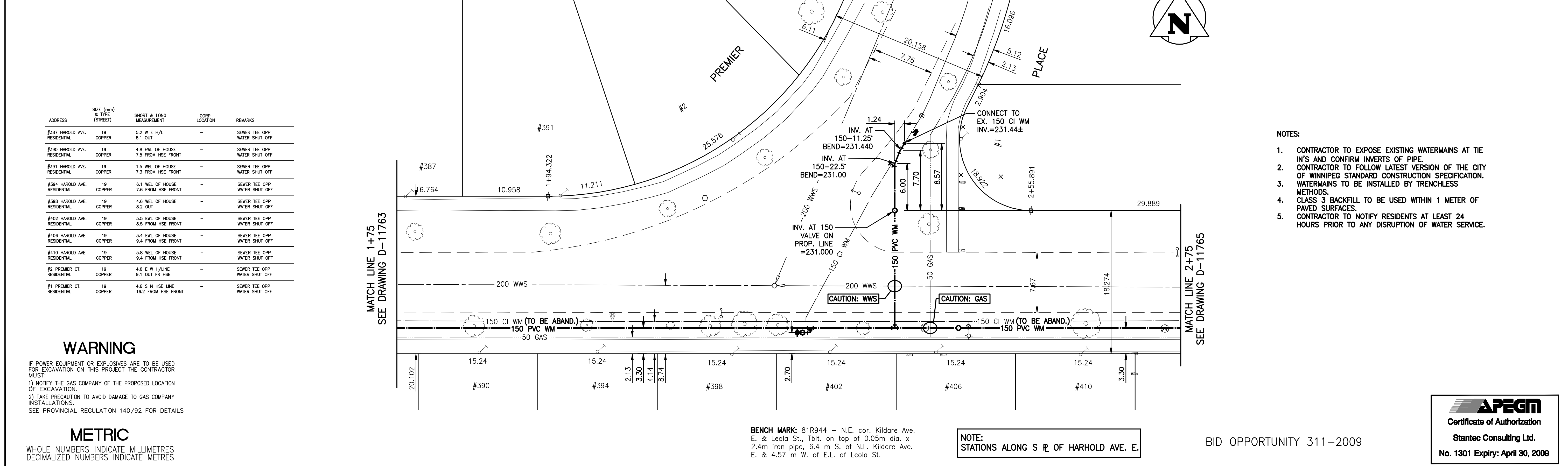


235
234
233
232
231
230
229
228
227
226

1+75 2+00 2+50 2+75



HAROLD AVENUE EAST
PREMIER PLACE
BENCH MARK: 81R944 - N.E. cor. Kildare Ave. E. & Leola St., Tblt on top of 0.05m dia. x 2.4m iron pipe, 6.4 m S. of N.L. Kildare Ave. E. & 4.57 m W. of E.L. of Leola St.

ADDRESS	SIZE (mm) & TYPE (STREET)	SHORT & LONG MEASUREMENT	CORP LOCATION	REMARKS
#387 HAROLD AVE. RESIDENTIAL	19 COPPER	5.2 W E H/L 8.1 OUT	-	SEWER TEE OPP WATER SHUT OFF
#390 HAROLD AVE. RESIDENTIAL	19 COPPER	4.8 ENL OF HOUSE 7.5 FROM HSE FRONT	-	SEWER TEE OPP WATER SHUT OFF
#391 HAROLD AVE. RESIDENTIAL	19 COPPER	1.5 WEL OF HOUSE 7.3 FROM HSE FRONT	-	SEWER TEE OPP WATER SHUT OFF
#394 HAROLD AVE. RESIDENTIAL	19 COPPER	6.1 WEL OF HOUSE 7.6 FROM HSE FRONT	-	SEWER TEE OPP WATER SHUT OFF
#398 HAROLD AVE. RESIDENTIAL	19 COPPER	4.6 WEL OF HOUSE 8.2 OUT	-	SEWER TEE OPP WATER SHUT OFF
#402 HAROLD AVE. RESIDENTIAL	19 COPPER	5.5 ENL OF HOUSE 8.5 FROM HSE FRONT	-	SEWER TEE OPP WATER SHUT OFF
#406 HAROLD AVE. RESIDENTIAL	19 COPPER	3.4 ENL OF HOUSE 9.4 FROM HSE FRONT	-	SEWER TEE OPP WATER SHUT OFF
#410 HAROLD AVE. RESIDENTIAL	19 COPPER	5.8 WEL OF HOUSE 9.4 FROM HSE FRONT	-	SEWER TEE OPP WATER SHUT OFF
#2 PREMIER CT. RESIDENTIAL	19 COPPER	4.6 E W H/LINE 9.1 OUT FR HSE	-	SEWER TEE OPP WATER SHUT OFF
#1 PREMIER CT. RESIDENTIAL	19 COPPER	4.6 S N HSE LINE 16.2 FROM HSE FRONT	-	SEWER TEE OPP WATER SHUT OFF

WARNING
IF POWER EQUIPMENT OR EXPLOSIVES ARE TO BE USED FOR EXCAVATION ON THIS PROJECT THE CONTRACTOR MUST:
1) NOTIFY THE GAS COMPANY OF THE PROPOSED LOCATION OF EXCAVATION.
2) TAKE PRECAUTION TO AVOID DAMAGE TO GAS COMPANY INSTALLATIONS.
SEE PROVINCIAL REGULATION 140/92 FOR DETAILS

METRIC
WHOLE NUMBERS INDICATE MILLIMETRES
DECIMALIZED NUMBERS INDICATE METRES

150 WM	WATERMAIN	150 WM	HYDRO	150 WM	WATERMAIN	150 WM	LOCATION APPROVED UNDERGROUND STRUCTURES	B.M. 30-039 ELEV. 233.502m
+	HYDRANT	+	M.T.S.	+	HYDRANT, VALVE	+	NOTE: LOCATION OF UNDERGROUND STRUCTURES AS SHOWN ARE BASED ON THE BEST INFORMATION AVAILABLE BUT NO GUARANTEE IS GIVEN THAT ALL EXISTING UTILITIES ARE SHOWN OR THAT THE GIVEN LOCATIONS ARE EXACT. CONFIRMATION OF EXISTENCE AND EXACT LOCATION OF ALL SERVICES MUST BE OBTAINED FROM THE INDIVIDUAL UTILITIES BEFORE PROCEEDING WITH CONSTRUCTION.	
+	VALVE	+	CONCRETE	+	LAND DRAINAGE SEWER	+		
+	LAND DRAINAGE SEWER	+	ASPHALT	+	WASTE WATER SEWER	+		
+	WASTE WATER SEWER	+	SIDEWALK	+	Q PROFILE	+		
+	MANHOLE	+	PROPERTY LINE	+	NORTH OR WEST GUTTER	+		
+	CATCH BASIN	+	SURVEY BAR	+	SOUTH OR EAST GUTTER	+		
+	CURB INLET	+	DITCH	+	NORTH OR WEST R	+		
+	JUNCTIONS	+	CURB STOP	+	SOUTH OR EAST R	+		
+	STREET REHABILITATION LIMIT	+	TREE	+	NORTH OR WEST DITCH	+		
+	GAS	+	FENCE	+	SOUTH OR EAST DITCH	+		
+	EXISTING	+	LEGEND-PLAN	+	LEGEND-PROFILE	+		

NO.	REVISIONS	DATE	BY	DATE	09.02.04

Stantec Consulting Ltd.
905 Waverley Street, Winnipeg, Manitoba
Tel 204-489-5900 Fax 204-453-9012

DESIGNED BY: J.K.H. CHECKED BY: H.A.K.
DRAWN BY: J.K.H. APPROVED BY: H.A.K.

HOR. SCALE: 1:250
VERTICAL: 1:50

RELEASED FOR CONSTRUCTION: _____
DATE: _____

ENGINEER'S SEAL
ORIGINAL SEALED BY
H.A. KATZ
P. ENG.
08.08.01

CONSULTANT DRAWING NO.
C-202

THE CITY OF WINNIPEG
WATER AND WASTE DEPARTMENT
ENGINEERING DIVISION

2009 WATERMAIN RENEWALS
- CONTRACT 5
HAROLD AVENUE EAST
8.40 EEL OF COLONIAL COURT TO
47.40 WEL OF PRESIDENT'S COURT

SHEET OF 2 OF 14
CAD FILE DRAWING NUMBER
11210c-201-711.dwg
CITY DRAWING NUMBER
D-11764

BID OPPORTUNITY 311-2009

APEGM
Certificate of Authorization
Stantec Consulting Ltd.
No. 1301 Expiry: April 30, 2009