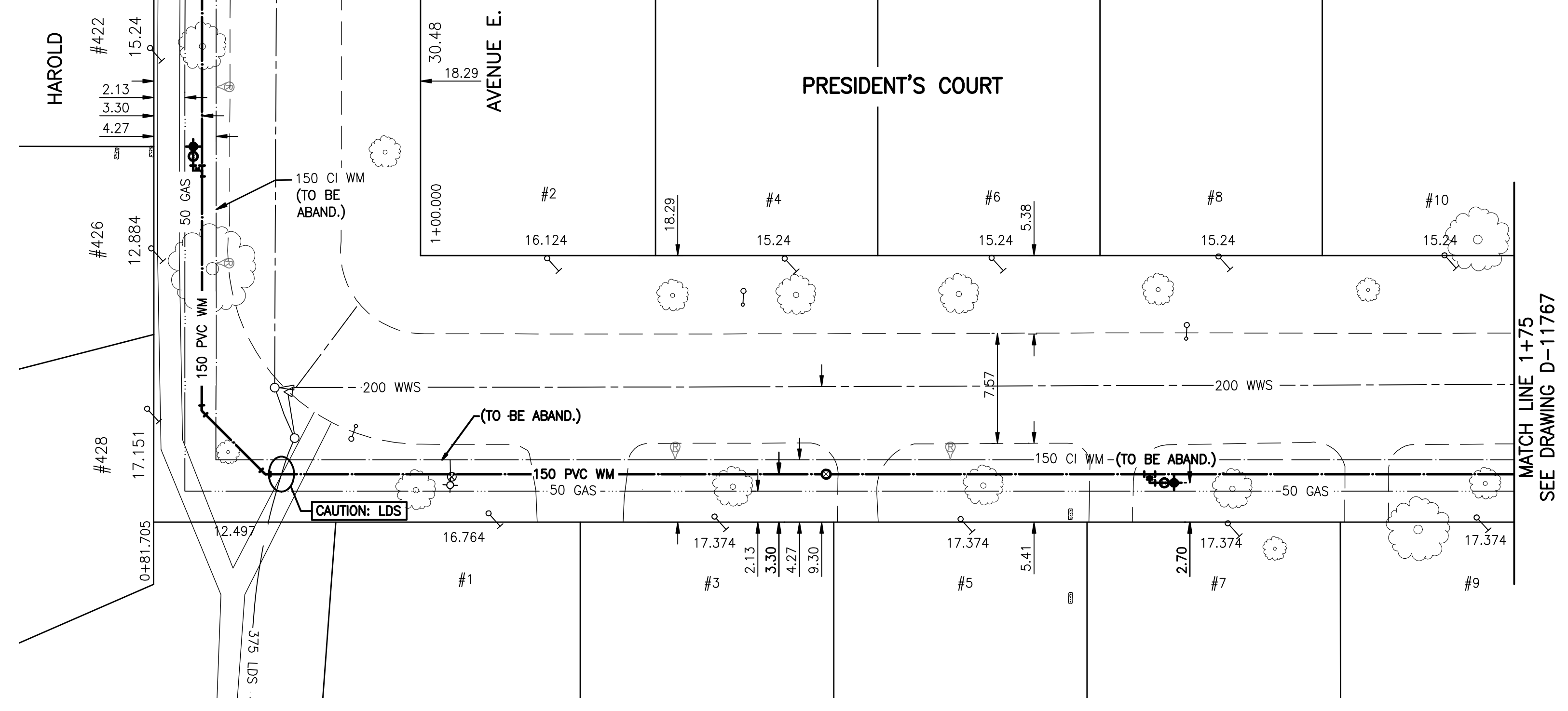


FOR CONTINUATION
SEE DRAWING D-11765



ADDRESS	SIZE (mm) & TYPE (STREET)	SHORT & LONG MEASUREMENT	CORP LOCATION	REMARKS
#1 PRESIDENT'S CT. RESIDENTIAL	19 COPPER	9.1 N.S. HSE LINE 9.0 FROM HSE FRONT	-	SEWER TEE OPP WATER SHUT OFF
#2 PRESIDENT'S CT. RESIDENTIAL	19 COPPER	5.8 S.N. HSE LINE 7.8 FROM HSE FRONT	-	SEWER TEE OPP WATER SHUT OFF
#3 PRESIDENT'S CT. RESIDENTIAL	19 COPPER	5.8 S.N. HSE LINE 7.8 FROM HSE FRONT	-	SEWER TEE OPP WATER SHUT OFF
#4 PRESIDENT'S CT. RESIDENTIAL	19 COPPER	4.9 S.N. HSE LINE 7.0 FROM HSE FRONT	-	SEWER TEE OPP WATER SHUT OFF
#5 PRESIDENT'S CT. RESIDENTIAL	19 COPPER	5.3 N.S. HSE LINE 7.6 FROM HSE FRONT	-	SEWER TEE OPP WATER SHUT OFF
#6 PRESIDENT'S CT. RESIDENTIAL	19 COPPER	5.8 S.N. HSE LINE 6.4 FROM HSE FRONT	-	SEWER TEE OPP WATER SHUT OFF
#7 PRESIDENT'S CT. RESIDENTIAL	19 COPPER	6.4 N.S. HSE LINE 7.9 FROM HSE FRONT	-	SEWER TEE OPP WATER SHUT OFF
#8 PRESIDENT'S CT. RESIDENTIAL	19 COPPER	5.3 S.N. HSE LINE 7.8 FROM HSE FRONT	-	SWR JCT-SEWER TEE OPP WATER SHUT OFF
#9 PRESIDENT'S CT. RESIDENTIAL	19 COPPER	6.1 N.S. HSE LINE 7.8 FROM HSE FRONT	-	-
#10 PRESIDENT'S CT. RESIDENTIAL	19 COPPER	5.3 S.N. HSE LINE 7.3 FROM HSE FRONT	OPP S/C	SEWER TEE OPP WATER SHUT OFF

- NOTES:
- CONTRACTOR TO EXPOSE EXISTING WATERMANS AT TIE IN'S AND CONFIRM INVERTS OF PIPE.
 - CONTRACTOR TO FOLLOW LATEST VERSION OF THE CITY OF WINNIPEG STANDARD CONSTRUCTION SPECIFICATION.
 - WATERMANS TO BE INSTALLED BY TRENCHLESS METHODS.
 - CLASS 3 BACKFILL TO BE USED WITHIN 1 METER OF PAVED SURFACES.
 - CONTRACTOR TO NOTIFY RESIDENTS AT LEAST 24 HOURS PRIOR TO ANY DISRUPTION OF WATER SERVICE.

WARNING
IF POWER EQUIPMENT OR EXPLOSIVES ARE TO BE USED FOR EXCAVATION ON THIS PROJECT THE CONTRACTOR MUST:
1) NOTIFY THE GAS COMPANY OF THE PROPOSED LOCATION OF EXCAVATION.
2) TAKE PRECAUTION TO AVOID DAMAGE TO GAS COMPANY INSTALLATIONS.
SEE PROVINCIAL REGULATION 140/92 FOR DETAILS

METRIC
WHOLE NUMBERS INDICATE MILLIMETRES
DECIMALIZED NUMBERS INDICATE METRES

BENCH MARK: 81R944 - N.E. cor. Kildare Ave. E. & Leola St., Tblt. on top of 0.05m dia. x 2.4m iron pipe, 6.4 m S. of N.L. Kildare Ave. E. & 4.57 m W. of E.L. of Leola St.

NOTE:
STATIONS ALONG E. R. OF PRESIDENT'S CT.

BID OPPORTUNITY 311-2009

APEGM
Certificate of Authorization
Stantec Consulting Ltd.
No. 1301 Expiry: April 30, 2009

EXISTING	LEGEND-PLAN	PROPOSED	EXISTING	LEGEND-PLAN	PROPOSED	EXISTING	LEGEND-PROFILE	PROPOSED
150 WM	WATERMAIN	150 WM	HYDRO	M.T.S.	150 WM	WATERMAIN	150 WM	WATERMAIN
300 LDS	LAND DRAINAGE SEWER	300 LDS	CONCRETE	ASPHALT	300 LDS	LAND DRAINAGE SEWER	300 LDS	LAND DRAINAGE SEWER
250 WWS	WASTE WATER SEWER	250 WWS	SIDEWALK	PROPERTY LINE	250 WWS	WASTE WATER SEWER	250 WWS	WASTE WATER SEWER
MANHOLE	MANHOLE	MANHOLE	PROPERTY LINE	SURVEY BAR	MANHOLE	MANHOLE	MANHOLE	MANHOLE
CATCH BASIN	CATCH BASIN	CATCH BASIN	SURVEY BAR	DITCH	CATCH BASIN	CATCH BASIN	CATCH BASIN	CATCH BASIN
CURB INLET	CURB INLET	CURB INLET	DITCH	CURB STOP	CURB INLET	CURB INLET	CURB INLET	CURB INLET
JUNCTIONS	JUNCTIONS	JUNCTIONS	CURB STOP	TREE	JUNCTIONS	JUNCTIONS	JUNCTIONS	JUNCTIONS
STREET REHABILITATION LIMIT	STREET REHABILITATION LIMIT	STREET REHABILITATION LIMIT	TREE	FENCE	STREET REHABILITATION LIMIT	STREET REHABILITATION LIMIT	STREET REHABILITATION LIMIT	STREET REHABILITATION LIMIT
GAS	GAS	GAS	FENCE		GAS	GAS	GAS	GAS

LOCATION APPROVED UNDERGROUND STRUCTURES
SUPV. U/G STRUCTURES COMMITTEE DATE
NOTE:
LOCATION OF UNDERGROUND STRUCTURES AS SHOWN ARE BASED ON THE BEST INFORMATION AVAILABLE BUT NO GUARANTEE IS GIVEN THAT ALL EXISTING UTILITIES ARE SHOWN OR THAT THE GIVEN LOCATIONS ARE EXACT. CONFIRMATION OF EXISTENCE AND EXACT LOCATION OF ALL SERVICES MUST BE OBTAINED FROM THE INDIVIDUAL UTILITIES BEFORE PROCEEDING WITH CONSTRUCTION.

NO.	REVISIONS	DATE	BY

Stantec Consulting Ltd.
905 Waverley Street, Winnipeg, Manitoba
Tel 204-489-5900 Fax 204-453-9012

DESIGNED BY	J.K.H.	CHECKED BY	H.A.K.
DRAWN BY	J.K.H.	APPROVED BY	H.A.K.
HOR. SCALE:	1:250	RELEASED FOR CONSTRUCTION:	
VERTICAL:	1:50	DATE	

CONSULTANT DRAWING NO. C-204

THE CITY OF WINNIPEG
WATER AND WASTE DEPARTMENT
ENGINEERING DIVISION

2009 WATERMAIN RENEWALS
- CONTRACT 5
PRESIDENT'S COURT
HAROLD AVE EAST TO
75.00>NNL OF HAROLD AVE EAST

SHEET 4 OF 14
CAD FILE DRAWING NUMBER I1210c-204-711.dwg
CITY DRAWING NUMBER D-11766