

SECTION 1 (TYPICAL FOR 60-18\"/>

NOTE RE. PILE REINFORCING:
 VERTICAL REINFORCING TO PROJECT 24\"/>

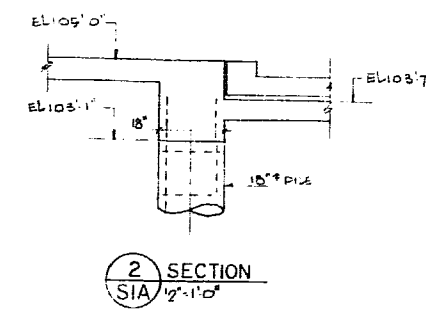
Check interior pile
 tributary area = 17.17 x 17.75 = 305'²
 Dead load:
 5\"/>

Load to interior pile = 301' x 2.975' = 715'²
 circumference of pile
 10' dia = π(5') = 15.7'

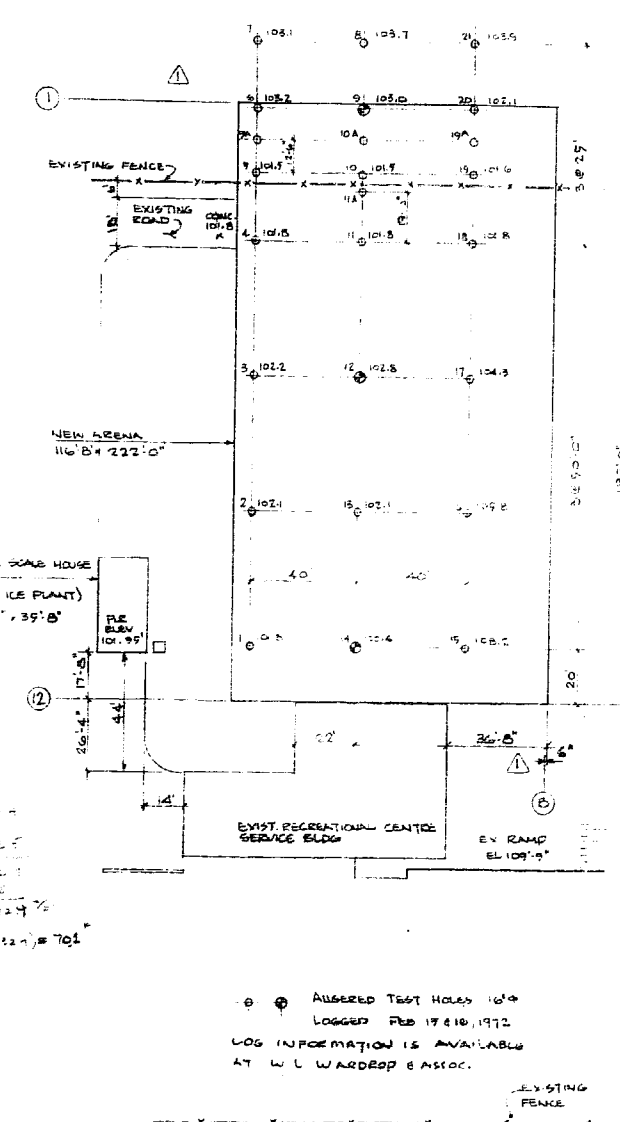
60' p : Effective length req'd = 715' / 1.43 = 500'
 715' = 43.3' x 1.65 = 46.7' x 1.53 = 45.5' x 1.65 = 42.8'

Actual effective length → 45.5' = 37'
 Load of 703'²
 703' / 1.43 = 49.1'
 703' / 1.53 = 45.9'
 703' / 1.65 = 42.6'

Pile cap vol. = π(2')² x 2 x 145' = 628'



SECTION 2 (12\"/>



SITE PLAN AND TEST HOLE LAYOUT
 1\"/>

NOTES
 1. ALL PILING ON THIS DRAWING BY \"PILING CONTRACTOR\"
 2. CONFIRM IN FIELD THIS 2'-0\"/>

NO.	DESCRIPTION	DATE	BY
1	2 PILES ADDED - SCALE HOUSE		
2	MISC. REVISIONS & NOTE ADDED	8/22/72	BD
3	REVISIONS REQUIRED - SW ENTRY PILES EQV. & RELOCATION MINOR	9/12/72	BD
4	REVISIONS REQUIRED - SW ENTRY PILES EQV. & RELOCATION MINOR	9/12/72	BD
5	REVISIONS REQUIRED - SW ENTRY PILES EQV. & RELOCATION MINOR	9/12/72	BD
6	REVISIONS REQUIRED - SW ENTRY PILES EQV. & RELOCATION MINOR	9/12/72	BD
7	REVISIONS REQUIRED - SW ENTRY PILES EQV. & RELOCATION MINOR	9/12/72	BD
8	REVISIONS REQUIRED - SW ENTRY PILES EQV. & RELOCATION MINOR	9/12/72	BD
9	REVISIONS REQUIRED - SW ENTRY PILES EQV. & RELOCATION MINOR	9/12/72	BD
10	REVISIONS REQUIRED - SW ENTRY PILES EQV. & RELOCATION MINOR	9/12/72	BD
11	REVISIONS REQUIRED - SW ENTRY PILES EQV. & RELOCATION MINOR	9/12/72	BD
12	REVISIONS REQUIRED - SW ENTRY PILES EQV. & RELOCATION MINOR	9/12/72	BD

CITY OF WINNIPEG
 COMMUNITY OF EAST KILDONAN

W. L. WARDROP & ASSOCIATES LTD
 ENGINEERING CONSULTANTS
 WINNIPEG THUNDER BAY REGINA

EAST KILDONAN RECREATIONAL CENTRE
 ARENA

PILING PLAN & DETAILS

DESIGNED BY: B.S.E.	DRAWN BY: L.W.	CHECKED BY: L.W.
APPROVED BY: B. OPYSZCZKA	SCALE: AS SHOWN	DATE: FEB 13, 1972
DRAWING NO.: 7185-03-51A		REV: 4

