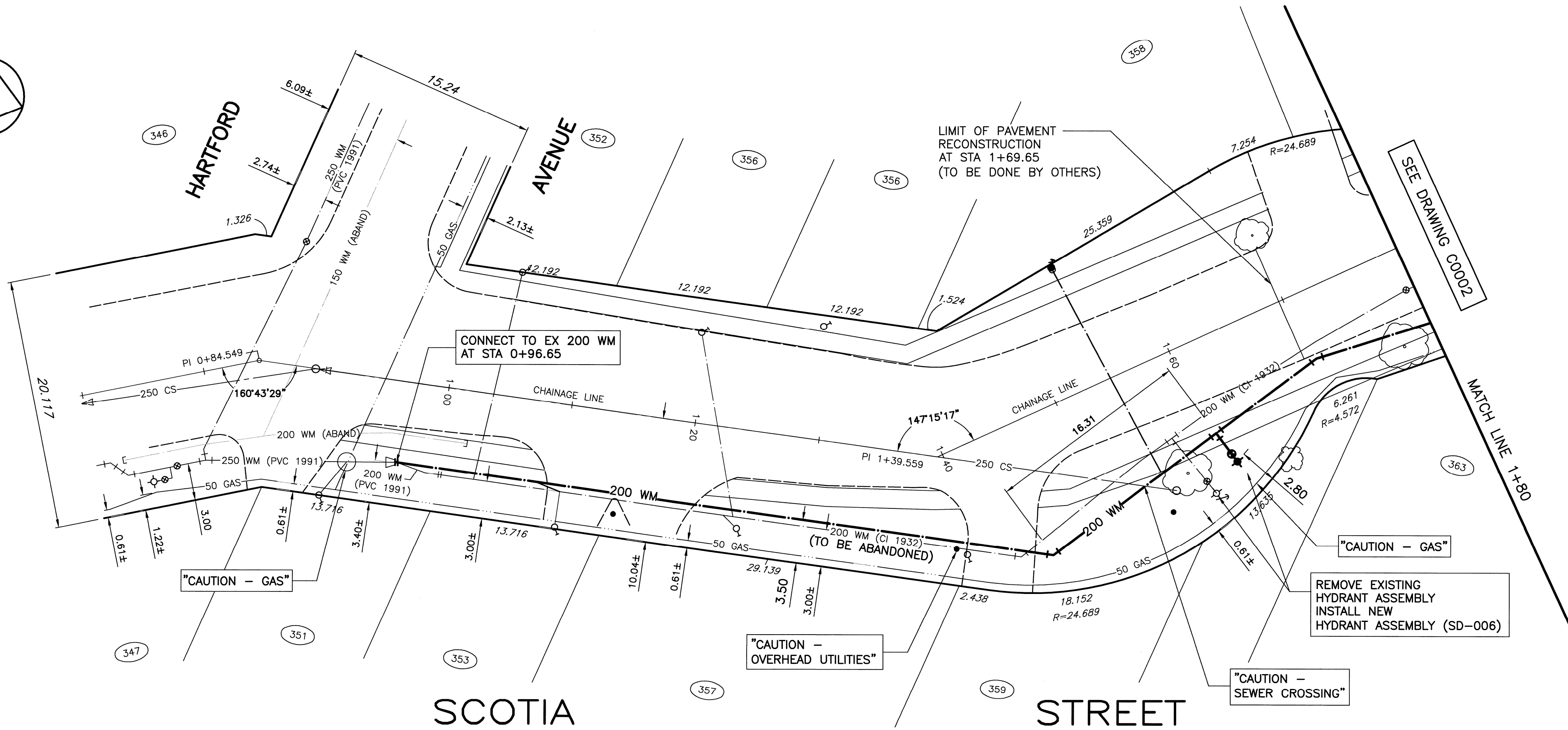
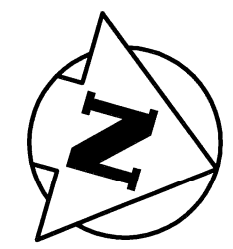


HOUSE NO.	SIZE & TYPE	DISTANCE TO PL	STOP COCK LOCATION		CORPORATION COCK LOCATION	COMMENTS
			SHORT	LONG		
346 SCOTIA ST	20 COP	UNK	?	?	?	
347 SCOTIA ST	20 COP	0.60	6.70m SSL OF HOUSE	20.1m SSL HARTFORD	SAME AS S/C	
351 SCOTIA ST	20 COP	UNK	4.26m NSL OF HOUSE	4.65m N/SPL	1.83m N OF S/C	
352 SCOTIA ST	20 COP	0.00	1.22m NSL OF HOUSE	4.57m NNL HARTFORD	1.52m S OF S/C	
353 SCOTIA ST	20 COP	0.15	2.96m NSL OF HOUSE	10.06m NNL HARTFORD	SAME AS S/C	
354 SCOTIA ST	16 COP	2.74	3.69m SNL OF HOUSE	19.51m NNL HARTFORD	0.91m NNL HOUSE	
356 SCOTIA ST	16 COP	0.91	3.60m NSL OF HOUSE	29.11m NNL HARTFORD	?	
357 SCOTIA ST	20 COP	2.10	3.90m SSL OF HOUSE	24.54m NNL HARTFORD	1.22m S OF S/C	
358 SCOTIA ST	16 LEAD	0.45	2.13m SNL OF HOUSE	5.18m S HYD S BELMONT	?	RENEW WITH 20 mm COP
359 SCOTIA ST	20 COP	2.59	4.41m SSL OF HOUSE	20.57m S HYD S BELMONT	?	
363 SCOTIA ST	?	0.91	0.37m NNL OF HOUSE	4.72m NNL BELMONT	?	

* SERVICE TO BE RENEWED. ALL OTHERS TO BE RECONNECTED



NOTE:
CHAINAGE IS ALONG CONTROL LINE OF SCOTIA STREET

CONSTRUCTION NOTES

1. WATERMAIN TO HAVE 2.5m COVER FROM CENTRELINE OF ROAD
2. ALL CURB REPLACEMENT TO MATCH EXISTING CURB.
3. ALL EXISTING WATERMANS AT CONNECTION LOCATIONS ARE TO HAVE INVERTS VERIFIED PRIOR TO CONSTRUCTION.
4. INSTALL ALL HYDRANTS WITH FLANGE ELEVATION FROM 50mm TO 150mm ABOVE FINISHED GRADE.
5. SALVAGE ALL EXISTING HYDRANT ASSEMBLIES AND VALVES WHEN DIRECTED BY THE CONTRACT ADMINISTRATOR AND RETURN TO THE CITY YARD. ABANDON THE REMAINING VALVES (AND/OR VALVE BOXES) AND HYDRANT ASSEMBLIES.
6. INSTALL WATERMAIN BY TRENCHLESS METHODS UNDER ALL PAVEMENTS, TREES, LIGHT STANDARDS, AND OTHER APPURTENANCES.
7. RENEW ALL LEAD WATER CONNECTIONS UP TO THE PROPERTY LINE WITH 20mm COPPER WATER CONNECTIONS UNLESS RENEWAL SIZE IS OTHERWISE NOTED.
8. ALL VALVES SHALL TURN COUNTER CLOCKWISE TO OPEN WITH BLACK OPERATING NUT.
9. ALL BACKFILL UNDER PAVEMENT SHALL BE CLASS 3.
10. ALL BACKFILL UNDER BOULEVARD SHALL BE CLASS 5.
11. ABANDON SERVICES NO LONGER IN USE WHERE DIRECTED BY CONTRACT ADMINISTRATOR.
12. CONTRACTOR TO NOTIFY BUSINESSES AND RESIDENTS A MINIMUM OF 24 HOURS PRIOR TO ANY DISRUPTION TO WATER SERVICE.



EXISTING	LEGEND-PLAN	PROPOSED	EXISTING	LEGEND-PLAN	PROPOSED	EXISTING	LEGEND-PLAN	PROPOSED
150 WM	WATERMAIN	---	TEE	+	+	TREE	○	○
400 FM	FEEDERMAIN	---	CURB STOP	⊥	⊥	LEGAL DIMENSION	15,240	15,240
300 LDS	LAND DRAINAGE SEWER	---	PLUG	⊕	⊕	SURVEY BAR	⊕	⊕
250 WWS	WASTEWATER SEWER	---	MANHOLE	○	○	TRAFFIC SIGNAL	⊕	⊕
300 CS	COMBINED SEWER	---	CATCHBASIN	□	□	GAS	---	---
200 FCM	FORCEMAIN	---	CURB INLET	▽	▽	HYDRO	---	---
REDUCER	REDUCER	⊕	ZINC ANODE	⊕	⊕	ASPHALT	---	---
HYDRANT	HYDRANT	⊕	HYDRO POLE	⊕	⊕	CURB	---	---
VALVE	VALVE	⊕	LIGHT STANDARD	⊕	⊕	ADDRESS	④11	④11
BEND	BEND	⊕	ANCHOR	⊕	⊕	SIGN	---	---

LOCATION APPROVED UNDERGROUND STRUCTURES

SUPV. U/G STRUCTURES DATE COMMITTEE

NOTE: LOCATION OF UNDERGROUND STRUCTURES AS SHOWN ARE BASED ON THE BEST INFORMATION AVAILABLE. BUT NO GUARANTEE IS GIVEN THAT ALL EXISTING UTILITIES ARE SHOWN OR THAT THE GIVEN LOCATIONS ARE EXACT. CONFIRMATION OF EXISTENCE AND EXACT LOCATION OF ALL SERVICES MUST BE OBTAINED FROM THE INDIVIDUAL UTILITIES BEFORE PROCEEDING WITH CONSTRUCTION.

NO.	REVISIONS	DATE	BY
A	ISSUED FOR TENDER	09.04.30	WTJ
00	ISSUED FOR APPROVAL	09.04.15	

WARDROP PEOPLE, PASSION, PERFORMANCE. TRUSTED GLOBALLY

DESIGNED BY GWC CHECKED BY WTJ

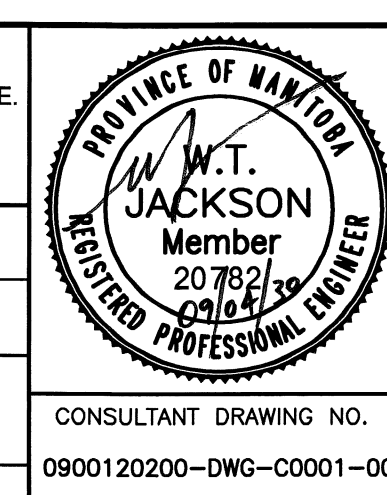
DRAWN BY NL APPROVED BY GS

HOR. SCALE: 1 : 250

VERTICAL: 1 : 50

RELEASED FOR CONSTRUCTION

DATE 09.04.15



THE CITY OF WINNIPEG
WATER AND WASTE DEPARTMENT

2009 - WATERMAIN RENEWALS, CONTRACT 6

SCOTIA STREET
HARTFORD AVENUE TO
6m SOUTH OF BELMONT AVENUE
STA 0+70 TO STA 1+80

CITY DRAWING NUMBER D-11784
SHEET 1 OF 6

C0001

CONSULTANT DRAWING NO. 0900120200-DWG-C0001-00