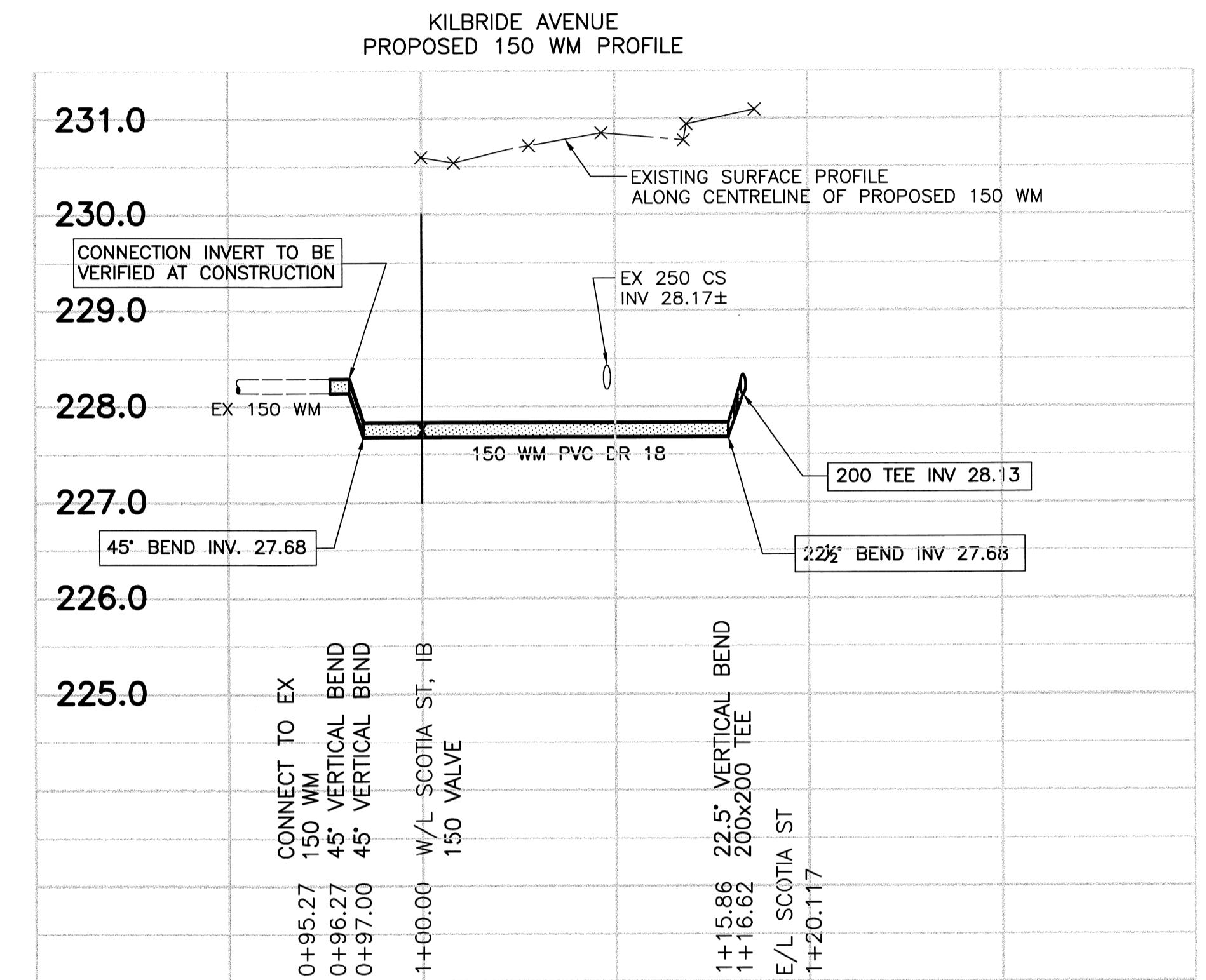


HOUSE NO.	SIZE & TYPE	DISTANCE TO PL	STOP COCK LOCATION		CORPORATION COCK LOCATION	COMMENTS
			SHORT	LONG		
360 SCOTIA ST	20 COP	0.30	ON WL OF HOUSE	7.16m EEL SCOTIA N	1.49m W OF S/C	
362 SCOTIA ST	13 COP	0.45	2.80m SSL OF HOUSE	ON NL BELMONT	SAME AS S/C	
364 SCOTIA ST	13 COP	0.00	1.37m SNL OF HOUSE	19.66m NNL BELMONT	0.46m S OF S/C	
367 SCOTIA ST	13 COP	0.30	OPP. NL OF HOUSE	38.40m SSL KILBRIDE	?	
368 SCOTIA ST	20 COP	0.30	2.68m SNL OF HOUSE	28.65m NNL BELMONT	2.13m S OF S/C	
369 SCOTIA ST	20 COP	0.60	3.87m SNL OF HOUSE	27.43m SSL KILBRIDE	0.30m S OF S/C	
* 371 SCOTIA ST	16 LEAD	1.52	2.80m SNL OF HOUSE	10.06m SSL KILBRIDE	SAME AS S/C	RENEW WITH 20 mm COP
* 372 SCOTIA ST	16 LEAD	0.45	5.03m SNL OF HOUSE	24.38m SSL KILBRIDE	0.61m S OF S/C	RENEW WITH 20 mm COP
* 374 SCOTIA ST	20 LEAD	0.15	3.41m SNL OF HOUSE	5.49m SSL KILBRIDE	SAME AS S/C	RENEW WITH 20 mm COP
375 SCOTIA ST	20 COP	1.07	1.89m SNL OF HOUSE	12.19m SNL KILBRIDE	SAME AS S/C	
* 379 SCOTIA ST	16 LEAD	1.68	4.82m SSL OF HOUSE	8.69m SNL KILBRIDE	0.61m S OF S/C	RENEW WITH 20 mm COP

* SERVICE TO BE RENEWED. ALL OTHERS TO BE RECONNECTED

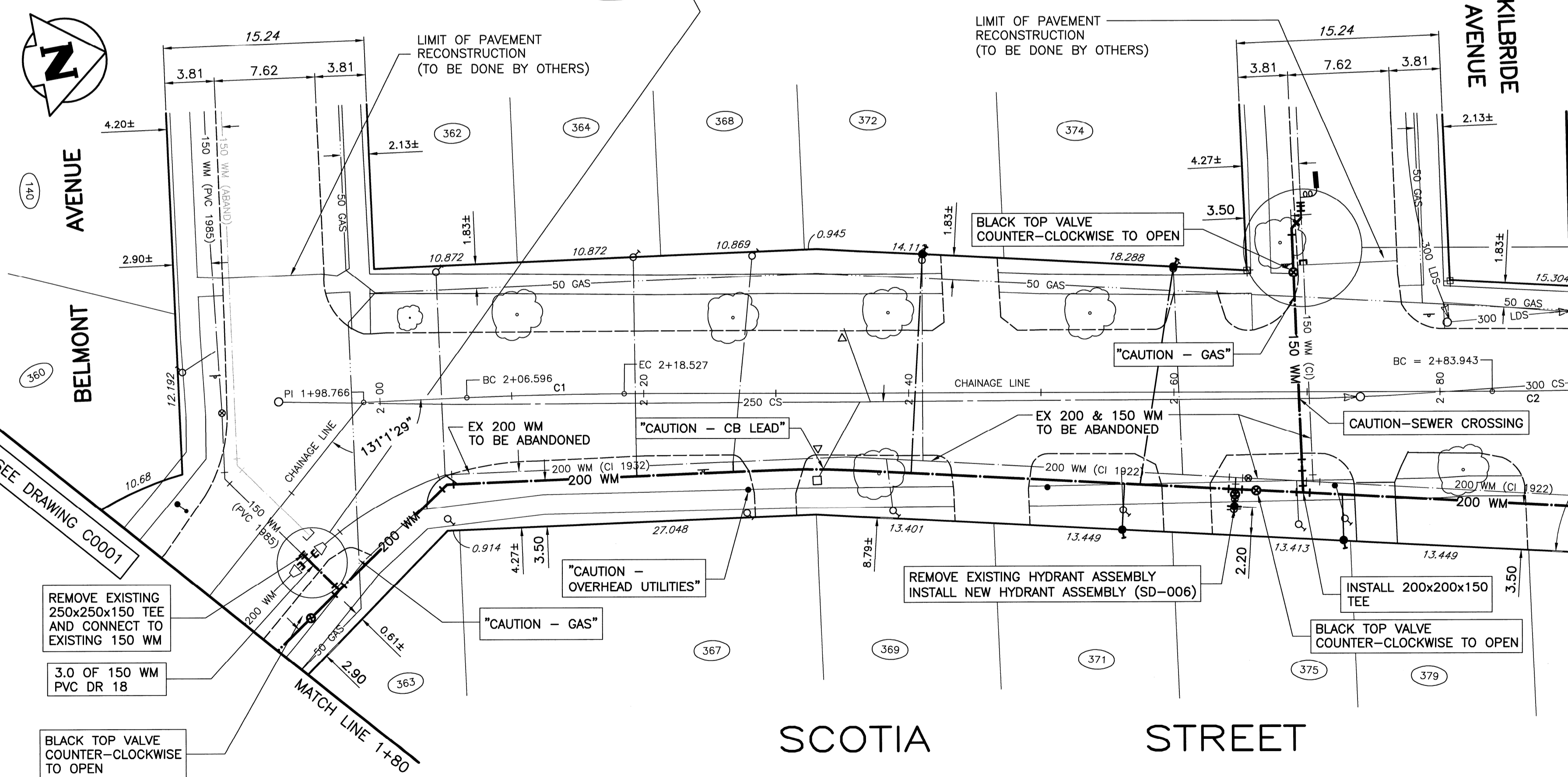


CONSTRUCTION NOTES

1. WATERMAIN TO HAVE 2.5m COVER FROM CENTRELINE OF ROAD
2. ALL CURB REPLACEMENT TO MATCH EXISTING CURB.
3. ALL EXISTING WATERMANS AT CONNECTION LOCATIONS ARE TO HAVE INVERTS VERIFIED PRIOR TO CONSTRUCTION.
4. INSTALL ALL HYDRANTS WITH FLANGE ELEVATION FROM 50mm TO 150mm ABOVE FINISHED GRADE.
5. SALVAGE ALL EXISTING HYDRANT ASSEMBLIES AND VALVES WHEN DIRECTED BY THE CONTRACT ADMINISTRATOR AND RETURN TO THE CITY YARD. ABANDON THE REMAINING VALVES (AND/OR VALVE BOXES) AND HYDRANT ASSEMBLIES.
6. INSTALL WATERMAIN BY TRENCHLESS METHODS UNDER ALL PAVEMENTS, TREES, LIGHT STANDARDS, AND OTHER APPURTENANCES.
7. RENEW ALL LEAD WATER CONNECTIONS UP TO THE PROPERTY LINE WITH 20mm COPPER WATER CONNECTIONS UNLESS RENEWAL SIZE IS OTHERWISE NOTED.
8. ALL VALVES SHALL TURN COUNTER CLOCKWISE TO OPEN WITH BLACK OPERATING NUT.
9. ALL BACKFILL UNDER PAVEMENT SHALL BE CLASS 3.
10. ALL BACKFILL UNDER BOULEVARD SHALL BE CLASS 5.
11. ABANDON SERVICES NO LONGER IN USE WHERE DIRECTED BY CONTRACT ADMINISTRATOR.
12. CONTRACTOR TO NOTIFY BUSINESSES AND RESIDENTS A MINIMUM OF 24 HOURS PRIOR TO ANY DISRUPTION TO WATER SERVICE.

NOTE: CHAINAGE IS ALONG CONTROL LINE OF SCOTIA STREET

CONTROL LINE, CIRCULAR CURVE DATA				
CURVE	RADIUS	TANGENT	DELTA	LENGTH
C1	300.00	5.87	2°18'43"	11.93
C2	300.00	12.50	4°48'16"	24.98

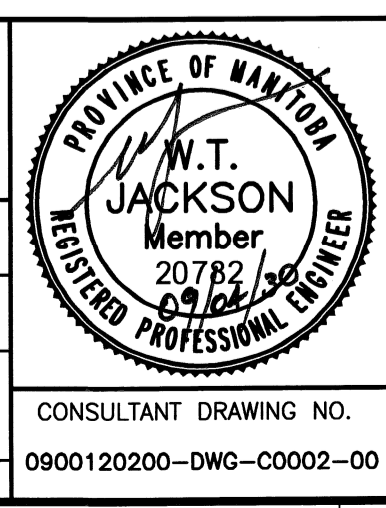


APCGM
Certificate of Authorization
Wardrop Engineering Inc.
No. 195 Expiry: April 30, 2009

SYMBOL	DESCRIPTION	SYMBOL	DESCRIPTION	SYMBOL	DESCRIPTION	SYMBOL	DESCRIPTION
150 WM	WATERMAIN	TEE	TEE	TREE	TREE	LOCATION APPROVED	LOCATION APPROVED
400 FM	FEEDERMAIN	CURB STOP	CURB STOP	LEGAL DIMENSION	LEGAL DIMENSION	UNDERGROUND	UNDERGROUND
300 LDS	LAND DRAINAGE SEWER	PLUG	PLUG	SURVEY BAR	SURVEY BAR	STRUCTURES	STRUCTURES
250 WWS	WASTEWATER SEWER	MANHOLE	MANHOLE	TRAFFIC SIGNAL	TRAFFIC SIGNAL	DATE	DATE
300 CS	COMBINED SEWER	CATCHBASIN	CATCHBASIN	GAS	GAS	NOTE:	NOTE:
200 FCM	FORCEMAIN	CURB INLET	CURB INLET	HYDRO	HYDRO	LOCATION OF UNDERGROUND STRUCTURES AS SHOWN ARE BASED ON THE BEST INFORMATION AVAILABLE. BUT NO GUARANTEE IS GIVEN THAT ALL EXISTING UTILITIES ARE EXACT. CORROSION OF EXISTENCE AND EXACT LOCATION OF ALL SERVICES MUST BE OBTAINED FROM THE INDIVIDUAL UTILITIES BEFORE PROCEEDING WITH CONSTRUCTION.	DATE
REDUCER	REDUCER	ZINC ANODE	ZINC ANODE	ASPHALT	ASPHALT		
HYDRANT	HYDRANT	HYDRO POLE	HYDRO POLE	CURB	CURB		
VALVE	VALVE	LIGHT STANDARD	LIGHT STANDARD	ADDRESS	ADDRESS		
BEND	BEND	ANCHOR	ANCHOR	SIGN	SIGN		
EXISTING	LEGEND-PLAN	PROPOSED	LEGEND-PLAN	PROPOSED	EXISTING	LEGEND-PLAN	PROPOSED

NO.	REVISIONS	DATE	BY
A	ISSUED FOR TENDER	09.04.30	WTJ
00	ISSUED FOR APPROVAL	09.04.15	

DESIGNED BY	CHECKED BY	DRAWN BY	APPROVED BY
GWC	WTJ	NL	GS



THE CITY OF WINNIPEG
WATER AND WASTE DEPARTMENT

2009 - WATERMAIN RENEWALS, CONTRACT 6

SCOTIA STREET
6m SOUTH OF BELMONT AVENUE TO
9m NORTH OF KILBRIDE AVENUE
STA 1+80 TO STA 2+90

CITY DRAWING NUMBER
D-11785
SHEET 2 OF 6
C0002