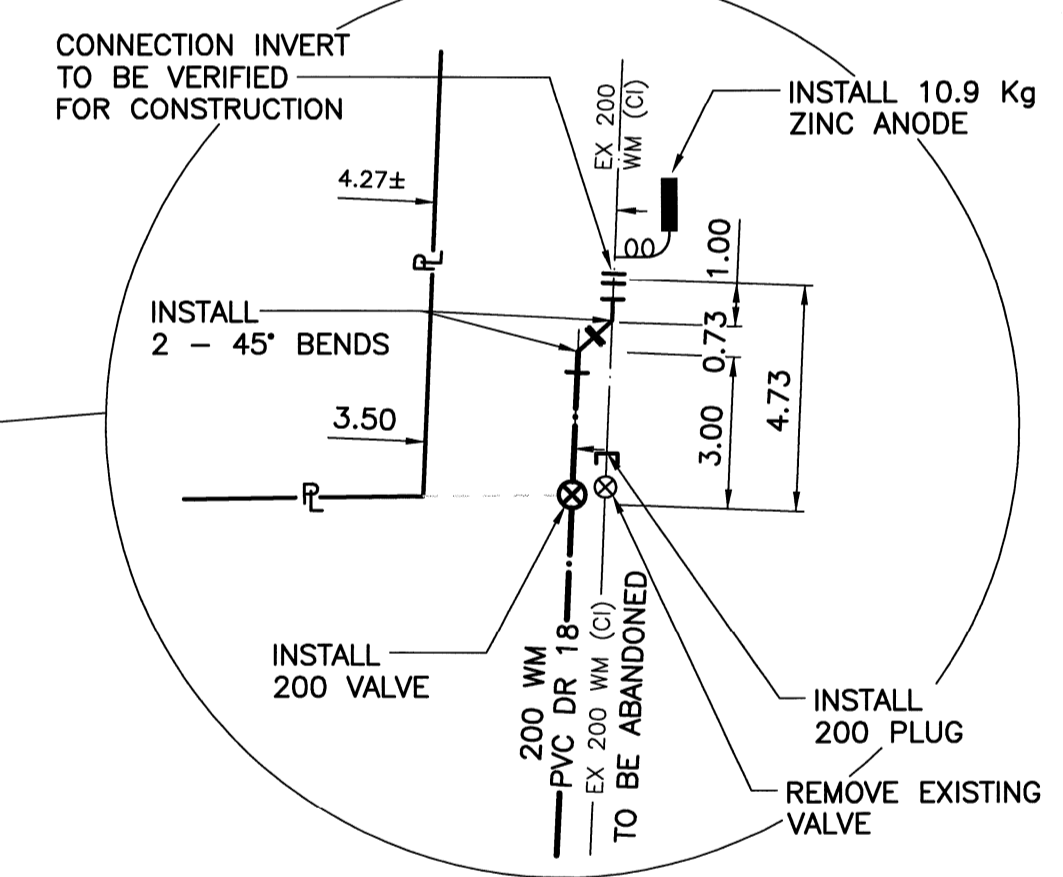
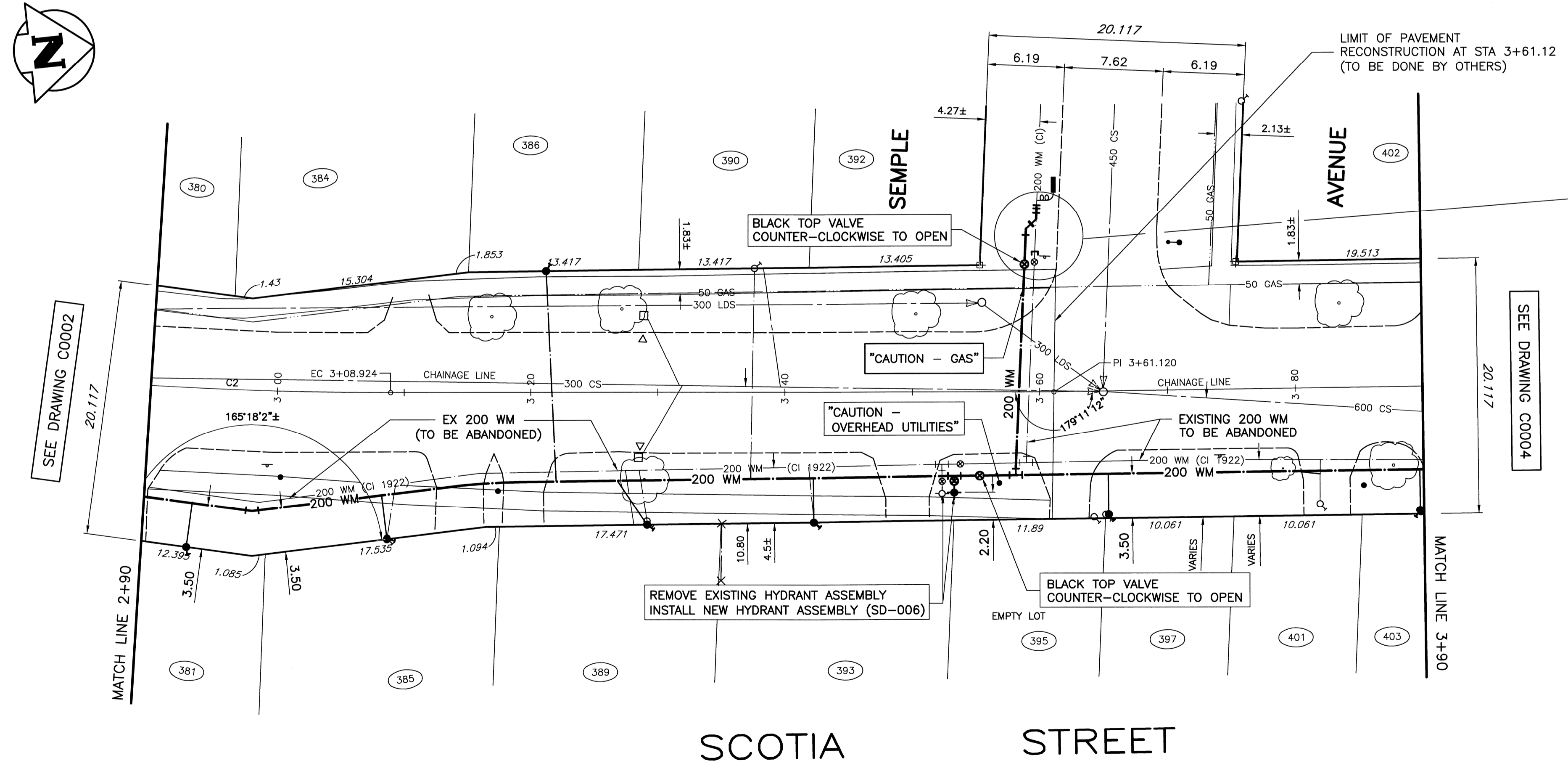


- CONSTRUCTION NOTES**
1. WATERMAIN TO HAVE 2.5m COVER FROM CENTRELINE OF ROAD
 2. ALL CURB REPLACEMENT TO MATCH EXISTING CURB.
 3. ALL EXISTING WATERMANS AT CONNECTION LOCATIONS ARE TO HAVE INVERTS VERIFIED PRIOR TO CONSTRUCTION.
 4. INSTALL ALL HYDRANTS WITH FLANGE ELEVATION FROM 50mm TO 150mm ABOVE FINISHED GRADE.
 5. SALVAGE ALL EXISTING HYDRANT ASSEMBLIES AND VALVES WHEN DIRECTED BY THE CONTRACT ADMINISTRATOR AND RETURN TO THE CITY YARD. ABANDON THE REMAINING VALVES (AND/OR VALVE BOXES) AND HYDRANT ASSEMBLIES.
 6. INSTALL WATERMAIN BY TRENCHLESS METHODS UNDER ALL PAVEMENTS, TREES, LIGHT STANDARDS, AND OTHER APPURTENANCES.
 7. RENEW ALL LEAD WATER CONNECTIONS UP TO THE PROPERTY LINE WITH 20mm COPPER WATER CONNECTIONS UNLESS RENEWAL SIZE IS OTHERWISE NOTED.
 8. ALL VALVES SHALL TURN COUNTER CLOCKWISE TO OPEN WITH BLACK OPERATING NUT.
 9. ALL BACKFILL UNDER PAVEMENT SHALL BE CLASS 3.
 10. ALL BACKFILL UNDER BOULEVARD SHALL BE CLASS 5.
 11. ABANDON SERVICES NO LONGER IN USE WHERE DIRECTED BY CONTRACT ADMINISTRATOR.
 12. CONTRACTOR TO NOTIFY BUSINESSES AND RESIDENTS A MINIMUM OF 24 HOURS PRIOR TO ANY DISRUPTION TO WATER SERVICE.

HOUSE NO.	SIZE & TYPE	DISTANCE TO PL	STOP COCK LOCATION		CORPORATION COCK LOCATION	COMMENTS
			SHORT	LONG		
380 SCOTIA ST	20 COP	0.30	OPP. NL OF HOUSE	?	OPP. S/C	
381 SCOTIA ST	20 LEAD	UNK	?	?	SAME AS S/C	RENEW WITH 20 mm COP
384 SCOTIA ST	20 COP	UNK	?	?	0.24 N OF S/C	
385 SCOTIA ST	20 LEAD	1.37	0.85m SNL OF HOUSE	28.19m>NNL KILBRIDE	1.22m N OF S/C	RENEW WITH 20 mm COP
386 SCOTIA ST	20 LEAD	UNK	3.35m NSL OF HOUSE	?	0.46m S OF S/C	RENEW WITH 20 mm COP
389 SCOTIA ST	20 LEAD	UNK	4.27m SNL OF HOUSE	23.16m SSL OF HYD	0.61m S OF S/C	RENEW WITH 20 mm COP
390 SCOTIA ST	20 COP	0.00	2.19m SNL OF HOUSE	17.68m SSL SEMPLE	0.30M S OF S/C	
392 SCOTIA ST	20 COP	0.30	1.71m WEL OF HOUSE	?	?	
393 SCOTIA ST	16 LEAD	0.00	5.94m NSL OF HOUSE	10.06m S 1ST HYD S SEMPLE	0.37m S OF S/C	RENEW WITH 20 mm COP
397 SCOTIA ST	16 LEAD	0.30	2.29m SSL OF HOUSE	10.52m SNL SEMPLE	?	RENEW WITH 20 mm COP
401 SCOTIA ST	20 COP	0.91	2.83m SNL OF HOUSE	6.25m>NNL SEMPLE	?	
402 SCOTIA ST	16 COP	0.15	4.88m WEL OF HOUSE	12.65m>NNL SCOTIA	?	
403 SCOTIA ST	16 LEAD	0.15	1.28m NSL OF HOUSE	14.17m>NNL SEMPLE	?	RENEW WITH 20 mm COP

* SERVICE TO BE RENEWED. ALL OTHERS TO BE RECONNECTED



NOTE: CHAINAGE IS ALONG CONTROL LINE OF SCOTIA STREET

CONTROL LINE, CIRCULAR CURVE DATA				
CURVE	RADIUS	TANGENT	DELTA	LENGTH
C2	300.00	12.50	4°46'16"	24.98

EXISTING	LEGEND-PLAN	PROPOSED	EXISTING	LEGEND-PLAN	PROPOSED	EXISTING	LEGEND-PLAN	PROPOSED
150 WM	WATERMAIN	---	TEE	+	+	TREE	○	○
400 FM	FEEDERMAIN	---	CURB STOP	■	■	LEGAL DIMENSION	15.240	15.240
300 LDS	LAND DRAINAGE SEWER	---	PLUG	■	■	SURVEY BAR	⊕	⊕
250 WWS	WASTEWATER SEWER	---	MANHOLE	○	○	TRAFFIC SIGNAL	⊕	⊕
300 CS	COMBINED SEWER	---	CATCHBASIN	□	□	GAS	—	—
200 FCM	FORCEMAIN	---	CURB INLET	▽	▽	HYDRO	—	—
□	REDUCER	□	ZINC ANODE	▲	▲	ASPHALT	—	—
+	HYDRANT	+	HYDRO POLE	+	+	CURB	—	—
⊕	VALVE	⊕	LIGHT STANDARD	⊕	⊕	ADDRESS	④	④
↵	BEND	↵	ANCHOR	—	—	SIGN	—	—

LOCATION APPROVED UNDERGROUND STRUCTURES

SUPV. U/G STRUCTURES DATE COMMITTEE

NOTE: LOCATION OF UNDERGROUND STRUCTURES AS SHOWN ARE BASED ON THE BEST INFORMATION AVAILABLE. BUT NO GUARANTEE IS GIVEN THAT ALL EXISTING UTILITIES ARE SHOWN OR THAT THE GIVEN LOCATIONS ARE EXACT. CONFIRMATION OF EXISTENCE AND EXACT LOCATION OF ALL SERVICES MUST BE OBTAINED FROM THE INDIVIDUAL UTILITIES BEFORE PROCEEDING WITH CONSTRUCTION.

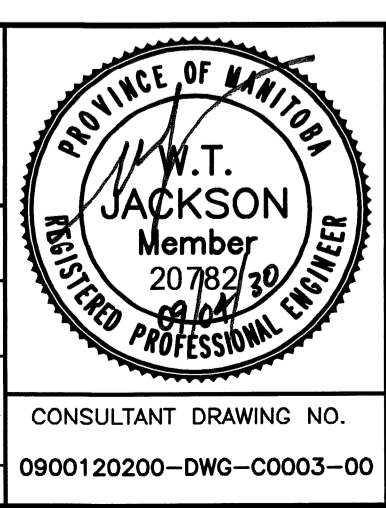
A	ISSUED FOR TENDER	09.04.30	WTJ
00	ISSUED FOR APPROVAL	09.04.15	
NO.	REVISIONS	DATE	BY

WARDROP PEOPLE. PASSION. PERFORMANCE. TRUSTED GLOBALLY.

DESIGNED BY: GWC CHECKED BY: WTJ
 DRAWN BY: NL APPROVED BY: GS

HOR. SCALE: 1 : 250
 VERTICAL: 1 : 50

RELEASER FOR CONSTRUCTION: [Signature]
 DATE: 09.04.15



THE CITY OF WINNIPEG
 WATER AND WASTE DEPARTMENT

2009 - WATERMAIN RENEWALS, CONTRACT 6

SCOTIA STREET
 9m NORTH OF KILBRIDE AVENUE
 14m NORTH OF SEMPLE AVENUE
 STA 2+90 TO STA 3+90

CITY DRAWING NUMBER: D-11786
 SHEET 3 OF 6

CONSULTANT DRAWING NO.: 0900120200-DWG-C0003-00

C0003

