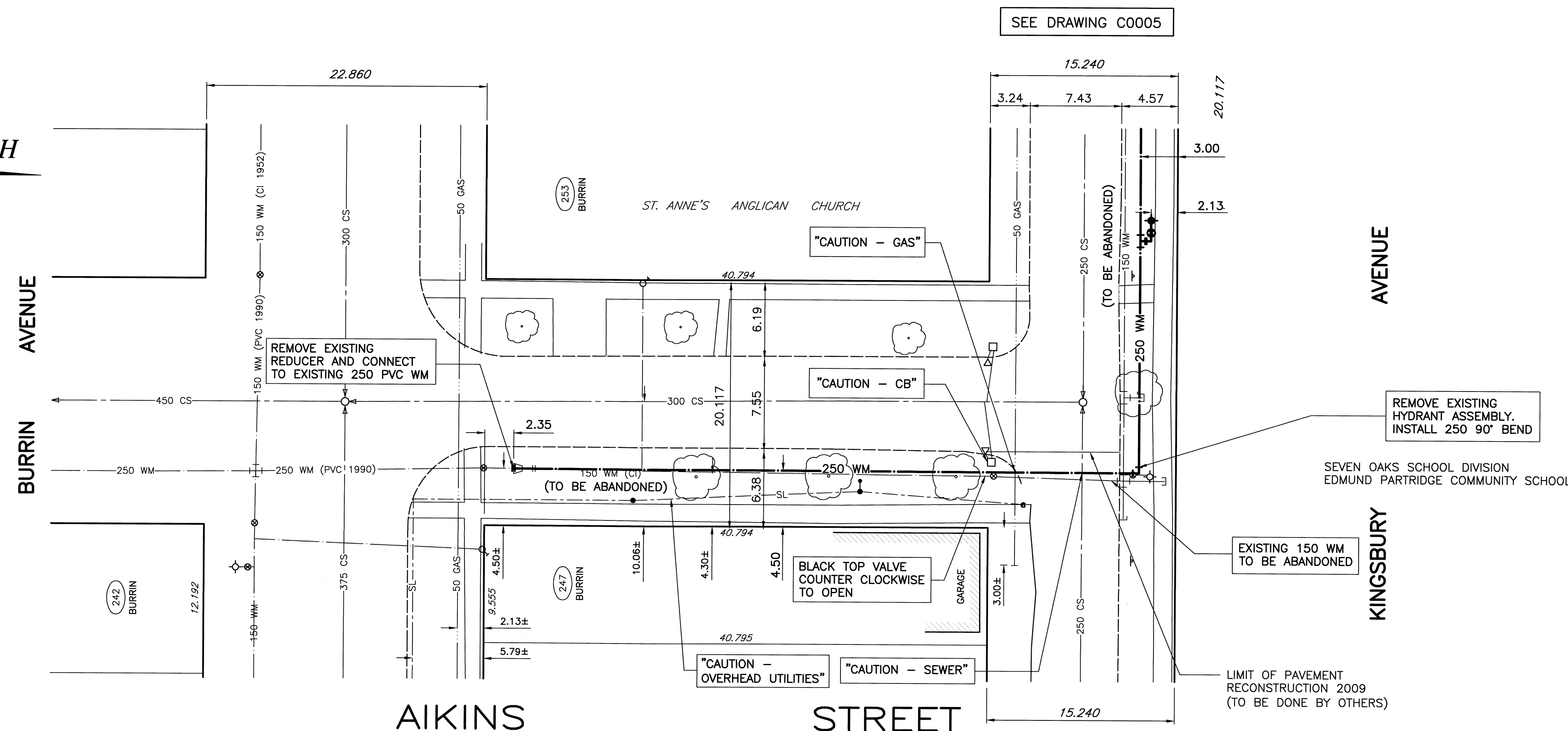


HOUSE NO.	SIZE & TYPE	DISTANCE TO PL	STOP COCK LOCATION		CORPORATION COCK LOCATION	COMMENTS
			SHORT	LONG		
247 BURRIN AV	20 COP	0.15	0.61m ENL OF HOUSE	1.95m EEL AKINS	0.76 W OF S/C	
253 BURRIN AV	20 COP	0.27	8.99m SNL OF BLDG	28.04m SSL KINGSBURY	?	
253 BURRIN AV	20 COP	UNK	0.15m NSL OF HOUSE	20.03m NNL BURRIN	?	CUT OFF JULY/95



CONSTRUCTION NOTES

1. WATERMAIN TO HAVE 2.5m COVER FROM CENTRELINE OF ROAD
2. ALL CURB REPLACEMENT TO MATCH EXISTING CURB.
3. ALL EXISTING WATERMANS AT CONNECTION LOCATIONS ARE TO HAVE INVERTS VERIFIED PRIOR TO CONSTRUCTION.
4. INSTALL ALL HYDRANTS WITH FLANGE ELEVATION FROM 50mm to 150mm ABOVE FINISHED GRADE.
5. SALVAGE ALL EXISTING HYDRANT ASSEMBLIES AND VALVES WHEN DIRECTED BY THE CONTRACT ADMINISTRATOR AND RETURN TO THE CITY YARD. ABANDON THE REMAINING VALVES (AND/OR VALVE BOXES) AND HYDRANT ASSEMBLIES.
6. INSTALL WATERMAIN BY TRENCHLESS METHODS UNDER ALL PAVEMENTS, TREES, LIGHT STANDARDS, AND OTHER APPURTENANCES.
7. RENEW ALL LEAD WATER CONNECTIONS UP TO THE PROPERTY LINE WITH 20mm COPPER WATER CONNECTIONS UNLESS RENEWAL SIZE IS OTHERWISE NOTED.
8. ALL VALVES SHALL TURN COUNTER CLOCKWISE TO OPEN WITH BLACK OPERATING NUT.
9. ALL BACKFILL UNDER PAVEMENT SHALL BE CLASS 3.
10. ALL BACKFILL UNDER BOULEVARD SHALL BE CLASS 5.
11. ABANDON SERVICES NO LONGER IN USE WHERE DIRECTED BY CONTRACT ADMINISTRATOR.
12. CONTRACTOR TO NOTIFY BUSINESSES AND RESIDENTS A MINIMUM OF 24 HOURS PRIOR TO ANY DISRUPTION TO WATER SERVICE.

GENERAL NOTES

1. CHAINAGE IS ALONG CENTRE LINE OF AIKINS RIGHT-OF-WAY.
2. STATION 1+00 = NORTH PROPERTY LINE OF BURRIN.



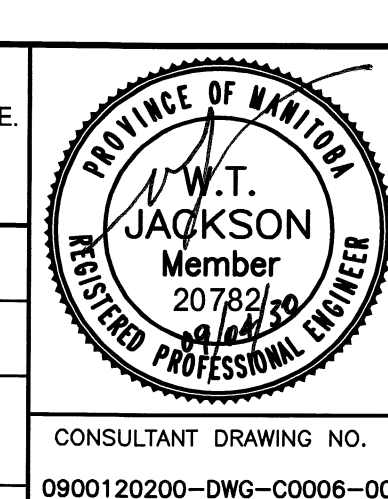
EXISTING	LEGEND-PLAN	PROPOSED	EXISTING	LEGEND-PLAN	PROPOSED	EXISTING	LEGEND-PLAN	PROPOSED
150 WM	WATERMAIN	---	TEE	+	+	TREE	○	○
400 FM	FEEDERMAIN	---	CURB STOP	□	□	LEGAL DIMENSION	15.240	15.240
300 LDS	LAND DRAINAGE SEWER	---	PLUG	○	○	SURVEY BAR	+	+
250 WWS	WASTEWATER SEWER	---	MANHOLE	○	○	TRAFFIC SIGNAL	+	+
300 CS	COMBINED SEWER	---	CATCHBASIN	□	□	GAS	+	+
200 FCM	FORCEMAIN	---	CURB INLET	▽	▽	HYDRO	+	+
□	REDUCER	□	ZINC ANODE	+	+	ASPHALT	+	+
⊕	HYDRANT	⊕	HYDRO POLE	+	+	CURB	+	+
⊙	VALVE	⊙	LIGHT STANDARD	⊙	⊙	ADDRESS	66	66
⋄	BEND	⋄	ANCHOR	+	+	SIGN	+	+

LOCATION APPROVED UNDERGROUND STRUCTURES	SUPV. U/G STRUCTURES COMMITTEE	DATE

NOTE: LOCATION OF UNDERGROUND STRUCTURES AS SHOWN ARE BASED ON THE BEST INFORMATION AVAILABLE. BUT NO GUARANTEE IS GIVEN THAT ALL EXISTING UTILITIES ARE SHOWN OR THAT THE GIVEN LOCATIONS ARE EXACT. CONFIRMATION OF EXISTENCE AND EXACT LOCATION OF ALL SERVICES MUST BE OBTAINED FROM THE INDIVIDUAL UTILITIES BEFORE PROCEEDING WITH CONSTRUCTION.

B.M. ELEV.	DATE	BY

DESIGNED BY	CHECKED BY
GWC	WTJ
DRAWN BY	APPROVED BY
NL	GS
ISSUED FOR TENDER	ISSUED FOR APPROVAL
09.04.30	09.04.15
NO. REVISIONS	DATE
A	09.04.15



THE CITY OF WINNIPEG
WATER AND WASTE DEPARTMENT

2009 - WATERMAIN RENEWALS, CONTRACT 6

AIKINS STREET (EAST)
BURRIN AVENUE TO
KINGSBURY AVENUE

CITY DRAWING NUMBER
D-11789
SHEET 6 OF 6
C0006

CONSULTANT DRAWING NO.
0900120200-DWG-C0006-00