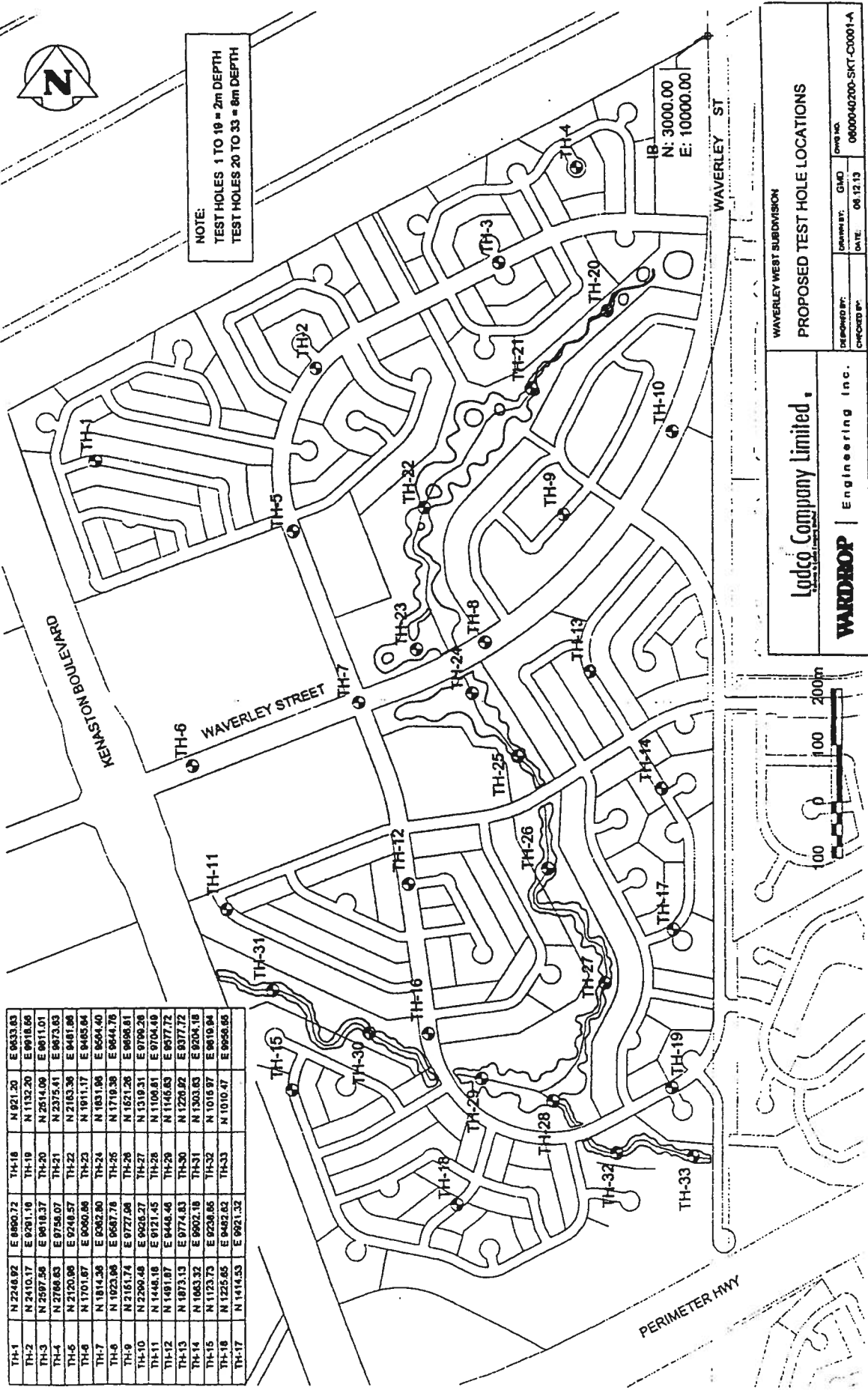




NOTE:
 TEST HOLES 1 TO 19 = 2m DEPTH
 TEST HOLES 20 TO 33 = 8m DEPTH



TH-1	N 2246.92	E 8690.72	TH-18	N 821.20	E 9833.83
TH-2	N 2410.17	E 9291.16	TH-19	N 1132.20	E 9918.66
TH-3	N 2597.50	E 9818.37	TH-20	N 2514.09	E 9011.01
TH-4	N 2786.83	E 9758.07	TH-21	N 2375.41	E 9673.83
TH-5	N 2120.06	E 9249.57	TH-22	N 2183.36	E 8481.98
TH-6	N 1701.87	E 9090.89	TH-23	N 1911.17	E 8465.64
TH-7	N 1814.38	E 9382.80	TH-24	N 1831.98	E 8544.40
TH-8	N 1923.96	E 9687.78	TH-25	N 1719.38	E 9044.76
TH-9	N 2161.74	E 9727.98	TH-26	N 1621.26	E 9696.81
TH-10	N 2290.48	E 9828.27	TH-27	N 1319.31	E 9799.26
TH-11	N 1448.16	E 9121.45	TH-28	N 1100.81	E 9704.49
TH-12	N 1491.87	E 9448.48	TH-29	N 1146.83	E 9877.72
TH-13	N 1873.13	E 9774.83	TH-30	N 1226.92	E 9377.72
TH-14	N 1083.32	E 9602.18	TH-31	N 1303.63	E 9264.18
TH-15	N 1237.73	E 9238.85	TH-32	N 1016.97	E 9619.94
TH-16	N 1225.65	E 9482.82	TH-33	N 1010.47	E 9958.95
TH-17	N 1414.53	E 9921.32			

WAVERLEY WEST SUBDIVISION
 PROPOSED TEST HOLE LOCATIONS

Lodco Company Limited,
 100 Waverley Street, Waverley, Vic 3102

WARDROP Engineering Inc.
 100 Waverley Street, Waverley, Vic 3102

DESIGNED BY: GMD
 CHECKED BY: GMD
 DATE: 06.12.13
 DWG NO: 0600040200-SKT-C0001-A

DYREGROV CONSULTANTS
 CONSULTING GEOTECHNICAL ENGINEERS

**WAVERLEY WEST SUBDIVISION
 TEST HOLE LOCATION PLAN**

DYREGROV CONSULTANTS		Logged/Dwn.: TH Checked: AOD	Test Hole No. 20	Project No. 272908
PROJECT: WAVERLEY WEST SUBDIVISION CLIENT: WARDROP			DATE OF INVEST : January 31/07 DRILL : SUBTERRANEAN 400 mm AUGER	

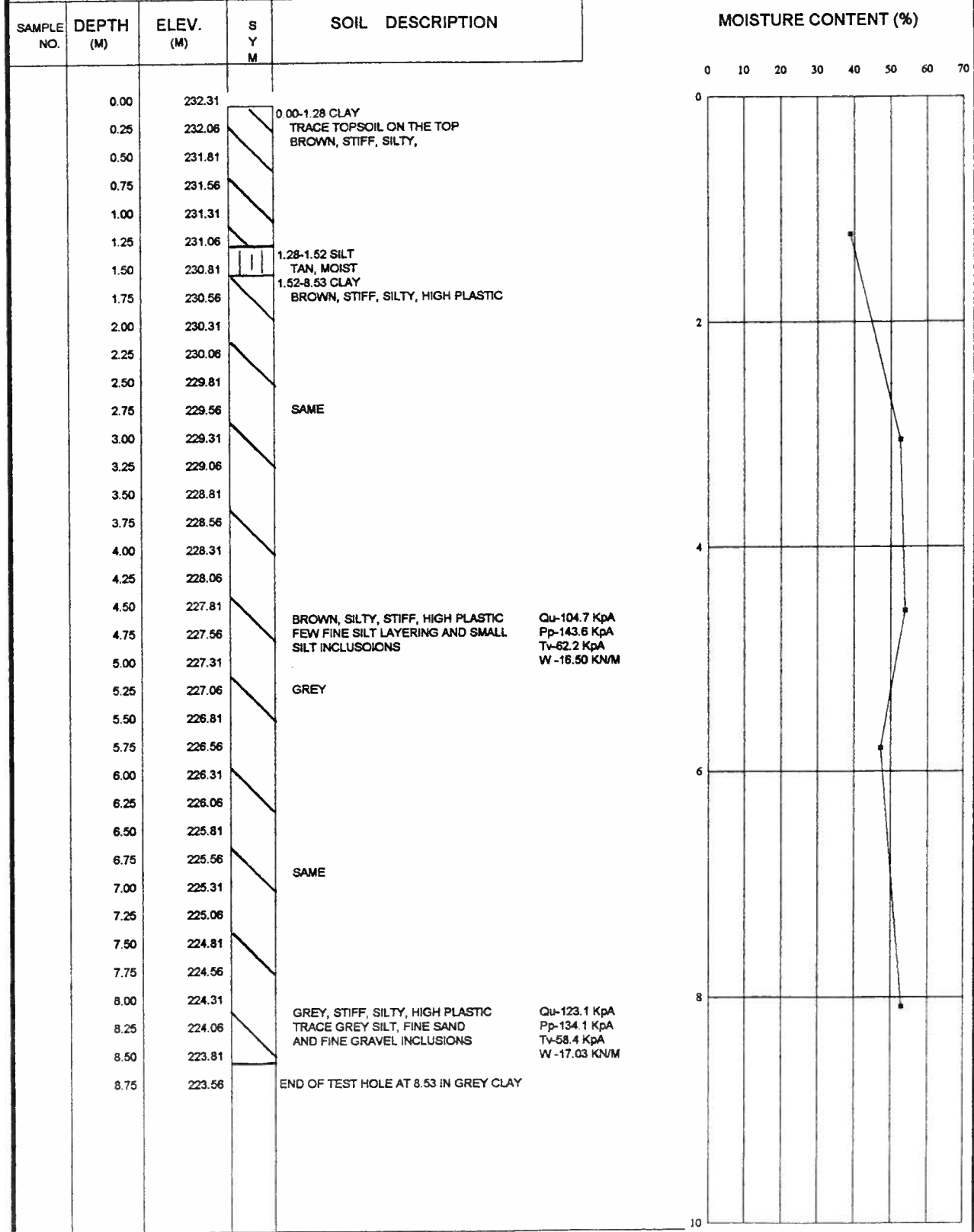


FIGURE 20

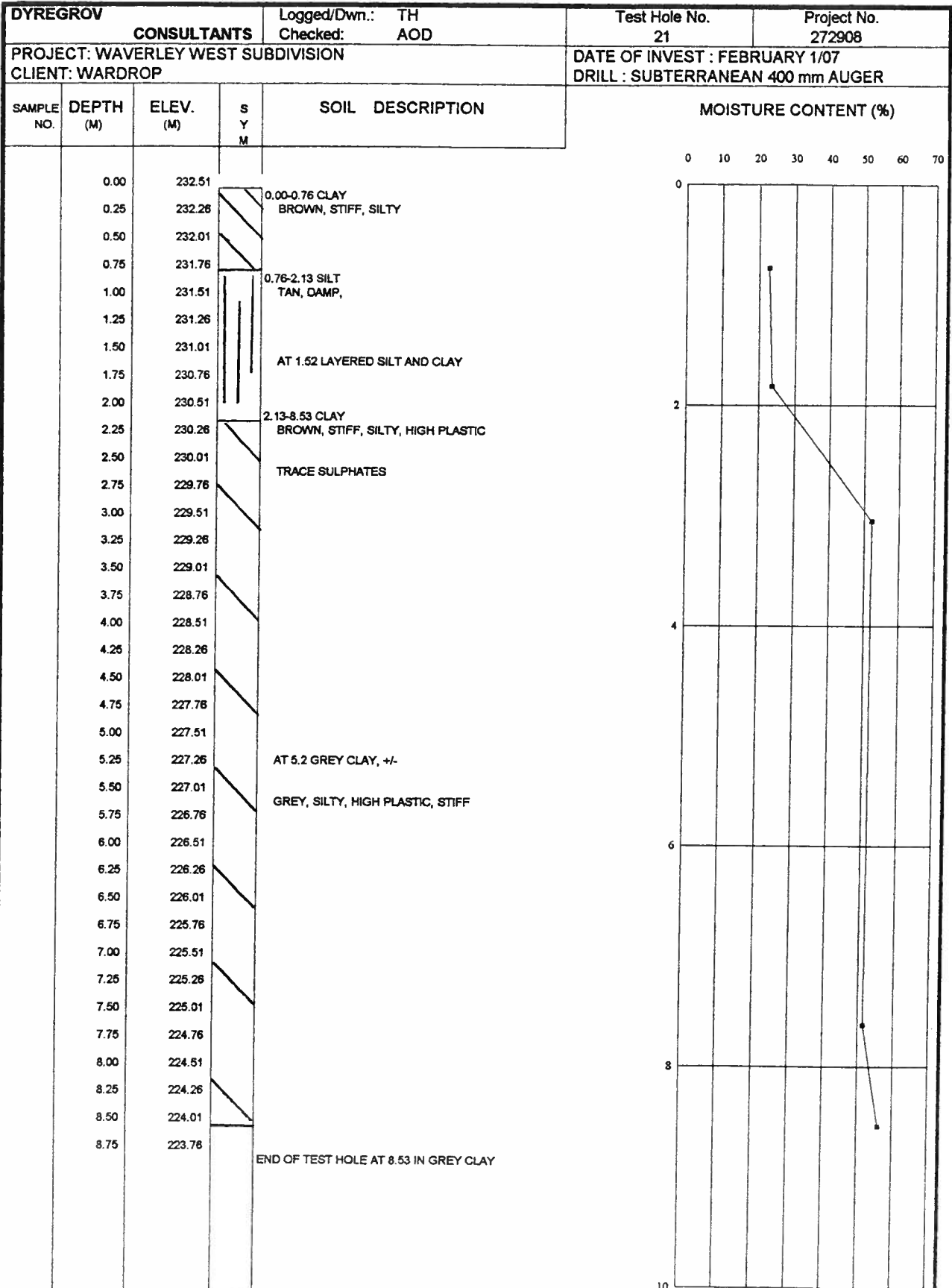


FIGURE 21