

B SIZE 11" x 17" (279mm x 432mm)

PLOT: 7/30/2009 4:27:56 PM

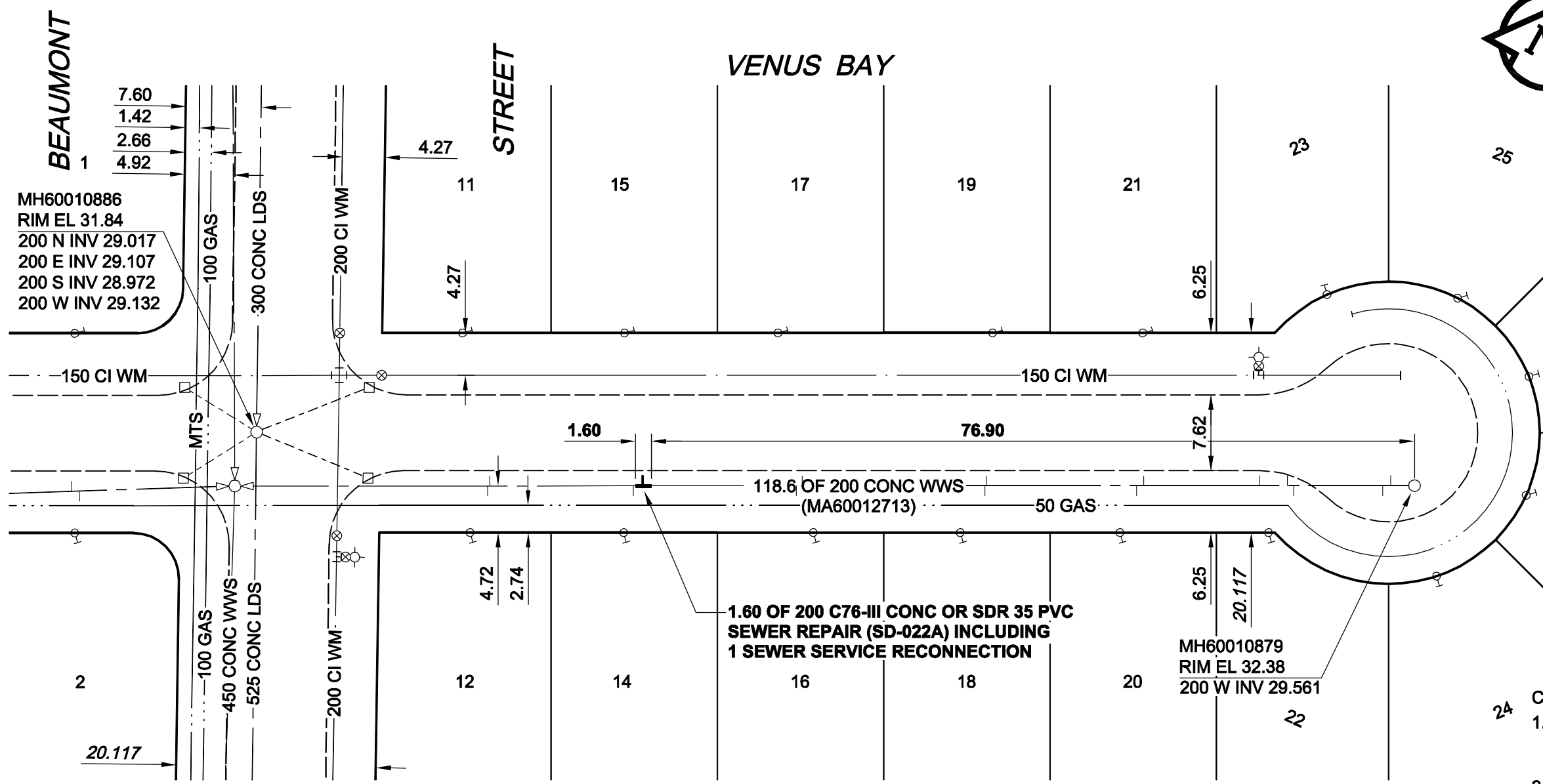
FILE NAME: D265-244-02\_01-C-1032\_RX.dwg Saved By: berarok



**SEWER JUNCTION INFORMATION\***

REF. MH	DIST FROM REF. MH	SIZE	CLOCK AT
MH60010879	2.40	100Ø	02
MH60010879	3.20	100Ø	10
MH60010879	12.20	100Ø	10
MH60010879	12.80	100Ø	02
MH60010879	15.60	100Ø	02
MH60010879	27.30	100Ø	03
MH60010879	28.00	100Ø	09
MH60010879	43.10	100Ø	01
MH60010879	43.30	100Ø	10
MH60010879	61.70	100Ø	02
MH60010879	62.30	100Ø	09
MH60010879	77.80	100Ø	02
MH60010879	78.70	100Ø	09
MH60010879	93.20	100Ø	02
MH60010879	93.40	100Ø	10

\*JUNCTION INFORMATION FROM VIDEO INSPECTION



**1.60 OF 200 C76-III CONC OR SDR 35 PVC SEWER REPAIR (SD-022A) INCLUDING 1 SEWER SERVICE RECONNECTION**

- CONSTRUCTION NOTES:**
1. CONTRACTOR TO VERIFY LIMITS OF SEWER REPAIRS PRIOR TO EXCAVATION BY MEANS OF VIDEO INSPECTION.
  2. CONTRACTOR TO PROVIDE VIDEO INSPECTION OF SEWER SERVICES WITHIN LIMITS OF REPAIR IN PRESENCE OF CONTRACT ADMINISTRATOR TO DETERMINE IF SERVICE RENEWAL IS REQUIRED.
  3. ALL BACKFILL TO BE CLASS 5 BACKFILL UNDER BOULEVARDS AND CLASS 3 UNDER OR WITHIN 1.0m OF PAVEMENTS AND SIDEWALKS.

**WARNING**  
 IF POWER EQUIPMENT OR EXPLOSIVES ARE TO BE USED FOR EXCAVATION ON THIS PROJECT, THE CONTRACTOR MUST:  
 1) NOTIFY THE GAS COMPANY OF THE PROPOSED LOCATION OF EXCAVATION.  
 2) TAKE PRECAUTION TO AVOID DAMAGE TO GAS COMPANY INSTALLATIONS.  
 SEE PROVINCIAL REGULATION 140/92 FOR DETAILS

**METRIC**  
 WHOLE NUMBERS INDICATE MILLIMETRES  
 DECIMALIZED NUMBERS INDICATE METRES

**AECOM**  
 Certificate of Authorization  
 AECOM Canada Ltd.  
 No. 4671 Date: 09/07/29

BID OPPORTUNITY NO. 374-2009

AECOM REVIEW DRAFT CHK ADL

**LOCATION APPROVED UNDERGROUND STRUCTURES**

SUPR. U/G STRUCTURES COMMITTEE	DATE

**NOTE:**  
 LOCATION OF UNDERGROUND STRUCTURES AS SHOWN ARE BASED ON THE BEST INFORMATION AVAILABLE. BUT NO GUARANTEE IS GIVEN THAT ALL EXISTING UTILITIES ARE SHOWN OR THAT THE GIVEN LOCATIONS ARE EXACT. CONFIRMATION OF EXISTENCE AND EXACT LOCATION OF ALL SERVICES MUST BE OBTAINED FROM THE INDIVIDUAL UTILITIES BEFORE PROCEEDING WITH CONSTRUCTION.

NO.	REVISIONS	YY/MM/DD	BY
0	ISSUED FOR CONSTRUCTION	09/07/24	KMB

**AECOM**

© 2009 AECOM Canada Ltd. All Rights Reserved. This document is protected by copyright law and may not be used, reproduced or modified in any manner or for any purpose except with the written permission of AECOM Canada Ltd. ("AECOM") or a party to which its copyright has been assigned. AECOM accepts no responsibility, and denies any liability whatsoever, to any party that uses, reproduces, modifies, or relies on this document without AECOM's express written consent.

DESIGNED BY	PL	CHECKED BY	ALD
DRAWN BY	KMB	APPROVED BY	KWF
HOR. SCALE	1:500	RELEASED FOR CONSTRUCTION	KZ
VERT. SCALE	N/A		
DATE	09/07/29	DATE	July 30/09

PROFESSIONAL'S SEAL  
 ISSUED FOR CONSTRUCTION  
 WAS SEALED BY  
 K. W. FITCHETT  
 AND DATED  
 JULY 29/09  
 CONSULTANT DRAWING NO.  
 D265-244-02\_01-C-1032\_RX.dwg

**THE CITY OF WINNIPEG**  
**WATER AND WASTE DEPARTMENT**

**2009 WASTE WATER SEWER RENEWALS BY REPAIRS AND REPLACEMENTS CONTRACT 18**

**VENUS BAY**  
 30m E OF BEAUMONT STREET TO CUL DE SAC

SHEET 32 OF 35	REV 0
CITY DRAWING NUMBER	8902