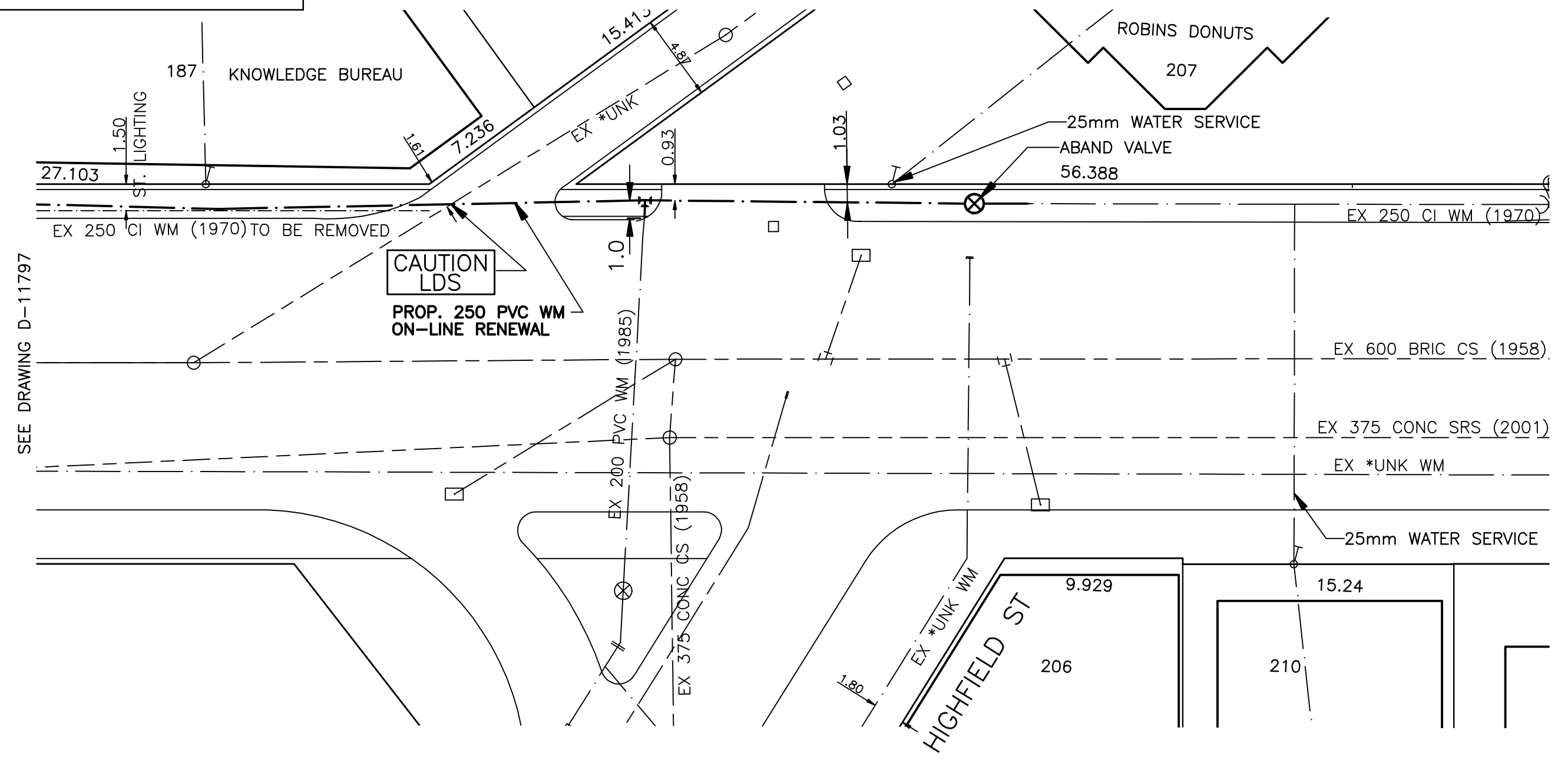


ADDRESS & NATURE OF SERVICE	SIZE (mm) & TYPE	SHORT & LONG MEASUREMENT	CORP LOCATION	REMARKS
187 St Mary's Road Commercial	19 Copper			SEWER/55
206 St Mary's Road Commercial	19 Copper			DRAWY A4099 SEWER/71 @ 75 FROM E CURB LINE OF LLOYD ST WATERMAIN RENEWAL
POSSIBLY 207 209 St Mary's Road Commercial	25 Copper			DRAWY A1964 NEW 150 PVC SEWER INTO CLAY ON CITY SIDE & 2 200 PVC LDS INTO 2 MH @
210 St Mary's Road Residential	25 Copper			SEWER/52

CHAINAGE ALONG EAST PROPERTY LINE OF ST MARY'S ROAD



- NOTES:**
1. ALL GATE VALVES ARE COUNTER-CLOCKWISE TO OPEN WITH A BLACK OPERATING NUT.
  2. WATERMAIN TO BE INSTALLED BY TRENCHLESS METHODS.
  3. BACKFILL IS CLASS 5 WITHIN BOULEVARD AND CLASS 3 WITHIN SIDEWALK OR WHEN WITHIN 1.0m OF PAVEMENT OR SIDEWALK.
  4. WATER SERVICES ARE 19mm UNLESS OTHERWISE NOTED.
  5. MINIMUM COVER TO TOP OF WATERMAIN SHALL BE 2.4m.
  6. LOCATION OF ALL SERVICES TO BE CONFIRMED IN FIELD.
  7. EXPOSE EXISTING WATERMAIN TO CONFIRM DEPTH PRIOR TO CONSTRUCTION.
  8. ALL LEAD SERVICES TO BE RENEWED TO PROPERTY LINE.
  9. SERVICES TO BE RENEWED SHALL BE REPLACED FROM WATERMAIN TO PROPERTY LINE. ALL OTHERS TO BE RECONNECTED.

**APEGN**  
Certificate of Authorization  
GENIVAR Consultants  
No. 4318 Expiry: April 30, 2010

METRIC  
WHOLE NUMBERS INDICATE MILLIMETRES  
DECIMALIZED NUMBERS INDICATE METRES

EXISTING	LEGEND - PLAN	PROPOSED	EXISTING	LEGEND - PLAN	PROPOSED	EXISTING	LEGEND - PROFILE	PROPOSED
—	WATERMAIN	—	—	REDUCER	—	—	150mm W.W.	—
—	HYDRANT VALVE	—	—	PLUG	—	—	150mm W.W.	—
—	LAND DRAINAGE SEWER	—	—	TRAFFIC SIGNAL	—	—	300mm L.D.S.	—
—	WASTE WATER SEWER	—	—	GAS	—	—	250mm W.W.S.	—
—	MANHOLE	—	—	HYDRO	—	—	250mm W.W.S.	—
—	CATCH BASIN	—	—	M.T.S.	—	—		—
—	CURB INLET	—	—	SURVEY BAR	—	—		—
—	TEE	—	—	CURB STOP	—	—		—
—	BEND	—	—	C.B. LEAD	—	—		—
—	ANODE	—	—	TREE	—	—		—
—		—	—	LAMP STANDARD	—	—		—

LOCATION APPROVED

SUPV. U/G STRUCTURES COMMITTEE

NOTE: LOCATION OF UNDERGROUND STRUCTURES AS SHOWN ARE BASED ON THE BEST INFORMATION AVAILABLE BUT NO GUARANTEE IS GIVEN THAT ALL EXISTING UTILITIES ARE SHOWN OR THAT THE GIVEN LOCATIONS ARE EXACT. CONFIRMATION OF EXISTENCE AND EXACT LOCATION OF ALL SERVICES MUST BE OBTAINED FROM THE INDIVIDUAL UTILITIES BEFORE PROCEEDING WITH CONSTRUCTION.

B.N. 34-005  
ELEV. 229.798

**GENIVAR**  
10 PRADIER WAY WINNIPEG, MANITOBA R2J 3J8  
PH: (204)-477-8650 FAX: (204)-474-2864

DESIGNED BY: DJ  
CHECKED BY: AB  
DRAWN BY: AB  
APPROVED BY: SM

HOR. SCALE: 1:250  
VERT. SCALE: 1:50

RELEASED FOR CONSTRUCTION  
SIGNATURE: K. ZUREK P. ENG  
DATE: MAY 25, 2009

CONSULTANT DRAWING NO. 09-049-02

ENGINEERS SEAL  
PROVINCE OF MANITOBA  
REGISTERED PROFESSIONAL ENGINEER  
I. G. MCKINNON

**THE CITY OF WINNIPEG**  
WATER AND WASTE DEPARTMENT

2009 CAPITAL WORKS  
WATERMAIN RENEWALS  
ST MARY'S ROAD

KENNY STREET TO  
HIGHFIELD STREET

SHEET 2 OF 4  
CITY DRAWING NO.  
D-11798