

- NOTES:**
1. ALL GATE VALVES ARE COUNTER-CLOCKWISE TO OPEN WITH A BLACK OPERATING NUT.
 2. WATERMAIN TO BE INSTALLED BY TRENCHLESS METHODS.
 3. BACKFILL IS CLASS 5 WITHIN BOULEVARD AND CLASS 3 WHEN WITHIN PAVEMENT/SIDEWALK OR WHEN WITHIN 1.0m OF PAVEMENT OR SIDEWALK.
 4. WATER SERVICES ARE 19mm UNLESS OTHERWISE NOTED.
 5. MINIMUM COVER TO TOP OF WATERMAIN SHALL BE 2.4m.
 6. LOCATION OF ALL SERVICES TO BE CONFIRMED IN FIELD.
 7. EXPOSE EXISTING WATERMAIN TO CONFIRM DEPTH PRIOR TO CONSTRUCTION.
 8. ALL LEAD SERVICES TO BE RENEWED TO PROPERTY LINE.
 9. SERVICES TO BE RENEWED SHALL BE REPLACED FROM WATERMAIN TO PROPERTY LINE. ALL OTHERS TO BE RECONNECTED.

METRIC
WHOLE NUMBERS INDICATE MILLIMETRES
DECIMALIZED NUMBERS INDICATE METRES



— — — — —	WATERMAIN	— — — — —	REDUCER	— — — — —	150mm W.W.	— — — — —	WATERMAIN	— — — — —	150mm W.W.
— — — — —	HYDRANT VALVE	— — — — —	PLUG	— — — — —	300mm L.D.S.	— — — — —	VALVE	— — — — —	300mm L.D.S.
— — — — —	LAND DRAINAGE SEWER	— — — — —	TRAFFIC SIGNAL	— — — — —	250mm W.W.S.	— — — — —	WASTE WATER SEWER	— — — — —	250mm W.W.S.
— — — — —	WASTE WATER SEWER	— — — — —	HYDRO	— — — — —		— — — — —	JUNCTIONS	— — — — —	
○	MANHOLE	●	M.T.S.	— — — — —		— — — — —	CULVERT	— — — — —	
□	CATCH BASIN	■	SURVEY BAR	— — — — —		— — — — —		— — — — —	
△	CURB INLET	▲	CURB STOP	— — — — —		— — — — —		— — — — —	
—	TEE	—	C.B. LEAD	— — — — —		— — — — —		— — — — —	
—	BEND	—	TREE	— — — — —		— — — — —		— — — — —	
—	ANODE	—	LAMP STANDARD	— — — — —		— — — — —		— — — — —	
EXISTING	LEGEND - PLAN	PROPOSED	EXISTING	LEGEND - PLAN	PROPOSED	EXISTING	LEGEND - PROFILE	PROPOSED	EXISTING

LOCATION APPROVED

SUPPLY U/G STRUCTURES COMMITTEE DATE

NOTE:
LOCATION OF UNDERGROUND STRUCTURES AS SHOWN ARE BASED ON THE BEST INFORMATION AVAILABLE BUT NO GUARANTEE IS GIVEN THAT ALL EXISTING UTILITIES ARE SHOWN OR THAT THE GIVEN LOCATIONS ARE EXACT. CONFIRMATION OF EXISTENCE AND EXACT LOCATION OF ALL SERVICES MUST BE OBTAINED FROM THE INDIVIDUAL UTILITIES BEFORE PROCEEDING WITH CONSTRUCTION.

B.N.	34-005				
ELEV.	229.798				
NO.	1	BID OPPORTUNITY 399-2009	MAY 09	DJ	
		REVISIONS	DATE	BY	

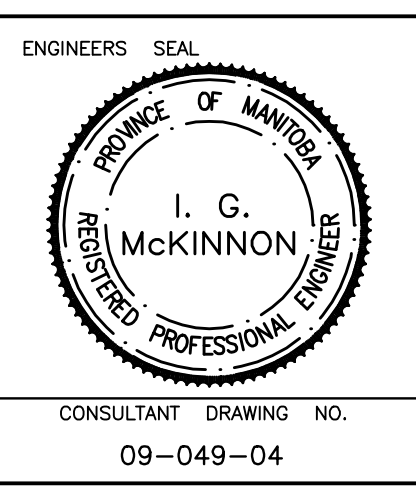
GENIVAR
10 PRINCE WAY WINNIPEG, MANITOBA R2J 3J8
PH: (204)-477-8650 FAX: (204)-474-2864

DESIGNED BY: DJ
CHECKED BY: AB

DRAWN BY: AB
APPROVED BY: SM

HOR. SCALE: 1:250
VERT. SCALE: 1:50

RELEASED FOR CONSTRUCTION
SIGNING BY: K. ZUREK P. ENG
DATE: MAY 25, 2009



THE CITY OF WINNIPEG
WATER AND WASTE DEPARTMENT

2009 CAPITAL WORKS
WATERMAIN RENEWALS
ROGER STREET

ST. MARY'S ROAD TO
5M EAST OF KENNY ST.

SHEET 4 OF 4
CITY DRAWING NO.
D-11800