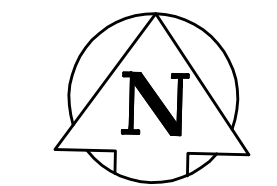
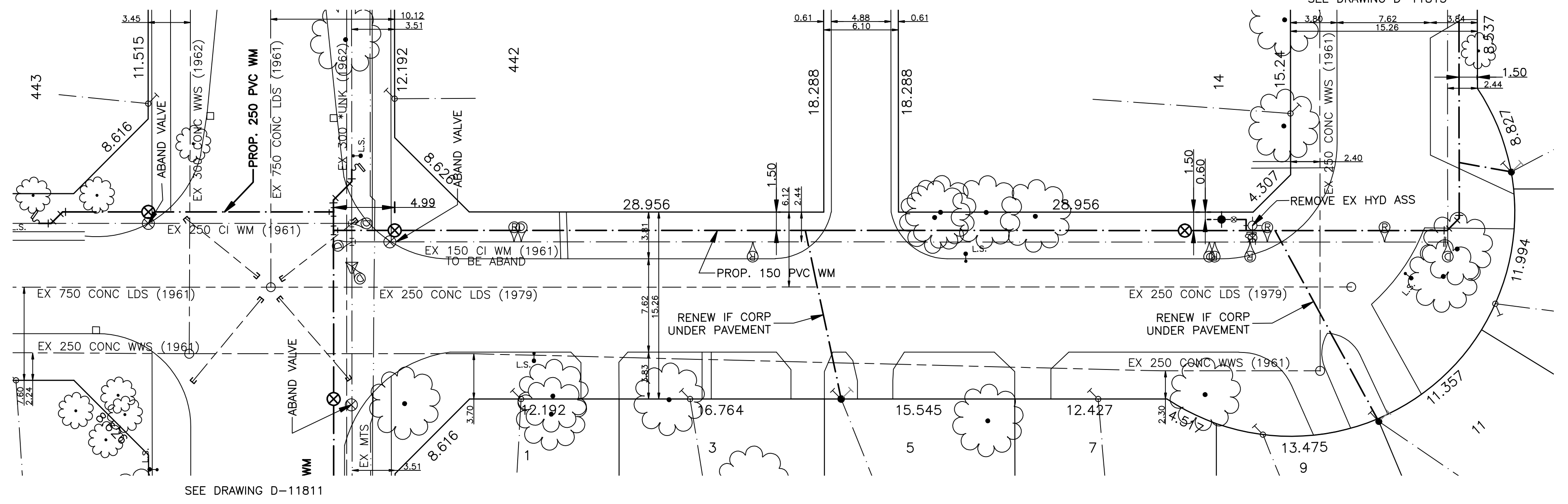


HOUSE WATER SERVICE INFORMATION					
ADDRESS & NATURE OF SERVICE	SIZE (mm) & TYPE	SHORT & LONG MEASUREMENT	CORP LOCATION	REMARKS	
1 Pembroke Road Residential	19 Copper	4.9 LR CR OF HSE		DR/WY A3479 SEWER/70	
3 Pembroke Road Residential	19 Copper	5.8 LR CR OF HSE		DR/WY A2356 SEWER/62	
5 Pembroke Road Residential	19 Copper	0.9 LR CR OF HSE		SEWER/62	
7 Pembroke Road Residential	19 Copper	4.4 LR CR OF HSE		DR/WY SEWER/62	
9 Pembroke Road Residential	19 Copper	5.8 LR CR OF HSE		SEWER/62	

CHAINAGE ALONG NORTH PROPERTY LINE OF PEMBROKE ROAD
PEMBROKE ROAD



- NOTES:**
- ALL GATE VALVES ARE COUNTER-CLOCKWISE TO OPEN WITH A BLACK OPERATING NUT.
 - WATERMAIN TO BE INSTALLED BY TRENCHLESS METHODS.
 - BACKFILL IS CLASS 5 WITHIN BOULEVARD AND CLASS 3 WHEN WITHIN PAVEMENT/SIDEWALK OR WHEN WITHIN 1.0m OF PAVEMENT OR SIDEWALK.
 - WATER SERVICES ARE 19mm UNLESS OTHERWISE NOTED.
 - MINIMUM COVER TO TOP OF WATERMAIN SHALL BE 2.4m.
 - LOCATION OF ALL SERVICES TO BE CONFIRMED IN FIELD.
 - EXPOSE EXISTING WATERMAIN TO CONFIRM DEPTH PRIOR TO CONSTRUCTION.
 - ALL LEAD SERVICES TO BE RENEWED TO PROPERTY LINE.
 - SERVICES TO BE RENEWED SHALL BE REPLACED FROM WATERMAIN TO PROPERTY LINE. ALL OTHERS TO BE RECONNECTED.



APEGM
Certificate of Authorization
GENIVAR Consultants
No. 4318 Expiry: April 30, 2010

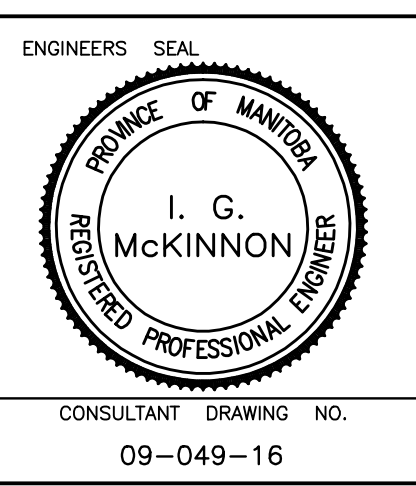
METRIC
WHOLE NUMBERS INDICATE MILLIMETRES
DECIMALIZED NUMBERS INDICATE METRES

---	WATERMAIN	---	REDUCER	---	150mm W.W.	WATERMAIN	150mm W.W.
---	HYDRANT VALVE	---	PLUG	---	300mm L.D.S.	LAND DRAINAGE SEWER	300mm L.D.S.
---	LAND DRAINAGE SEWER	---	TRAFFIC SIGNAL	---	250mm W.W.S.	WASTE WATER SEWER	250mm W.W.S.
---	WASTE WATER SEWER	---	GAS	---		JUNCTIONS	
○	MANHOLE	●	HYDRO	---		CULVERT	
□	CATCH BASIN	⊕	M.T.S.	---			
△	CURB INLET	▲	SURVEY BAR	---			
+	TEE	⊕	CURB STOP	---			
∩	BEND	∩	C.B. LEAD	---			
⊕	ANODE	⊕	TREE	---			
---	EXISTING	---	LAMP STANDARD	---			
---	LEGEND - PLAN	---	PROPOSED	---			

LOCATION APPROVED	B.N. 55-033	DESIGNED BY	DJ	CHECKED BY	AB
	ELEV. 232.899	DRAWN BY	AB	APPROVED BY	SM
		HOR. SCALE:	1:250	RELEASED FOR CONSTRUCTION	DATE
		VERT. SCALE:	1:50	SIGNED BY	K. ZUREK P. ENG
				DATE	MAY 25, 2009
				CONSULTANT DRAWING NO.	09-049-16

GENIVAR
200 TACHE AVENUE WINNIPEG, MANITOBA R2M 1A7
PH: (204)-235-2115 FAX: (204)-235-2080

DESIGNED BY: DJ
CHECKED BY: AB
DRAWN BY: AB
APPROVED BY: SM
HOR. SCALE: 1:250
VERT. SCALE: 1:50
RELEASED FOR CONSTRUCTION
SIGNED BY: K. ZUREK P. ENG
DATE: MAY 25, 2009



THE CITY OF WINNIPEG
WATER AND WASTE DEPARTMENT

2009 CAPITAL WORKS
WATERMAIN RENEWALS
PEMBROKE ROAD (SOUTH LEG)
WESTMOUNT DRIVE TO
PEMBROKE ROAD (EAST LEG)

SHEET 2 OF 4
CITY DRAWING NO. D-11812