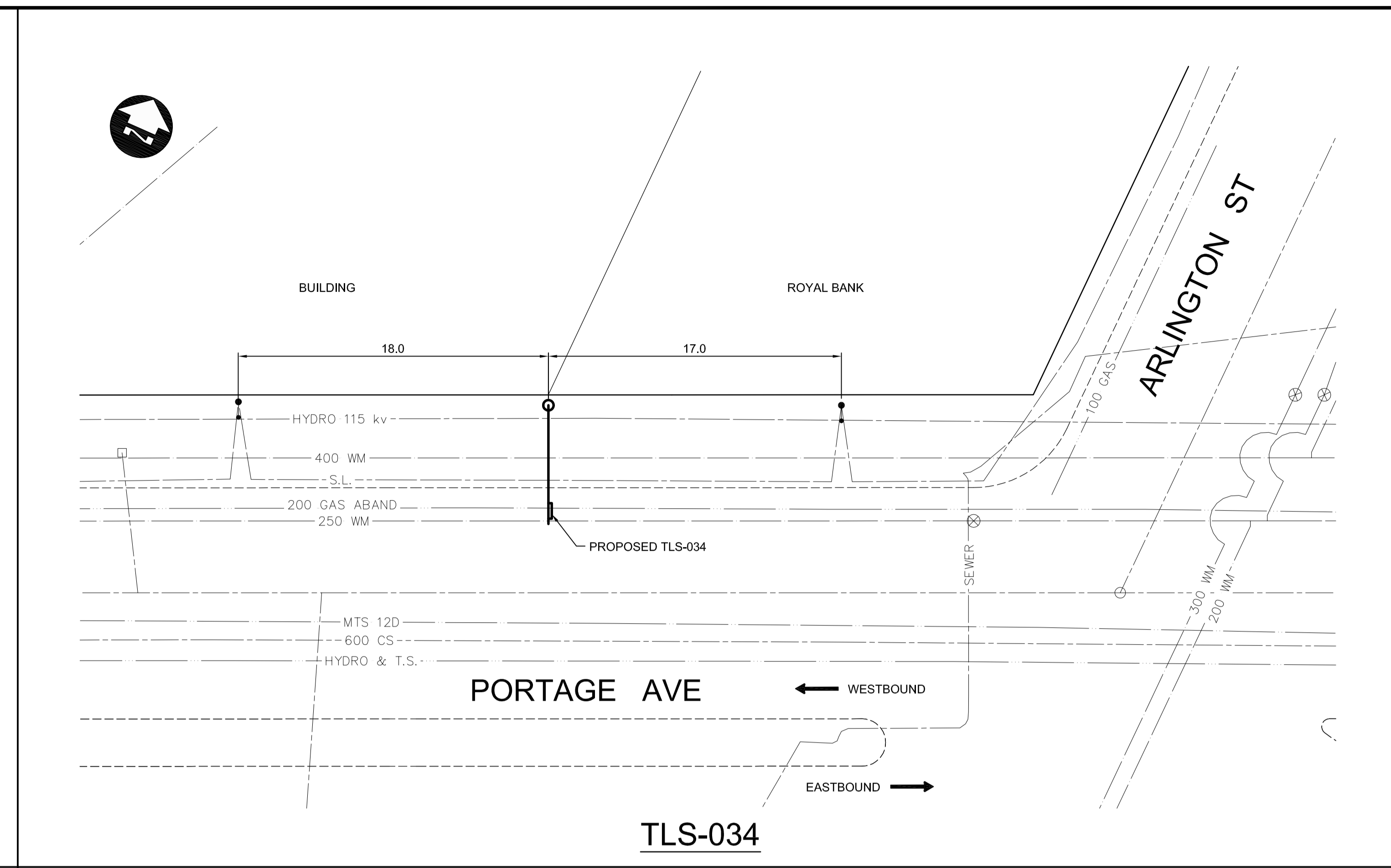
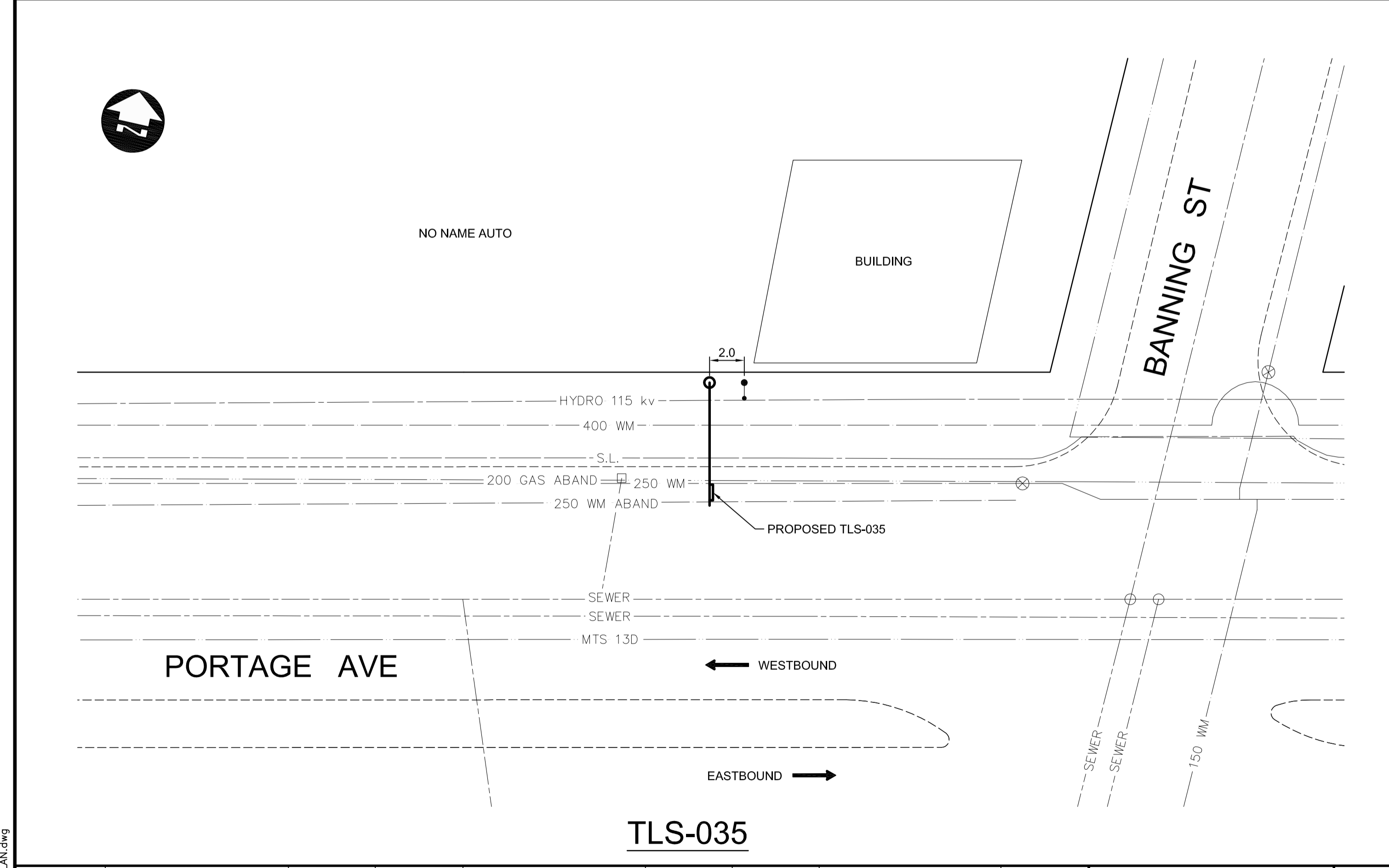


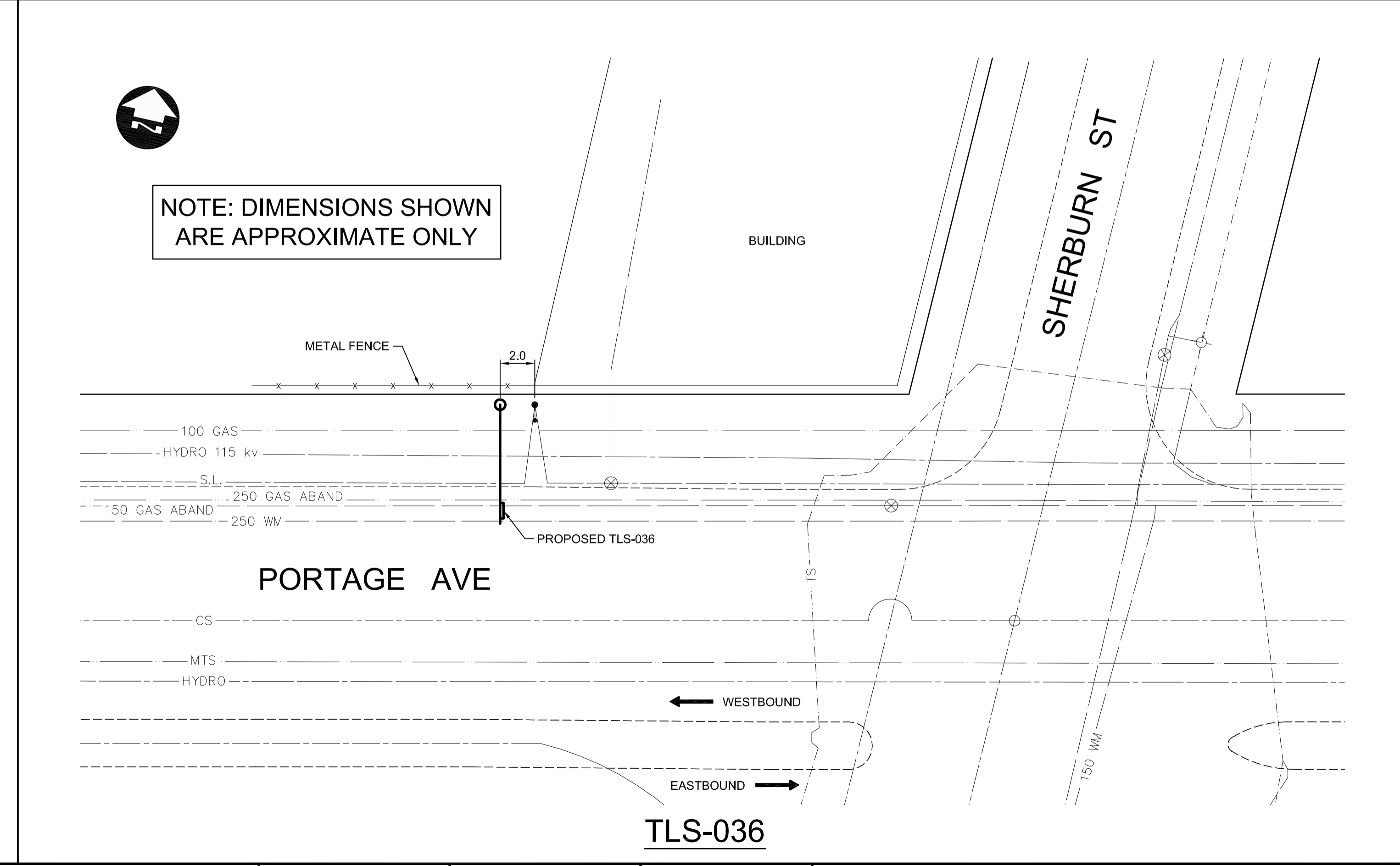
TLS-033



TLS-034



TLS-035



TLS-036

NOTE: DIMENSIONS SHOWN ARE APPROXIMATE ONLY

150 WM	WATERMAIN	150 WM	HYDRO	HYDRO	HYDRO	150 mm W.M.	WATERMAIN	150 mm W.M.
+	HYDRANT	+	MTS	MTS	+	+	HYDRANT	+
⊗	VALVE	⊗			+	+	VALVE	+
300 LDS	LAND DRAINAGE SEWER	300 LDS			300 mm L.D.S.	300 mm L.D.S.	LAND DRAINAGE SEWER	300 mm L.D.S.
250 WWS	WASTE WATER SEWER	250 WWS			250 mm W.W.S.	250 mm W.W.S.	WASTE WATER SEWER	250 mm W.W.S.
○	MANHOLE	●			---	---	PROFILE	---
□	CATCH BASIN	■			▨	▨	NORTH/WEST GUTTER	▨
▽	CURB INLET	▽			▨	▨	SOUTH/EAST GUTTER	▨
+	JUNCTIONS	+			---	---	NORTH/WEST T/LANE	---
+	CULVERT	+			---	---	SOUTH/EAST T/LANE	---
100 GAS	GAS	100 GAS			---	---	PARAPLEGIC RAMP	---
---	EXISTING	---	---	---	---	---	LEGEND-PROFILE	---
---	LEGEND-PLAN	---	---	---	---	---	PROPOSED	---

UNDERGROUND STRUCTURES			
SUPPLY, U/G STRUCTURES COMMITTEE	DATE	B.M. ELEV.	
NOTE:	LOCATION OF UNDERGROUND STRUCTURES AS SHOWN ARE BASED ON THE BEST INFORMATION AVAILABLE, BUT NO GUARANTEE IS GIVEN THAT ALL EXISTING UTILITIES ARE SHOWN OR THAT THE GIVEN LOCATIONS ARE EXACT. CONFIRMATION OF EXISTENCE AND EXACT LOCATION OF ALL SERVICES MUST BE OBTAINED FROM THE INDIVIDUAL UTILITIES BEFORE PROCEEDING WITH CONSTRUCTION.		
2	ISSUED FOR TENDER	06/19/09	TJH
1	ISSUED FOR REVIEW	06/04/09	TJH
NO.	REVISIONS	DATE	BY

DESIGNED BY	RJT
DRAWN BY	TJH
CHECKED BY	DBW
APPROVED BY	
HOR. SCALE	1:200
VERTICAL	
RELEASED FOR CONSTRUCTION	DATE

DILLON CONSULTING

ENGINEER'S SEAL
PROVINCE OF MANITOBA
ORIGINAL REGISTERED BY
D.B. WIEBE
06/19/09
Member 22480
REGISTERED PROFESSIONAL ENGINEER

CONSULTANT PROJECT NUMBER
09-1545

THE CITY OF WINNIPEG
TRANSIT DEPARTMENT

ON STREET TRANSIT PRIORITY IMPROVEMENTS - PHASE 3

CITY DRAWING NUMBER
TLS-09-05

SHEET 05 OF 23

CONSULTANT DRAWING NUMBER

PORTAGE AVENUE (2 OF 5)

G:\CAD\09-1545\Contract\CHSS\CHSS-PLAN.dwg