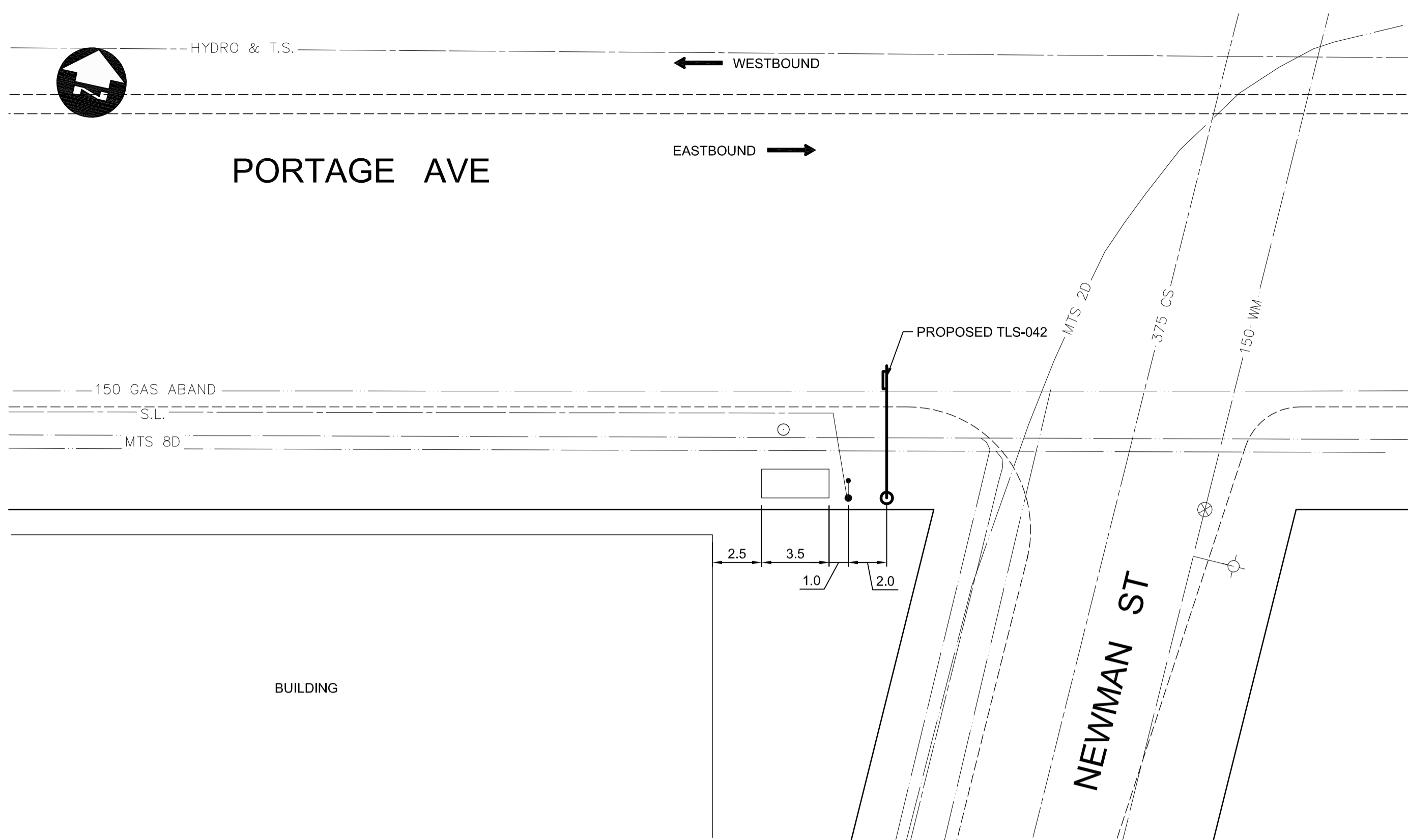
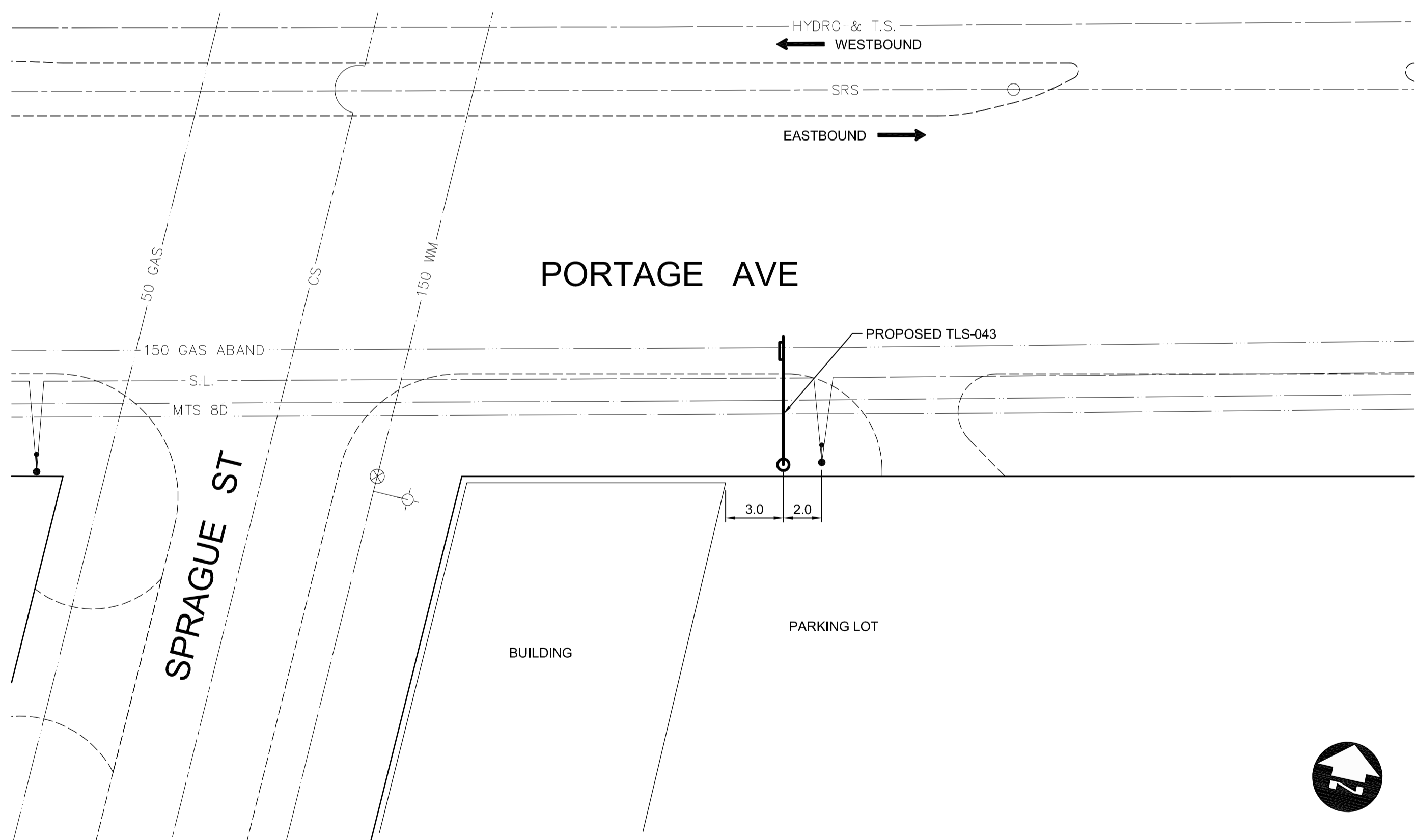


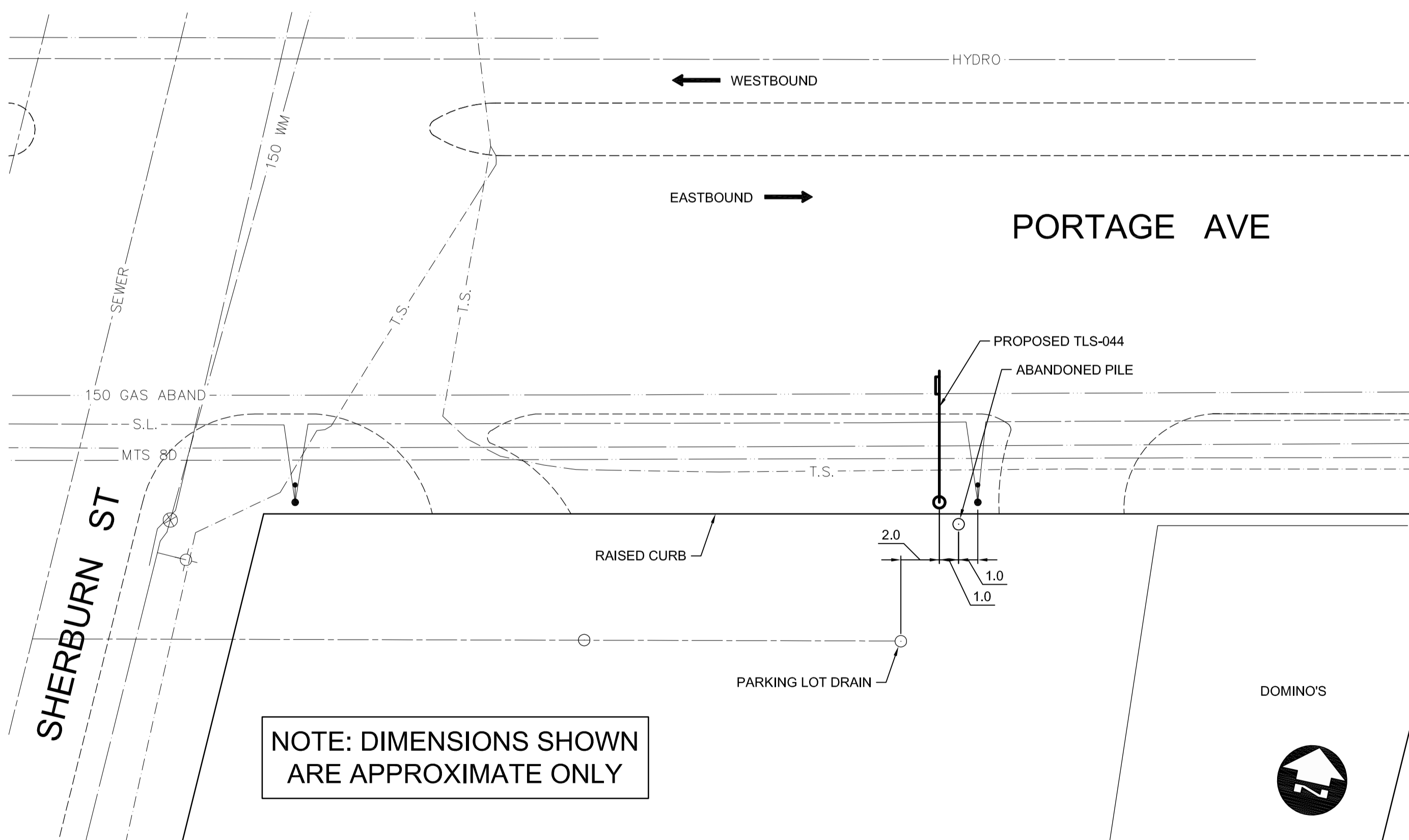
TLS-041



TLS-042



TLS-043



TLS-044

NOTE: DIMENSIONS SHOWN ARE APPROXIMATE ONLY

150 WM	WATERMAIN	150 WM	HYDRO	HYDRO	HYDRO	150 mm W.M.	WATERMAIN	150 mm W.M.
⊕	HYDRANT	⊕	MTS	MTS	MTS	+	HYDRANT	+
⊗	VALVE	⊗				+	VALVE	+
300 LDS	LAND DRAINAGE SEWER	300 LDS				300 mm L.D.S.	LAND DRAINAGE SEWER	300 mm L.D.S.
250 WWS	WASTE WATER SEWER	250 WWS				250 mm W.W.S.	WASTE WATER SEWER	250 mm W.W.S.
○	MANHOLE	●				—	PROFILE	—
□	CATCH BASIN	■				—	NORTH/WEST GUTTER	—
▽	CURB INLET	▽				—	SOUTH/EAST GUTTER	—
+	JUNCTIONS	+				—	NORTH/WEST T/LANE	—
—	CULVERT	—				—	SOUTH/EAST T/LANE	—
100 GAS	GAS	100 GAS				—	PARAPLEGIC RAMP	—
—	EXISTING	—	—	—	—	—	LEGEND—PROFILE	—
—	LEGEND—PLAN	—	—	—	—	—	LEGEND—PROFILE	—
—	PROPOSED	—	—	—	—	—	PROPOSED	—

UNDERGROUND STRUCTURES SUPV. U/G STRUCTURES COMMITTEE DATE		B.M. ELEV.		DESIGNED BY RJT DRAWN BY TJH CHECKED BY DBW APPROVED BY							
NOTE: LOCATION OF UNDERGROUND STRUCTURES AS SHOWN ARE BASED ON THE BEST INFORMATION AVAILABLE, BUT NO GUARANTEE IS GIVEN THAT ALL EXISTING UTILITIES ARE SHOWN OR THAT THE GIVEN LOCATIONS ARE EXACT. CONFIRMATION OF EXISTENCE AND EXACT LOCATION OF ALL SERVICES MUST BE OBTAINED FROM THE INDIVIDUAL UTILITIES BEFORE PROCEEDING WITH CONSTRUCTION.		2 ISSUED FOR TENDER 06/19/09 TJH 1 ISSUED FOR REVIEW 06/04/09 TJH		HOR. SCALE 1:200 VERTICAL		RELEASED FOR CONSTRUCTION DATE		CONSULTANT PROJECT NUMBER 09-1545		ON STREET TRANSIT PRIORITY IMPROVEMENTS - PHASE 3 PORTAGE AVENUE (4 OF 5)	
										CITY DRAWING NUMBER TLS-09-07 SHEET 07 OF 23 CONSULTANT DRAWING NUMBER	

G:\CAD\091545\Contract\CHSS\CHSS-PLAN.dwg