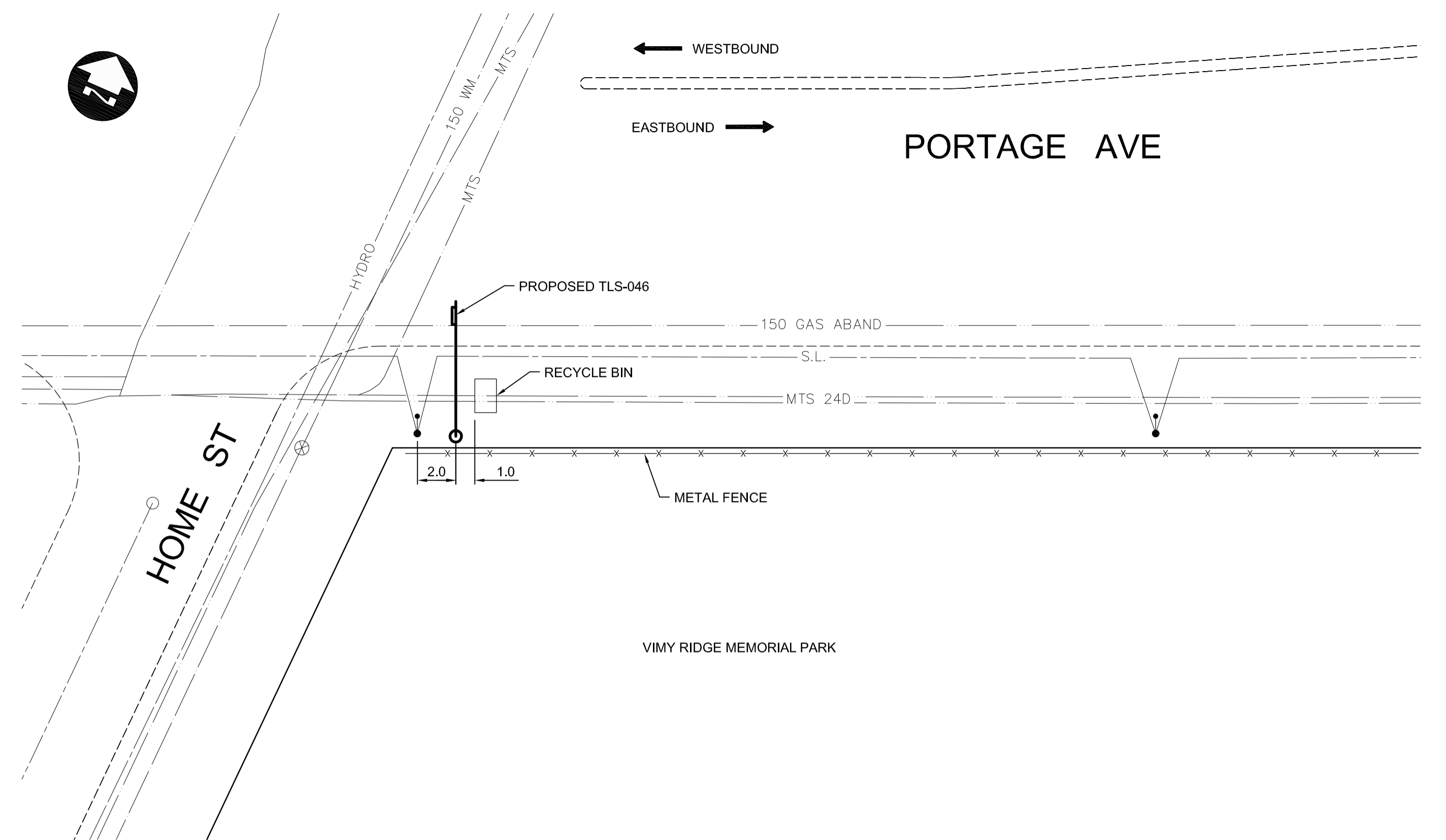
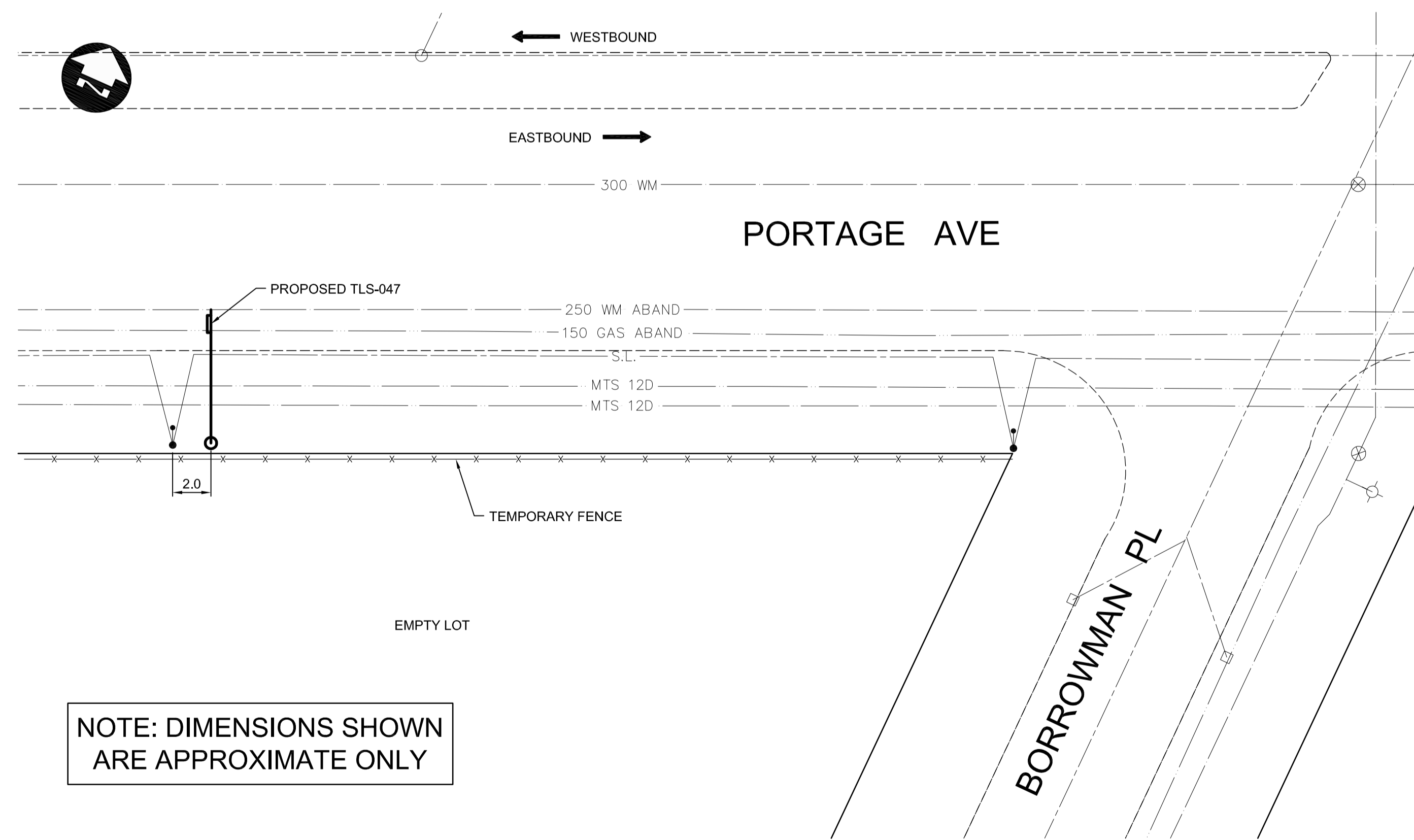


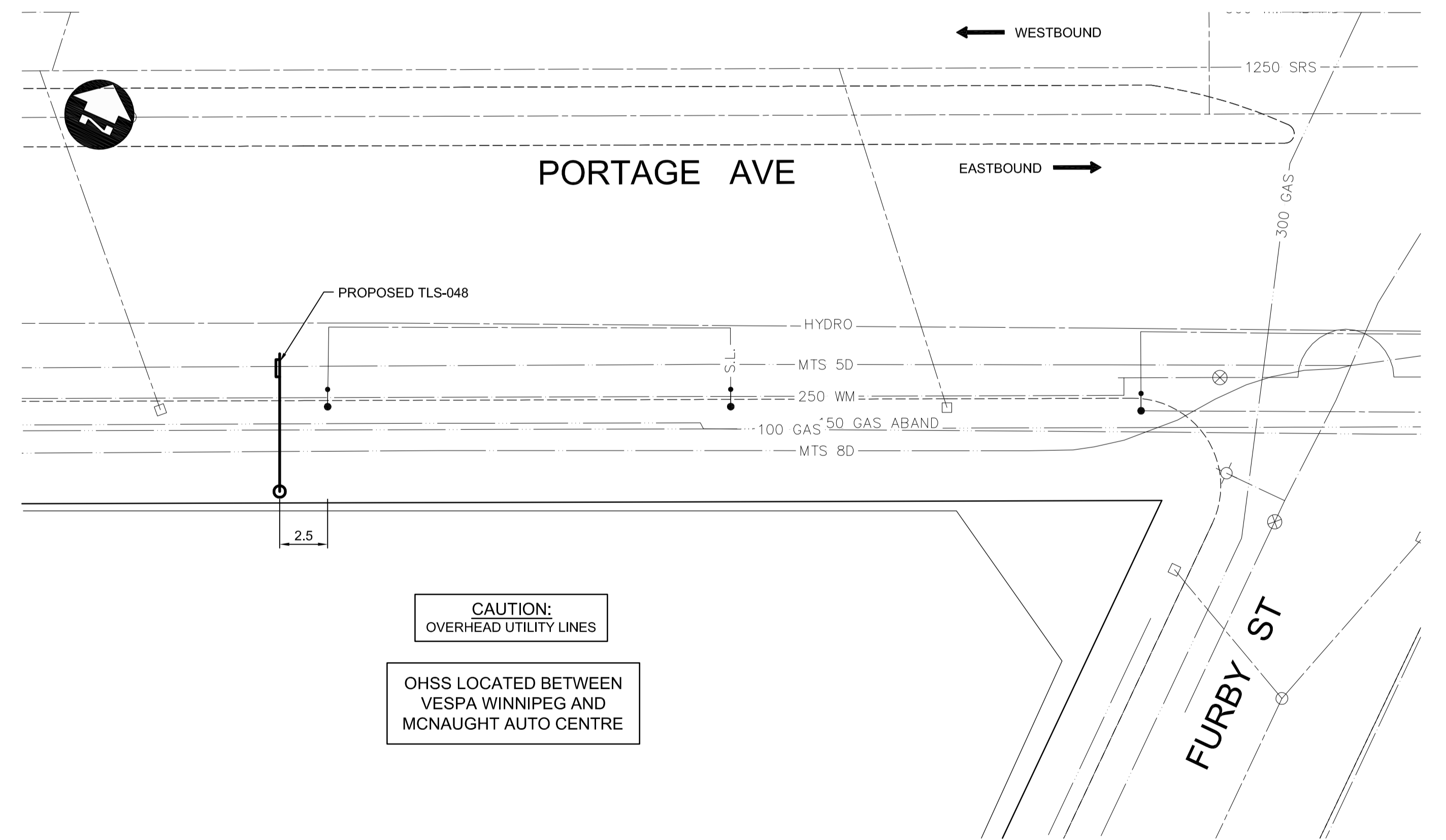
TLS-045



TLS-046



TLS-047



TLS-048

NOTE: DIMENSIONS SHOWN ARE APPROXIMATE ONLY

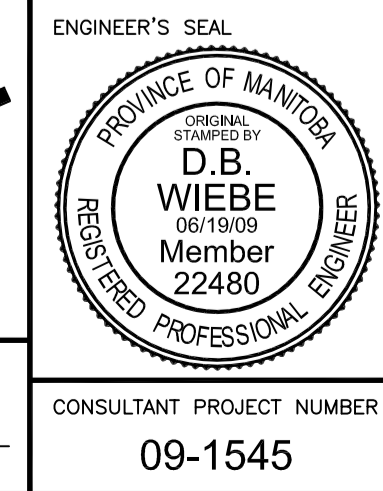
CAUTION: OVERHEAD UTILITY LINES
OHSS LOCATED BETWEEN VESPA WINNIPEG AND MCNAUGHT AUTO CENTRE

150 WM	WATERMAIN	150 WM	HYDRO	HYDRO	HYDRO	150 mm W.M.	WATERMAIN	150 mm W.M.
⊕	HYDRANT	⊕	MTS	MTS	MTS	+	HYDRANT	+
⊗	VALVE	⊗				+	VALVE	+
⊗	LAND DRAINAGE SEWER	⊗				+	LAND DRAINAGE SEWER	+
⊗	WASTE WATER SEWER	⊗				+	WASTE WATER SEWER	+
○	MANHOLE	●				+	MANHOLE	+
□	CATCH BASIN	■				+	CATCH BASIN	+
▽	CURB INLET	▽				+	CURB INLET	+
+	JUNCTIONS	+				+	JUNCTIONS	+
+	CULVERT	+				+	CULVERT	+
+	100 GAS	+				+	100 GAS	+
---	EXISTING	---	---	---	---	---	EXISTING	---
---	LEGEND-PLAN	---	---	---	---	---	LEGEND-PLAN	---
---	PROPOSED	---	---	---	---	---	PROPOSED	---
---	EXISTING	---	---	---	---	---	EXISTING	---
---	LEGEND-PROFILE	---	---	---	---	---	LEGEND-PROFILE	---
---	PROPOSED	---	---	---	---	---	PROPOSED	---

UNDERGROUND STRUCTURES	B.M. ELEV.
SUPPLY, U/G STRUCTURES COMMITTEE	DATE
NOTE:	
LOCATION OF UNDERGROUND STRUCTURES AS SHOWN ARE BASED ON THE BEST INFORMATION AVAILABLE, BUT NO GUARANTEE IS GIVEN THAT ALL EXISTING UTILITIES ARE SHOWN OR THAT THE GIVEN LOCATIONS ARE EXACT. CONFIRMATION OF EXISTENCE AND EXACT LOCATION OF ALL SERVICES MUST BE OBTAINED FROM THE INDIVIDUAL UTILITIES BEFORE PROCEEDING WITH CONSTRUCTION.	
2 ISSUED FOR TENDER	06/19/09 TJH
1 ISSUED FOR REVIEW	06/04/09 TJH
NO. REVISIONS	DATE BY

DESIGNED BY	RJT
DRAWN BY	TJH
CHECKED BY	DBW
APPROVED BY	
HOR. SCALE	1:200
VERTICAL	
RELEASED FOR CONSTRUCTION	DATE

PROVINCE OF MANITOBA	REGISTERED PROFESSIONAL ENGINEER
D.B. WIEBE	Member 22480
CONSULTANT PROJECT NUMBER	09-1545



THE CITY OF WINNIPEG TRANSIT DEPARTMENT	
ON STREET TRANSIT PRIORITY IMPROVEMENTS - PHASE 3	CITY DRAWING NUMBER TLS-09-08
PORTAGE AVENUE (5 OF 5)	SHEET 08 OF 23
	CONSULTANT DRAWING NUMBER

G:\CAD\091545\Contract\CHSS\OHSS-PLAN.dwg