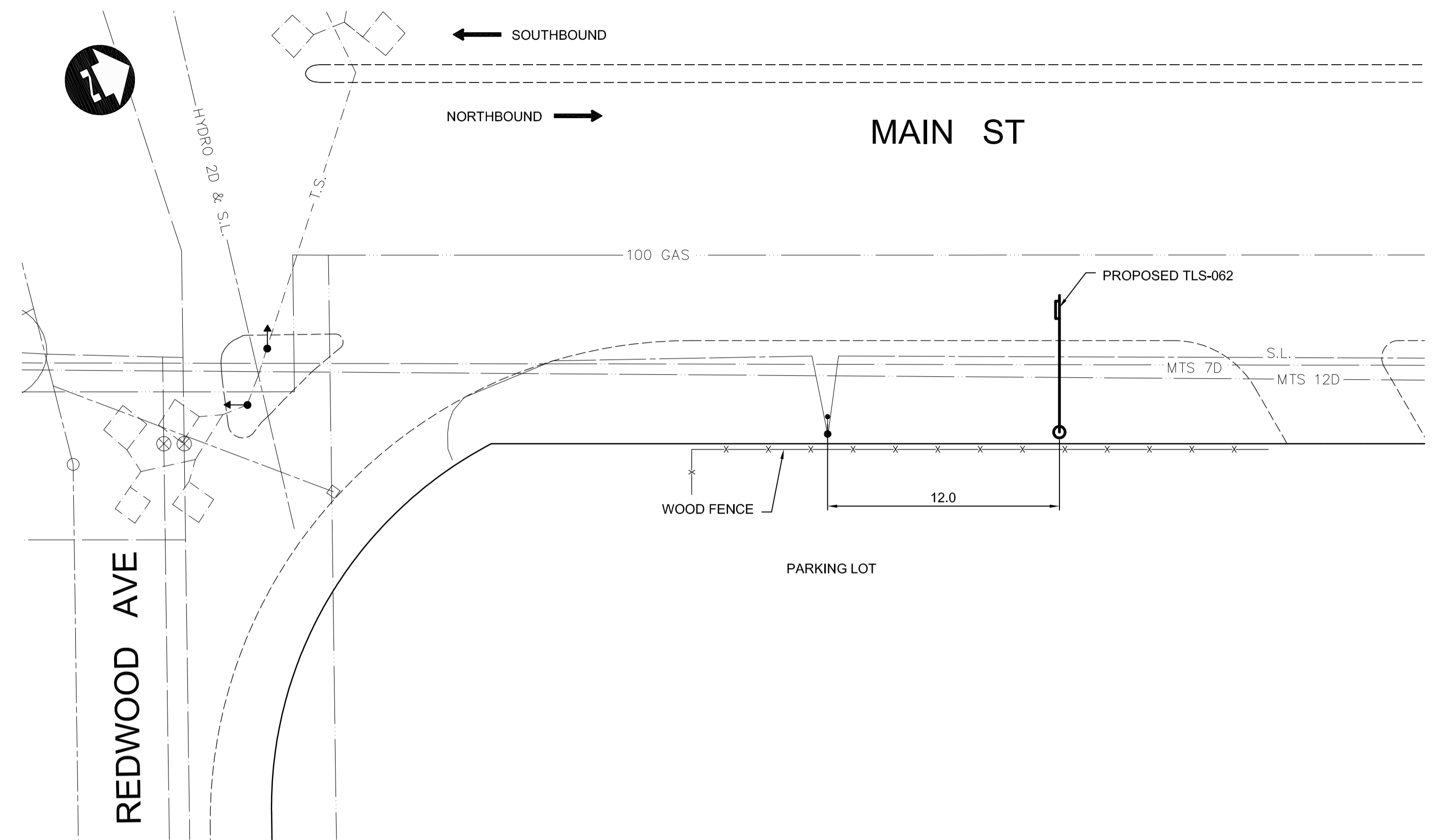
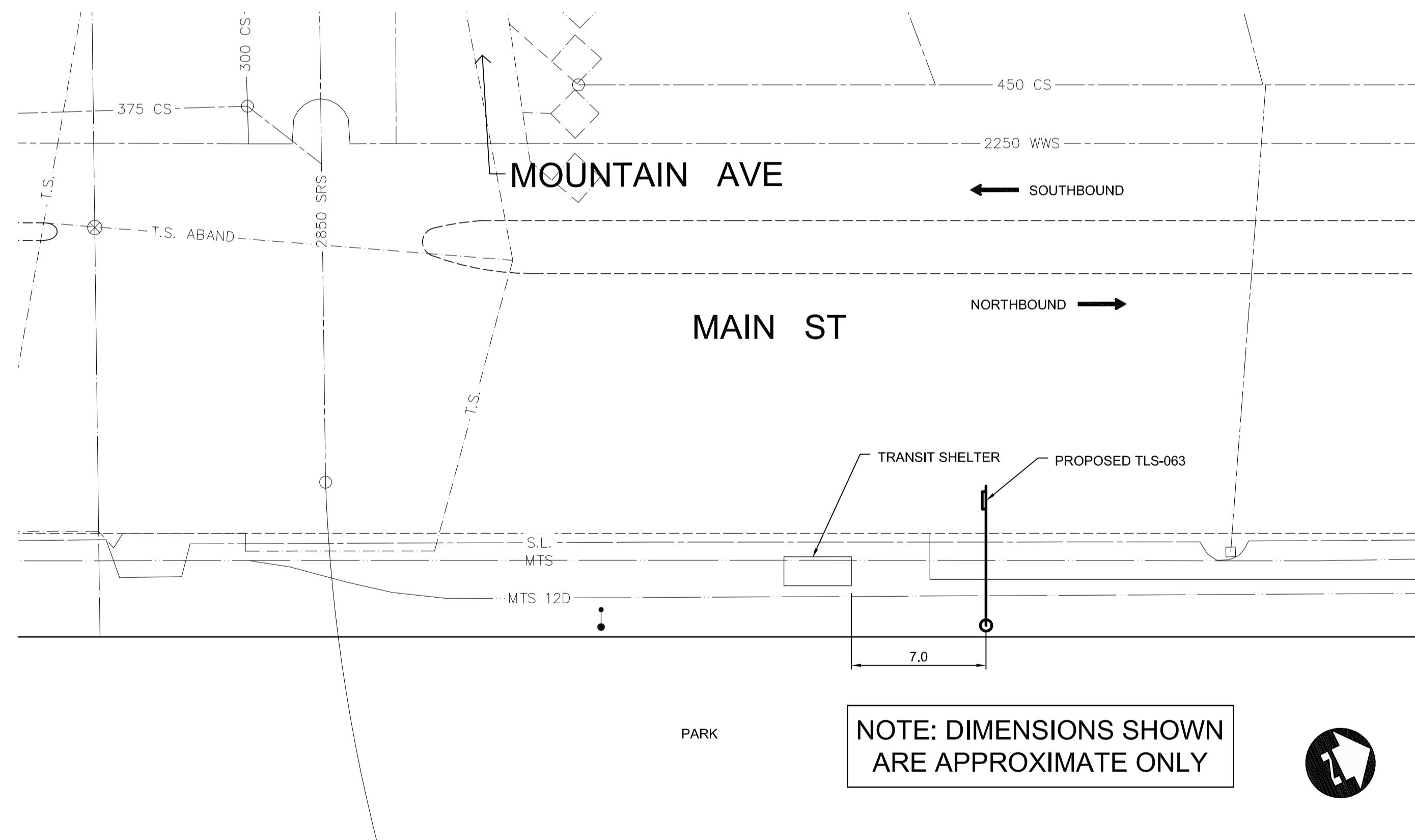


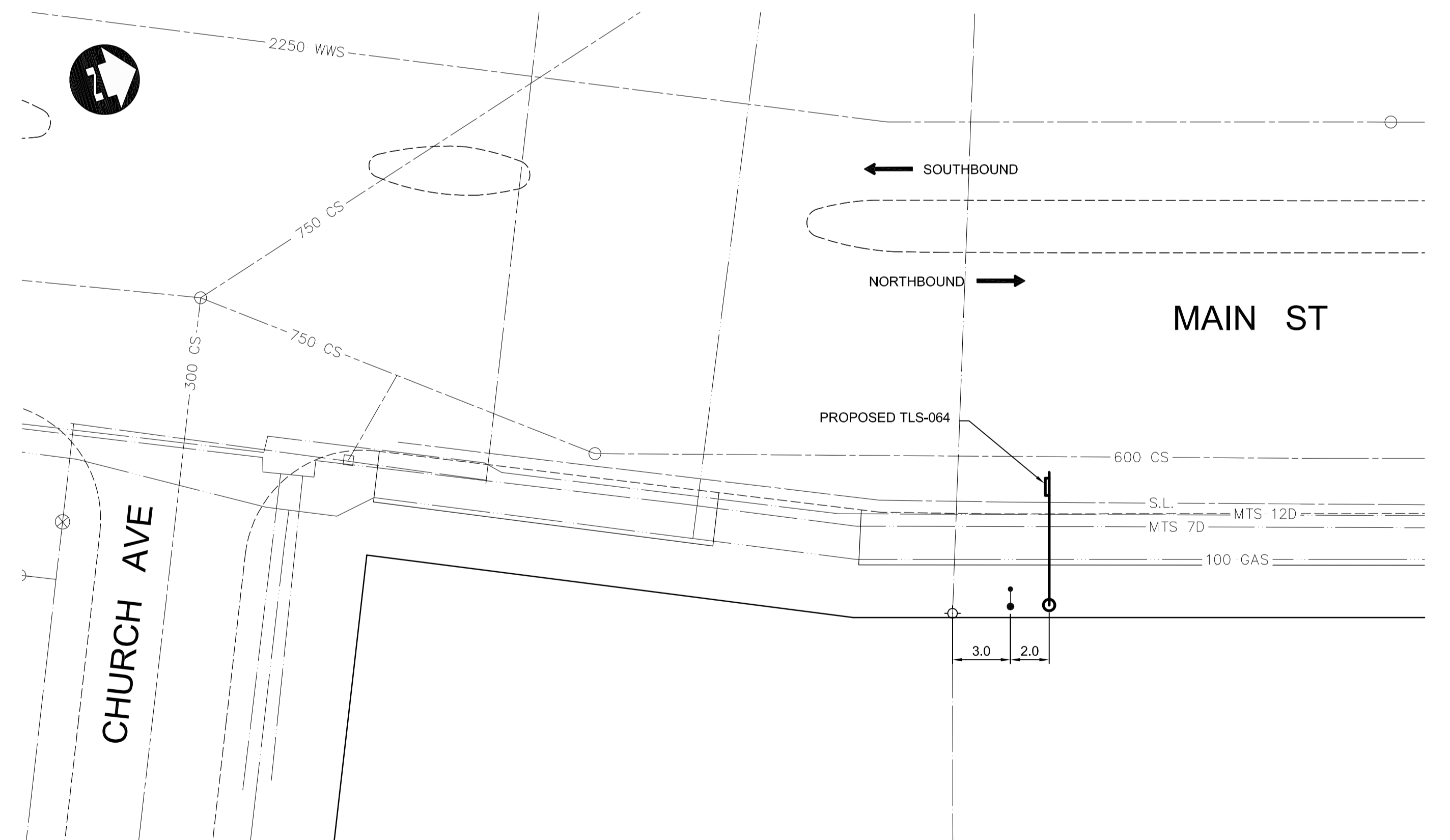
TLS-061



TLS-062



TLS-063



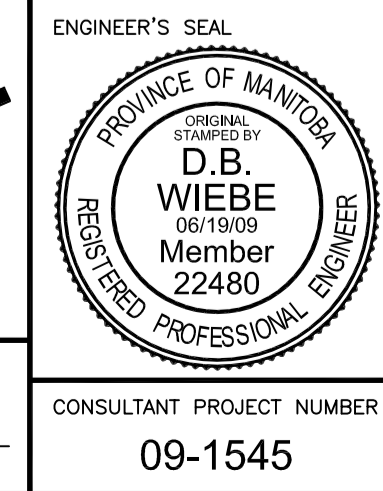
TLS-064

EXISTING	LEGEND-PLAN	PROPOSED	EXISTING	LEGEND-PLAN	PROPOSED	EXISTING	LEGEND-PROFILE	PROPOSED
150 WM	WATERMAIN	150 WM	HYDRO	HYDRO	HYDRO	150 mm W.M.	WATERMAIN	150 mm W.M.
⊕	HYDRANT	⊕	MTS	M.T.S.	MTS	+	HYDRANT	+
⊗	VALVE	⊗		CONCRETE		+	VALVE	+
300 LDS	LAND DRAINAGE SEWER	300 LDS		ASPHALT	300 mm L.D.S.	300 mm L.D.S.	LAND DRAINAGE SEWER	300 mm L.D.S.
250 WWS	WASTE WATER SEWER	250 WWS		PLANING	250 mm W.W.S.	250 mm W.W.S.	WASTE WATER SEWER	250 mm W.W.S.
○	MANHOLE	●		SIDEWALK		- - -	PROFILE	- - -
□	CATCH BASIN	■		PAVING STONES		▨	NORTH/WEST GUTTER	▨
▽	CURB INLET	▽		PARTIAL DEPTH REPAIR		▨	SOUTH/EAST GUTTER	▨
	JUNCTIONS			PROPERTY LINE		—	NORTH/WEST T/LANE	—
	CULVERT			SURVEY BAR		—	SOUTH/EAST T/LANE	—
100 GAS	GAS	100 GAS		PARAPLEGIC RAMP		—		

UNDERGROUND STRUCTURES		B.M. ELEV.
SUPPLY, U/G STRUCTURES COMMITTEE	DATE	
NOTE:	LOCATION OF UNDERGROUND STRUCTURES AS SHOWN ARE BASED ON THE BEST INFORMATION AVAILABLE, BUT NO GUARANTEE IS GIVEN THAT ALL EXISTING UTILITIES ARE SHOWN OR THAT THE GIVEN LOCATIONS ARE EXACT. CONFIRMATION OF EXISTENCE AND EXACT LOCATION OF ALL SERVICES MUST BE OBTAINED FROM THE INDIVIDUAL UTILITIES BEFORE PROCEEDING WITH CONSTRUCTION.	
2	ISSUED FOR TENDER	06/19/09 TJH
1	ISSUED FOR REVIEW	06/04/09 TJH
NO.	REVISIONS	DATE BY

DESIGNED BY	RJT
DRAWN BY	TJH
CHECKED BY	DBW
APPROVED BY	
HOR. SCALE	1:200
VERTICAL	
RELEASED FOR CONSTRUCTION	DATE

ENGINEER'S SEAL	PROVINCE OF MANITOBA
REGISTERED PROFESSIONAL ENGINEER	D.B. WIEBE
Member 22480	06/19/09
CONSULTANT PROJECT NUMBER	09-1545



ON STREET TRANSIT PRIORITY IMPROVEMENTS - PHASE 3		CITY DRAWING NUMBER	TLS-09-12
MAIN STREET (4 OF 5)		SHEET	12 OF 23
		CONSULTANT DRAWING NUMBER	

G:\CAD\091545\Contract\CHSS\CHSS-PLAN.dwg