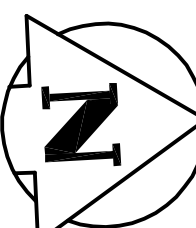
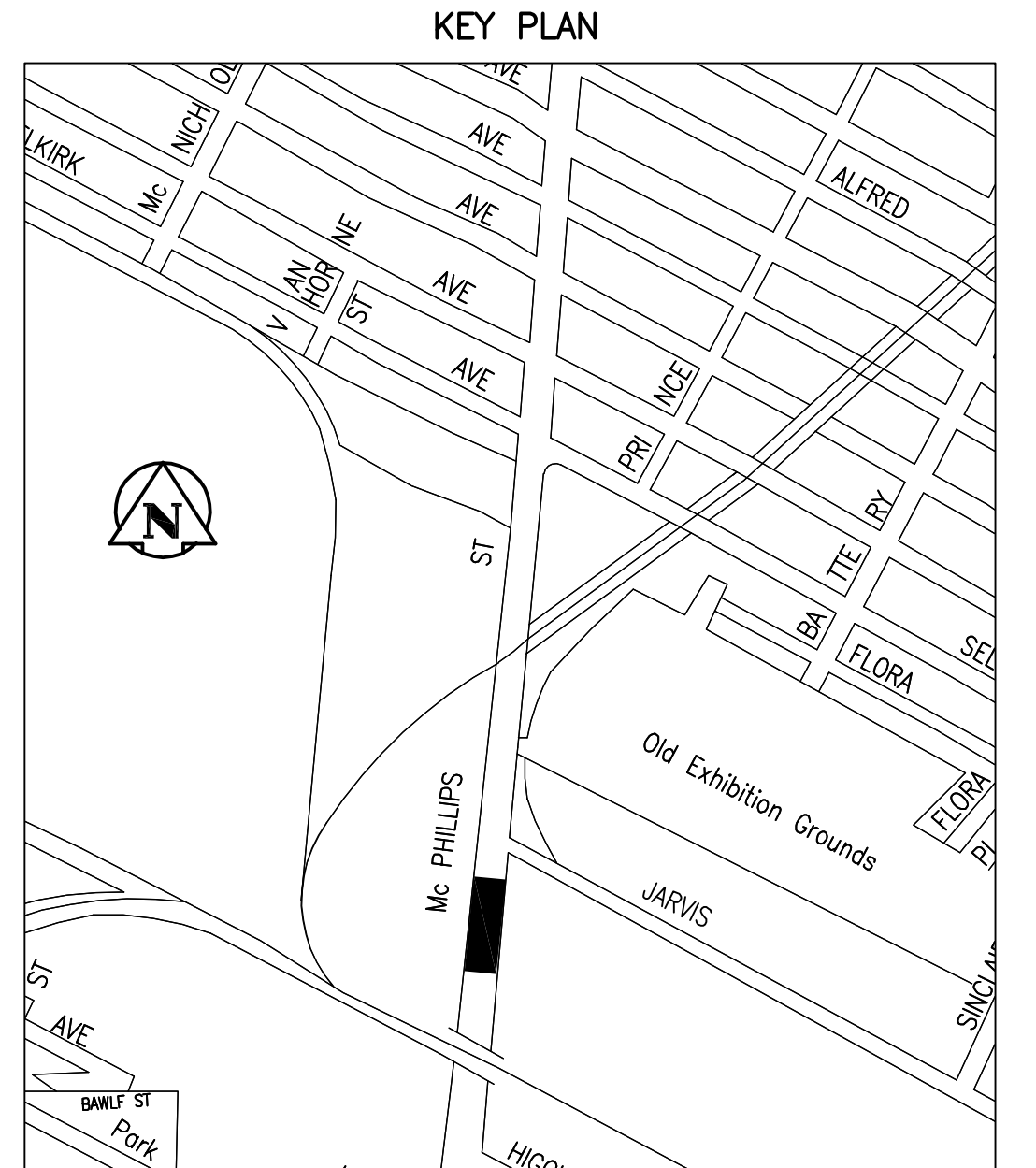
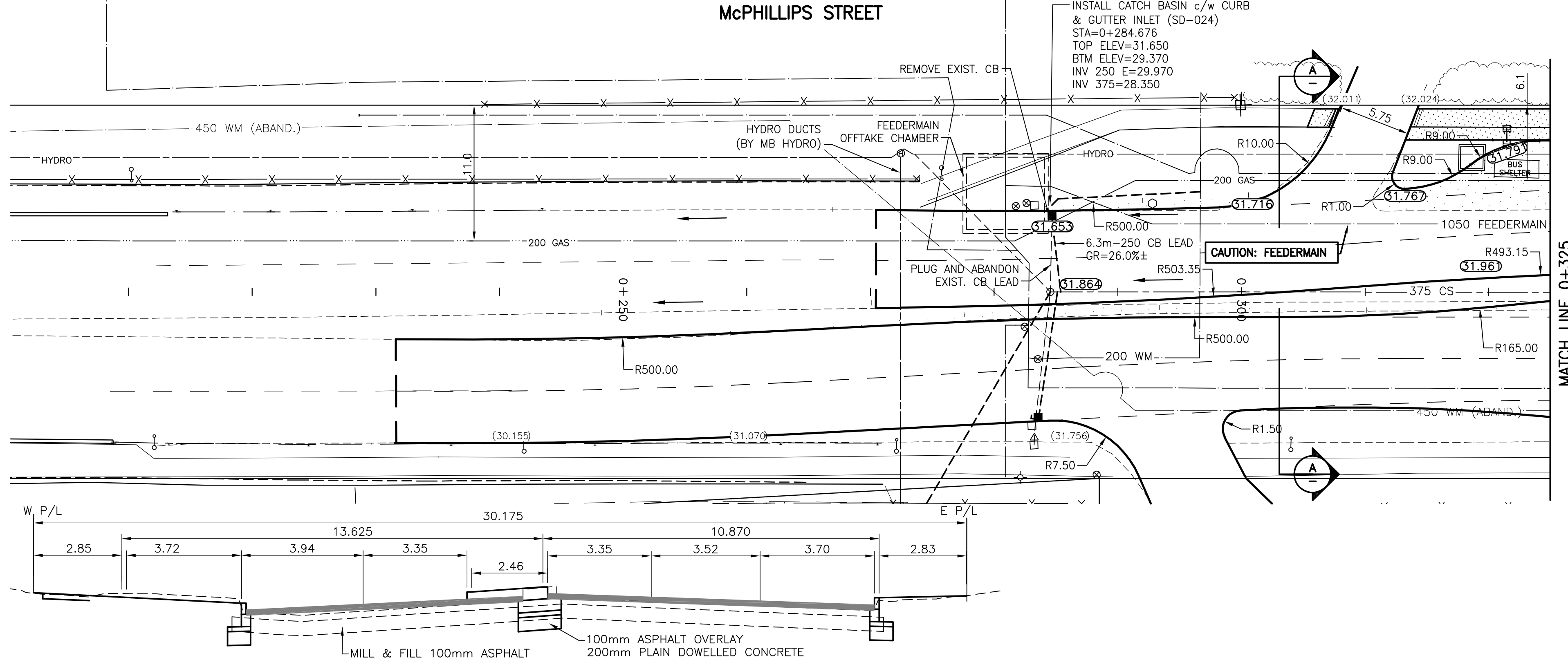


0+200 0+225 0+250 0+275 0+300 0+325

McPHILLIPS STREET



METRIC
WHOLE NUMBERS INDICATE MILLIMETRES
DECIMALIZED NUMBERS INDICATE METRES

WARNING

IF POWER EQUIPMENT OR EXPLOSIVES ARE TO BE USED FOR EXCAVATION ON THIS PROJECT THE CONTRACTOR MUST:
1) NOTIFY THE GAS COMPANY OF THE PROPOSED LOCATION OF EXCAVATION.
2) TAKE PRECAUTION TO AVOID DAMAGE TO GAS COMPANY INSTALLATIONS.
SEE PROVINCIAL REGULATION 140/92 FOR DETAILS

A SECTION AT STA 0+305
C-201/C-202 1:100H 1:50V

BENCH MARK: S.E. Cor. McPhillips St. & Selkirk Ave., Tbit. in W. Conc. foundation of No. 635 McPhillips St., 10.4 m S. & 0.35 m below brick of N.W. Cor. of Bldg.

EXISTING	LEGEND-PLAN	PROPOSED	EXISTING	LEGEND-PLAN	PROPOSED	EXISTING	LEGEND-PROFILE	PROPOSED
150 W/W	WATERMAIN	150 W/W	HYDRO	CONCRETE	150 W/W	WATERMAIN	150 W/W	WATERMAIN
300 L/S	LAND DRAINAGE SEWER	300 L/S	M.T.S.	ASPHALT	300 L/S	HYDRANT VALVE	300 L/S	LAND DRAINAGE SEWER
750 W/W	WASTE WATER SEWER	750 W/W	PROPERTY LINE	750 W/W	750 W/W	WASTE WATER SEWER	750 W/W	WASTE WATER SEWER
○	MANHOLE	●	SURVEY BAR	○	○	○ PROFILE	○	○ PROFILE
□	CATCH BASIN	■	GEODETIC BENCHMARK	○	○	○	○	○
▽	CURB INLET	▽	DITCH	○	○	○	○	○
+	JUNCTIONS	+	ELEVATION	○	○	○	○	○
▬	CULVERT	▬	SIDEWALK RAMP	○	○	○	○	○
---	GAS	---		○	○	○	○	○

LOCATION APPROVED UNDERGROUND STRUCTURES

SUPV. U/G STRUCTURES COMMITTEE DATE

NOTE:
LOCATION OF UNDERGROUND STRUCTURES AS SHOWN ARE BASED ON THE BEST INFORMATION AVAILABLE BUT NO GUARANTEE IS GIVEN THAT ALL EXISTING UTILITIES ARE SHOWN OR THAT THE GIVEN LOCATIONS ARE EXACT. CONFIRMATION OF EXISTENCE AND EXACT LOCATION OF ALL SERVICES MUST BE OBTAINED FROM THE INDIVIDUAL UTILITIES BEFORE PROCEEDING WITH CONSTRUCTION.

NO.	REVISIONS	DATE	BY
0	ISSUED FOR TENDER	09.06.05	V.M.M.
0	ISSUED FOR U/G REVIEW	09.04.29	V.M.M.
0	ISSUED FOR REVIEW	09.02.13	V.M.M.

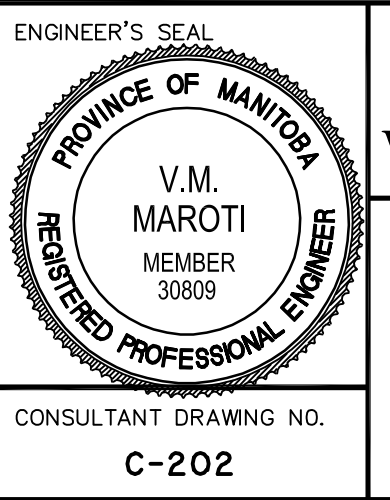
Stantec Consulting Ltd.
905 Waverley Street, Winnipeg, Manitoba
Tel 204-489-5900 Fax 204-453-9012

DESIGNED BY: V.M.M. CHECKED BY: K.A.R.
DRAWN BY: T.G. APPROVED BY: V.M.M.

HOR. SCALE: 1:250
VERTICAL: 1:10

RELEASED FOR CONSTRUCTION: _____
DATE: _____

DATE: 08.10.10



THE CITY OF WINNIPEG
PUBLIC WORKS DEPARTMENT
ENGINEERING DIVISION

McPHILLIPS STREET
CPR RAIL LINES TO SELKIRK AVENUE
STA. 0+200 TO STA. 0+325 SOUTH BOUND
STREET RENEWAL

SHEET 3 OF 15
CAD FILE DRAWING NUMBER 05000c-201-705.dwg
CITY DRAWING NUMBER P-3302-3

CONSULTANT DRAWING NO. C-202

APEGM
Certificate of Authorization
Stantec Consulting Ltd.
No. 1301 Expiry: April 30, 2010

V:\117\winn\11700000\dwg\02_dwg\p\winn\11700000\00000-201-705.dwg 2009-08-04 09:06AM By: tgg