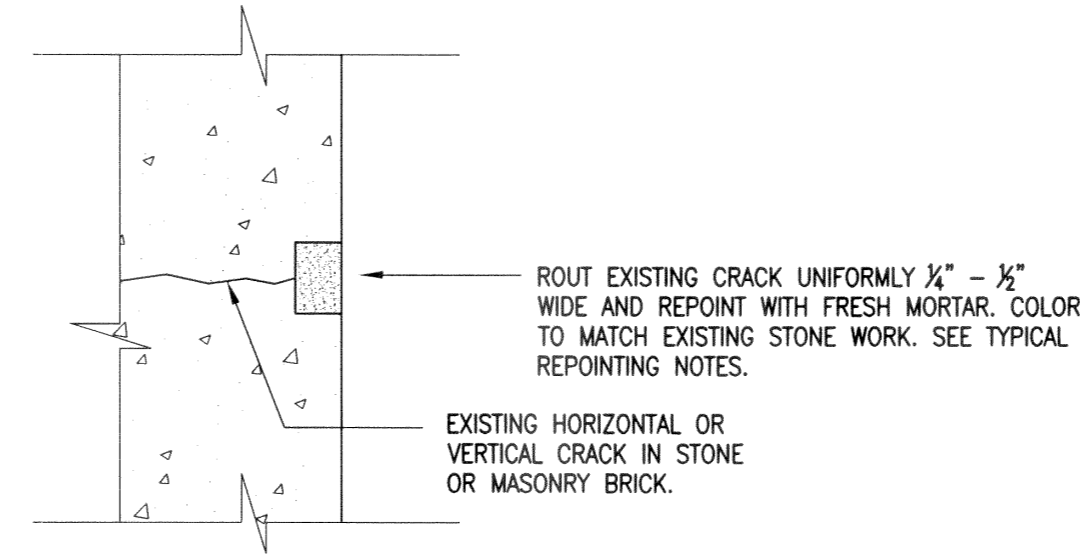
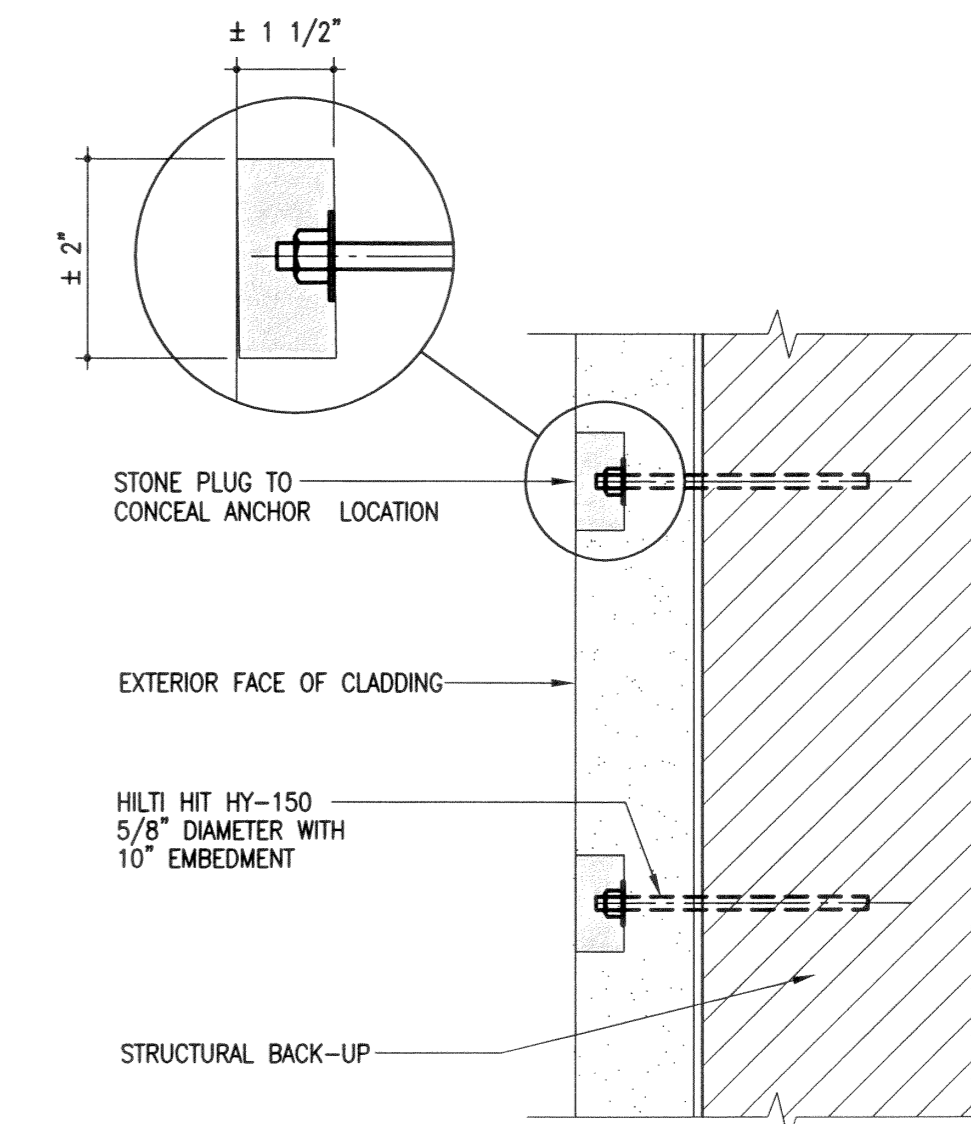


A SECTION
S-6 N.T.S.
APPLIES TO TOP SURFACE ONLY OF HORIZONTAL STONE JOINTS ONLY.

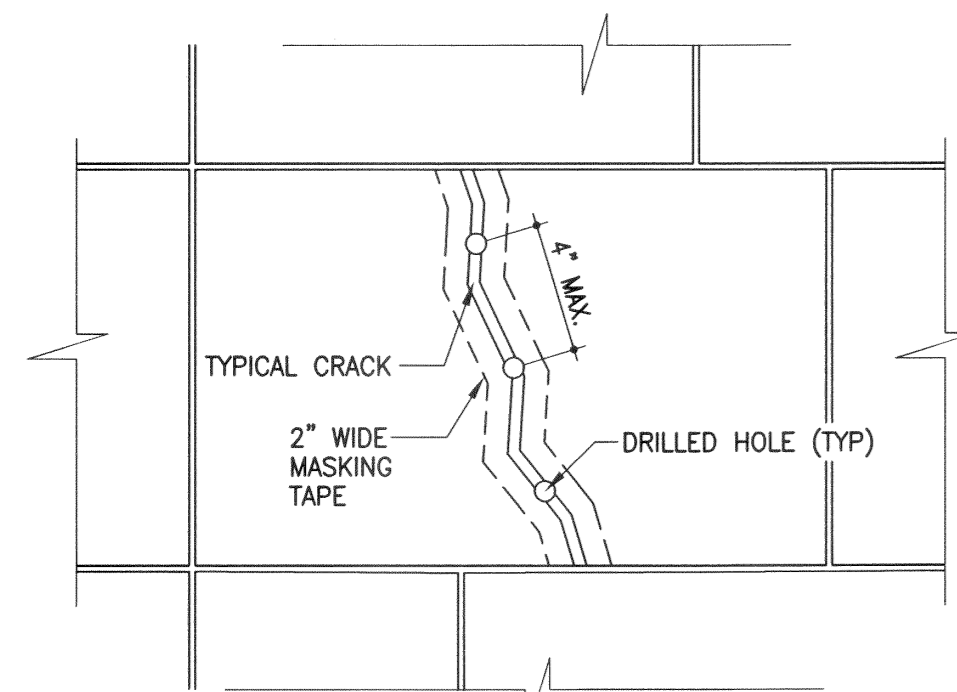


B CRACK ROUTING AND MORTAR REPAIR
S-6 SCALE: NTS



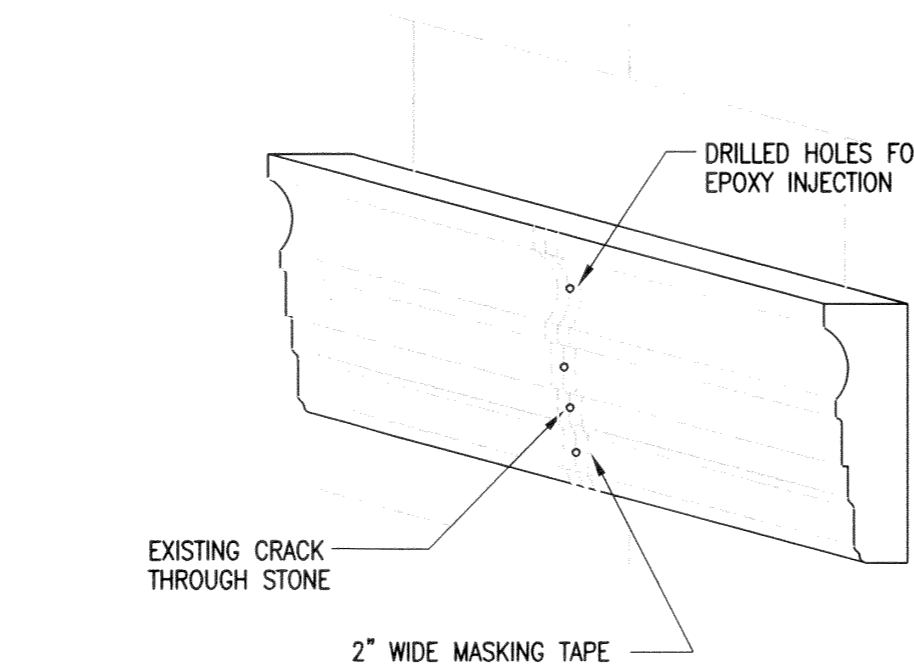
C HILTI HIT HY-20 INSTALLATION DETAIL
S-6 N.T.S. UNIT PRICE

1 COPING STONE AND SILL DETAIL
S-6 SCALE: NTS BASE BID

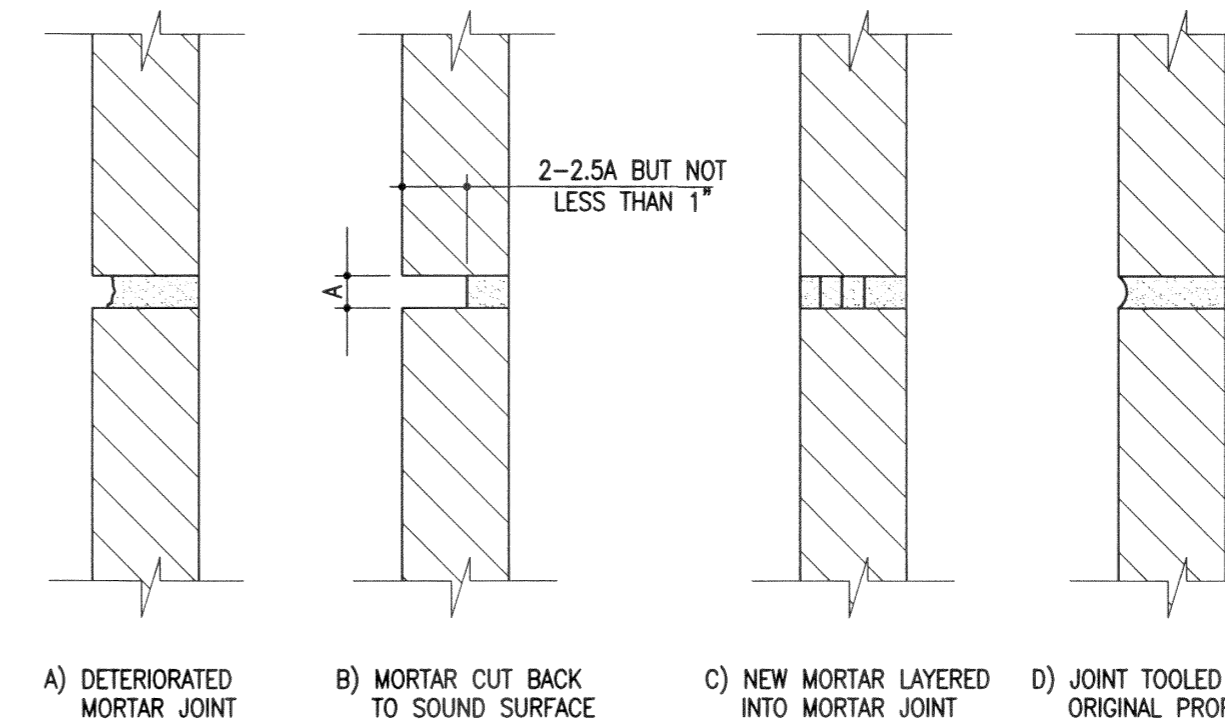


D EPOXY INJECTION DETAIL
S-6 SCALE: NTS UNIT PRICE

NOTE:
ALL PORTS AND SEALS MUST BE GROUT FROM SURFACE TO EXPOSE STONE SUBSTRATE.
REPAIR DETAIL ALSO APPLIES TO CRACKS THROUGH FLOOR AND ROOF CORNICE CONFIGURATIONS.



E CRACK REPAIR DETAIL
S-6 SCALE: NTS UNIT PRICE
NOTE: STONE FLOOR CORNICE CONFIGURATION VARIES



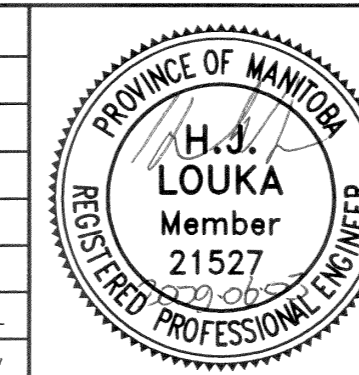
F MORTAR JOINT REPOINTING PROCEDURE
S-6 SCALE: N.T.S. (BASE BID)

MASONRY JOINT REPOINTING NOTES:

- ALL LOCATIONS IDENTIFIED BY CONSULTANT.
- (A) CONSULTANT TO IDENTIFY MORTAR JOINTS FOR REPOINTING ACCORDING TO TYPES OF DETERIORATION INCLUDE:
 - I) OPEN JOINTS: THE MORTAR IS DEEPLY ERODED (MORE THAN 1/2" FROM FACE OF MASONRY) OR HAS FALLEN OUT.
 - II) CRACKED JOINTS: CRACKS OF HAIRLINE WIDTH OR LARGER HAVE FORMED IN MORTAR.
 - III) SEPARATED JOINTS: MORTAR AND MASONRY DO NOT ADHERE, RESULTING IN GAP BETWEEN TWO, OR MORTAR SITTING LOOSE ON JOINT.
 - IV) TEST FOR VOIDS AND WEAKNESS BY USING HAMMERS OR OTHER APPROVED MEANS.
 - V) CAULKING HAS BEEN INSTALLED ON OR IN JOINT LINE.
- (B) RAKE UNSOUND JOINTS FREE OF DETERIORATED AND LOOSE MORTAR, DIRT AND OTHER UNDESIRABLE MATERIAL. JOINTS SHOULD BE RAKED TO A DEPTH OF 2 TO 2.5 TIMES THE VERTICAL JOINT WIDTH, BUT AT NO POINT LESS THAN 1". FLUSH OPEN JOINTS AND VOIDS CLEAN WITH WATER AND/OR AIR, AND IF NOT FREE DRAINING, BLOW CLEAN WITH COMPRESSED AIR.
- (C) MORTAR JOINTS ARE TO BE FILLED IN SUCCESSIVE LAYERS. DEEPER JOINTS SHALL BE FILLED FIRST COMPACTING NEW MORTAR IN SEVERAL LAYERS UNTIL BACK OF JOINT IS FLAT. SEVERAL 1/2" LAYERS WILL BE NEEDED TO FILL THE JOINT FLUSH WITH THE SURFACE OF THE MASONRY. ALLOW EACH LAYER TO REACH THUMBPRINT HARDNESS BEFORE THE NEXT IS APPLIED.
- (D) FINISH MASONRY JOINTS TO MATCH EXISTING MORTAR JOINTS. LEAVE EXISTING MASONRY WORK CLEAN AND FREE OF MORTAR DROPPINGS.
- (E) ALL STONE MORTAR TO BE CSA TYPE N. SEE SPECIFICATIONS FOR FURTHER DETAILS.
- (F) JOINT TO BE FINISHED TO ORIGINAL PROFILE.



No.	Date	Issue/Revision	By
	JUNE 3/09	ISSUED FOR TENDER	HJL



300-275 Carlton Street
Winnipeg, Manitoba R3C 5R6
T 204. 943. 7501
F 204. 943. 7507

Crosier Kilgour & Partners Ltd.
CONSULTING STRUCTURAL ENGINEERS

The General Contractor shall check & verify all dimensions and report any errors or omissions to the designers.

Project CARNEGIE BUILDING - EXTERIOR MASONRY REPAIRS 380 WILLIAM AVENUE WINNIPEG, MANITOBA					Sheet No. S-6
Sheet Title MASONRY REPAIR DETAILS					
Design HJL	Drawn HJ	Checked HJL	Scale AS NOTED	Date JUNE 2009	File 2008-245