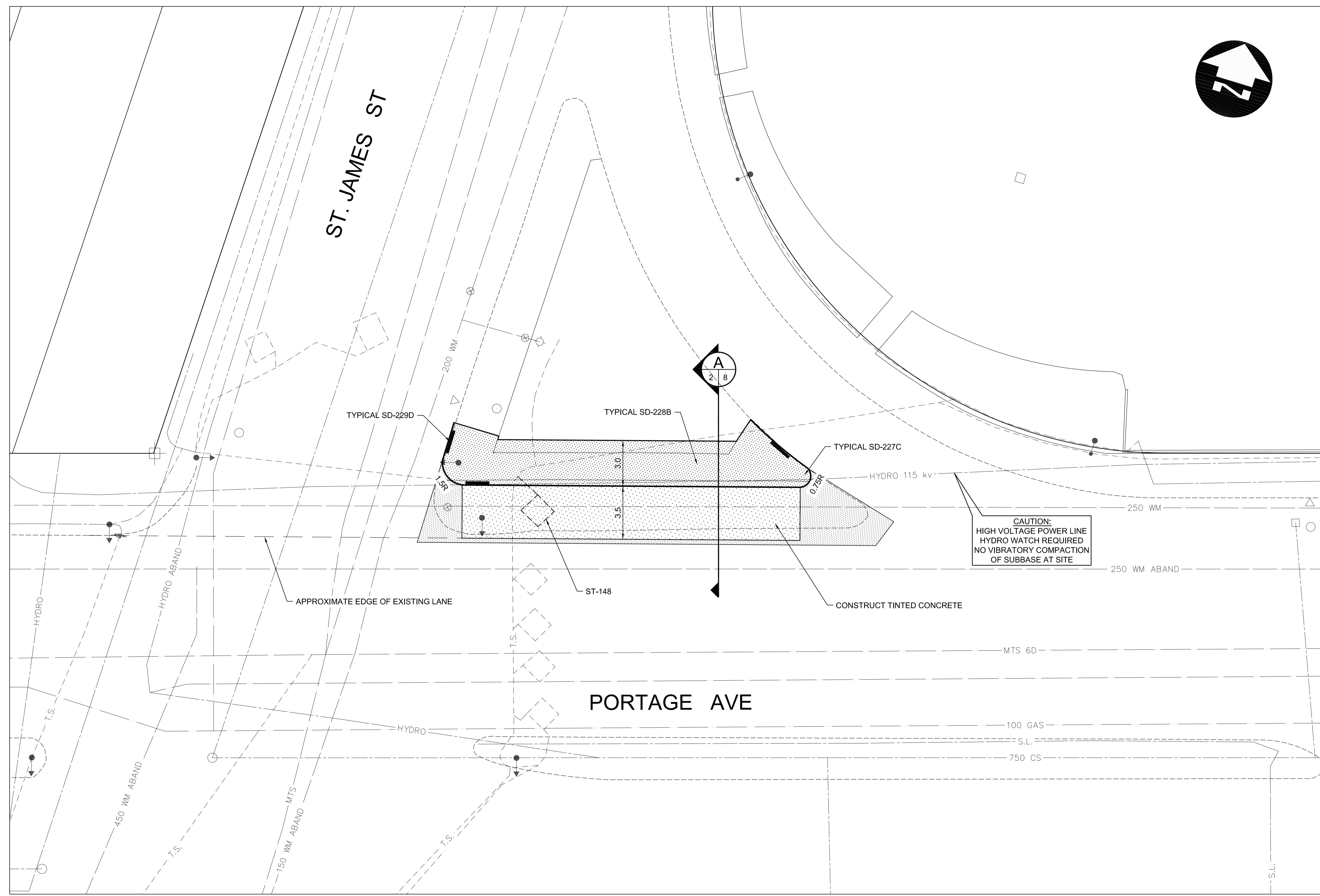


- CONSTRUCTION NOTES:**
1. CONSTRUCT NEW PAVEMENT TO GRADES AS SET BY CONTRACT ADMINISTRATOR.
  2. TRAFFIC SIGNAL APPURTENANCES TO BE RELOCATED BY OTHERS.
  3. ALL DIMENSIONS ARE TO BACK OF CURB.
  4. ISOLATE MISCELLANEOUS ITEMS IN NEW CONCRETE WORKS AS PER SD-228C.
  5. SEE SHEETS 8 & 9 FOR TYPICAL SECTIONS AND DETAILS.

**METRIC**

WHOLE NUMBERS INDICATE MILLIMETRES  
DECIMALIZED NUMBERS INDICATE METRES



G:\CAD\091545\Contract\Improvements\091545-PLAN.dwg

150 WM	WATERMAIN	150 WM	HYDRO	HYDRO	HYDRO	150 mm W.M.	WATERMAIN	150 mm W.M.
⊕	HYDRANT	⊕	MTS	M.T.S.	MTS	+	HYDRANT	+
⊗	VALVE	⊗		CONCRETE		⊗	VALVE	⊗
300 LDS	LAND DRAINAGE SEWER	300 LDS		ASPHALT		300 mm L.D.S.	LAND DRAINAGE SEWER	300 mm L.D.S.
250 WWS	WASTE WATER SEWER	250 WWS		PLANING		250 mm W.W.S.	WASTE WATER SEWER	250 mm W.W.S.
○	MANHOLE	●		SIDEWALK		— · — · —	PROFILE	— · — · —
□	CATCH BASIN	■		PAVING STONES		▣	NORTH/WEST GUTTER	▣
▽	CURB INLET	▽		PARTIAL DEPTH REPAIR		▤	SOUTH/EAST GUTTER	▤
— · — · —	JUNCTIONS	— · — · —		PROPERTY LINE		— · — · —	NORTH/WEST T/LANE	— · — · —
— · — · —	CULVERT	— · — · —		SURVEY BAR		— · — · —	SOUTH/EAST T/LANE	— · — · —
100 GAS	GAS	100 GAS		PARAPLEGIC RAMP		— · — · —		— · — · —
EXISTING	LEGEND-PLAN	PROPOSED	EXISTING	LEGEND-PLAN	PROPOSED	EXISTING	LEGEND-PROFILE	PROPOSED

**UNDERGROUND STRUCTURES**

SUPPLY U/G STRUCTURES COMMITTEE DATE

**NOTE:**  
LOCATION OF UNDERGROUND STRUCTURES AS SHOWN ARE BASED ON THE BEST INFORMATION AVAILABLE BUT NO GUARANTEE IS GIVEN THAT ALL EXISTING UTILITIES ARE SHOWN OR THAT THE GIVEN LOCATIONS ARE EXACT. CONFIRMATION OF EXISTENCE AND EXACT LOCATION OF ALL SERVICES MUST BE OBTAINED FROM THE INDIVIDUAL UTILITIES BEFORE PROCEEDING WITH CONSTRUCTION.

B.M. ELEV.				
2	ISSUED FOR TENDER	07-14-09	DBW	
1	ISSUED FOR REVIEW	06-12-09	DBW	
NO.	REVISIONS	DATE	BY	DATE

DESIGNED BY: SPC

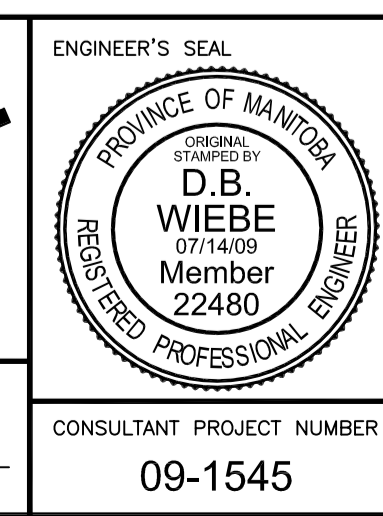
DRAWN BY: TJH

CHECKED BY: DBW

APPROVED BY:

HOR. SCALE: 1:150

VERTICAL:



**THE CITY OF WINNIPEG TRANSIT DEPARTMENT**

ON STREET TRANSIT PRIORITY IMPROVEMENTS - PHASE 3

PORTAGE CORRIDOR - PORTAGE AVE. @ ST. JAMES ST.

CITY DRAWING NUMBER: SHEET 02 OF 10

CONSULTANT DRAWING NUMBER

CONSULTANT PROJECT NUMBER: 09-1545