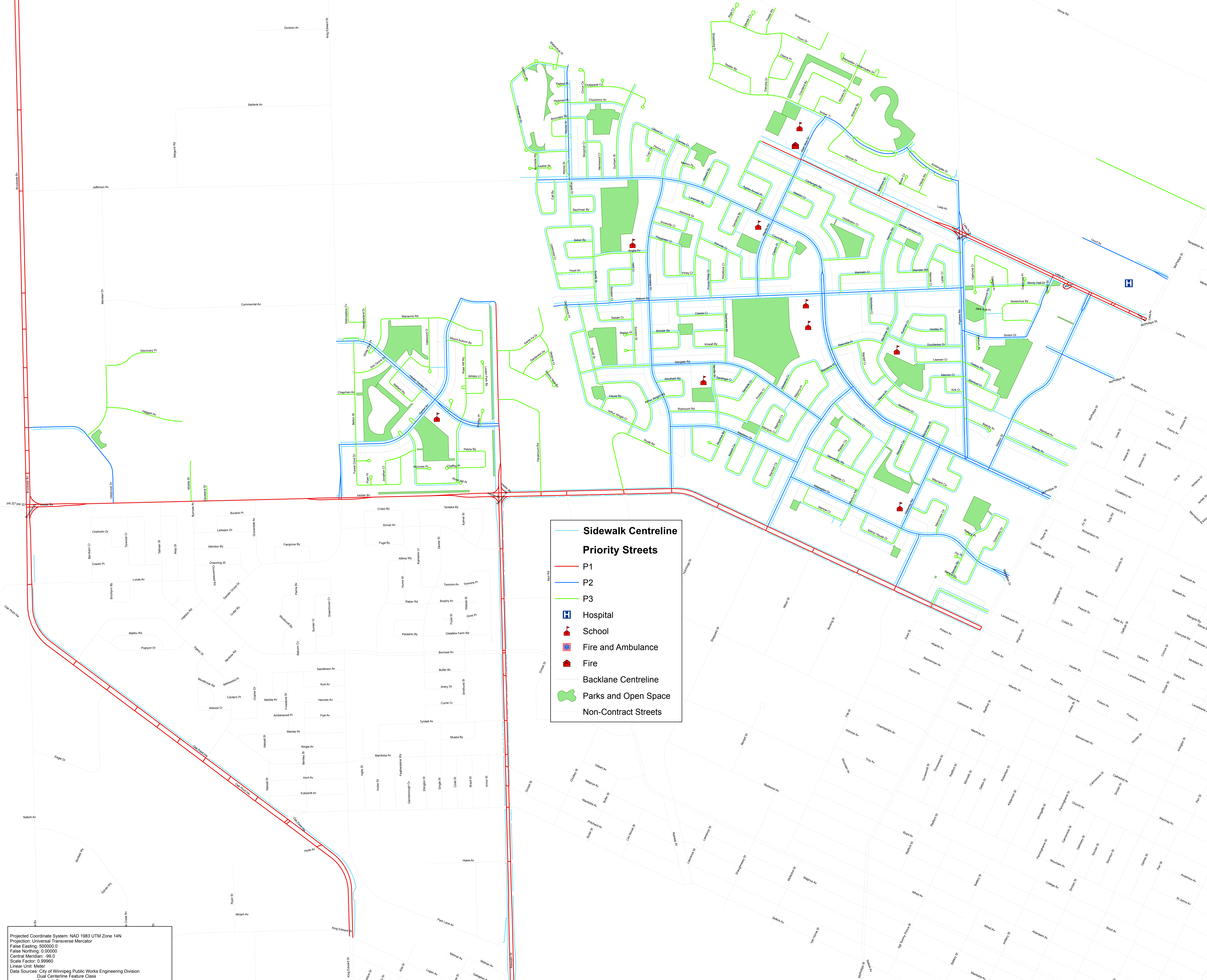
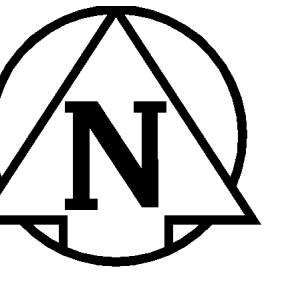


# The City of Winnipeg North Area Northwest Snow Contract Zone Sidewalks (on P1, P2 and P3 Streets)



**Sidewalk Centreline**

**Priority Streets**

- P1
- P2
- P3

**Landmarks:**

- Hospital
- School
- Fire and Ambulance
- Fire

**Other Features:**

- Backlane Centreline
- Parks and Open Space
- Non-Contract Streets

Projected Coordinate System: NAD 1983 UTM Zone 14N  
 Projection: Universal Transverse Mercator  
 False Easting: 500000.0  
 False Northing: 0.00000  
 Central Meridian: -99.0  
 Scale Factor: 0.99960  
 Linear Unit: Meter  
 Data Sources: City of Winnipeg Public Works Engineering Division  
 Dual Centreline Feature Class  
 Sidewalk Feature Class  
 Alley Centreline Feature Class  
 Parks Feature Class  
 City of Winnipeg Public Works Engineering Division  
 City of Winnipeg Public Works Parks and Open Space Division  
 Parks Feature Class

The City of Winnipeg North Area  
 Northwest Snow Contract Zone  
 Drawing 2



The City of Winnipeg  
 Public Works Department  
 Services Branch  
 106-1155 Pacific Avenue  
 engineering  
 technology services