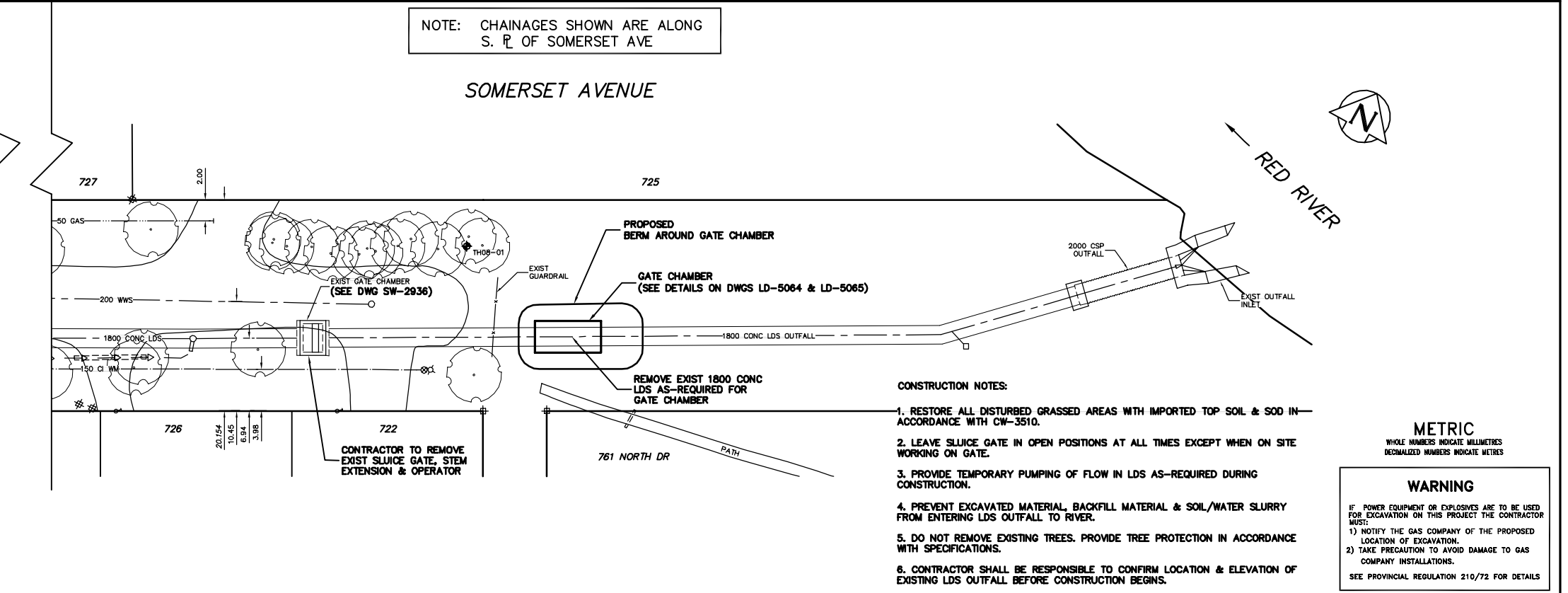
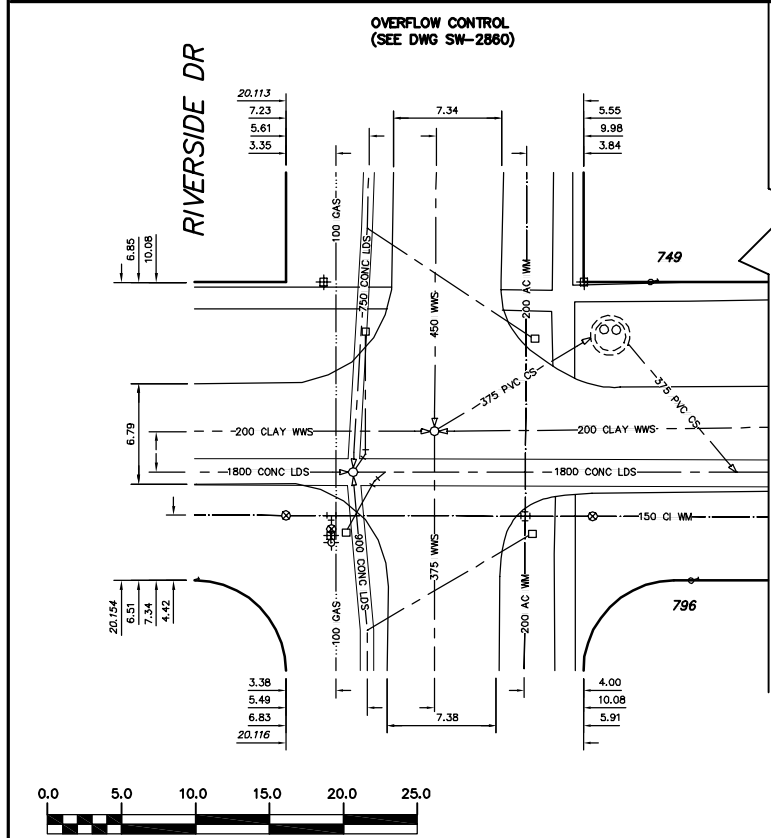


NOTE: CHAINAGES SHOWN ARE ALONG S. P. OF SOMERSET AVE



- CONSTRUCTION NOTES:**
- RESTORE ALL DISTURBED GRASSED AREAS WITH IMPORTED TOP SOIL & SOD IN ACCORDANCE WITH CW-3510.
  - LEAVE SLUICE GATE IN OPEN POSITIONS AT ALL TIMES EXCEPT WHEN ON SITE WORKING ON GATE.
  - PROVIDE TEMPORARY PUMPING OF FLOW IN LDS AS-REQUIRED DURING CONSTRUCTION.
  - PREVENT EXCAVATED MATERIAL, BACKFILL MATERIAL & SOIL/WATER SLURRY FROM ENTERING LDS OUTFALL TO RIVER.
  - DO NOT REMOVE EXISTING TREES. PROVIDE TREE PROTECTION IN ACCORDANCE WITH SPECIFICATIONS.
  - CONTRACTOR SHALL BE RESPONSIBLE TO CONFIRM LOCATION & ELEVATION OF EXISTING LDS OUTFALL BEFORE CONSTRUCTION BEGINS.

**METRIC**  
WHOLE NUMBERS INDICATE MILLIMETRES  
DECIMALIZED NUMBERS INDICATE METRES

**WARNING**  
IF POWER EQUIPMENT OR EXPLOSIVES ARE TO BE USED FOR EXCAVATION ON THIS PROJECT THE CONTRACTOR MUST:  
1) NOTIFY THE GAS COMPANY OF THE PROPOSED LOCATION OF EXCAVATION.  
2) TAKE PRECAUTION TO AVOID DAMAGE TO GAS COMPANY INSTALLATIONS.  
SEE PROVINCIAL REGULATION 210/72 FOR DETAILS

200 WM	WATERMAIN	200 WM	SL, HYDRO	150 WM	WATERMAIN	150 WM	LOCATION APPROVED	B.M. ELEV.	FIELD BOOK #	<b>CITY OF WINNIPEG</b> <b>WATER AND WASTE</b> <b>ENGINEERING DIVISION</b>	ENGINEER'S SEAL  ORIGINAL SIGNED BY K.R. ZUREK 09/06/23	<b>THE CITY OF WINNIPEG</b> <b>WATER AND WASTE DEPARTMENT</b>  2009 SOMERSET AVENUE AND WILDWOOD STREET OUTFALL GATE CHAMBER CONSTRUCTION <b>SOMERSET AVENUE</b> LDS OUTFALL GATE CHAMBER SITE PLAN	SHEET 1 OF 8  CITY DRAWING NUMBER  <b>LD-5063</b>
525 LDS	LAND DRAINAGE SEWER	525 LDS	50 GAS	300 LDS	LAND DRAINAGE SEWER	300 LDS	POSTED TO LIS		DESIGNED BY DGS CHECKED BY DGS DRAWN BY CJH APPROVED BY KZ HOR. SCALE 1:250 VERTICAL SCALE 1:50 RELEASED FOR CONSTRUCTION BID OPPORTUNITY: 468-2009 FILENAME: LD-5063.dwg PLOT DATE: 2009 06 23				
375 WWS	WASTEWATER SEWER	375 WWS	SURVEY BAR	250 WWS	WASTEWATER SEWER	250 WWS	SUPV. U/G STRUCTURES COMMITTEE			NO. 1 REVISIONS DATE BY			