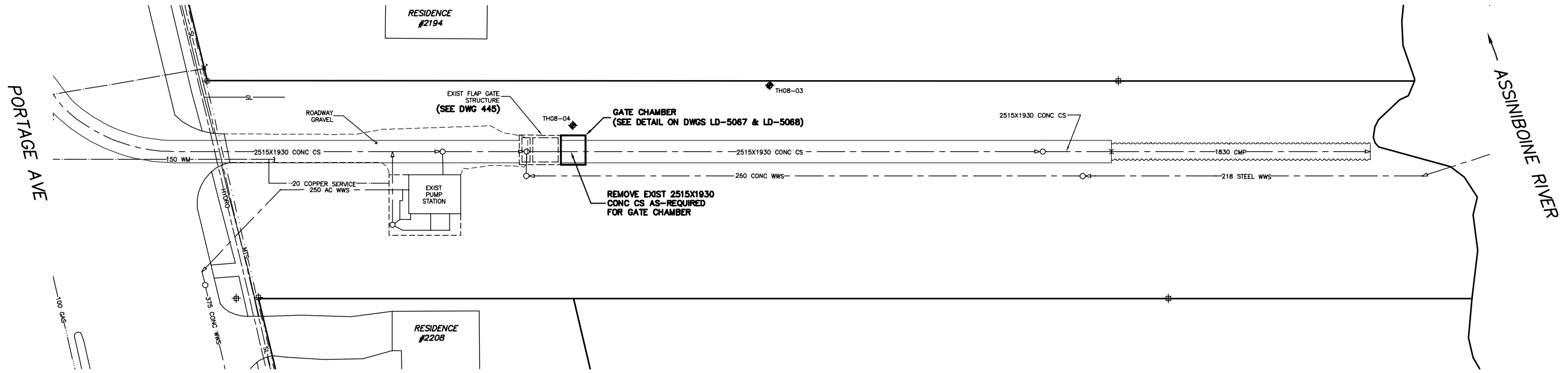


- CONSTRUCTION NOTES:**
1. RESTORE ALL DISTURBED GRASS AREAS & BERM WITH IMPORTED TOP SOIL AND SOD IN ACCORDANCE WITH CW 3510.
 2. LEAVE SLUICE VALVE IN OPEN POSITION AT ALL TIMES EXCEPT WHEN ON-SITE WORKING ON GATE.
 3. PROVIDE TEMPORARY PUMPING OF FLOW IN CS AS-REQUIRED DURING CONSTRUCTION.
 4. PREVENT EXCAVATED MATERIAL, BACKFILL MATERIAL AND SOIL / WATER SLURRY FROM ENTERING LDS OUTFALL TO THE RIVER.
 5. DO NOT REMOVE EXISTING TREES. PROVIDE TREE PROTECTION IN ACCORDANCE WITH SPECIFICATIONS.
 6. CONFIRM LOCATION AND ELEVATION OF EXISTING CS BEFORE EXCAVATING FOR GATE CHAMBER.

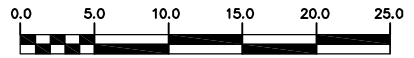
NOTE: CHAINAGES SHOWN ARE ALONG E. P. OF CONWAY ST

CONWAY STREET



METRIC
WHOLE NUMBERS INDICATE MILLIMETRES
DECIMALIZED NUMBERS INDICATE METRES

WARNING
IF POWER EQUIPMENT OR EXPLOSIVES ARE TO BE USED FOR EXCAVATION ON THIS PROJECT THE CONTRACTOR MUST:
1) NOTIFY THE GAS COMPANY OF THE PROPOSED LOCATION OF EXCAVATION.
2) TAKE PRECAUTION TO AVOID DAMAGE TO GAS COMPANY INSTALLATIONS.
SEE PROVINCIAL REGULATION 210/72 FOR DETAILS



200 WM	WATERMAIN	200 WM	SL, HYDRO	150 WM	WATERMAIN	150 WM
⊕	HYDRANT	⊕	MTS	⊕	HYDRANT	⊕
⊙	VALVE	⊙	TRAFFIC SIGNALS	⊙	VALVE	⊙
525 LDS	LAND DRAINAGE SEWER	525 LDS	GAS	300 LDS	LAND DRAINAGE SEWER	300 LDS
375 WWS	WASTEWATER SEWER	375 WWS	SURVEY BAR	250 WWS	WASTEWATER SEWER	250 WWS
○	MANHOLE	●	FENCE	⊗	PROFILE	⊗
□	CATCH BASIN	■	POLE - HYDRO, MTS	⊖	GROUND ABOVE PIPE	⊖
▽	CURB INLET	▽	CURB STOP	⊕	? DITCH (NORTH & WEST)	⊕
⊕	JUNCTIONS	⊕	GUY ANCHOR	⊕	? DITCH (SOUTH & EAST)	⊕
⊕	CULVERT	⊕	LIGHT STANDARD	⊕	GUTTER (NORTH & WEST)	⊕
⊕	ANODE	⊕	TREE	⊕	GUTTER (SOUTH & EAST)	⊕
EXISTING	LEGEND-PLAN	PROPOSED	EXISTING	LEGEND-PLAN	PROPOSED	EXISTING
---	LEGEND-PROFILE	---	---	LEGEND-PROFILE	---	---

LOCATION APPROVED
UNDERGROUND STRUCTURES

SUPPLY U/G STRUCTURES COMMITTEE DATE

NOTE:
LOCATION OF UNDERGROUND STRUCTURES AS SHOWN ARE BASED ON THE BEST INFORMATION AVAILABLE BUT NO GUARANTEE IS GIVEN THAT THE GIVEN LOCATIONS ARE EXACT. CONFIRMATION OF EXISTENCE AND EXACT LOCATION OF ALL SERVICES MUST BE OBTAINED FROM THE INDIVIDUAL UTILITIES BEFORE PROCEEDING WITH CONSTRUCTION.

B.M. ELEV. FIELD BOOK #

POSTED TO LIS

NO. REVISIONS DATE BY

CITY OF WINNIPEG
WATER AND WASTE
ENGINEERING DIVISION

DESIGNED BY DGS CHECKED BY DGS

DRAWN BY WKT/CJH APPROVED BY KZ

HOR. SCALE 1:250
VERTICAL 1:50

RELEASED FOR CONSTRUCTION

DATE 2009 06 23 DATE

ENGINEER'S SEAL

ORIGINAL SIGNED BY K.R. ZUREK
09/06/23

BID OPPORTUNITY: 469-2009
FILENAME: LD-5066.dwg
PLOT DATE: 2009 06 23

THE CITY OF WINNIPEG
WATER AND WASTE DEPARTMENT

2009 CONWAY STREET ADDITION OUTFALL
GATE CHAMBER CONSTRUCTION
CONWAY STREET
CS OUTFALL GATE CHAMBER
SITE PLAN

SHEET 1 OF 5
CITY DRAWING NUMBER
LD-5066