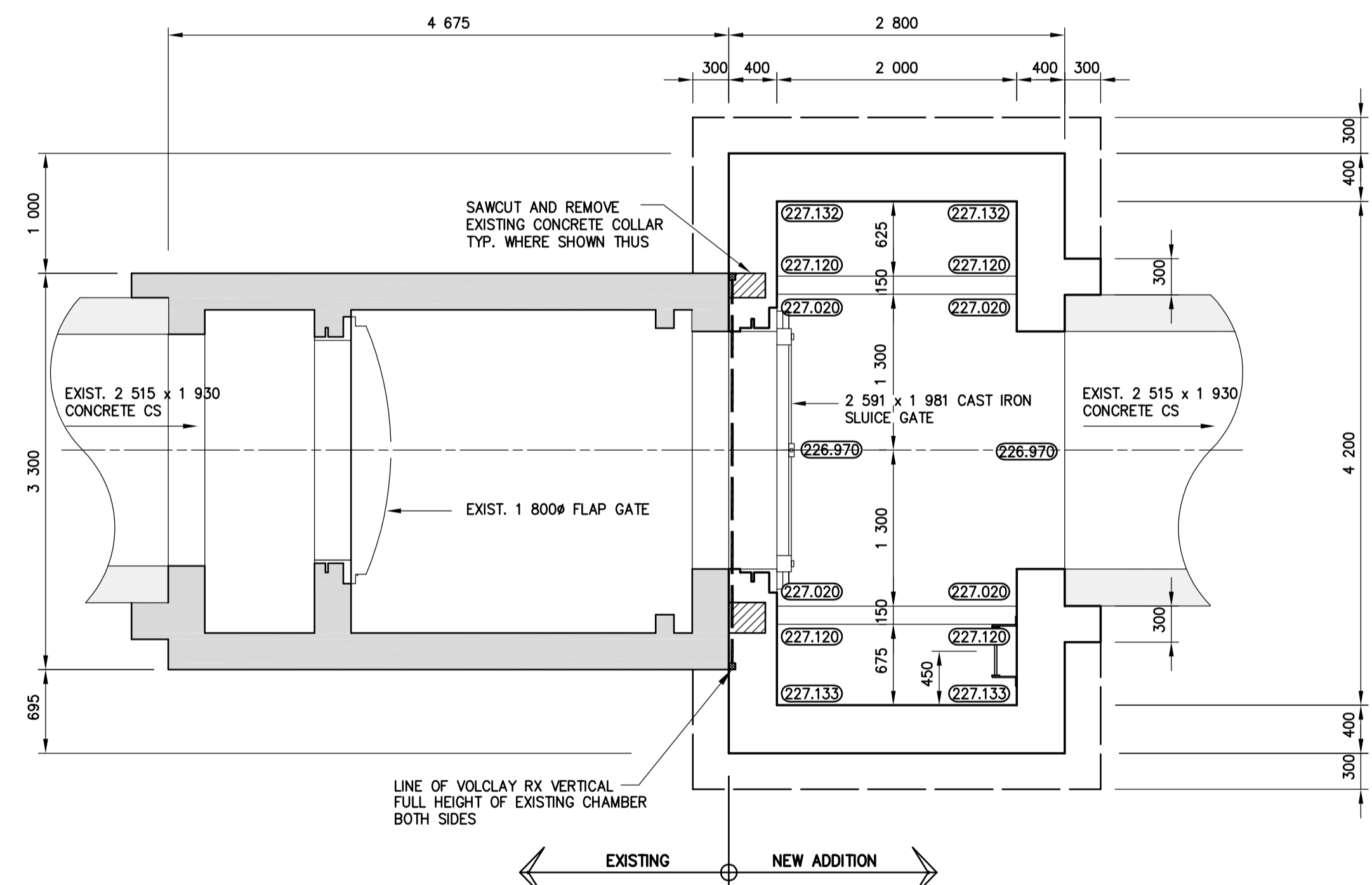
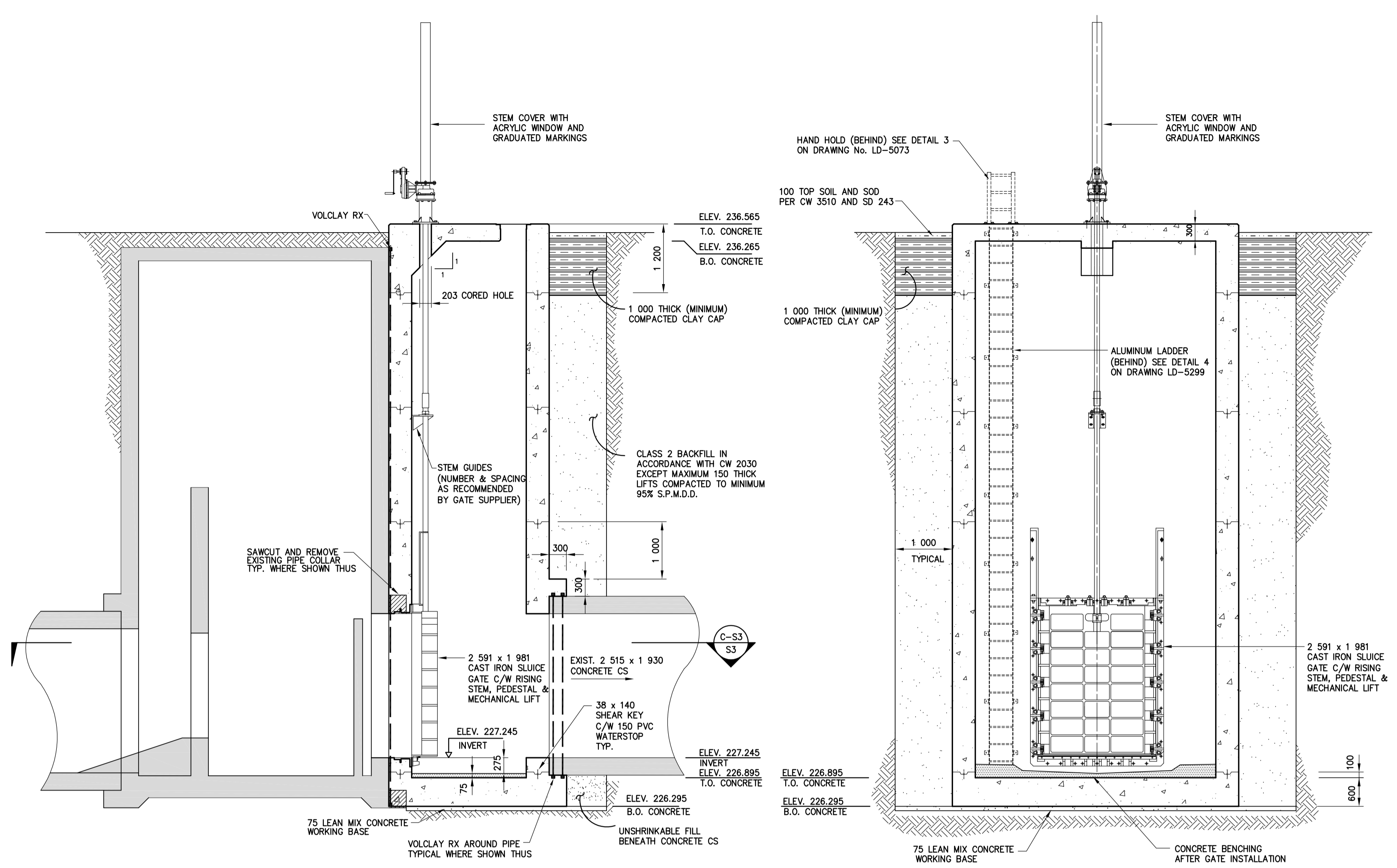


ROOF PLAN
1:40



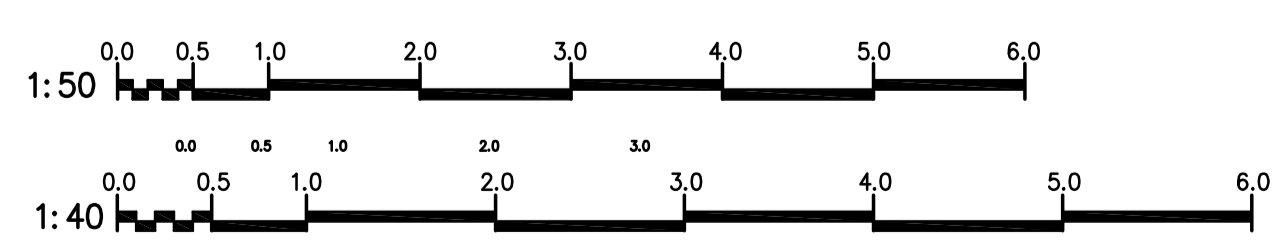
SECTION C-S3
1:40



SECTION A-S3
1:50

SECTION B-S3
1:50

NOTE: CONTRACTOR SHALL CONFIRM ACTUAL PIPE INVERT AND NOTIFY CONTRACT ADMINISTRATOR OF ANY DISCREPANCY WITH THE INVERTS SHOWN. CONTRACTOR TO CONTACT CITY OF WINNIPEG, WATER AND WASTE DEPARTMENT, FOR CURRENT GROUNDWATER ELEVATION.



METRIC
WHOLE NUMBERS INDICATE MILLIMETRES
DECIMALIZED NUMBERS INDICATE METRES

A-B
C
A = DETAIL/SECTION No.
B = DRAWING WHERE SHOWN
C = DRAWING WHERE TAKEN

		MMM Group Limited Suite 111-53 Lombard Ave. Winnipeg, MB R3B 3E1 T. 204.943.3178 F. 204.943.4948 www.mmm.ca	
DESIGNED BY	GK	CHECKED BY	JPL
DRAWN BY	RCS	APPROVED BY	JPL
HOR. SCALE	AS SHOWN	RELEASED FOR CONSTRUCTION	
NO.	REVISIONS	DATE	BY
1	RE-ISSUED FOR TENDER	09.06.18	GK
0	ISSUED FOR TENDER	08.08.27	GK

ENGINEER'S SEAL

 BID OPPORTUNITY 469-2009
 PLOT DATE: 09.06.18

THE CITY OF WINNIPEG
 WATER AND WASTE DEPARTMENT
 2009 CONWAY STREET ADDITION
 OUTFALL GATE CHAMBER CONSTRUCTION
CONWAY STREET
 CS OUTFALL GATE CHAMBER
 CONCRETE DETAILS

CONSULTANT DRAWING NUMBER
42012-S3
 SHEET **2** OF **5**
 CITY DRAWING NUMBER
LD-5067

APEGM
 Certificate of Authorization
 MMM Group Limited
 No. 4531 Date: 09.06.18

Jun 18, 2009 - 2:53pm
 P:\42000 - 42099\42012 2009 Outfall Gate Chamber Construction and Upgrades Drawings\09 06 18\42012 Conway S3 & S4 Concrete & Reinforcing 09 06 18.dwg - rbc-concrete