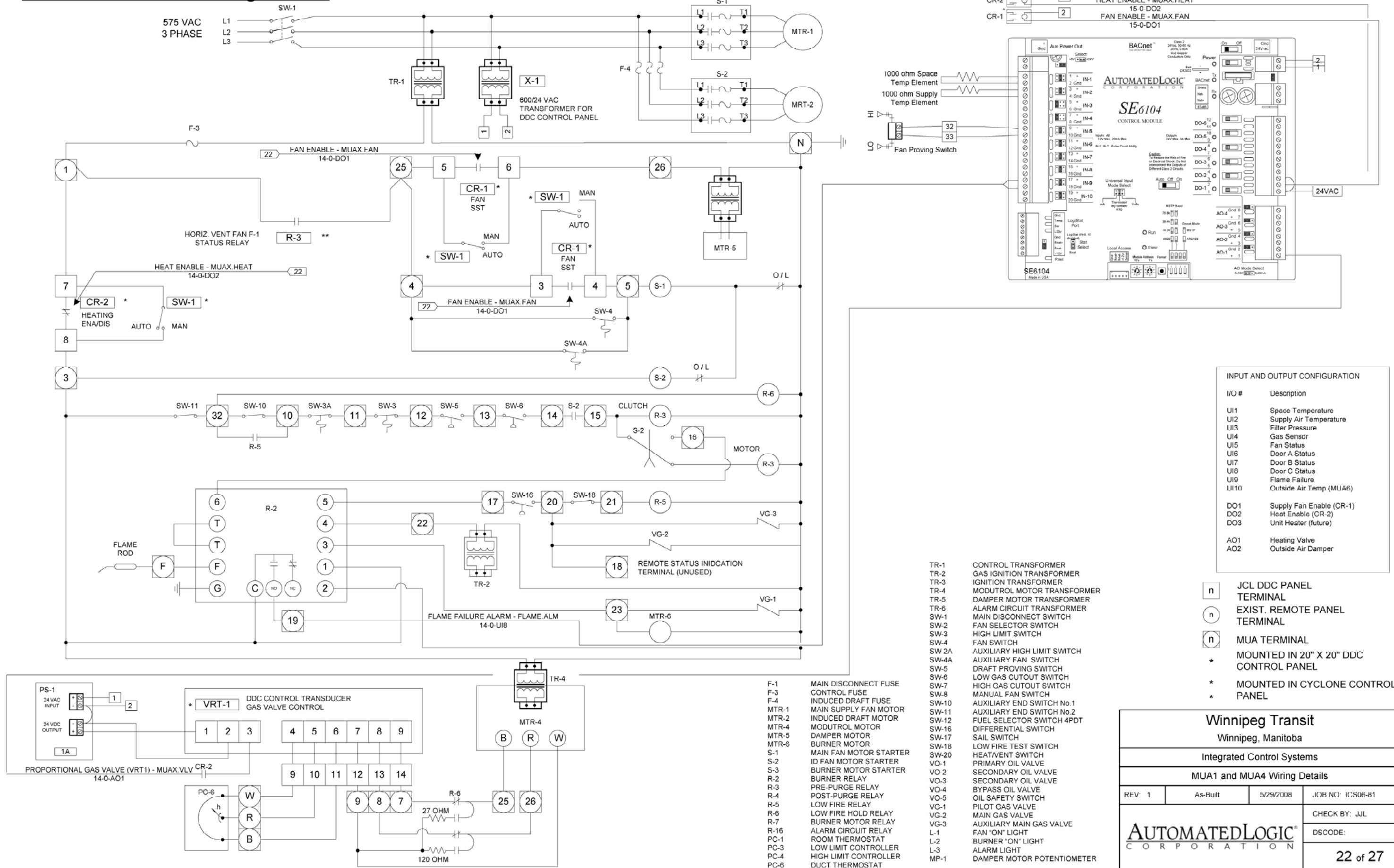


MUA1 and MUA4 Wiring Details



- TR-1 CONTROL TRANSFORMER
- TR-2 GAS IGNITION TRANSFORMER
- TR-3 IGNITION TRANSFORMER
- TR-4 MODUTROL MOTOR TRANSFORMER
- TR-5 DAMPER MOTOR TRANSFORMER
- TR-6 ALARM CIRCUIT TRANSFORMER
- SW-1 MAIN DISCONNECT SWITCH
- SW-2 FAN SELECTOR SWITCH
- SW-3 HIGH LIMIT SWITCH
- SW-4 FAN SWITCH
- SW-2A AUXILIARY HIGH LIMIT SWITCH
- SW-4A AUXILIARY FAN SWITCH
- SW-5 DRAFT PROVING SWITCH
- SW-6 LOW GAS CUTOUT SWITCH
- SW-7 HIGH GAS CUTOUT SWITCH
- SW-8 MANUAL FAN SWITCH
- SW-10 AUXILIARY END SWITCH No.1
- SW-11 AUXILIARY END SWITCH No.2
- SW-12 FUEL SELECTOR SWITCH 4PDT
- SW-16 DIFFERENTIAL SWITCH
- SW-17 SAIL SWITCH
- SW-18 LOW FIRE TEST SWITCH
- SW-20 HEAT/VENT SWITCH
- VO-1 PRIMARY OIL VALVE
- VO-2 SECONDARY OIL VALVE
- VO-3 SECONDARY OIL VALVE
- VO-4 BYPASS OIL VALVE
- VO-5 OIL SAFETY SWITCH
- VG-1 PILOT GAS VALVE
- VG-2 MAIN GAS VALVE
- VG-3 AUXILIARY MAIN GAS VALVE
- L-1 FAN "ON" LIGHT
- L-2 BURNER "ON" LIGHT
- L-3 ALARM LIGHT
- MP-1 DAMPER MOTOR POTENTIOMETER

I/O #	Description
UI1	Space Temperature
UI2	Supply Air Temperature
UI3	Filter Pressure
UI4	Gas Sensor
UI5	Fan Status
UI6	Door A Status
UI7	Door B Status
UI8	Door C Status
UI9	Flame Failure
UI10	Outside Air Temp (MUA6)
DO1	Supply Fan Enable (CR-1)
DO2	Heat Enable (CR-2)
DO3	Unit Heater (future)
AO1	Heating Valve
AO2	Outside Air Damper

Winnipeg Transit
Winnipeg, Manitoba

Integrated Control Systems

MUA1 and MUA4 Wiring Details

REV: 1	As-Built	5/29/2008	JOB NO: ICS06-81
			CHECK BY: JJJ
AUTOMATEDLOGIC CORPORATION			DISCODE:
			22 of 27