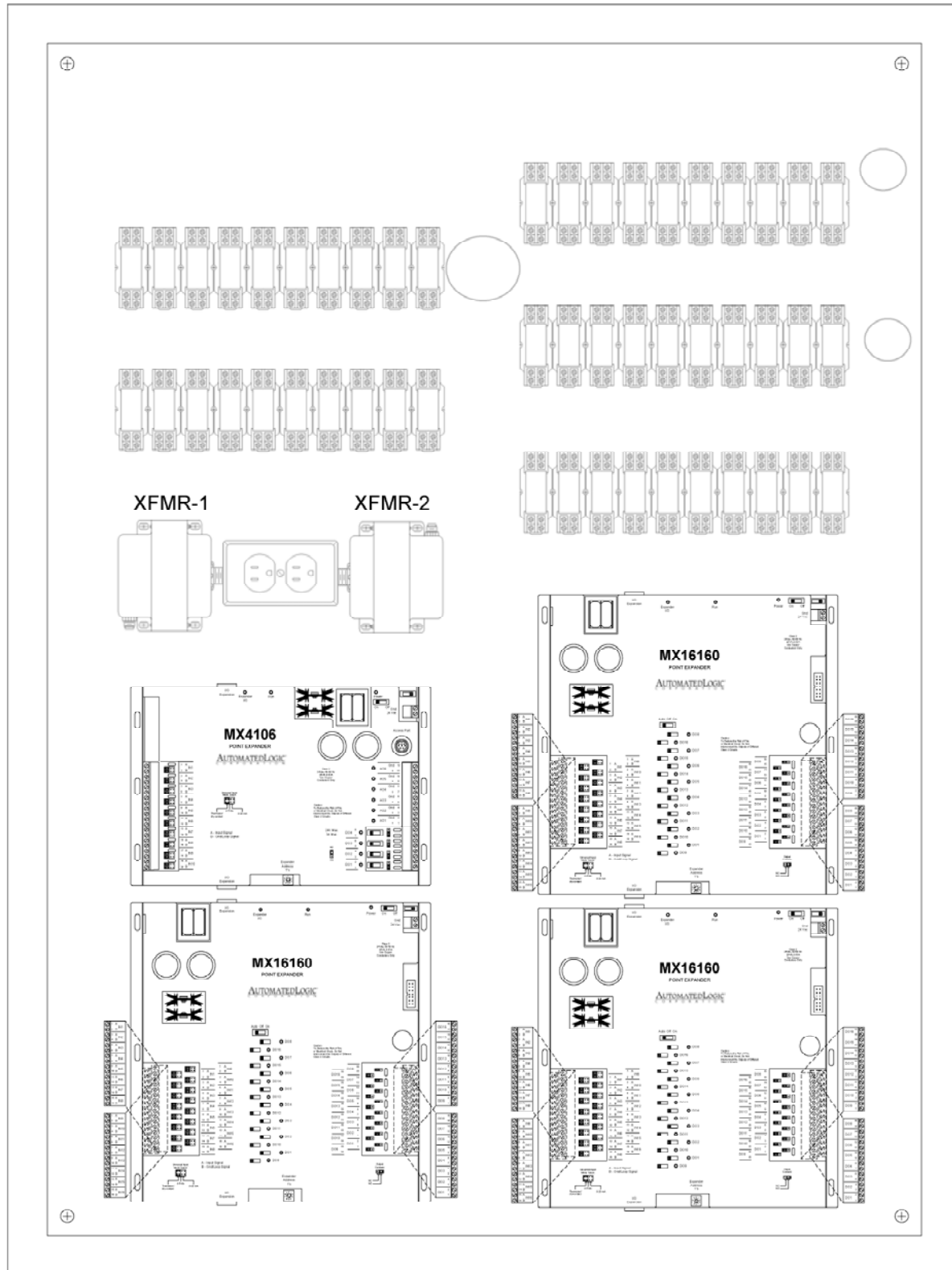
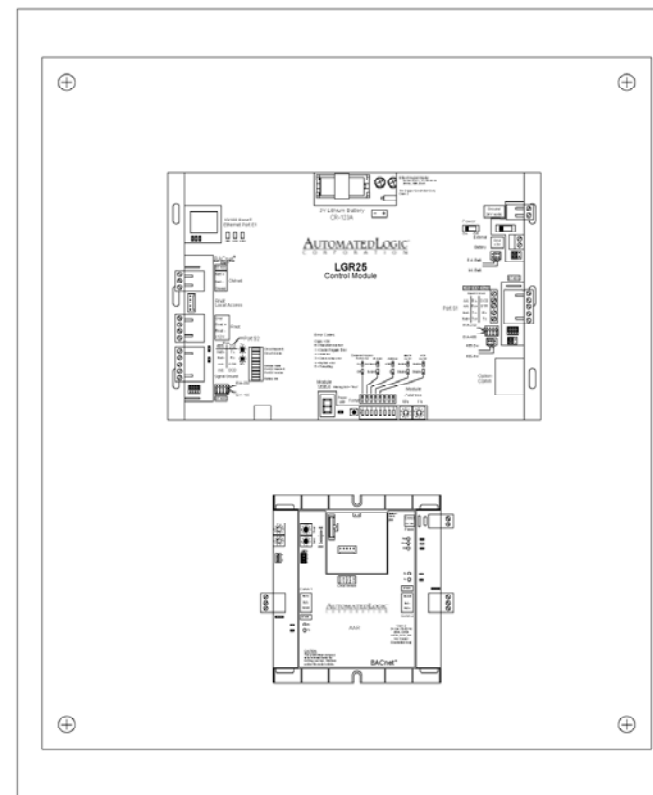


# EF Control Panel Layouts

DDC Control Panel 2



DDC Control Panel 1



Note: XFMR-1 powers the ALC controllers  
 XFMR-2 powers the IDEC relay outputs  
 XFMR-3 powers the LGR and AAR controllers

<b>Winnipeg Transit</b> Winnipeg, Manitoba			
Integrated Control Systems			
EF Control Panel Layouts			
REV: 1	As-Built	5/29/2008	JOB NO: ICS06-81
<b>AUTOMATEDLOGIC</b> CORPORATION			CHECK BY: JJJ
			DSCODE:
			26 of 27