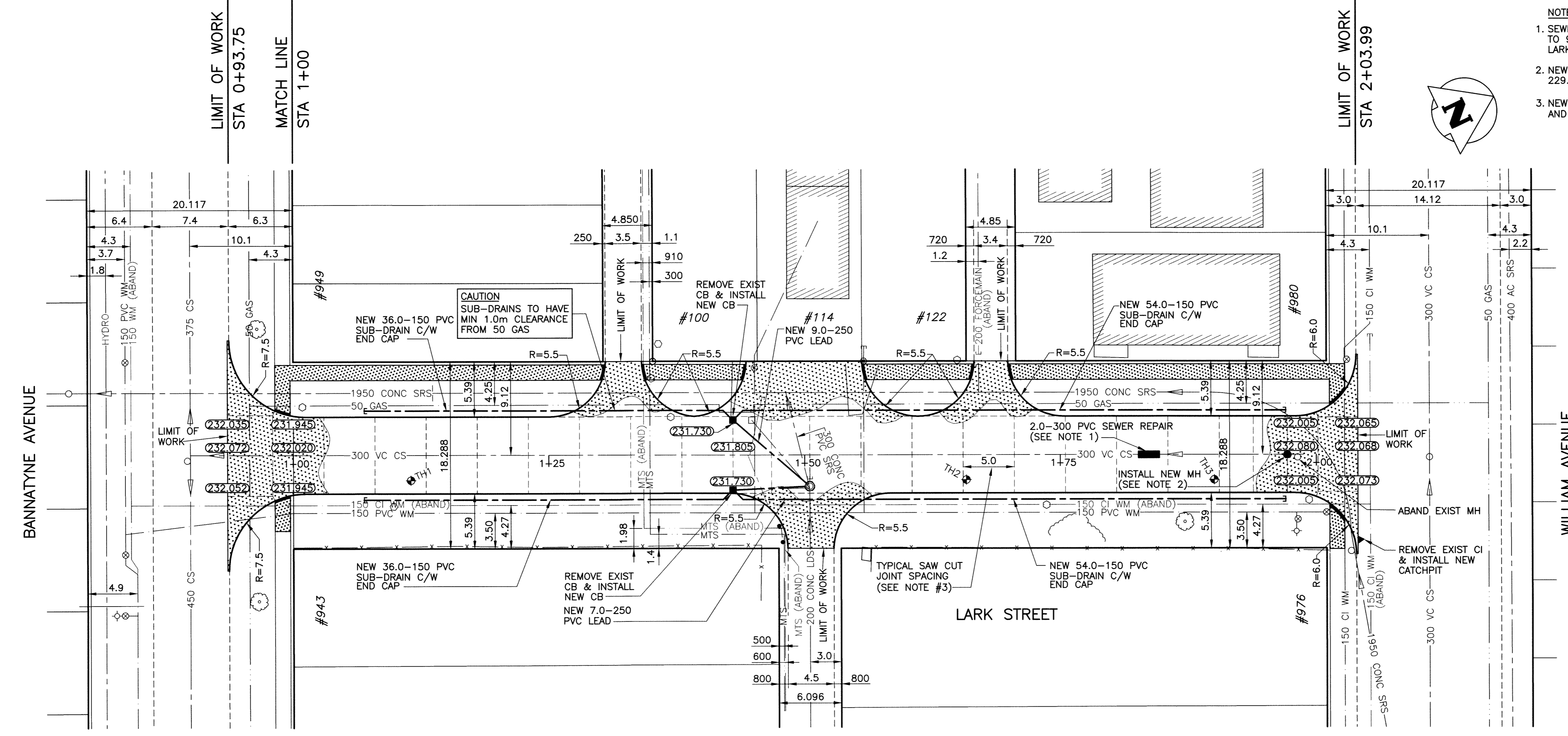


- NOTE:**
- SEWER EXTERNAL POINT REPAIR AT WATER SERVICE CROSSING IS LOCATED 93.0m TO 95.0m EAST OF MANHOLE LOCATED AT INTERSECTION OF BANNATYNE AVE AND LARK ST. INVERT ELEVATION AT REPAIR LOCATION IS 229.360m APPROX.
 - NEW MANHOLE INSTALLATION TO MATCH SEWER INVERT ELEVATION OF 229.400m APPROX.
 - NEW SAWN CONCRETE JOINTS TO BE LOCATED ACCORDING TO C.O.W. SD-218A AND OTHER DETAILS AS INDICATED IN THE C.O.W. SPECIFICATIONS.

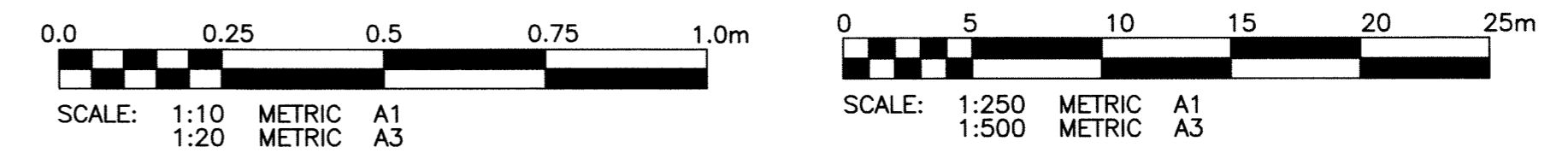


PROPERTY LIMITS DELINEATION
DELINEATION OF PROPERTY LIMITS AS SHOWN ON THIS DWG DOES NOT REPRESENT A "LEGAL SURVEY". KGS GROUP MAKES NO REPRESENTATION OR WARRANTY AS TO THE ACCURACY OF PROPERTY LIMITS DELINEATED ON THIS DWG, NOR ON THE DIMENSIONAL ACCURACY OF DWG FEATURES RELATIVE TO THOSE PROPERTY LIMITS.

WARNING

- NOTIFY THE GAS COMPANY OF THE PROPOSED LOCATION OF EXCAVATION.
- TAKE PRECAUTION TO AVOID DAMAGE TO GAS COMPANY INSTALLATIONS.
- SEE PROVINCIAL REGULATION 210/72 FOR DETAILS.

METRIC
WHOLE NUMBERS INDICATE MILLIMETRES
DECIMALIZED NUMBERS INDICATE METRES



PROJECTS\2008\08-0107-13\DWG\MUN\LARK\LARK-PLOT.DWG
PLOT 1:1 (A-1)

EXISTING	LEGEND-PLAN	PROPOSED	EXISTING	LEGEND-PLAN	PROPOSED	EXISTING	LEGEND-PROFILE	PROPOSED
300 LBS	LAND DRAINAGE SEWER	300 LBS	CONC SAW CUT JOINT	---				
250 WWS	WASTE WATER SEWER	250 WWS	TEST HOLE	⊕				
	GAS		GUY WIRE	— —				
	HYDRO		LIGHT STANDARD	⊙				
	M.T.S.		BACK OF CURB	— —				
150 WM	WATERMAIN	150 WM	CONCRETE	▨				
	HYDRANT		ASPHALT	▨				
	VALVE		SIDEWALK	▨				
	MANHOLE		PROPERTY LINE	— —				
	CATCH BASIN		SURVEY BAR	— —				
	CURB INLET		GEODETIC BENCHMARK	⊕				
	POLES		ELEVATION	231.334				
				(32.231)				

LOCATION APPROVED UNDERGROUND STRUCTURES

SUPV. U/G STRUCTURES COMMITTEE DATE

NOTE:
LOCATION OF UNDERGROUND STRUCTURES AS SHOWN ARE BASED ON THE BEST INFORMATION AVAILABLE BUT NO GUARANTEE IS GIVEN THAT ALL EXISTING UTILITIES ARE SHOWN OR THAT THE GIVEN LOCATIONS ARE EXACT. CONFIRMATION OF EXISTENCE AND EXACT LOCATION OF ALL SERVICES MUST BE OBTAINED FROM THE INDIVIDUAL UTILITIES BEFORE PROCEEDING WITH CONSTRUCTION.

B.M. 36-038 ELEV. 232.827m	N.E. COR. ARLINGTON ST. & WILLIAM AVE. TBLT. IN S. CONC. FOUNDATION OF NO. 883 WILLIAM AVE., 1.3m W. & 0.2m BELOW BRICKS OF S.E. COR. OF BLDG.		
NO.	REVISIONS	DATE	BY
0	ISSUED FOR TENDER	09/06/2009	DMW

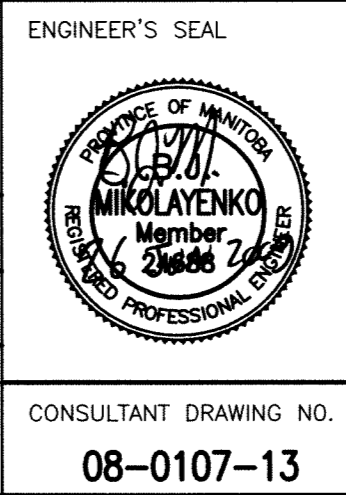
KGS GROUP CONSULTING ENGINEERS & PROJECT MANAGERS
WINNIPEG (204) 896-1209
THUNDER BAY (807) 345-2233

DESIGNED BY: BJM
DRAWN BY: DMW
CHECKED BY: CR
APPROVED BY: [Signature]

HOR. SCALE: 1:250
VERTICAL: 1:50

RELEASED FOR CONSTRUCTION: [Signature]

DATE: 04/02/09



THE CITY OF WINNIPEG
PUBLIC WORKS DEPARTMENT
TRANSPORTATION ENGINEERING DIVISION

PROJECT TITLE: **LARK STREET STREET RECONSTRUCTION**
BANNATYNE AVE TO WILLIAM AVE
STA 0+93.75 TO STA 2+03.99

SHEET **04** OF **08**
COMPUTER FILE NAME: LARK-PLOT
CITY DRAWING NUMBER: **0004**

CONSULTANT DRAWING NO. **08-0107-13**