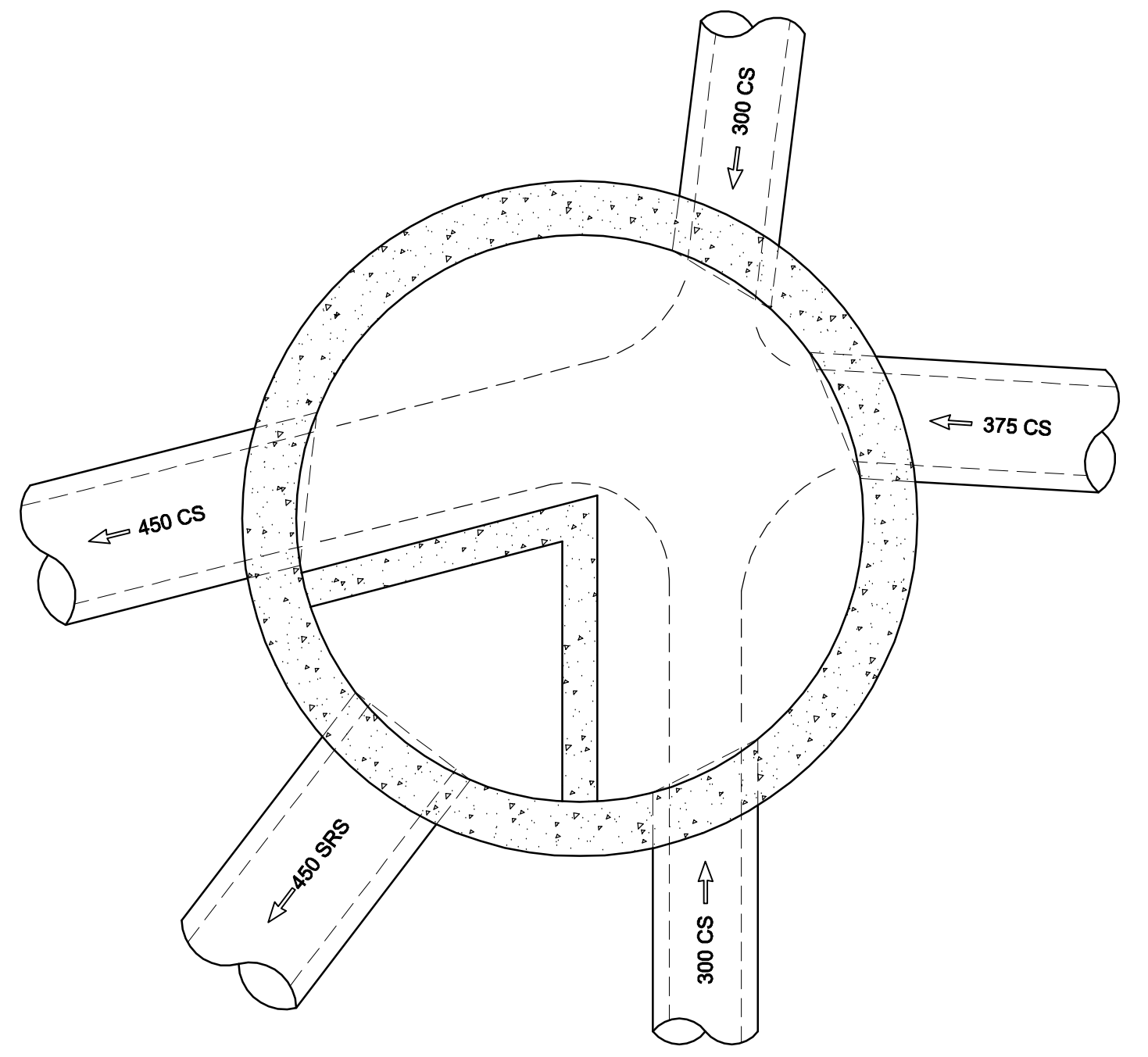


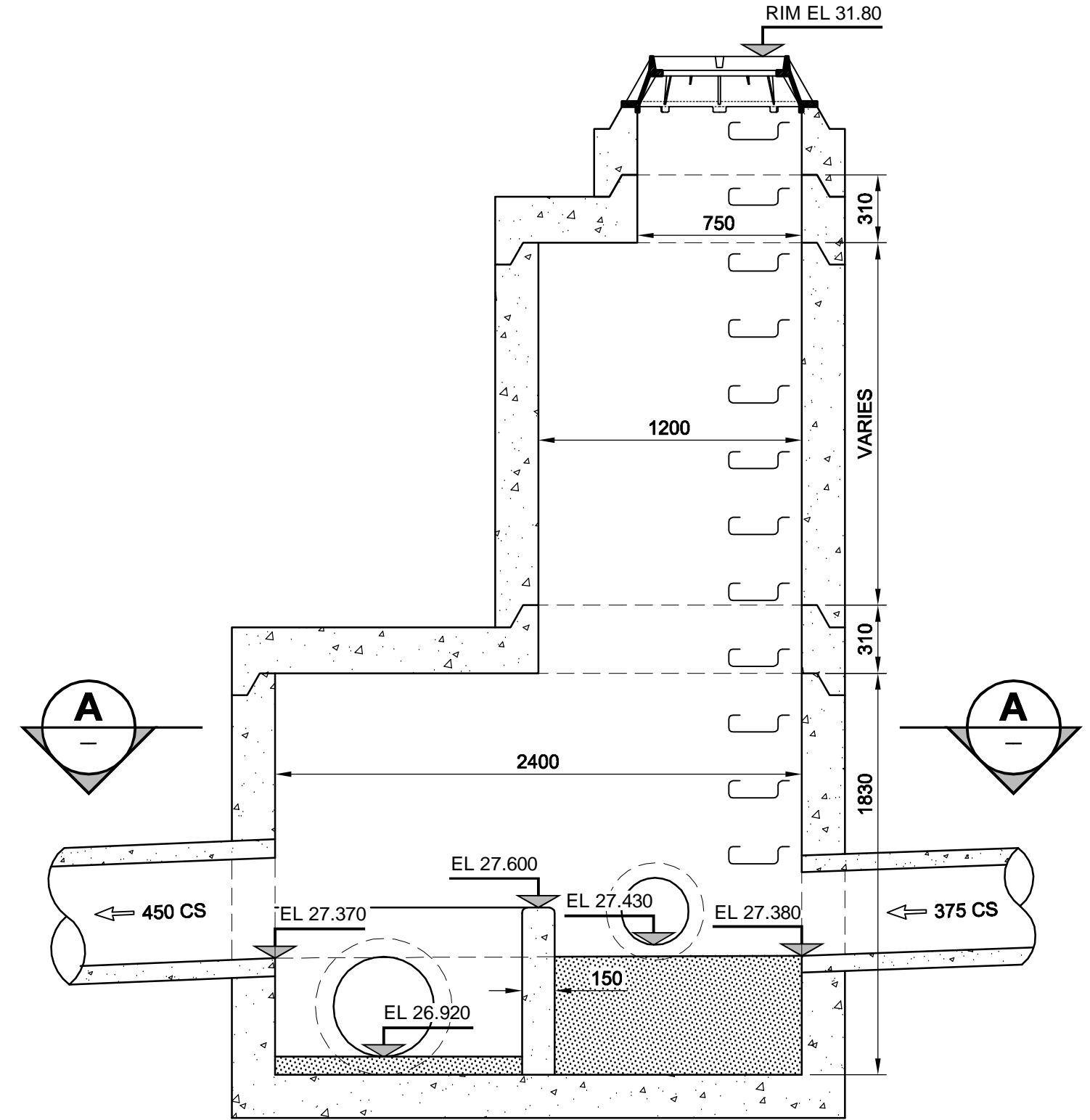
WARNING
IF POWER EQUIPMENT OR EXPLOSIVES ARE TO BE USED FOR EXCAVATION ON THIS PROJECT, THE CONTRACTOR MUST:
1) NOTIFY THE GAS COMPANY OF THE PROPOSED LOCATION OF EXCAVATION.
2) TAKE PRECAUTION TO AVOID DAMAGE TO GAS COMPANY INSTALLATIONS.
SEE PROVINCIAL REGULATION 140/92 FOR DETAILS



- CONSTRUCTION NOTES:**
- FOR DETAILED TEST HOLE INFORMATION, SEE SPECIFICATION.
 - THE LOCATION OF ALL SERVICES IS TO BE CONFIRMED IN THE FIELD.
 - INSTALL NEW SEWERS AND CATCHBASIN LEADS BY TRENCHLESS METHODS WHEREVER POSSIBLE.
 - RENEW/REHABILITATE CATCHBASINS & RENEW CATCHBASIN LEADS WHERE NOTED.



SECTION A
SCALE 1:25



MANHOLE 24 OVERFLOW DETAIL
SCALE 1:25

TYPICAL MANHOLE REQUIREMENTS AS PER SD-010

APEGM
Certificate of Authorization
AECOM Canada Ltd.
No. 4671 Date: July 7, 2009

BID OPPORTUNITY NO. 499-2009

150 WM	WATERMAIN	150 WM	CURB STOP	150 WM	WATERMAIN	150 WM	LOCATION APPROVED
	HYDRANT		REDUCER		HYDRANT		UNDERGROUND STRUCTURES
	VALVE		COUPLING		VALVE		SUPR. U/G STRUCTURES DATE COMMITTEE
	LAND DRAINAGE SEWER		ANODE		LAND DRAINAGE SEWER		NOTE: LOCATION OF UNDERGROUND STRUCTURES AS SHOWN ARE BASED ON THE BEST INFORMATION AVAILABLE. BUT NO GUARANTEE IS GIVEN THAT ALL EXISTING UTILITIES ARE SHOWN OR THAT THE GIVEN LOCATIONS ARE EXACT. CONFIRMATION OF EXISTENCE AND EXACT LOCATION OF ALL SERVICES MUST BE OBTAINED FROM THE INDIVIDUAL UTILITIES BEFORE PROCEEDING WITH CONSTRUCTION.
	WASTE WATER SEWER		MTS		WASTE WATER SEWER		
	MANHOLE		GAS		PAVEMENT CROWN		
	CATCH BASIN		TESTHOLE		N/W PROPERTY LINE		
	CURB INLET		LAMP STANDARD		S/E PROPERTY LINE		
	CULVERT		TREE		N/W GUTTER		
	PIPE ABANDONMENTS				S/E GUTTER		
	SURVEY BAR						
	EXISTING		LEGEND - PLAN		LEGEND - PROFILE		

NO.	REVISIONS	DATE	BY
0	ISSUED FOR CONSTRUCTION	09/07/06	KMB

DESIGNED BY	GEB	CHECKED BY	FMI
DRAWN BY	KMB	APPROVED BY	BTW
HOR. SCALE	1:250	RELEASED FOR CONSTRUCTION	C. Boulet
VERT. SCALE	1:50	DATE	July 7, 2009

PROFESSIONAL'S SEAL
ISSUE / REVISION 0
ISSUED FOR CONSTRUCTION
WAS SEALED BY
A. NAGY
AND DATED
July 7, 2009
CONSULTANT DRAWING NO.
D265-177-05_01-C-1015_RX.dwg

THE CITY OF WINNIPEG
WATER AND WASTE DEPARTMENT
ALEXANDER/BANNATYNE
COMBINED SEWER RELIEF
CONTRACT 5
HIGGINS AVENUE
MATCHLINE 0+850
TO MATCHLINE 0+940
SHEET 15 OF 20
CITY DRAWING NUMBER
LD-5417
REV 0