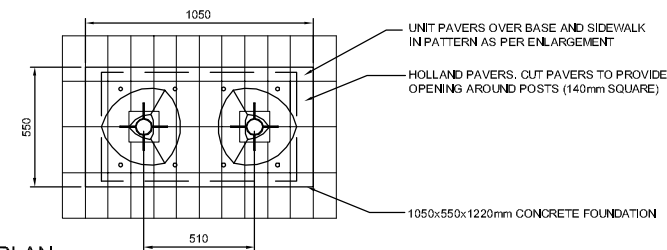


BUS SHELTER FOUNDATION PLAN

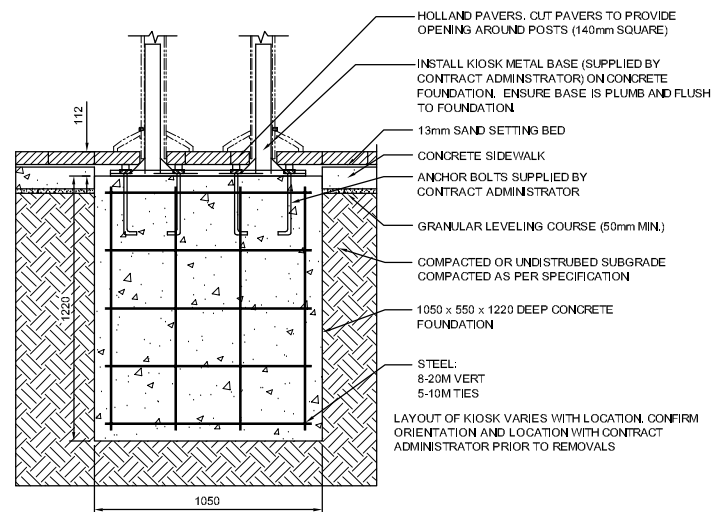
NOTE: CONFIRM FINAL CROSS SLOPE WITH CONTRACT ADMINISTRATOR PRIOR TO LAYOUT CONTRACTOR TO REPORT ANY DISCREPANCIES TO CONTRACT ADMINISTRATOR PRIOR TO LAYOUT.

CONTRACTOR TO VERIFY EXACT DIMENSIONS OF SHELTER PRIOR TO LAYOUT WITH SHELTER MANUFACTURER, CONTRACT ADMINISTRATOR TO SUPPLY CONTACT INFORMATION

1 HEATED SHELTER FOUNDATION
3/7 5 NTS

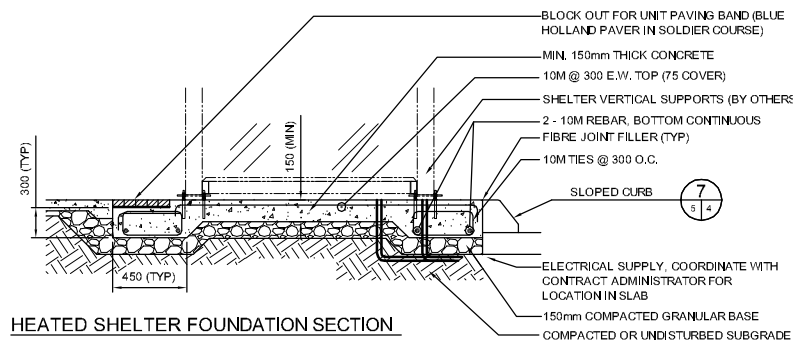


PLAN



SECTION

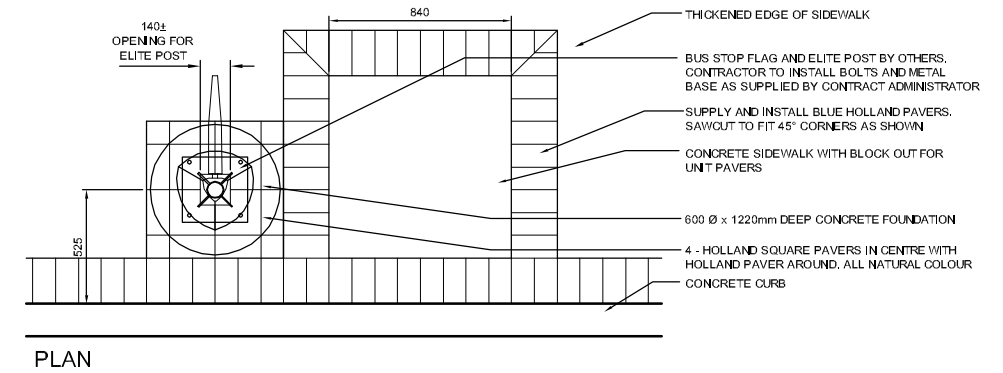
3 INFORMATION KIOSK FOUNDATION
NTS



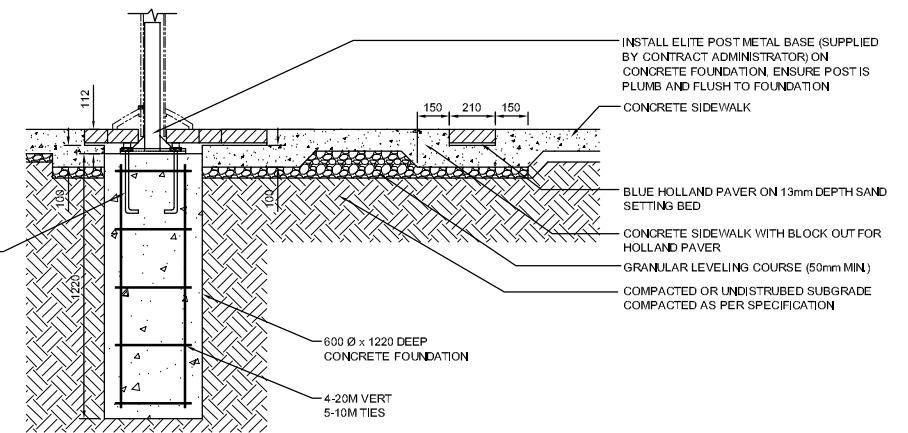
HEATED SHELTER FOUNDATION SECTION

CONCRETE FOUNDATION CONSTRUCTION NOTES

- REINFORCING STEEL**
 - CSA G30 GR. 400W
 - VERTICAL BARS FULL LENGTH OF PILE (STAINLESS STEEL) SUPPLIED BY CONTRACT ADMINISTRATOR
 - HOT DIP GALVANIZED
- ANCHOR BOLTS**
 - CSA G40.21 GR. 300W "J BOLTS"
- TOP OF PILE SHALL BE FORMED WITH A TUBULAR FORM (SONOTUBE) AS FOLLOWS:
 - BORED PILES - MIN. 1000 mm BELOW FINAL GRADE
 - "HYDRO-JET EXCAVATED" PILES - MIN. 1500 mm BELOW FINAL GRADE
- CONCRETE** - CONCRETE MATERIAL SHALL HAVE THE FOLLOWING MINIMUM PROPERTIES IN ACCORDANCE WITH CSA A23.1-04:
 - CLASS OF EXPOSURE: S-1
 - COMPRESSIVE STRENGTH @ 56 DAYS - 35 MPa
 - WATER/CEMENTING MATERIALS RATIO = 0.4
 - AIR CONTENT: CATEGORY 2 PER TABLE 4 OF CSA A23.1-04 (4-7%)
 - CEMENT - TYPE HS OR HSB, HIGH SULPHATE RESISTANT

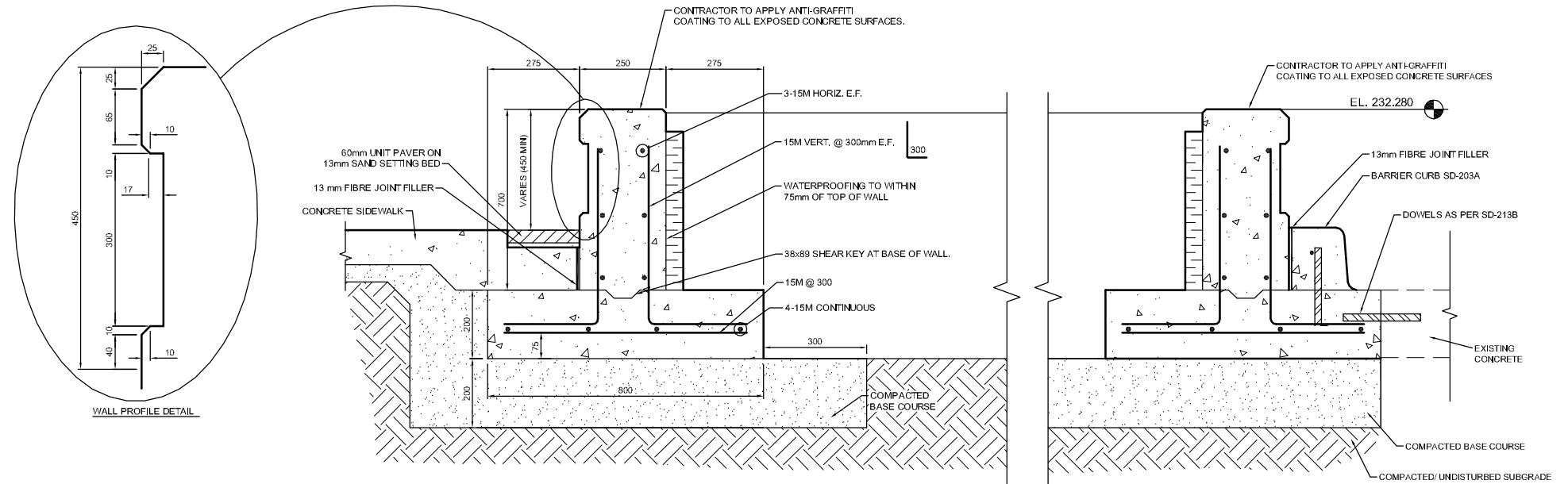


PLAN



SECTION

2 BUS STOP FLAG FOUNDATION
3/5 NTS



B CONCRETE PLANTER WALL
3/5 NTS

150 mm W.M.	WATER MAIN	150 mm W.M.	HYDRO	150 mm W.M.	WATERMAIN	150 mm W.M.
○	HYDRANT VALVE	●	M.T.S. CONCRETE	+	HYDRANT VALVE	+
○	LAND DRAINAGE SEWER	○	ASPHALT	○	LAND DRAINAGE SEWER	○
○	WASTE WATER SEWER	○	PLANING	○	WASTE WATER SEWER	○
○	MANHOLE	○	SIDEWALK	○	Q PROFILE	○
○	CATCH BASIN	○	PAVING STONES	○	NORTH/WEST GUTTER	○
○	CURB INLET	○	PARTIAL DEPTH REPAIR	○	SOUTH/EAST GUTTER	○
○	JUNCTIONS	○	PROPERTY LINE	○	NORTH/WEST T/LANE	○
○	CULVERT	○	SURVEY BAR	○	SOUTH/EAST T/LANE	○
○	GAS	○	PARAPLEGIC RAMP	○		○
○	EXISTING	○	LEGEND-PLAN	○	LEGEND-PROFILE	○
○	PROPOSED	○	EXISTING	○	PROPOSED	○

UNDERGROUND STRUCTURES	DATE
SUPV. U/G STRUCTURES COMMITTEE	
NOTE:	
LOCATION OF UNDERGROUND STRUCTURES AS SHOWN ARE BASED ON THE BEST INFORMATION AVAILABLE BUT NO GUARANTEE IS GIVEN THAT ALL EXISTING UTILITIES ARE SHOWN OR THAT THE GIVEN LOCATIONS ARE EXACT. CONFIRMATION OF EXISTENCE AND EXACT LOCATION OF ALL SERVICES MUST BE OBTAINED FROM THE INDIVIDUAL UTILITIES BEFORE PROCEEDING WITH CONSTRUCTION.	

B.M. ELEV.	CPT2 (N: 5528182.293 E: 632680.972)	DESIGNED BY	MRD/SSR
		DRAWN BY	TJH
		CHECKED BY	DBW
		APPROVED BY	
		HOR. SCALE	AS NOTED
		VERTICAL	AS NOTED
		RELEASED FOR CONSTRUCTION	
		DATE	
		NO. REVISIONS	
		DATE	
		BY	
		DATE	

DESIGNED BY MRD/SSR
DRAWN BY TJH
CHECKED BY DBW
APPROVED BY
HOR. SCALE AS NOTED
VERTICAL AS NOTED
RELEASED FOR CONSTRUCTION
DATE

ENGINEER'S SEAL
PROVINCE OF MANITOBA
REGISTERED PROFESSIONAL ENGINEER
S.S. RIHAL
07-31-09
CONSULTANT PROJECT NO.
091918

THE CITY OF WINNIPEG
TRANSIT DEPARTMENT
Winnipeg
BALMORAL TRANSIT TERMINAL
CITY DRAWING NUMBER P-3313-05
SHEET 05 OF 10
BD OPPORTUNITY NUMBER 540-2009
SECTIONS AND DETAILS - 2